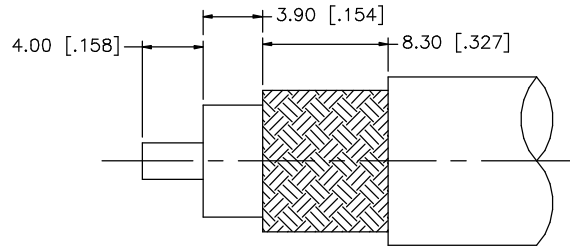
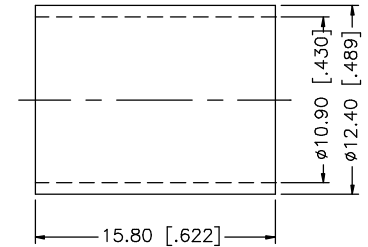
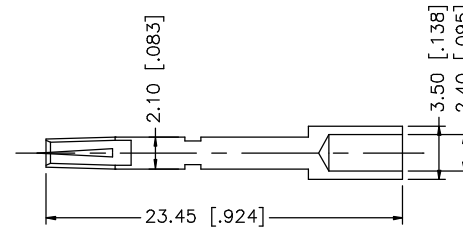
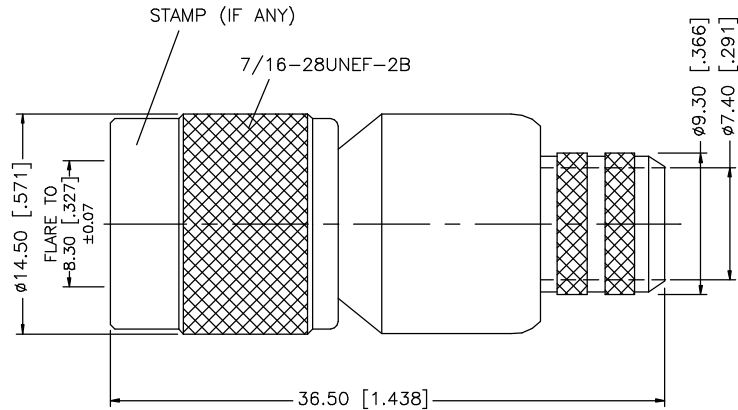


REV.	DATE	DESCRIPTION
A	08/28/98	REDIMENSION/ MODIFY CONTACT DIMENSIONS
B	06/05/03	UPDATE DRAWING FORMAT



RECOMMENDED CABLE STRIPPING DIMENSIONS



NOTE:

1. CRIMPED FERRULE  
HEX CRIMP SIZE .429"
2. CRIMPED CONTACT PIN  
HEX CRIMP SIZE .118"

9					<p>UNLESS OTHERWISE SPECIFIED DIMENSIONS ARE IN MILLIMETERS. DIMENSIONS IN [ ] ARE IN INCHES AND FOR CUSTOMER REFERENCE ONLY.</p> <p>UNLESS OTHERWISE SPECIFIED TOLERANCES FOR MILLIMETERS ARE:  0.5 - 8mm ± 0.20mm  8 - 30mm ± 0.40mm  30 - 120mm ± 0.50mm</p> <p>UNLESS OTHERWISE SPECIFIED TOLERANCES FOR INCHES ARE:  .020 - .315 = ± 0.007"  .315 - 1.180 = ± 0.015"  1.180 - 4.724 = ± 0.020"</p> <p>DO NOT SCALE DRAWING</p>	APPROVALS	DATE	<h1 style="color: blue;">Amphenol Connex</h1>						
8						DRAWN	G.R.S.					06/05/03		
7						CHECKED								
6						ISSUED			PART DESCRIPTION					
5						SHEET	1 OF 1		TNC REVERSE POLARITY CRIMP PLUG (FOR RG 8, 213/U CABLE)					
4	FERRULE	COPPER	NICKEL	1					PART NO.					
3	CONTACT PIN	PHOS. BRONZE	GOLD	1					122394RP					
2	INSULATOR	TEFLON	NATURAL	1					DWG. NO.					
1	BODY	BRASS	NICKEL	1					122394RP.DWG	REV.	B	SIZE	A	SCALE