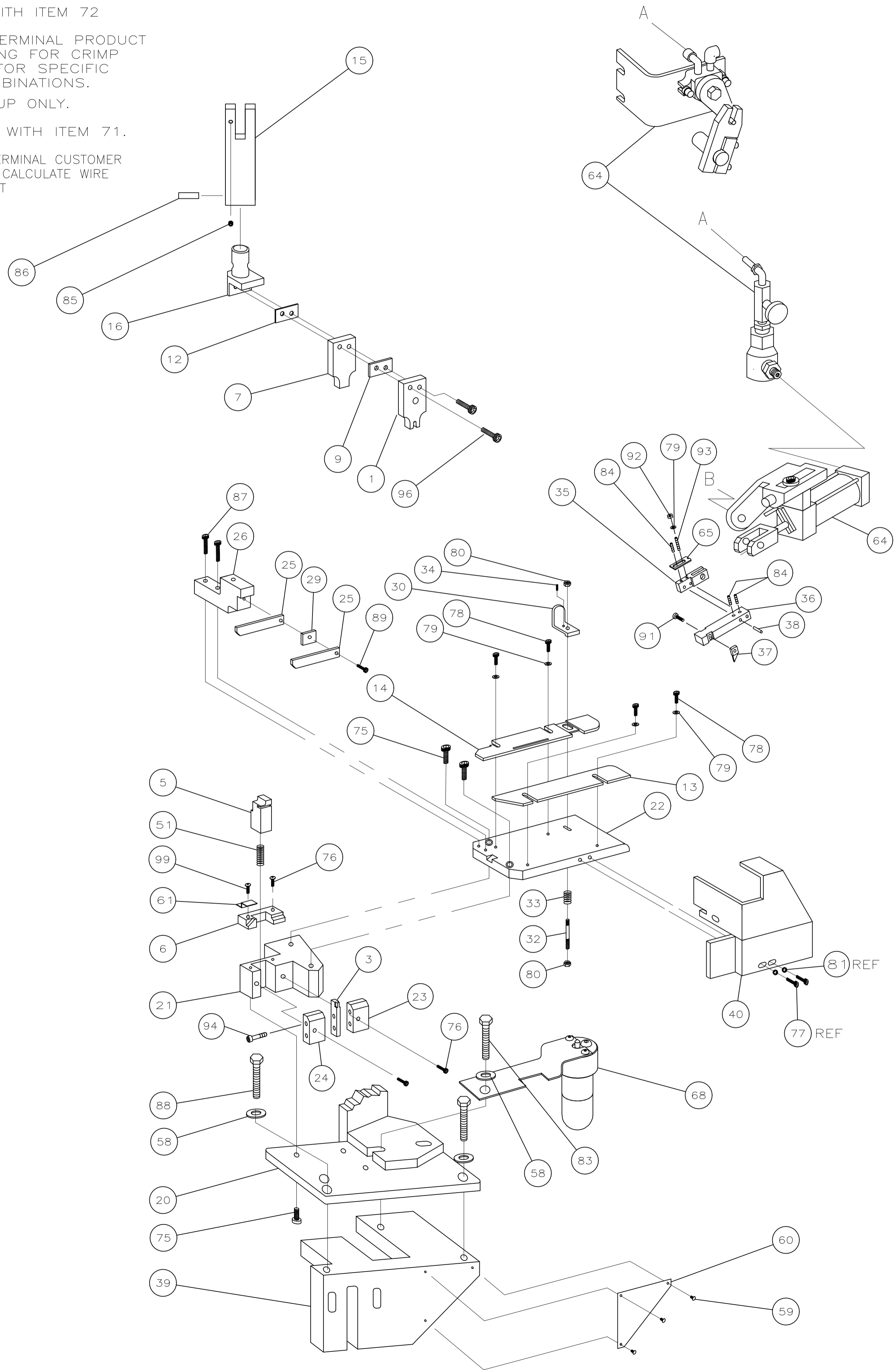


© 2021 TE Connectivity. All Rights Reserved.		
PART NUMBER	REV	FIRST USED
566269-1	N	1-471273-2

- 1 RECOMMENDED SPARE PARTS.
- 2 ITEMS NOT SHOWN.
- 3 SUPPLY WITH ITEM 72
- 4. CONTACT TERMINAL PRODUCT ENGINEERING FOR CRIMP HEIGHTS FOR SPECIFIC WIRE COMBINATIONS.
- 5 FOR SET-UP ONLY.
- 6 SUPPLIED WITH ITEM 71.
- 7 REFER TO TERMINAL CUSTOMER DRAWING TO CALCULATE WIRE CRIMP HEIGHT



TERMINAL NAME: SPLICE	62754	CRIMPING DATA			
CRIMP HEIGHT		WIRE SIZE			
.141±.002		(1)12+(1)10			
-		-			
-		-			
-		-			
CRIMP	SIZE	TYPE	RANGE		
WIRE	.300	F	14,000-22,900 CMA		
INSUL	-	-	-		
FEED	APPL INST	SET UP GAGE	LAYOUT		
.908	408-8012	-	-		
TERM APPL SPEC 114-2088		WIRE STRIP LENGTH .360-.400			

REVISIONS					
P	LTR	DESCRIPTION	DATE	DN	APVD
N1		REVISED PER ECR-21-006174	09JUN2021	GK	RK

-	-	-	-	-	73
1	-	B	465319-2	EXTENSION BASE 30"	72
1	-	A	453602-1	MOUNT BRACKET ASSY 30"	71
-	-	-	-	-	70
-	-	-	-	-	69
1	-	C	465184-8	LUBRICATOR ASSY	68
-	-	-	-	-	67
-	-	-	-	-	66
1	-	A	374999	TENSION ADJ PLATE	65
1	-	D	1-690021-3	AIR FEED ASSY	64
-	-	-	-	-	63
-	-	-	-	-	62
1	-	-	455443-2	DEFLECTOR, CHIP	61
1	-	B	452373-1	PLATE, IDENTIFICATION	60
3	-	A	21017-6	SCR, RH DRIVE	59
3	-	A	371178	WASHER	58
-	-	-	-	-	57
-	-	-	-	-	56
-	-	-	-	-	55
-	-	-	-	-	54
-	-	-	-	-	53
-	-	-	-	-	52
1	-	B	387083	SPRING,SHEAR	51
-	-	-	-	-	50
-	-	-	-	-	49
-	-	-	-	-	48
-	-	-	-	-	47
-	-	-	-	-	46
-	-	-	-	-	45
-	-	-	-	-	44
-	-	-	-	-	43
-	-	-	-	-	42
-	-	-	-	-	41
1	-	D	1-461028-9	GUARD	40
1	-	C	570238	BASE CASTING	39
2	-	B	1-21030-5	FEED FINGER DOWEL PIN	38
1	-	A	811645-1	TIP,FEED FINGER	37
1	-	-	811644-1	FEED FINGER	36
1	-	A	810131	HOLDER,FEED FINGER	35
1	-	A	2-21006-9	SCR, STOCK DRAG, 6-32 X .25	34
1	-	A	373469	SPRING,STOCK DRAG	33
1	-	A	370573	STUD,STOCK DRAG	32
1	-	A	21018-5	NUT,HEX 6-32	31
1	-	B	387650-4	STOCK DRAG	30
1	-	A	692968-6	STRIPPER SPACER	29
-	-	-	-	-	28
-	-	-	-	-	27
1	-	A	692875-4	MOUNT,STRIPPER	26
2	-	A	811266-5	STRIPPER	25
1	-	A	811839-6	AUX ANVIL HOLDER	24
1	-	A	811838-7	ANVIL HOLDER	23
1	-	B	692187-1	PLATE,STRIP GUIDE	22
1	-	C	565076-1	BLOCK,BASE	21
1	-	B	465317-1	PLATE,BASE	20
-	-	-	-	-	19
-	-	-	-	-	18
-	-	-	-	-	17
1	-	C	465325-1	HOLDER,TOOL	16
1	-	B	471167	RAM	15
1	-	B	812767-1	STRIP GUIDE,REAR	14
1	-	B	465320-5	STRIP GUIDE,FRONT	13
1	-	-	854652-8	CRIMP SPACER	12
-	-	-	-	-	11
-	-	-	-	-	10
1	-	C	370570	SPACER	9
-	-	-	-	-	8
1	-	A	456172-4	SHEAR DEP	7
1	-	A	811239-1	PLATE,SHEAR	6
1	-	B	465324-4	SHEAR,FLOATING	5
-	-	-	-	-	4
1	-	B	1-689722-0	ANVIL	3
-	-	-	-	-	2
1	-	C	453930-4	CRIMPER,WIRE	1
-	-	-	-	-	0

-	-	-	-	-	129	
-	-	-	-	-	128	
-	-	-	-	-	127	
-	-	-	-	-	126	
-	-	-	-	-	125	
-	-	-	-	-	124	
-	-	-	-	-	123	
-	-	-	-	-	121	
-	-	-	-	-	120	
-	-	-	-	-	119	
-	-	-	-	-	118	
-	-	-	-	-	117	
-	-	-	-	-	116	
-	-	-	-	-	115	
-	-	-	-	-	114	
-	-	-	-	-	113	
-	-	-	-	-	112	
-	-	-	-	-	111	
-	-	-	-	-	110	
-	-	-	-	-	109	
-	-	-	-	-	108	
-	-	-	-	-	107	
-	-	-	-	-	106	
-	-	-	-	-	105	
-	-	-	-	-	104	
-	-	-	-	-	103	
-	-	-	-	-	102	
-	-	-	-	-	101	
-	-	-	-	-	100	
-	-	-	-	-	99	
6	2	-	A	3-21001-3	SCR, SHC, 3/8-16 X .75	98
6	2	-	A	3-21001-9	SCR, SHC, 3/8-16 X 2.00	97
3	2	-	A	21001-7	SCR, SHC 1/4-20 X .25	96
2	-	A	1-21001-0	SCR, SHC, 1/4-20 X 200	95	
2	-	A	3-21000-1	SCR, SHC 8-32 X 1.00	94	
1	-	A	4-21006-4	SCR, SET, 8-32 X .50	93	
1	-	A	21018-6	NUT, JAM, 8-32	92	
1	-	A	2-21000-5	SCR, SHC, 8-32 X .25	91	
2	-	A	21001-6	SCR, SHC, 1/4-20 X 1.00	90	
1	-	A	2-21000-9	SCR, SHC 8-32 X .75	89	
2	-	A	3-21015-1	SCR, HEX HD, 3/8-16 X 1.00	88	
2	-	A	3-21000-1	SCR, SHC, 8-32 X 1.00	87	
1	-	A	7-21029-0	PIN, SLT SPR, Ø.312 X 1.62	86	
1	-	A	2-21549-3	SCR, SOC SET, 1/4-20 X .25	85	
3	-	A	3-21006-8	SCR, SOC SET 8-32 X .125	84	
1	-	A	3-21015-3	SCR, HEX HD, 3/8-16 X 1.50	83	
-	-	-	-	-	82	
REF	-	A	21055-6	WASHER, FLAT, #8	81	
1	-	A	21021-4	NUT, HEX, S/L 10-32	80	
5	-	A	21055-6	WASHER, FLAT, #8	79	
4	-	A	2-21000-6	SCR, SHC, 8-32 X .38	78	
REF	-	A	2-21000-6	SCR, SHC, 8-32 X .38	77	
4	-	A	3-21000-5	SCR, SHC, 10-32 X .50	76	
5	-	A	21001-3	SCR, SHC, 1/4-20 X .62	75	
-	-	-	-	-	74	
-	-	-	-	-	73	
-	-	-	-	-	72	
-	-	-	-	-	71	
-	-	-	-	-	70	
-	-	-	-	-	69	
-	-	-	-	-	68	
-	-	-	-	-	67	
-	-	-	-	-	66	
-	-	-	-	-	65	
-	-	-	-	-	64	
-	-	-	-	-	63	
-	-	-	-	-	62	
-	-	-	-	-	61	
-	-	-	-	-	60	
-	-	-	-	-	59	
-	-	-	-	-	58	
-	-	-	-	-	57	
-	-	-	-	-	56	
-	-	-	-	-	55	
-	-	-	-	-	54	
-	-	-	-	-	53	
-	-	-	-	-	52	
-	-	-	-	-	51	
-	-	-	-	-	50	
-	-	-	-	-	49	
-	-	-	-	-	48	
-	-	-	-	-	47	
-	-	-	-	-	46	
-	-	-	-	-	45	
-	-	-	-	-	44	
-	-	-	-	-	43	
-	-	-	-	-	42	
-	-	-	-	-	41	
-	-	-	-	-	40	
-	-	-	-	-	39	
-	-	-	-	-	38	
-	-	-	-	-	37	
-	-	-	-	-	36	
-	-	-	-	-	35	
-	-	-	-	-	34	
-	-	-	-	-	33	
-	-	-	-	-	32	
-	-	-	-	-	31	
-	-	-	-	-	30	
-	-	-	-	-	29	
-	-	-	-	-	28	
-	-	-	-	-	27	
-	-	-	-	-	26	
-	-	-	-	-	25	
-	-	-	-	-	24	
-	-	-	-	-	23	
-	-	-	-	-	22	
-	-	-	-	-	21	
-	-	-	-	-	20	
-	-	-	-	-	19	
-	-	-	-	-	18	
-	-	-	-	-	17	
-	-	-	-	-	16	
-	-	-	-	-	15	
-	-	-	-	-	14	
-	-	-	-	-	13	
-	-	-	-	-	12	
-	-	-	-	-	11	
-	-	-	-	-	10	
-	-	-	-	-	9	
-	-	-	-	-	8	
-	-	-	-	-	7	
-	-	-	-	-	6	
-	-	-	-	-	5	
-	-	-	-	-	4	
-	-	-	-	-	3	
-	-	-	-	-	2	
-	-	-	-	-	1	
-	-	-	-	-	0	

MACHINE REF	STD APPL	THIS DRAWING IS A CONTROLLED DOCUMENT.		DIN 8-30-94	D. SALTZER
DIMENSIONS: INCHES		TOLERANCES UNLESS OTHERWISE SPECIFIED:		8-30-94	C. ERISMAN
0 PLC ± .005		1 PLC ± .002		8-30-94	T. BEDDICK
1 PLC ± .002		2 PLC ± .001		NAME	
2 PLC ± .001		3 PLC ± .0005		STD APPLICATOR (30 DEG ROT SPLICE)	
3 PLC ± .0005		4 PLC ± .0002		APPLICATION SPEC	
4 PLC ± .0002		ANGLES ± .001		SIZE	
MATERIAL		FINISH		WEIGHT	
-		-		A1 00779	
-		-		C=566269-1	
-		-		CUSTOMER DRAWING	
-		-		SCALE 1:4	
-		-		SHEET 1 of 1	
-		-		REV N1	

CUSTOMER AND ASSEMBLY DRAWING