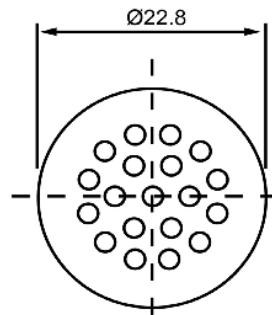
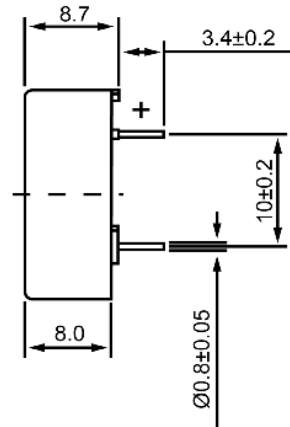


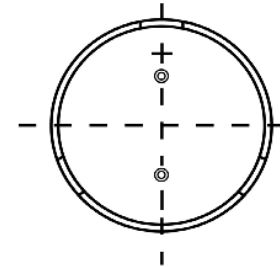
TOP VIEW





SIDE VIEW



BOTTOM VIEW



Specifications			Notes	Revision History							
Description	Value	Unit		Version	Description		Date	Approved			
Shape	Round		1) All dimensions are in mm unless otherwise noted 2) All parts meet RoHS	1	Released from Engineering		2/8/2014	J.S.			
Resonant Frequency	1,500	(Hz)									
Frequency Range	1,500 ~ 4,000	(Hz)									
SPL @ 10cm	75	(dBA)									
Impedance	8	(Ohm)									
Cone Material	Mylar										
Nominal Power	0.3	(W)									
Max Power	0.4	(W)									
Mount Type	Thru Hole										
Operating Temperature	-20 ~ +60	°C									
Storage Temperature	-30 ~ +60	°C									
Weight	3.3	(g)									
 <b>DB UNLIMITED</b>						<b>SM231508-1</b>					

Additional considerations can be found at [www.dbunlimitedco.com/technical-articles](http://www.dbunlimitedco.com/technical-articles).