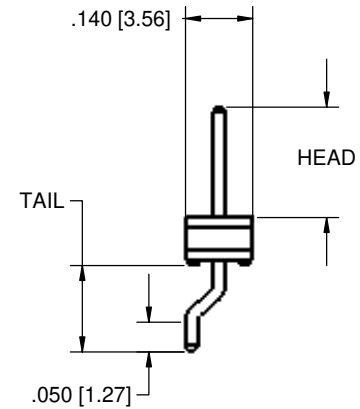
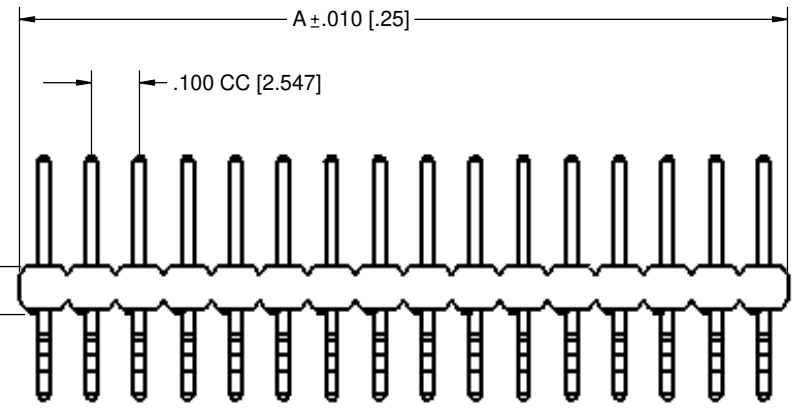


PLATING SPECIFICATIONS		
	CONTACT	TERMINAL
A	.000015" GOLD	.0001" TIN/LEAD
D	.00003" GOLD	.00003" GOLD OVERALL
G	.00001" GOLD	.000005" GOLD
M	.00003" GOLD	.00001" GOLD OVERALL
N	.00005" GOLD	.0001" TIN/LEAD
O	.00003" GOLD	.0001" TIN/LEAD
P	GOLD FLASH	GOLD FLASH
R	.00002" GOLD	.0001" TIN/LEAD
S	.00001" GOLD	.00001" GOLD OVERALL
T	.0001" TIN/LEAD	.0001" TIN/LEAD OVERALL
V	.00003" GOLD	.000005" GOLD
W	GOLD FLASH	.0001" TIN/LEAD
X	.00003" GOLD	.0001" TIN/LEAD
Y	.00003" GOLD	.000005" GOLD
Z	.00001" GOLD	.0001" TIN/LEAD

TERMINATION TYPES		
P/N CODE	HEAD DIMENSIONS	TAIL DIMENSIONS
BS	0.230 [5.84]	.180 [4.57]
GS	0.318 [8.08]	.180 [4.57]

PART NUMBER	BODY NUMBER	A
G_C01S_N-M89	H01R-A360	0.100 [2.54]
G_C02S_N-M89	H02R-A360	0.200 [5.08]
G_C03S_N-M89	H03R-A360	0.300 [7.62]
G_C04S_N-M89	H04R-A360	0.400 [10.16]
G_C05S_N-M89	H05R-A360	0.500 [12.70]
G_C06S_N-M89	H06R-A360	0.600 [15.24]
G_C07S_N-M89	H07R-A360	0.700 [17.78]
G_C08S_N-M89	H08R-A360	0.800 [20.32]
G_C09S_N-M89	H09R-A360	0.900 [22.86]
G_C10S_N-M89	H10R-A360	1.000 [25.40]
G_C11S_N-M89	H11R-A360	1.100 [27.94]
G_C12S_N-M89	H12R-A360	1.200 [30.48]
G_C13S_N-M89	H13R-A360	1.300 [33.02]
G_C14S_N-M89	H14R-A360	1.400 [35.56]
G_C15S_N-M89	H15R-A360	1.500 [38.10]
G_C16S_N-M89	H16R-A360	1.600 [40.64]
G_C17S_N-M89	H17R-A360	1.700 [43.18]
G_C18S_N-M89	H18R-A360	1.800 [45.72]
G_C19S_N-M89	H19R-A360	1.900 [48.26]
G_C20S_N-M89	H20R-A360	2.000 [50.80]
G_C21S_N-M89	H21R-A360	2.100 [53.34]
G_C22S_N-M89	H22R-A360	2.200 [55.88]
G_C23S_N-M89	H23R-A360	2.300 [58.42]
G_C24S_N-M89	H24R-A360	2.400 [60.96]
G_C25S_N-M89	H25R-A360	2.500 [63.50]
G_C26S_N-M89	H26R-A360	2.600 [66.04]
G_C27S_N-M89	H27R-A360	2.700 [68.58]
G_C28S_N-M89	H28R-A360	2.800 [71.12]
G_C29S_N-M89	H29R-A360	2.900 [73.66]
G_C30S_N-M89	H30R-A360	3.000 [76.20]
G_C31S_N-M89	H31R-A360	3.100 [78.74]
G_C32S_N-M89	H32R-A360	3.200 [81.28]
G_C33S_N-M89	H33R-A360	3.300 [83.82]
G_C34S_N-M89	H34R-A360	3.400 [86.36]
G_C35S_N-M89	H35R-A360	3.500 [88.90]
G_C36S_N-M89	H36R-A360	3.600 [91.44]

*ALL CONTACT PINS HAVE A .00005" NICKEL UNDERPLATE.



SAMPLE PART NUMBER: GTC16SBSN-M89

PLATING SPECIFICATION

TERMINATION TYPE

COMPUTER GENERATED DOCUMENT DO NOT CHANGE MANUALLY

PROPRIETARY AND CONFIDENTIAL
THIS DRAWING AND DESIGN IS THE PROPERTY OF SULLINS ELECTRONICS. IT MAY NOT BE USED FOR ANY PURPOSE OTHER THAN BY THE OWNER. SULLINS ELECTRONICS DOES NOT AUTHORIZE THE REPRODUCTION OR CONVEYANCE OF ANY INFORMATION CONTAINED HEREIN.

A	62	ORIGINAL RELEASE	9/24/03	JFW	AJT
REV.	ECO NO.	DESCRIPTION	DATE	BY	APP'VD
		UNLESS OTHERWISE SPECIFIED	DRAWN	DATE	NAME
		DIMENSIONS ARE IN INCHES	9/24/03	JWHITE	
		TOLERANCES	CHECKED	9/24/03	AJT
		FRACTIONAL ± 1/32	COMMENTS		
		ANGULAR ± 1°			
		TWO PLACE DECIMAL ± .02			
		THREE PLACE DECIMAL ± .005			
		FOUR PLACE DECIMAL ± .0005	PART NO. / DESCRIPTION:		
		INTERPRET GEOMETRIC TOLERANCING PER	HEADERS		
		MATERIAL	G_C__S__N-M89		
		NOTED	SIZE	DWG. NO.	REV
		FINISH	C	10060	A
		NEXT ASSY	SCALE: 5:1		
		USED ON	SHEET 1 OF 1		
		APPLICATION	DO NOT SCALE DRAWING		