

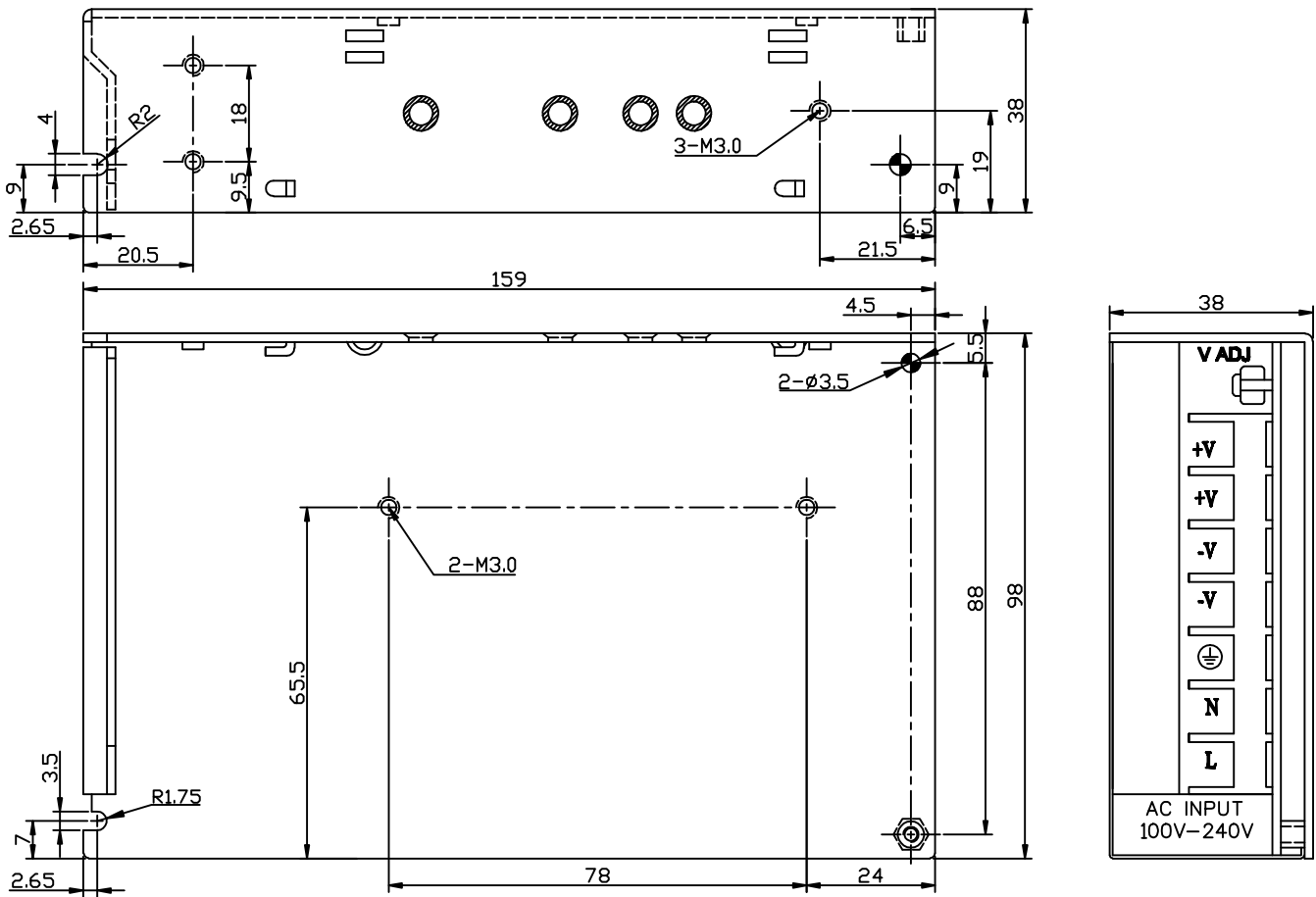
**Features:**

- Universal AC input/ Full range
- Wide Operating Ambient Temperature (-20°C~70°C)
- High Efficiency, and High Reliability
- Output Protections: OLP/OVP/SCP
- All using 105°C long life electrolytic capacitors.
- 100% full load burn-in test



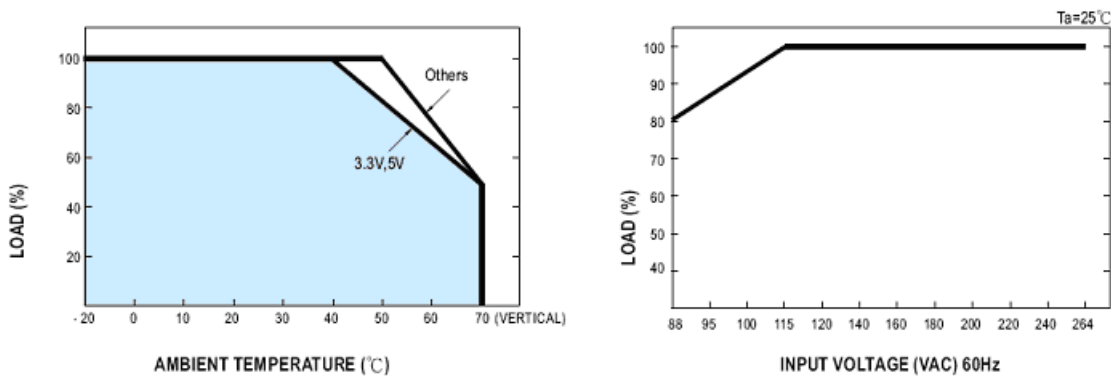
Model	QPD-100-5	QPD-100-12	QPD-100-15	QPD-100-24	QPD-100-48	
<b>Output Characteristics</b>						
DC Output	5V	12V	15V	24V	48V	
Rated Current	16A	8.5A	7A	4.5A	2.3A	
Current Range	0~16A	0~8.5A	0~7A	0~4.5A	0~2.3A	
Ripple and Noise	0~70°C	<80mV	<100mV	<100mV	<120mV	<200mV
	-20~0°C	<100mV	<120mV	<120mV	<120mV	<200mV
Voltage ADJ. Range	4.7V-5.6V	11.0V-13.0V	13.7V-16.3V	22.4V-27.3V	44.4V-52.2V	
Voltage Accuracy	±2.0%	±1.0%	±1.0%	±1.0%	±1.0%	
Line Regulation	±0.5%	±0.5%	±0.5%	±0.5%	±0.5%	
Load Regulation	±1.0%	±1.0%	±1.0%	±1.0%	±1.0%	
Set-up Time	<2.0s (115VAC input, full load); <1.0s (230VAC input, full load)					
Hold-up Time	>10ms (115VAC input, full load); >20ms (230VAC input, full load)					
Temperature Coefficient	±0.03%/°C					
Overshoot and Undershoot	<5.0%					
<b>Input Characteristics</b>						
Voltage Range	90VAC~264VAC, 127VDC~370VDC					
Frequency Range	47Hz-63Hz					
Efficiency (Typical)	115VAC Input	80%	80%	83%	85%	83%
	230VAC Input	80%	81%	84%	85%	84%
AC Current (max)	<2.5A					
Inrush Current (Typical)	20A@115VAC Cold start 40A@230VAC Cold start					
Leakage Current	<0.4mA@115VAC <0.75mA@230VAC					
<b>Protection</b>						
Over Load (OLP)	105%~150% of rated output current, hiccup mode, auto recovery					
Over Voltage (OVP)	110%~150% of rated output voltage, shut down, re-power on to recover					
Short Circuit (SCP)	Long-term mode, auto recovery					
<b>Environmental Characteristics</b>						
Operating Amb. Temp. & Hum	-20°C~70°C; 20%~90% RH Non-Condensing					
Storage Temp. & Hum	-40°C~85°C; 10%-95% RH Non-Condensing					
Safety Standards	UL60950-1; EN60950-1: 2006					
Withstand Voltage	Primary-Secondary: 3.0KVAC;≤10mA. Primary-PG: 1.5KVAC;≤10mA. Secondary-PG: 0.5KVDC;≤10mA					
Isolation Resistance	≥100M ohms					
EMI Conduction & Radiation	Compliance to EN55022(CISPR22) Class B					
Harmonic Current	Compliance to EN61000-3-2, 3					
EMS Immunity	Compliance to EN61000-4-2, 3, 4, 5, 6, 8, 11; ENV50204, light industry level, criteria A					
<b>General Characteristics</b>						
MTBF (MIL-HDBK-217F)	More than 200,000Hrs (25°C, Full load)					
Dimension (LxWxH)	160x98x38mm					
Packing	20PCS/CTN. G.W: 13.6kgs					
Cooling Method	Cooling by free air convection					

## MECHANICAL SPECIFICATIONS



Pin No.	Assignment
1	AC-L
2	AC-N
3	F.G
4.5	DC output -V
6.7	DC output +V

## DERATING CURVE



UNIT: mm