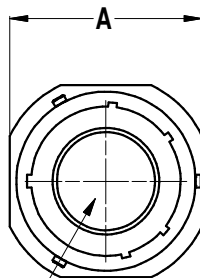
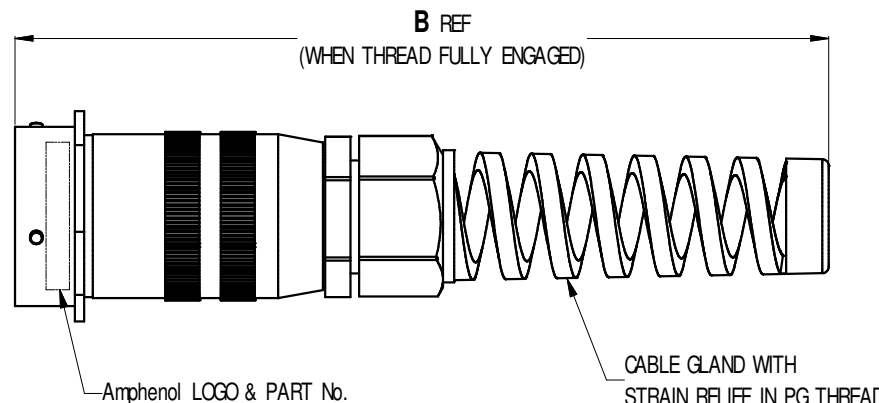


ISOMETRIC VIEW



CONTACTS NOT SHOWN  
FOR No OF CONTACTS REFER TO TABLE



Parts List, Dimensions in mm

ITEM	CATALOGUE P/No	SHELL SIZE	No. OF CONTACT	CABLE GLAND THREAD SIZE	A	LENGTH B
1	MP-6211-39S	20	39	PG16	36.5	181
2	MP-6211-61S	24	61	PG21	43.0	193

CUSTOMER DRAWING

NOTES:

1. MATERIAL AND FINISH: DIE CAST ALUMINUM ALLOY, BLACK FINISH.
2. SUPPLIED WITH GOLD PLATED SOLDER SOCKET CONTACTS.

3	CHANGE FINISH TO BLACK COATING	T.N	17/ 02/ 06	8478
2	ADD CONTACT ID ON BOTH SIDE OF INSERT CHANGE TO PG21 FOR SHELL SIZE 24	T.N	09/ 09/ 05	8422
1	CHANGE FINISH FROM PLATING TO COATING	L.V	16/ 04/ 2004	8277
0	FIRST ISSUE	T.N	6/ 02/ 2004	---
REV.	CHANGE DETAILS	BY	DATE	CHG No

UNLESS OTHERWISE SPECIFIED TOLERANCE TO BE		THIS DOCUMENT IS THE PROPERTY OF AMPHENOL AUSTRALIA PTY. LTD.. NO PART THEREOF MAY BE REPRODUCED AND USED WITHOUT THE PRIOR WRITTEN CONSENT OF THE OWNER			
LINEAR		ANGULAR		CAD FILE: 55010268000213	DRN: T.N
X ± N/A	X' ± 1	X' ± 1	X' ± 1	DATE: 6/ 02/ 2004	TITLE: CABLE CONNECTING
XX ± N/A	XX' ± 30'	XX' ± 30'	XX' ± 15'	DATE: 20/ 02/ 06	RECEPTACLE WITH
XXX ± N/A	XXX' ± 15'	XXX' ± 15'		DATE: 20/ 02/ 06	SOCKET CONTACTS
BREAK ALL SHARP EDGES AND REMOVE ALL BURRS		MATL: SEE NOTE 1	CKD: P.M	DATE: 20/ 02/ 06	Amphenol Australia Pty.Ltd, 2 Fireways Blvd, Keysborough, Vic3173
DO NOT SCALE		FINISH: SEE NOTE 1	APP'D: P.M	DATE: 20/ 02/ 06	DRAWING NO.
DIMENSIONS IN MILLIMETRES		SCALE: NTS	PART No: SEE TABLE	SIZE: A4	SHEET
				55010268- 000- 2	2/ 2