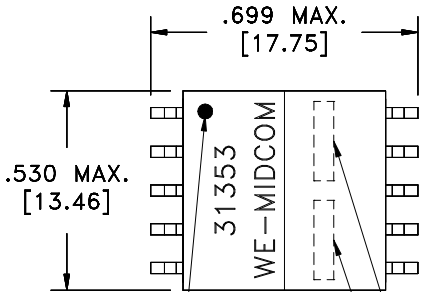
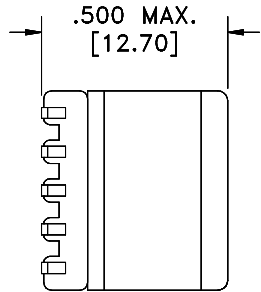
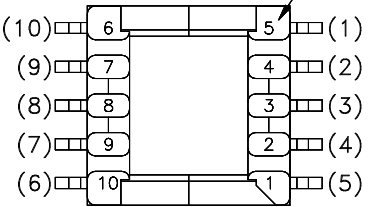
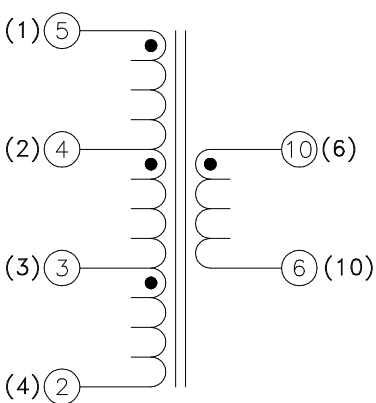


| SOLDER SUFFIX | CUSTOMER TERMINAL | RoHS | LEAD(Pb)-FREE |
|---------------|-------------------|------|---------------|
| | Sn63%, Pb37% | No | No |
| LF1 | Sn96%, Ag4% | Yes | Yes |

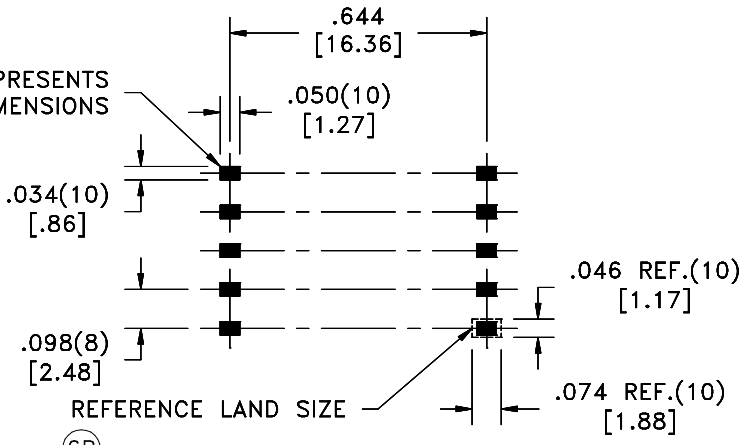
TERM. NO.'s FOR REF. ONLY
CUSTOMER TERM. NO.'s IN ()



DOT LOCATES TERM. #5
CUSTOMER TERM. (1)
LOT CODE & DATE CODE
SOLDER SUFFIX



AREA REPRESENTS
TERMINAL PAD DIMENSIONS



(6B) CUSTOMER TO DETERMINE LAND LAYOUT


ELECTRICAL SPECIFICATIONS @ 25°C unless otherwise noted:

- D.C. RESISTANCE (@20°C): 5-2, 0.12 ohms max.
10-6, 0.72 ohms max.
- DIELECTRIC RATING: 500VAC, 1 minute tested by applying 625VAC for 1 second between 5-10.
- INDUCTANCE: 11.30uH ±10%, 100kHz, 100mVAC, 5-4, Ls.
- URNS RATIO: (10-6):(5-4) = 5:1, ±1%.
(10-6):(4-3) = 5:1, ±1%.
(10-6):(3-2) = 5:1, ±1%.

(6K) OPERATING TEMPERATURE RANGE: -40°C to +125°C including temp rise.

Midcom p/n 31353R-LF1 is eiSos p/n 750031353.

(6E) Designed to meet the specifications of Silicon Laboratories p/n: Si3210 Rev. B.
DETAILS SUBJECT TO CHANGE

| | | | |
|---|---|---|---|
| Unless otherwise specified: Tolerances: Angles: ±1° Fractions: ±1/64 Decimals: ±.005[.13] | DRAWING TITLE <h2 style="text-align: center;">TRANSFORMER</h2> |  www.midcom-inc.com | PART NO. (6E) REV. <h2 style="text-align: center;">31353R/-LF1</h2> <div style="text-align: right;">6K 1/09</div> |
| | This drawing is dual dimensioned. Dimensions in brackets are in millimeters. | | |

PART # 31353R/-LF1