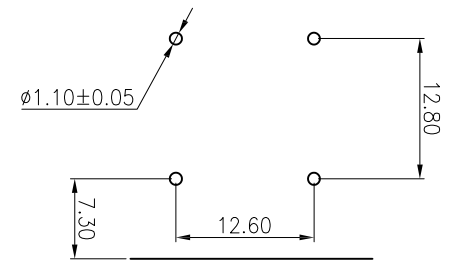
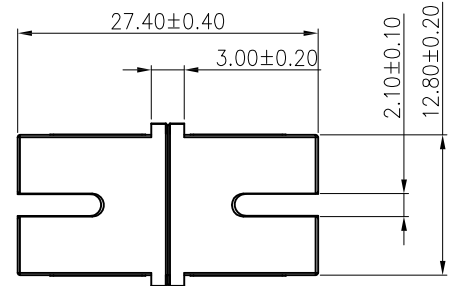
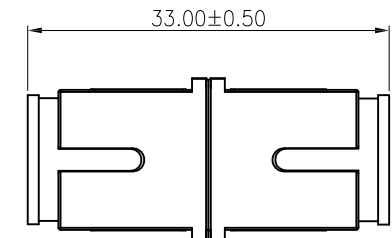
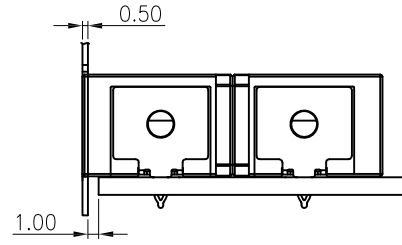
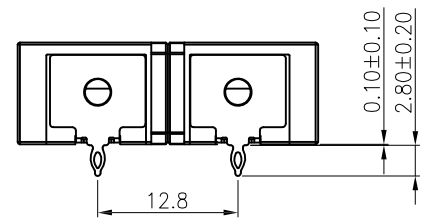
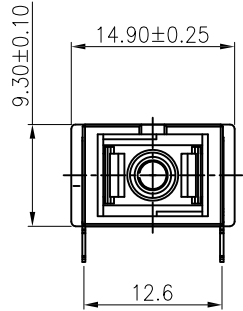


Rev	AWO #	Description	Date	Appr
-		RELEASED	9/8/20	

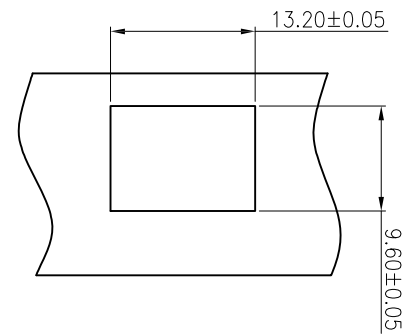
APPROVED: \_\_\_\_\_  
 DATE: \_\_\_\_\_ TITLE: \_\_\_\_\_



RECOMMENDED PCB LAYOUT



WITH DUST CAP



OPSA1BNPC1N1	SC/APC, TWO TYPE DUST CAP	7737C Green	PBT Black
OPSB1BNPC1N1	SC/PC, TWO TYPE DUST CAP	2184C Blue	PBT Black
PART NUMBER	DESCRIPTION	Housing&Insert color	Cap Color

**SPECIFICATIONS:**

Material:  
 Housing: PBT, rated UL 94V-0, Color: See Chart  
 Cap: PBT, rated UL 94V-0, Color: Black  
 Sleeve: Zirconia Ceramic  
 Electrical:  
 Standards of IEC, EIA/TIA, Telcordia  
 Insertion loss: 0.2dB max  
 Interchangeability: 0.2dB max  
 Mechanism durability (500 cycles min): 0.2dB max  
 Temperature Rating:  
 Operating temperature: -40°C to +75°C  
 Environmental:  
 Lead free, RoHS compliant.



UNLESS OTHERWISE SPECIFIED ALL DIMENSIONS ARE MILLIMETERS TOLERANCES: EXCEPT AS NOTED			
MM	ANGLE		
X. ± 0.35	X. ± 2°		
.X ± 0.30	.X ± 1°		
.XX ± 0.25	.XX ± 0.5°		
.XXX ± 0.15	.XXX ± 0.5°		
APPROVALS		DATE	
DRAWN	LH	9/7/20	
CHECKED	JL	9/7/20	
APPROVED			

**ADAM TECH INTERCONNECTS** 909 Rahway Avenue, Union, NJ 07083  
 Phone: 908-687-5000 Fax: 908-687-5710

TITLE: SC TYPE ADAPTER, APC&PC, 1 PORTS, SHORT-EARS, WITH SC TWO TYPE DUST CAP, WITH PRESS FIT PIN

SIZE	PART NO.	REV.
X	OPSX1BNPC1N1	-

REF: S00005C SCALE: NTS SHEET 1 OF 1

D

D

C

C

B

B

A

A