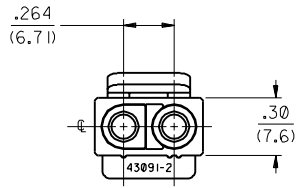
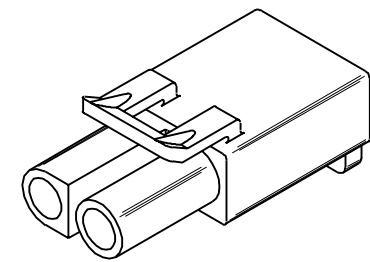
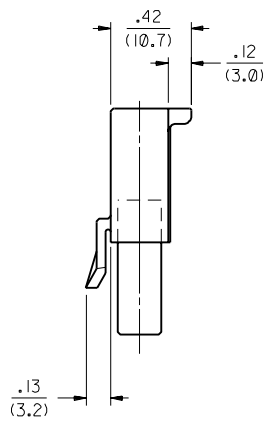
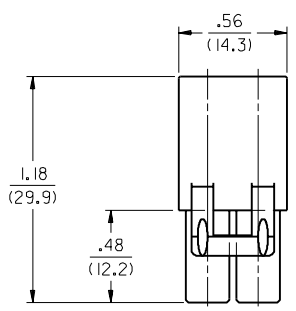
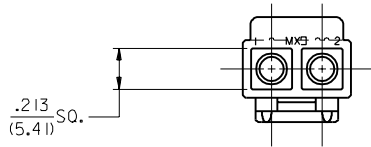


ITEM NO.	COLOR	
X 43091-0201	NATURAL	
X 43091-0202	BLUE	<b>OBSOLETE</b>
X 43091-0203	RED	<b>OBSOLETE</b>

**LEGEND**

43091-02\*\*  
CIRCUIT SIZE

UNINTELLIGENT SEQUENCE NO.



**NOTES:**

1. THESE HOUSINGS MATE WITH 3191 PLUGS AND ARE FOR USE WITH MOLEX .093/(2.36) DIAMETER SERIES TERMINALS.
2. MATERIAL: NYLON 66, U.L. RATED 94V-2.

REV.	DESCRIPTION
B	OBSOLETE P/N UCR2002-0210 COMERC 01/10/11
A	X-REMOVE ECR U3 1804 GXC 12/15/93 RW
4	REVISE PER ECR U3 1417 GXC 10/13/93 RW
3	ADD CKT. I.D. #'S PER ECR U3 1335 GXC 9/7/93 RW
2	X-RELEASE ECR U3 1147 GXC 7/29/93

DIMENSIONS SHOWN (METRIC) INCH		▽ = 0		▼ = 0		REVISE ONLY ON CAD SYSTEM	
UNLESS OTHERWISE SPECIFIED TOLERANCES ANGULAR ± .02°   0							
INCH		METRIC					
3 PLACE	± .010	---					
2 PLACE	± .014	± 0.25					
1 PLACE	---	± 0.36					
DRAFT WHERE APPLICABLE MUST REMAIN WITHIN DIMENSIONS							
DRWG. BY: GXC	CHK'D. BY: RW	FILE NAME: S430912A	DRWG. NO.: SD-43091-****	SHEET NO. 1 of 1		DATE 7/29/93	
APP'D. BY: RAS	SCALE: 2 : 1	MOLEX INCORPORATED U.S.A.		THIS DRAWING CONTAINS INFORMATION THAT IS PROPRIETARY TO MOLEX INC. AND SHOULD NOT BE USED WITHOUT WRITTEN PERMISSION.			

43091

CP C