

# ENVELOPE / ASSEMBLY DRAWING

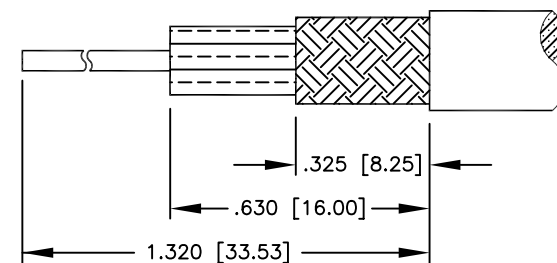
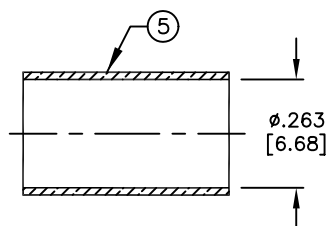
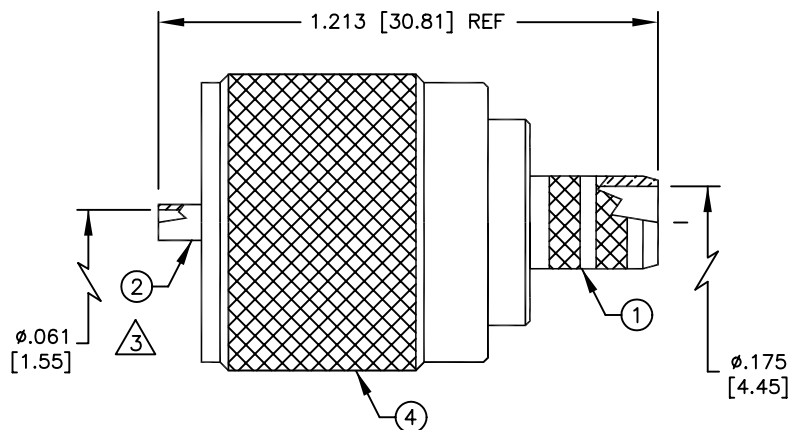
000000

## SPECIFICATION CONTROL DRAWING

THIS DRAWING CONTAINS INFORMATION PROPRIETARY TO RF INDUSTRIES, LTD. ANY UNAUTHORIZED USE OF THIS DRAWING IS EXPRESSLY PROHIBITED. ANY VIOLATION IS PUNISHABLE UNDER U.S. COPYRIGHT LAWS.

REV	DESCRIPTION	DWN	DATE	APPROVED
C	MEASUREMENT CHANGE / REPLACES DWG #7346	KMM	10/8/92	C. JONES
D	CHG FERRULE-FERRULE STUD / RPLS DWG #7762	PB	1/11/93	R. RICE
E	UPDATE AND STANDARDIZE DRAWING	CZS	3/5/98	R. RICE
F	CHANGE TO KNURLED FERRULE STUD & FERRULE ID	CZS	3/9/00	J. D. McR.

ALL DIMENSIONS ARE REFERENCE ONLY



SUGGESTED STRIPPING INSTRUCTIONS  
CRIMP FERRULE WITH .255 CRIMP DIE

CRIMP CONTACT WITH .068 CRIMP DIE OR SOLDER OR BOTH

### SPECIFICATIONS:

IMPEDANCE: NON CONSTANT  
WORKING VOLTAGE: 500 VRMS @ SEA LEVEL  
FREQUENCY RANGE: 0-3 GHz  
FOR ANTENNA SPECIALIST K214 & PRO-FLEX 800, TIMES AA3096 CABLE

DIMENSIONS ARE IN INCHES AND [MILLIMETERS]

UNLESS OTHERWISE NOTED TOLERANCES ARE:  
DECIMALS DIAMETER

**RF connectors**  
DIVISION OF RF INDUSTRIES, LTD.

7610 MIRAMAR RD  
SAN DIEGO, CA 92126  
(858) 549-6340  
(858) 549-6345 FAX

## RFU-508-P

UHF MALE CRIMP PLUG

ITEM	DESCRIPTION	QTY	MATERIAL	FINISH
5	FERRULE [FER-104]	1	BRASS	NICKEL
4	SHELL	1	BRASS	NICKEL
3	DIELECTRIC	1	DAP	PANTONE 129
2	CONTACT	1	BRASS	SILVER
1	BODY	1	BRASS	NICKEL

DRAWN C. ZUNIGA	3/9/00
CHECKED	
ORJ DRAWN D. BRUMELY	4/15/91
APPROVALS	DATE

SIZE A	CABLE GROUP P	DWG NO. 7905	REV F
SCALE: 2:1	CAD FILE	SHEET 1 OF 1	