



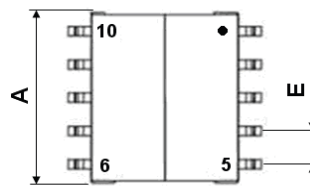
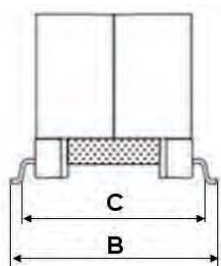
- EP13 Package in SMD
- Operating temperature range: -40°C to +85°C
- Reflow Condition:
Maximum reflow temperature is 250°C/-5°C
time is 20~40 sec. (Refer to IPC/JEDECJ-STD-020 standard)

Electrical Specifications @25°C				
Inductance Lp @250KHz,0.1V (3 - 4)	Inductance Lp @250KHz,0.1V, Idc=1A (3 - 4)	Leakage Inductance Ls @250KHz, 0.1V (3 - 4) (tie 1+2, 7+8+9+10)	Turns Ratio @10KHz, 0.1V (3 - 4) : (2 - 1)	Turns Ratio @10KHz, 0.1V (3 - 4) : (8,7 - 10,9)
127uH (±10%)	114.3uH (±10%)	0.6uH Max	1 : 0.5 (2%)	1 : 0.667 (2%)

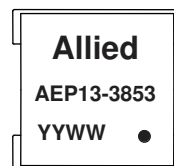
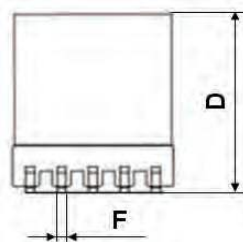
Electrical Specifications @25°C				
DCR (3 - 4)	DCR (2 - 1)	DCR (7 - 9)	DCR (8 - 10)	Hi-Pot @ 1 sec, 3mA 1,3 to 7,8
255mΩ Max	315mΩ Max	67mΩ Max.	67mΩ Max.	1500 Vac

All specifications subject to change without notice.

MECHANICAL



A	13.46 Max
B	17.65 Max
C	15.40 Ref
D	12.32 Max
E	2.50 ± 0.15
F	0.70 ± 0.1
Unit : mm	



SCHEMATICS

