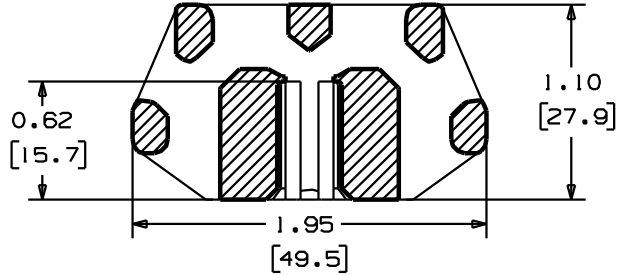
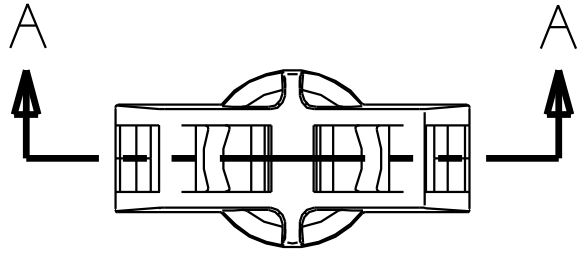
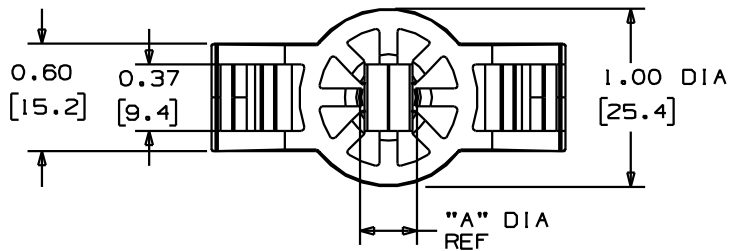


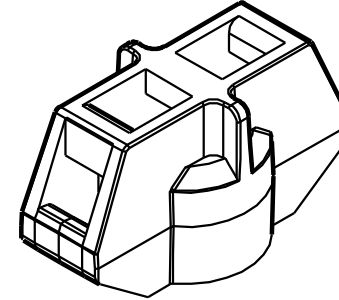
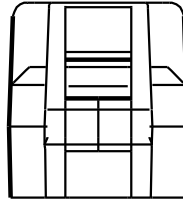
THIS COPY IS PROVIDED ON A RESTRICTED BASIS AND IS NOT TO BE USED IN ANY WAY DETRIMENTAL TO THE INTERESTS OF PANDUIT CORP.



SECTION A - A



| PANDUIT PART NUMBER* | RECOMMENDED MOUNT STUD | MINIMUM INSTALLED STUD PROTRUSION | DIMENSION "A" REF | WEIGHT lbs/100 pcs (g)/100 pcs | FOR USE WITH THE FOLLOWING PANDUIT CABLE TIES                 |
|----------------------|------------------------|-----------------------------------|-------------------|--------------------------------|---|
| TMSTHS10             | 3/8" DIA M10           | 0.050 (12.7)                      | 0.344 (8.7)       | 2.67 (1210)                    | MINIATURE<br>INTERMEDIATE<br>STANDARD<br>LIGHT HEAVY<br>HEAVY |
| TMSTHS11             | 7/16" DIA              |                                   | .387 (9.8)        | 2.64 (1200)                    |   |
| TMSTHS12             | M12                    |                                   | 0.433 (11.0)      | 2.60 (1180)                    |   |
| TMSTHS13             | 1/2" DIA               |                                   | 0.476 (12.1)      | 2.54 (1150)                    |   |
| TMSTHS16             | 5/8" DIA M16           |                                   | 0.610 (15.5)      | 2.39 (1090)                    |   |
| TMSTHS19             | 3/4" DIA               |                                   | 0.727 (18.5)      | 2.31 (1050)                    |   |



\*NOTES:

- SEE [www.panduit.com](http://www.panduit.com) FOR PART NUMBER SUFFIX DESIGNATION CONCERNING PACKAGE SIZE, PART MATERIAL AND PART COLOR.

DIMENSIONS IN BRACKETS ARE METRIC [mm]

|   |  |                                    |  |
|---|--|------------------------------------|--|
| TITLE<br><b>TMSTHS TIE MOUNT FOR THREADED STUD</b>                    |  | CUSTOMER DRAWING                   |  |
| ITEM REVISION NAME<br><b>G03597CS/03</b>                              |  | <b>PANDUIT</b>                     |  |
| DATASET FILE NAME<br><b>G03597CS_DC_GB0239CY/10</b>                   |  |                                    |  |
| UNLESS OTHERWISE SPECIFIED, DIMENSIONAL TOLERANCES ARE: IN [mm]       |  | MATERIAL:<br><b>NYLON 6/6</b>      |  |
| .x : 0.05 [1.3] .xxx : 0.010 [0.25]                                   |  | DRAWING NUMBER:<br><b>GB0239CY</b> |  |
| .xx : 0.02 [0.5] ANGLES : 5°  |  | THIRD ANGLE PROJECTION             |  |
| DRAWN BY<br><b>MLT</b>  |  | SCALE<br><b>1:1</b>                |  |
| DATE<br><b>1/12/96</b>  |  | SHT 1 OF 1                         |  |
| DESCRIPTION<br><b>REVISED OAL DIMENSION SEE ECN FOR FULL DETAILS.</b> |  | SIZE<br><b>A</b>                   |  |
| ECN<br><b>GB0239CY/10</b>   |  |                                    |  |

| REV | DATE     | BY  | CHK | APR | DESCRIPTION                                     | ECN         |
|-----|----------|-----|-----|-----|---|-------------|
| 10  | 10/29/13 | BWG | MPH | RTF | REVISED OAL DIMENSION SEE ECN FOR FULL DETAILS. | GB0239CY/10 |

D101000A/16