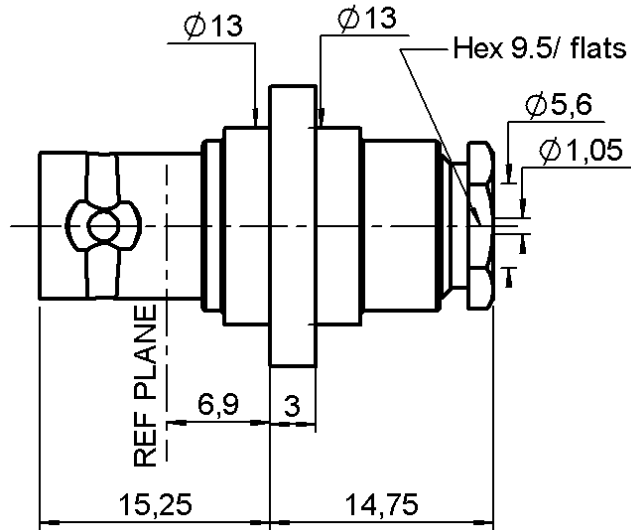
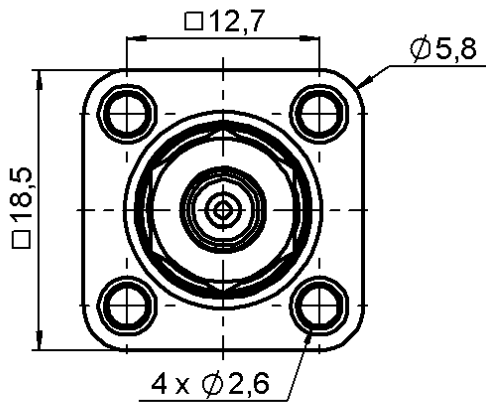


STRAIGHT INSULATED SQUARE FLANGE JACK

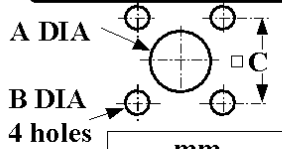
R141.256.000

CLAMP TYPE - CABLE 5/50 S

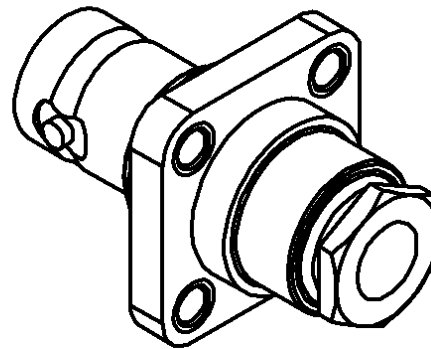
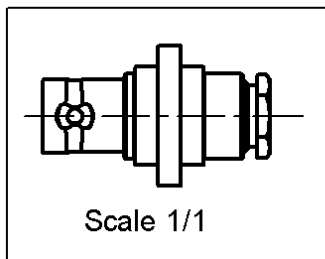
Series : BNC



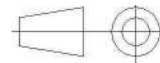
PANEL CUT OUT



	mm	
	Maxi	mini
A	13.3	13.2
B	2.7	2.6
C	12.75	12.7



All dimensions are in mm.



COMPONENTS	MATERIALS	PLATING (µm)
BODY	BRASS	NICKEL 2
CENTER CONTACT	BERYLLIUM COPPER	GOLD 0.5 OVER NICKEL 2
OUTER CONTACT	-	-
INSULATOR	PTFE	-
GASKET	SILICONE RUBBER	-
OTHERS PARTS	-	-
.	-	-
.	-	-

Issue : 0939 R

In the effort to improve our products, we reserve the right to make changes judged to be necessary.



STRAIGHT INSULATED SQUARE FLANGE JACK

R141.256.000

CLAMP TYPE - CABLE 5/50 S

Series : **BNC**

PACKAGING

Standard	Unit	Other
100	'W' option	Contact us

SPECIFICATION

ELECTRICAL CHARACTERISTICS

Impedance		50 Ω
Frequency		0-4 GHz
VSWR	1.2 +	0,0000 x F(GHz) Maxi
Insertion loss		0.115 √F(GHz) dB Maxi
RF leakage	- (57 - F(GHz)) dB Maxi
Voltage rating		500 Veff Maxi
Dielectric withstanding voltage		1500 Veff mini
Insulation resistance		5000 MΩ mini

CABLE ASSEMBLY

Stripping	a	b	c	d	e	f
mm	2,50	7,00	0,00	0,00	3,00	0,00

Assembly instruction :

CLAMP 03

Recommended cable(s)

RG 141

RG 58

KX 15

Characteristics indicated on this data sheet are those that can be achieved with the highest performance cable. Intrinsic limitations of the cable may diminish the performance of the assembly

Cable retention

- pull off

180 N mini

- torque

NA N.cm

MECHANICAL CHARACTERISTICS

Center contact retention

Axial force – Mating end

NA N mini

Axial force – Opposite end

NA N mini

Torque

NA N.cm mini

Recommended torque

Mating

NA N.cm

Panel nut

NA N.cm

Clamp nut

150 N.cm

A/F clamp nut

9,5000 mm

Mating life

500 Cycles mini

Weight

16,0000 g

TOOLING

Part Number	Description	Hexagon
.	.	.

OTHER CHARACTERISTICS

-

ENVIRONMENTAL

Operating temperature

-65/+165 °C

Hermetic seal

NA Atm.cm3/s

Panel leakage

NA

Issue : **0939 R**

In the effort to improve our products, we reserve the right to make changes judged to be necessary.

