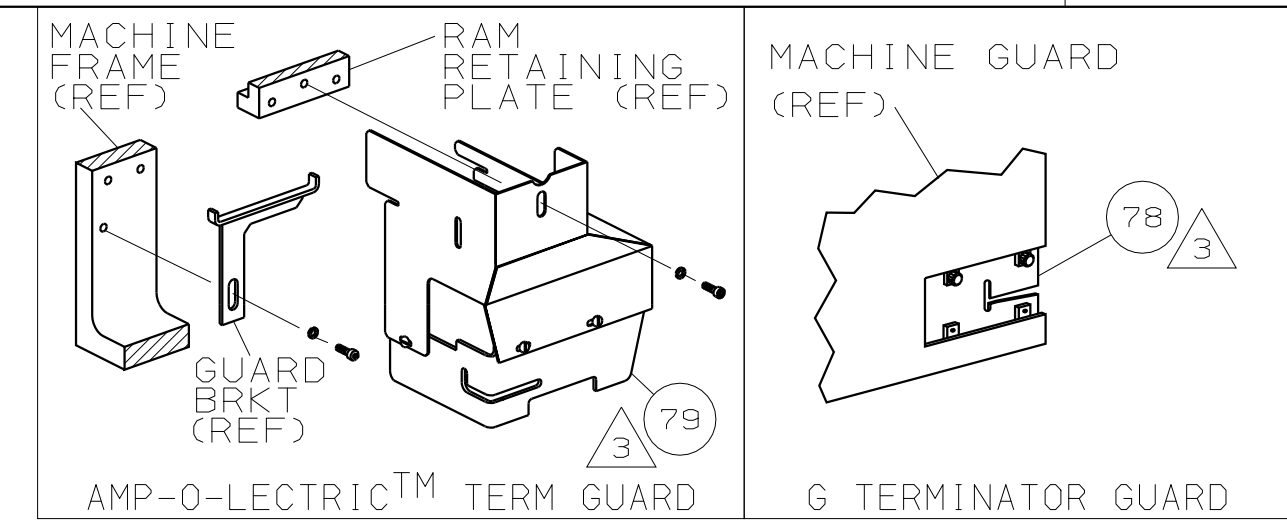
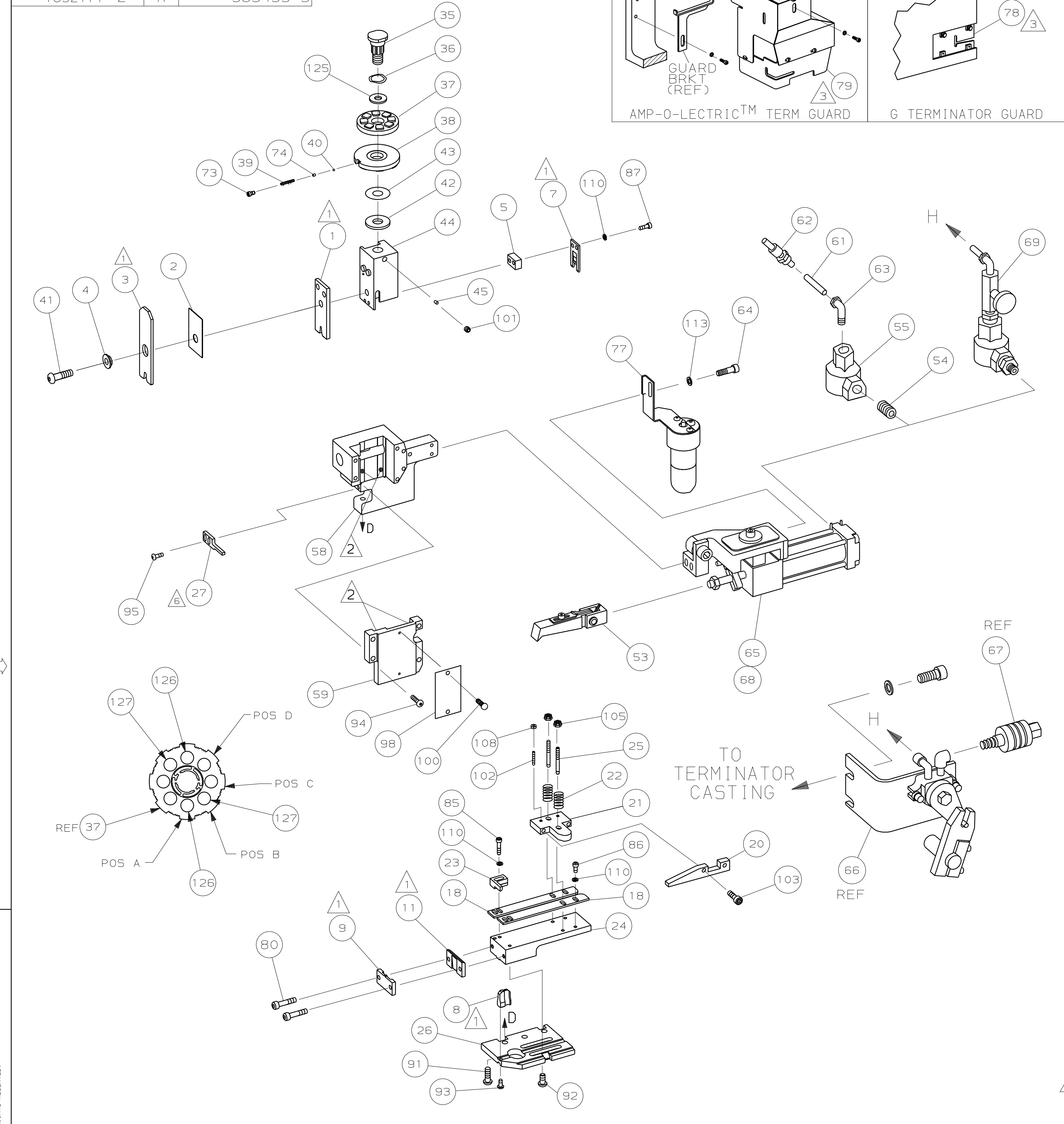


PART NUMBER	REV	FIRST USED
1852171-1	A	122500-1
1852171-2	A	565435-5



AMP TERM PN		MFR TERM PN		ESCUBEDO TERMINAL		AMP CRIMP SPECS				
AMP TERM PN	MFR TERM PN	ESCUBEDO TERMINAL	AMP CRIMP SPECS	WIRE STRIP LENGTH	TERM APPL	SPEC	FEED	APPL INSTRUCTION	SET UP GAGE	LAYOUT
1572880	800031				NONE		1.220	408-8039	458638-1	L4033
		PAD LTR		CRIMP HEIGHT						
		A		.160 ±.003 [4.06 ±0.08mm]						6.0mm ²
		B		.156 ±.003 [3.96 ±0.08mm]						10
		C		NOT						USED
		D		NOT						USED
		CRIMP		SIZE		TYPE				RANGE
		WIRE		.250 [6.35mm]		F				10 AWG-6.0mm ²
		INSUL		.310 [7.87mm]		F				∅.181-.303

REV	QTY	LEADMAKER & BENCH MODEL	AIR FEED	DESCRIPTION	ITEM NO
-1		LEADMAKER & BENCH MODEL G	AIR FEED		
-2		BENCH MODEL K	AIR FEED		
1	1	- C	692655-5	AIR FEED VALVE ASSY	70
1	1	- C	2-460277-0	AIR FEED ASSY (2 INCH)	69
REF	-	- A	24042-2	VALVE, SHUT OFF	67
REF	-	- C	692655-6	AIR FEED VALVE ASSY	66
-1	1	- B	2-460277-6	AIR FEED ASSY (2 INCH)	65
2	2	- A	3-21000-9	SCR,SHC(10-32x1.00)AIR ASSY	64
-1	1	- A	980285-2	ELBOW, SWIVEL 1/8 NPT - 1/4 T	63
-1	1	- A	23238-1	QUICK DISCONNECT	62
-12.00	IN	A	27319-4	TUBING, POLY-FLO ∅.25	61
1	1	- C	454220-1	CAP, RAM	59
1	1	- D	453736-1	HOUSING	58
					57
					56
-1	1	- A	22374-7	VALVE, QUICK EXHAUST	55
-1	1	- A	22304-1	NIPPLE, HEX	54
1	1	- B	460680-1	FEED FINGER ASSY	53
					52
					51
					50
					49
					48
					47
					46
1	1	- A	690191-1	PLUG, NYLON	45
1	1	- C	455674-1	RAM	44
1	1	- A	690125-1	WASHER, LAMINATED	43
1	1	- A	1-690124-0	WASHER, RAM	42
1	1	- A	690686-1	BOLT, CRIMPER(5/16-24x1.00)	41
1	1	- A	23241-6	BALL, STEEL	40
1	1	- A	690170-1	SPRING, COMPRESSION	39
1	1	- C	690142-1	DISC, INSULATION	38
1	1	- D	354777-1	DISC, WIRE	37
1	1	- A	22480-5	WASHER, SPRING	36
1	1	- B	690212-1	POST, RAM	35
					34
					33
					32
					31
					30
					29
					28
1	1	- A	1-690455-0	STRIPPER	27
1	1	- D	455676-1	PLATE, BASE	26
2	2	- A	22354-8	DRAG, STUD	25
1	1	- B	455678-1	PLATE, STRIP GUIDE	24
1	1	- C	240825-5	PLATE, STRIP HOLD DOWN	23
2	2	- A	22281-9	SPRING, DRAG	22
1	1	- A3	464451-1	ARM, STOCK DRAG	21
1	1	- A3	464452-9	DRAG, STOCK	20
					19
2	2	- C	454204-8	GUIDE, STRIP (FRONT)	18
					17
					16
					15
					14
					13
					12
1	1	- B	240644-1	PLATE, REAR SHEAR	11
					10
1	1	- B	690482-4	PLATE, FRONT SHEAR	9
1	1	- D	8-356038-8	ANVIL	8
1	1	- B	4-690474-5	BLADE, SLUG	7
					6
1	1	- C	6-240641-1	SPACER, SLUG BLADE	5
1	1	- B	238009-5	SPACER, BLOCK CRIMPER	4
1	1	- C	8-1424909-5	CRIMPER, INSULATION	3
1	1	- B	2-455888-7	SPACER, CRIMPER	2
1	1	- C	1-1752057-7	CRIMPER, WIRE	1



- 1 RECOMMENDED SPARE PARTS.
- 2 GREASE LIGHTLY.
- 3 GUARD MUST BE IN PLACE WHEN OPERATING APPLICATOR IN A BENCH MACHINE.
- 4 SEE DRAWING FOR COMPONENTS
- 5 ITEM 78 USED WITH G TERMINATOR ONLY.
- 6 MOUNT INVERTED.

QTY	REV	U/M	DWG SIZE	PART NO	DESCRIPTION	ITEM NO
2	2	- C		7-394778-9	PIN, WIRE DISC (.2890)B	129
2	2	- C		7-354778-1	PIN, WIRE DISC (.2850)A	127
1	1	- A		986950-1	WASHER, FLAT PRECISION	125
1	1	- A		217238-1	GENERAL INSTRUCTION PACKAGE	124
1	1	-		4088039	EF APPL INST 408-8039	123
						122
						121
						120
						119
						118
						117
						116
						115
						114
2	2	- A		21024-5	WASHER, LOCK (#10) AIR ASSY	113
						112
7	7	- A		21024-4	WASHER, LOCK (NO.8) SHEAR BL	110
						109
2	2	- A		21018-4	NUT, HEX (4-40) DRAG	108
						107
						106
2	2	- A		21022-2	NUT, HEX SL (8-32) DRAG STUD	105
						104
2	2	- A		1-21000-3	SCR, SHC (4-40x.25) DRAG ARM	103
2	2	- A		2-21006-6	SCR, SKT SET (4-40x.62) DRAG	102
1	1	- A		21009-2	SCR, SKT SET (1/4-20x.25) RAM	101
2	2	- A		21017-2	SCR, DRIVE (#2x.19) ID PLATE	100
						99
1	1	- B		461264-1	PLATE, IDENTIFICATION	98
						97
						96
2	2	- A		2-21002-2	SCR, BHC (8-32x.50) STRIPPER	95
4	4	- A		2-21002-9	SCR, BHC (10-32x.75) CAP	94
1	1	- A		22733-8	SCR, BHC (8-32x.38 LW) ANVIL	93
4	4	- A		3-21002-3	SCR, BHC (1/4-20x.50) ST GD PL	92
3	3	- A		2-22733-8	SCR, BHC (1/4-20x.62) H5G	91
						90
						89
						88
2	2	- A		2-21000-9	SCR, SHC (8-32x.75) SLUG BLADE	87
3	3	- A		2-21000-7	SCR, SHC (8-32x.50) STRIP GUIDE	86
2	2	- A		3-21000-0	SCR, SHC (8-32x.88) R STRIP GUIDE	85
						84
						83
						82
						81
2	2	- A		2-21002-9	SCR, BHC (10-32x.75) SHEAR PL	80
1	-	- A		455750-7	GUARD ASSY	79
-	REF	- A		679532-1	INSERT, GUARD	78
1	-	- C		465184-9	LUBRICATOR ASSY	77
						76
						75
1	1	- A		690603-1	SPRING, ASSIST	74
1	1	- A		23030-1	SCR, SKT CAP (6-32x.25) CP DSC	73
						72
						71

QTY	REV	U/M	DWG SIZE	PART NO	DESCRIPTION	ITEM NO
-2	-1	U/M				

QTY REOD PER ASSY		PARTS LIST	

QTY	REV	U/M	DWG SIZE	PART NO	DESCRIPTION	ITEM NO
-2	-1	U/M				

DIMENSIONS IN INCHES. DO NOT SCALE PRINT.		MATERIAL		FINISH	
TOLERANCES UNLESS OTHERWISE SPECIFIED:		HT TR		FIN	
2 PLC DEC ±.25		-		-	
3 PLC DEC ±		-		-	
4 PLC DEC ±		-		-	
ANGLES ±		-		-	
SURF TEXTURE:		-		-	
REMOVE BURRS, BREAK SHARP EDGES R.015 MAX		-		-	

THIS DRAWING IS A CONTROLLED DOCUMENT.

THIS DRAWING IS UNPUBLISHED. RELEASED FOR PUBLICATION BY AMP INCORPORATED. ALL RIGHTS RESERVED. LOC A DIST 66

1852171

B

A