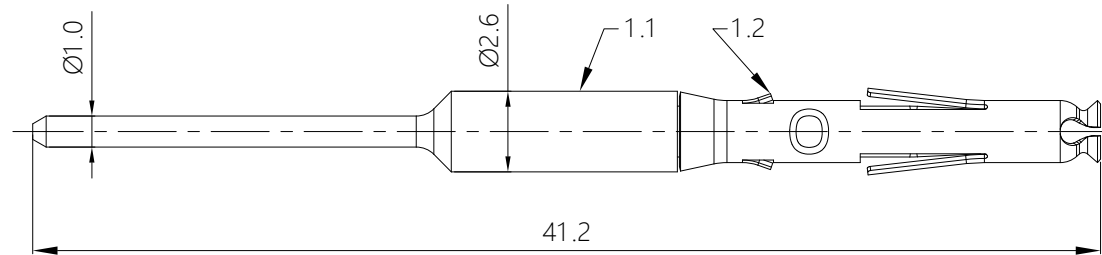


REVISIONS					
REV	ECO	DESCRIPTION	DATE	BY	APPR
A1	-	RELEASED DRAWING	May-12-2020	Flan	Tommy



NOTES: (UNLESS OTHERWISE SPECIFIED)

- MATERIAL:
 - CONTACT BODY: COPPER ALLOY.
 - POSITIONING CLIP: STAINLESS STEEL.
- SPECIFICATIONS:
 - CURRENT RATING : 7.5A(MAX).
 - TERMINATION TYPE: SOLDERING.
- ALL DIMENSION ARE FOR REFERENCE USE ONLY.
- ROHS COMPLIANT.

P/N	CONTACT PLATING(MATING AREA)
MS20W12E09F	GOLD FLASH PLATING OVER NICKEL.
MS20W12E09G5	5μ"GOLD PLATING OVER NICKEL.
MS20W12E09G10	10μ"GOLD PLATING OVER NICKEL.
MS20W12E09G15	15μ"GOLD PLATING OVER NICKEL.
MS20W12E09G30	30μ"GOLD PLATING OVER NICKEL.

QUANTITY	PART NUMBER	DESCRIPTION	ITEM
MATERIALS LIST			
<small>UNLESS OTHERWISE SPECIFIED: 1) All dimensions are in metric(mm). 2) Tolerances are as follows: 1 PL DEC ±0.30 2 PL DEC ±0.15 3 PL DEC ±0.08 Fractions ±1/64 Angles ±1°</small>		SIGNATURES DATE DRAWN: Flan May-11-2020 CHECKED: Orion May-12-2020 ENGINEER: APPROVAL: Tommy May-12-2020	
<small>MATERIAL SPECIFICATIONS:</small>		Amphenol Sine Systems - www.amphenol-sine.com 44724 Morley Drive Clinton Township, MI 48036	
<small>PROCESS SPECIFICATIONS:</small>		CUSTOMER: ECO-MATE, MACHINE, SIZE 20, SOCKET PCB CONTACT	
<small>NEXT ASSY:</small>		<small>THIS DRAWING IS SUPPLIED FOR INFORMATION ONLY. DESIGN FEATURES, SPECIFICATIONS AND PERFORMANCE DATA SHOWN HEREON ARE THE PROPERTY OF THE AMPHENOL CORPORATION. NO RIGHTS OF REPRODUCTION ARE IMPLIED. ALL DIMENSIONS ARE SUBJECT TO NORMAL MANUFACTURING VARIATIONS.</small>	SIZE: B TYPE: C- DWG NO: MS20W12E09xx REVISION: A1 SCALE: NONE SHEET 1 OF 1

TITLE: ECO-MATE, MACHINE, SIZE 20, SOCKET PCB CONTACT
 DWG NO: MS20W12E09xx
 REV: A1
 SH: 1
 OF: 1