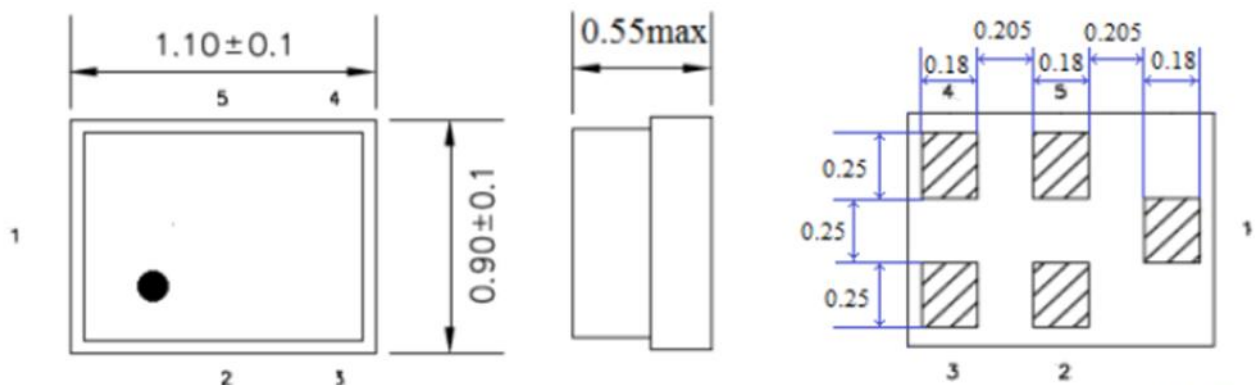


Electrical Specification

Parameters		Value	Unit
Center Frequency		2655.000	MHz
Insertion Loss, typ/max	2620 ~2690 MHz	2.4 / 3.2	dB
Passband Ripple, typ/max	2620 ~2690 MHz	0.7 / 2.0	dB
VSWR, typ/max	2620 ~2690 MHz	ANT	1.6 / 2.2
		R _x	1.7 / 2.2
Amplitude Balance, typ/max	2620 ~2690 MHz	±0.9 / ±1.4	dB
Phase Balance, typ/max	2620 ~2690 MHz	180±7 / 180±12	°
Absolute Attenuation, min/typ	DC ~ 2000 MHz	-40 / -50	dB
	2000 ~ 2380 MHz	-40 / -55	dB
	2380 ~ 2450 MHz	-40 / -55	dB
	2450 ~ 2484 MHz	-40 / -52	dB
	2500 ~ 2570 MHz	-44 / -48	dB
	2750 ~ 4000 MHz	-30 / -35	dB
	4000 ~ 6000 MHz	-25 / -32	dB
Impedance		50 or 100	Ω
Input Power, 2000h		15	dBm
DC Voltage		5	V
ESD Voltage Sensitive Discharge Device	ESD (MM)	50	VDC
	ESD (HBM)	175	VDC
Operating Temperature Range		-30 to +85	°C
Storage Temperature Range		-40 to +85	°C

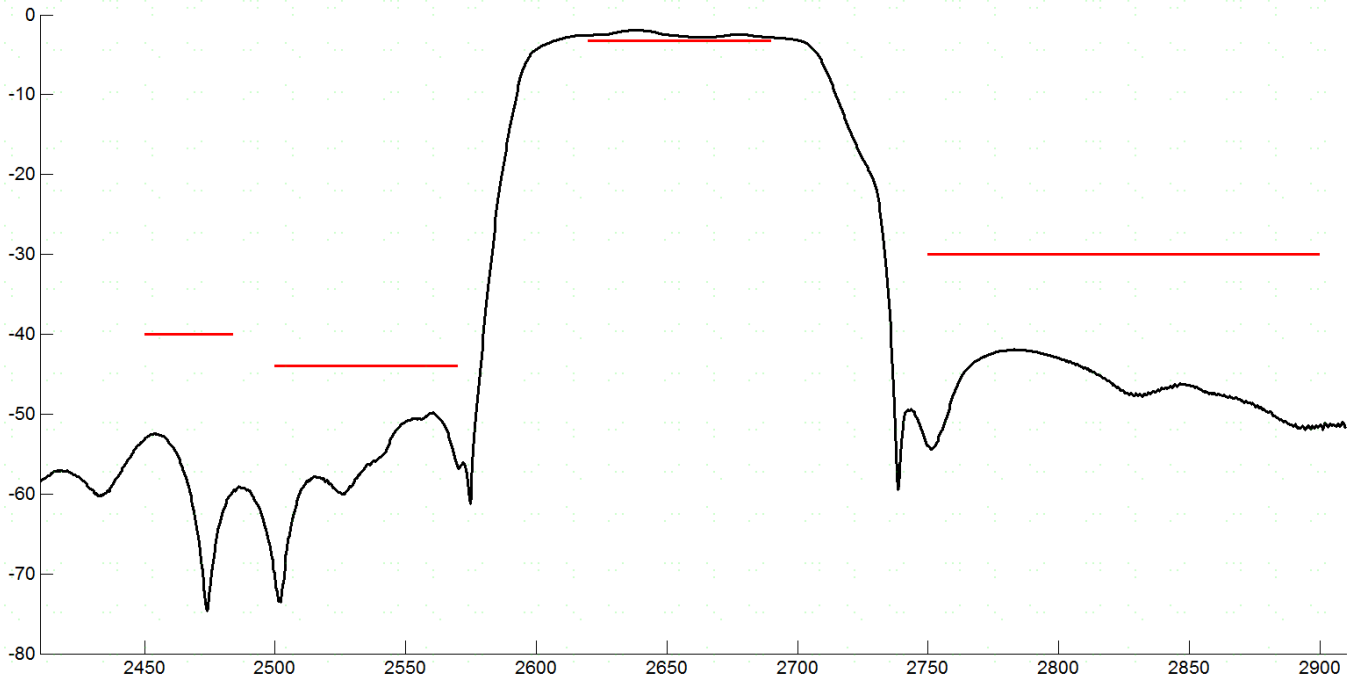
Dimension



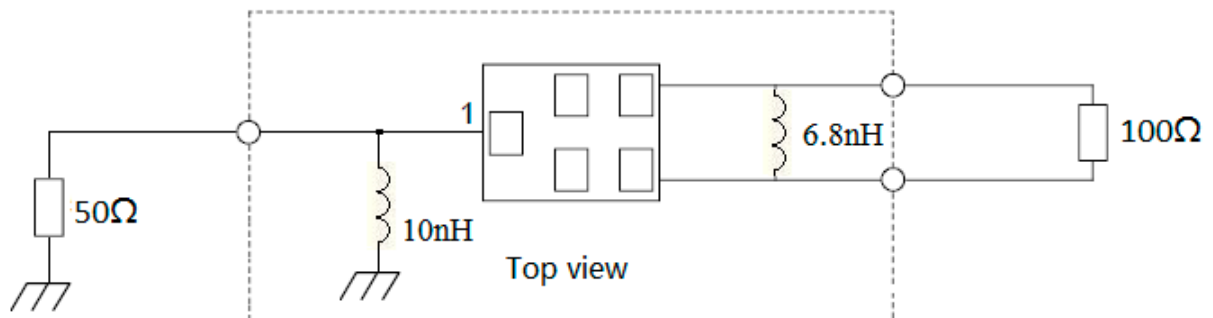
PIN #	PIN NAME	DESCRIPTION
1	Input	Input
3	Output	Balanced
4	Output	Balanced
2,5	GND	Ground

Unit: mm

Frequency Characteristics



Test Circuit

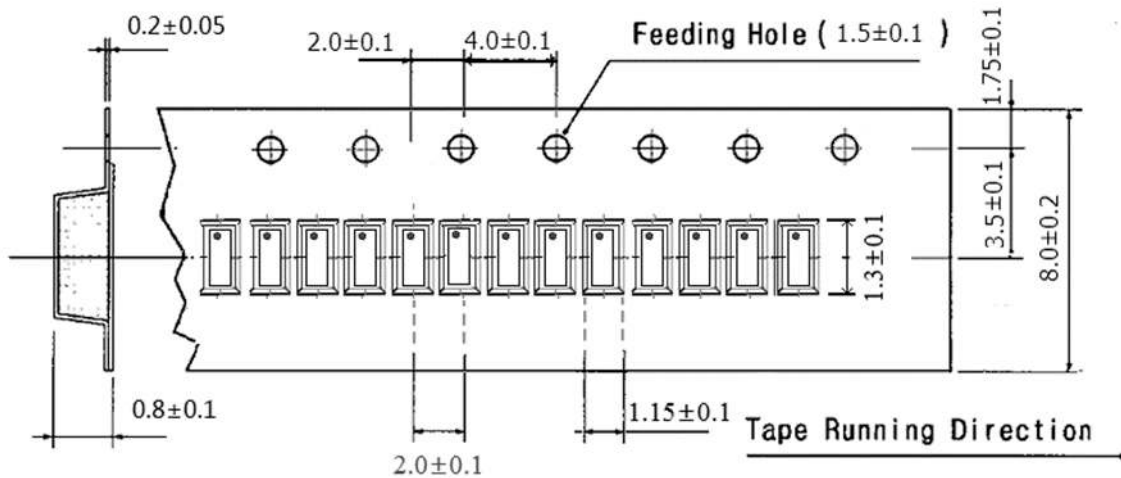


Environmental

PARAMETER	VALUE
MOISTURE SENSITIVITY LEVEL	2
REACH – SVHC	Compliant
RoHS	Compliant



Tape Dimension



APPROVAL

DRAWN BY	ZZ, August 11, 2021
APPROVED BY	AR, August 11, 2021
REVISION	A, Initial Release

Raltron Electronics / RAMI Technology USA, LLC, including its affiliates, employees, agents and other persons acting on its behalf (collectively Raltron/RAMI Tech), disclaim any and all liability for any errors or inaccuracies contained in this data sheet. While Raltron/RAMI Tech has made every reasonable effort to ensure the accuracy of all product information, specifications and data contained herein, Raltron/RAMI Tech does not guarantee that the information is accurate, reliable or current. The product information is provided only for reference purposes only and is subject to change, correction or revision, at any time without notice. Raltron/RAMI Tech does not assume any liability arising out of an application or use of any product described herein and disclaims any warranties expressed or implied. The user of products in such applications shall assume all risks of such use and will agree to hold Raltron/RAMI Tech, harmless against all damages.

Copyright © 2016, Raltron Electronics / RAMI Technology USA, LLC. All rights reserved. No part of this document may be reproduced in any form without the prior written permission of Raltron Electronics / RAMI Technology USA, LLC.