



# 2-10GHz 2-way Wilkinson Power Divider

**PDW06038**



DLI • Novacap • Syfer • Voltronics

www.dilabs.com

www.knowlescapacitors.com

## DESCRIPTION

DLI's 2-10GHz 2-way power divider / combiner offers unmatched size and performance in a surface mount configuration. This power divider utilizes DLI's low loss temperature stable materials which offer small size and minimal performance variation over temperature.

## FEATURES

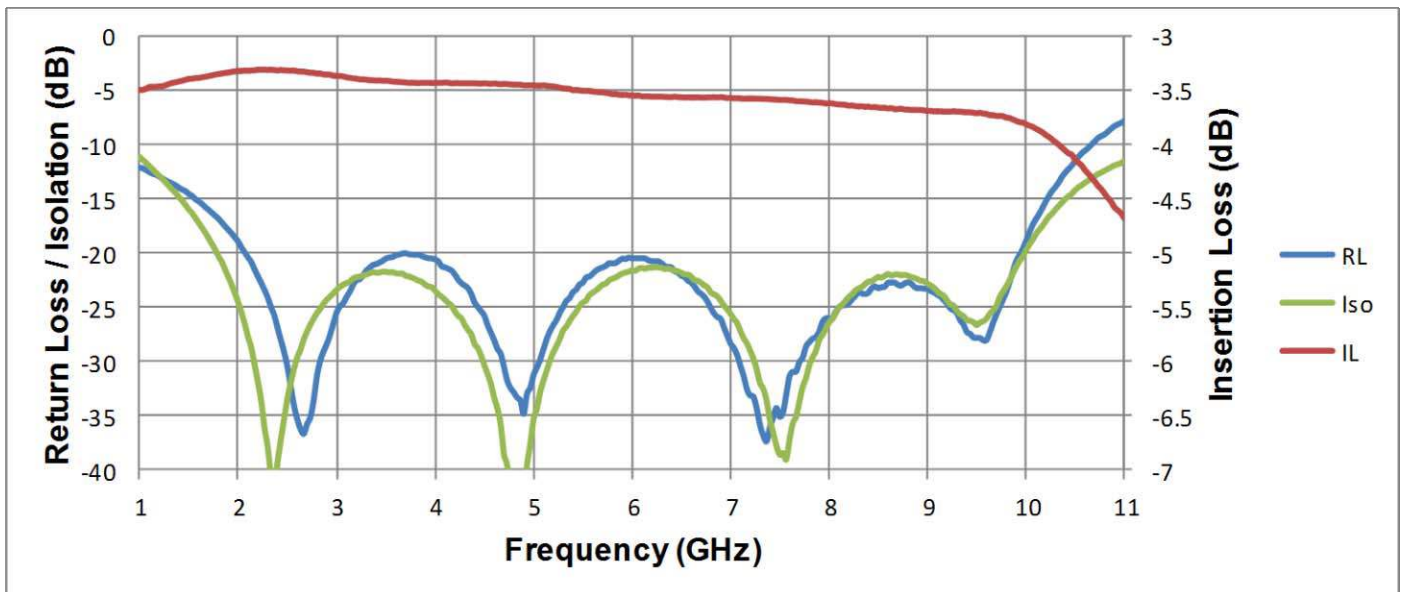
- Small Size
- Broadband 2 to 10GHz Performance
- Frequency Stable over Temperature
- Solder Surface Mount Package
- Excellent Repeatability
- Operating Temp: -55°C to +125°C
- Characteristic Impedance: 50Ω

## SPECIFICATIONS\*

Parameter	Frequency Range (GHz)	Min	Typ.	Max	
Nominal Power Splitting (dB)	2 - 10		3.0		
Nominal Phase Shift (Deg)			0.0		
Amplitude Balance (dB)					± .03
Phase Balance (Deg)					± 3.0
Excess Insertion Loss (dB)					0.8
Return Loss (dB)				20	
Isolation (dB)				20	
Input Power (W)					5

\*Electrical specifications based on typical mounted performance at room temperature. Insertion loss shall vary ±0.5dB over temperature.

## Typical Measured Performance





# 2-10GHz 2-way Wilkinson Power Divider

**PDW06038**



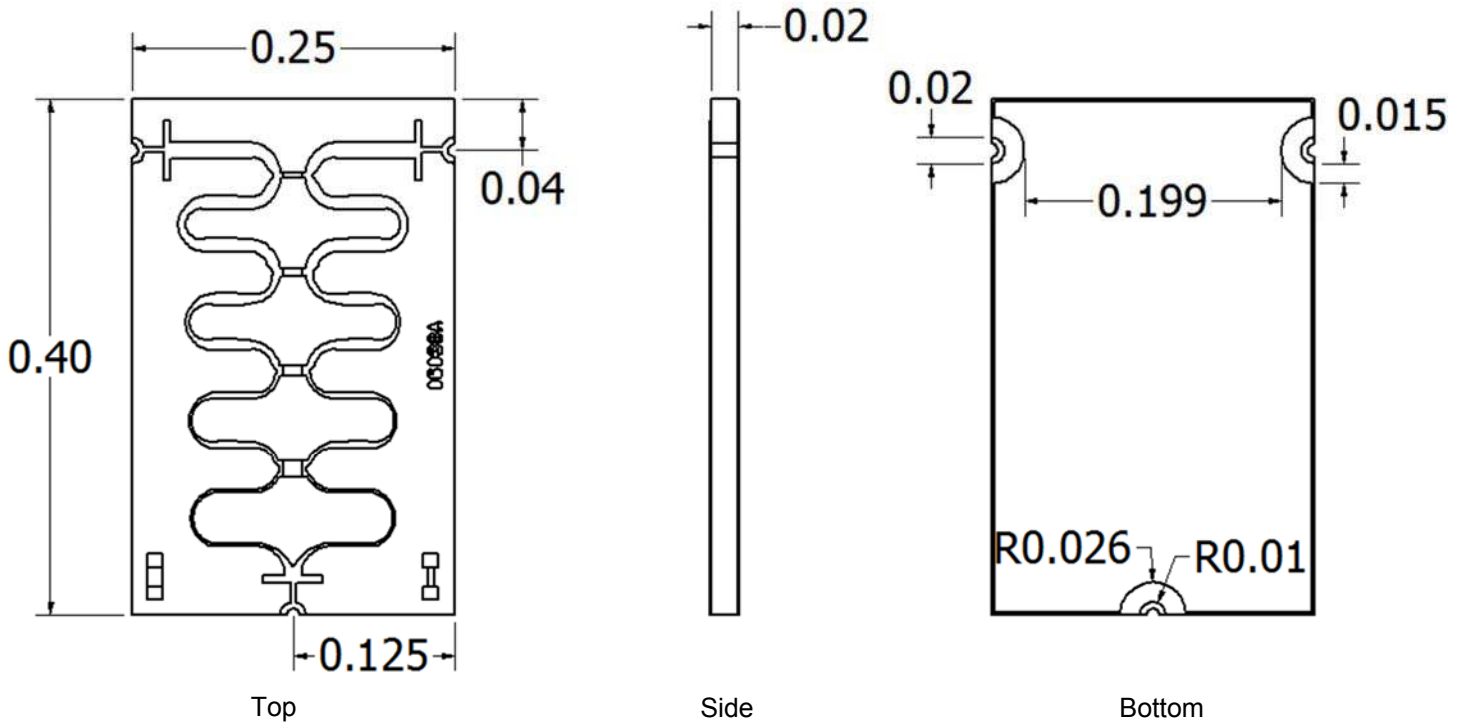
DLI • Novacap • Syfer • Voltronics

www.dilabs.com

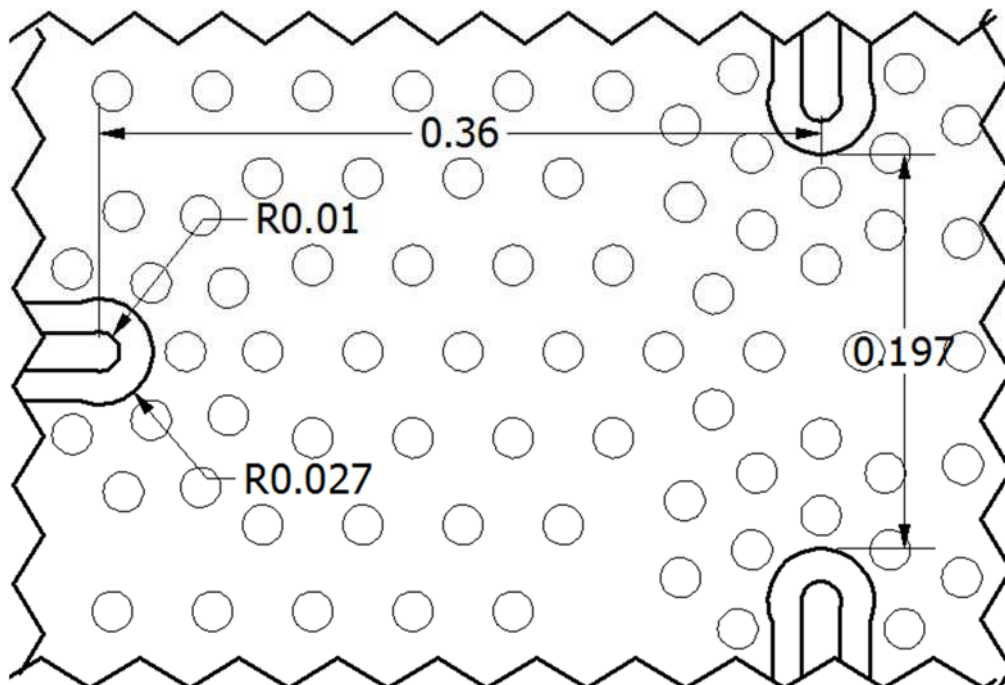
www.knowlesc capacitors.com

## Physical Dimensions

Units = inches



## Recommended PCB Layout



2777 Route 20 East, Cazenovia, NY 13035 | Ph.: (315)655-8710 | KCCSales@knowles.com

February 2015