



MODEL: RC-1206S-1
PRODUCT: Dynamic Receiver
EDITION: A/2016

Soberton Inc.

THIS SPECIFICATION COVERS OUR PRODUCT OF DYNAMIC RECEIVER UNIT FOR MOBILE TELEPHONE USE

RECEIVER ELECTROACOUSTIC CHARACTERISTICS

| | |
|--------------------------|---|
| test set up | Measuring conditions and procedures shown in Fig.1 |
| ac impedance | $32 \pm 15\% \Omega$ (@1KHz 1V) without baffle |
| sound pressure level | $110 \pm 3\text{dB SPL}$ @1.0KHz Sine Wave 179mV with IEC318(0dB SPL= $20\mu\text{Pa}$) |
| measuring condition | 1mW (Sine wave) with baffle shown in Fig. 2 |
| frequency response curve | As shown in Fig. 2 |
| rated noise power | 10mW, normal at a white noise (10mW, 200-3.4KHz) for one minute |
| short term max power | 20mW |
| operation test | Must be free of audible noise (buzzes and rattles) (200 ~3.4KHz frequency range, input level up to 0.56Vrms) |
| distortion | Less than 10% @1KHz 179mV |
| dimension | 12 x 6 x 5 mm |

GENERAL SPECIFICATIONS

| | |
|-----------------------------|--|
| operating temperature range | $-20^{\circ}\text{C} \sim +60^{\circ}\text{C}$ |
| standard test conditions | |
| temperature | $17^{\circ}\text{C} \sim 25^{\circ}\text{C}$ |
| relative humidity | 45%~80%(RH) |

RELIABILITY TESTS

The sound pressure as specified shall neither deviate more than $\pm 3\text{dB}$ from the initial value, nor have any significant damage after any of following testing.

HIGH TEMPERATURE TEST

| | |
|------------------|-----------------------------|
| high temperature | $+60 \pm 2^{\circ}\text{C}$ |
| duration | 96 hours |

LOW TEMPERATURE TEST

| | |
|-----------------|-----------------------------|
| low temperature | $-20 \pm 2^{\circ}\text{C}$ |
| duration | 96 hours |

HEAT SHOCK TEST

| | |
|------------------|-----------------------------|
| high temperature | $+60 \pm 2^{\circ}\text{C}$ |
| low temperature | $-20 \pm 2^{\circ}\text{C}$ |
| changeover time | <30 seconds |
| duration | 1 hour |
| cycle | 100 |

HUMIDITY TEST

| | |
|-------------------|-----------------------------|
| temperature | $+40 \pm 2^{\circ}\text{C}$ |
| relative humidity | 90%~95% |
| duration | 96 hours |



MODEL: RC-1206S-1
PRODUCT: Dynamic Receiver
EDITION: A/2016

RELIABILITY TESTS (Continued)

TEMPERATURE CYCLE TEST

| | | |
|----------------------|-----------|-----------|
| temperature | -20°C | +60°C |
| duration | 45minutes | 45minutes |
| temperature gradient | 1~3°C/min | |
| cycle | 25 | |

DROP TEST

| | |
|-----------------------------|---|
| mounted with dummy set mass | 100 g |
| height | 1.5 m |
| cycle | 6(1 each plain) Onto the concrete board |

LOAD TEST

| | |
|--------------|---|
| Speaker mode | white noise(EIA filter)for 96 hour@10mW input power |
|--------------|---|

MEASURING METHOD (SPEAKER MODE)

STANDARD

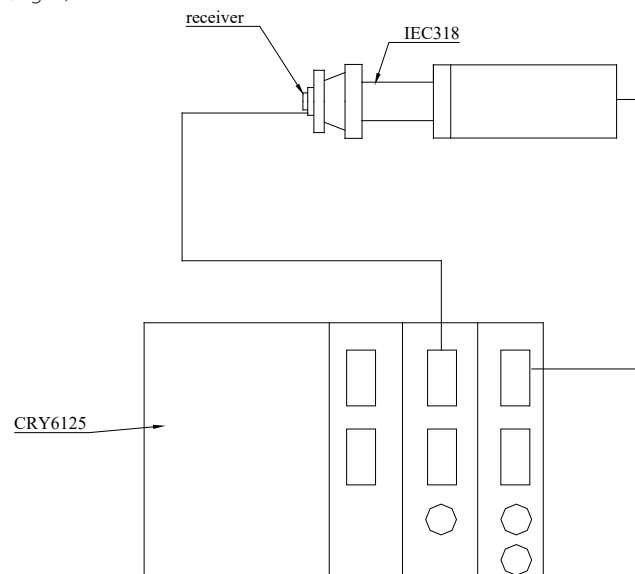
TEST CONDITION

| | |
|----------------------|---------------------|
| temperature | 15 ~ 35°C |
| relative humidity | 45% ~ 85% |
| atmospheric pressure | 860mbar to 1060mbar |

STANDARD TEST FIXTURE

| | |
|---------------------|--------|
| input power | 179mW |
| zero level | -dB |
| mode | TSR |
| potentiometer range | 50dB |
| sweep time | 0.2sec |

MEASURING CONDITIONS (Fig. 1)

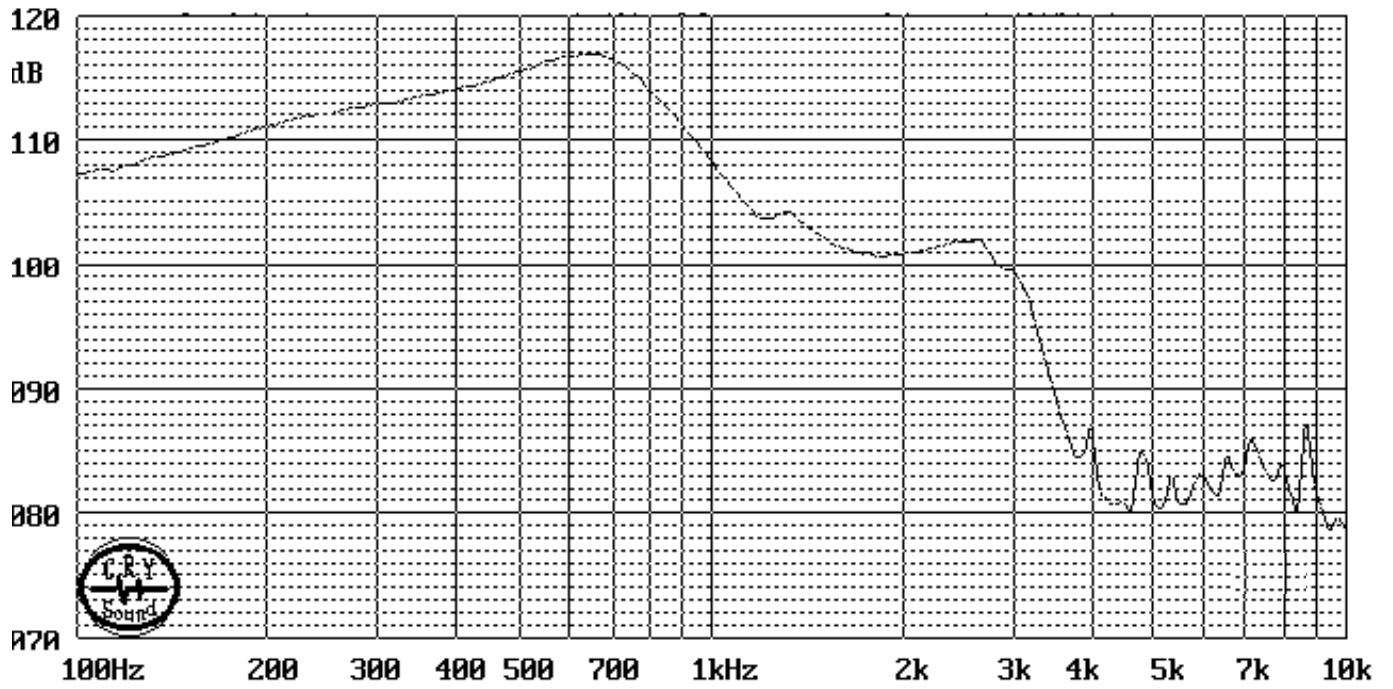




MODEL: RC-1206S-1
PRODUCT: Dynamic Receiver
EDITION: A/2016

Soberton Inc.

FREQUENCY RESPONSE CURVE (Fig. 2)

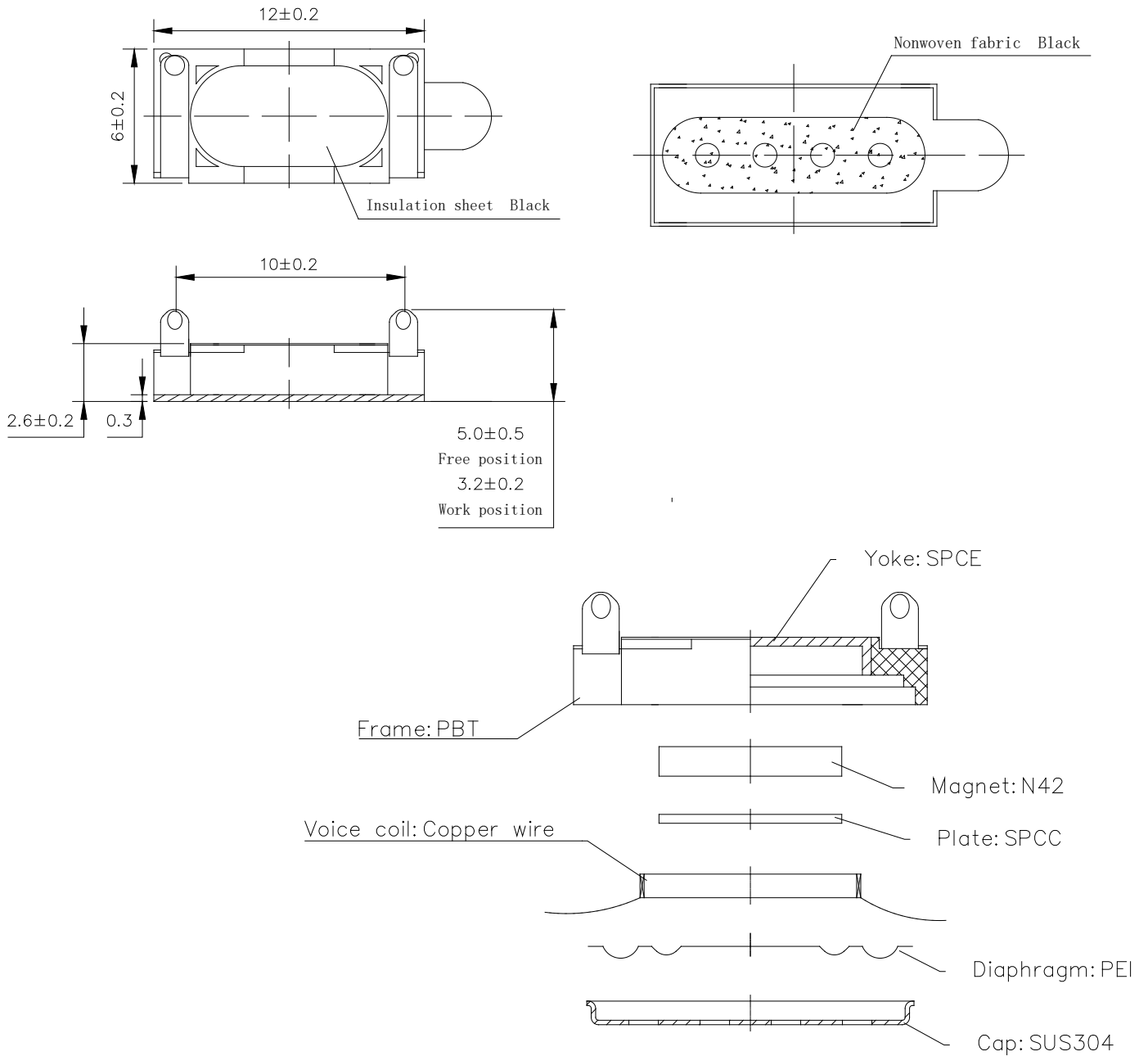




MODEL: RC-1206S-1
PRODUCT: Dynamic Receiver
EDITION: A/2016

DIMENSIONS

Tolerance: ±0.5 (unit: mm)



| no | item | material | quantity |
|----|------------|-------------|----------|
| 1 | Cap | SUS 304 | 1 |
| 2 | Diaphragm | PEI | 1 |
| 3 | Voice Coil | Copper wire | 1 |
| 4 | Plate | SPCC | 1 |
| 5 | Magnet | Nd Fe B | 1 |
| 6 | Frame | PBT | 1 |
| 7 | Yoke | Spce | 1 |



MODEL: RC-1206S-1
PRODUCT: Dynamic Receiver
EDITION: A/2016

Soberton Inc.

PACKING

