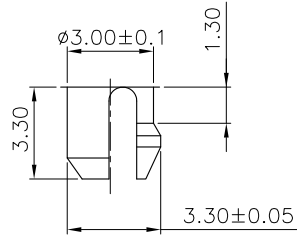
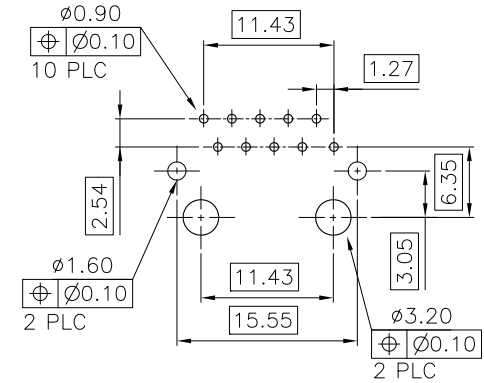
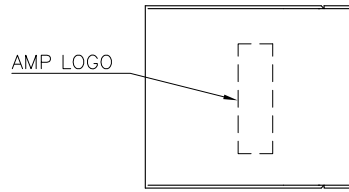


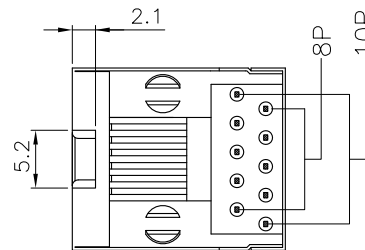
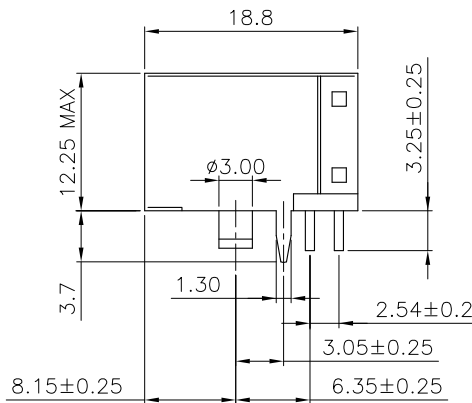
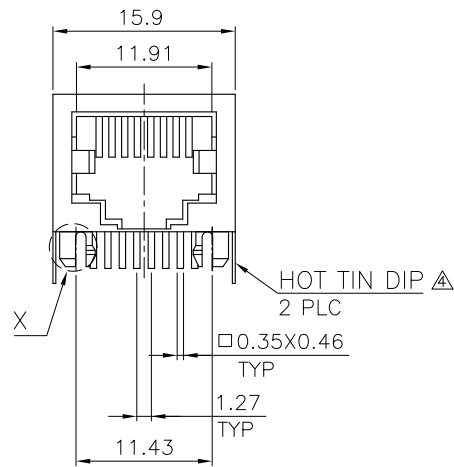
|     |      |           |     |               |         |     |      |
|-----|------|-----------|-----|---------------|---------|-----|------|
| LOC | DIST | REVISIONS |     |               |         |     |      |
| DW  | -    | P         | LTR | DESCRIPTION   | DATE    | DWN | APVD |
|     |      | B3        |     | ECR-12-012115 | 260TC12 | EL  | WK   |



DETAIL X



RECOMMENDED PCB LAYOUT (THICKNESS: 1.6mm)  
 DIMENSION TOLERANCE: 1 PLC: ±0.1 2PLC: ±0.05



|          |        |            |                     |             |
|----------|--------|------------|---------------------|-------------|
| OBSOLETE | 10P8C  | RED        | 50µ"                | 3-1734580-4 |
| OBSOLETE |        |            | 30µ"                | 3-1734580-3 |
| OBSOLETE |        |            | 15µ"                | 3-1734580-2 |
| OBSOLETE |        |            | 6µ"                 | 3-1734580-1 |
| OBSOLETE | 10P10C | BLACK      | 50µ"                | 1-1734580-4 |
|          |        |            | 30µ"                | 1-1734580-3 |
|          |        |            | 15µ"                | 1-1734580-2 |
|          | 10P8C  | BLACK      | 6µ"                 | 1-1734580-1 |
|          |        |            | 50µ"                | 1734580-8   |
|          |        |            | 30µ"                | 1734580-7   |
|          | 10P8C  | BLACK      | 15µ"                | 1734580-6   |
|          |        |            | 6µ"                 | 1734580-5   |
|          |        |            | 50µ"                | 1734580-4   |
|          | 10P8C  | BLACK      | 30µ"                | 1734580-3   |
|          |        |            | 15µ"                | 1734580-2   |
|          |        |            | 6µ"                 | 1734580-1   |
|          | RJ 45  | HSG. COLOR | MIN. GOLD THICKNESS | PART NUMBER |

NOTE:

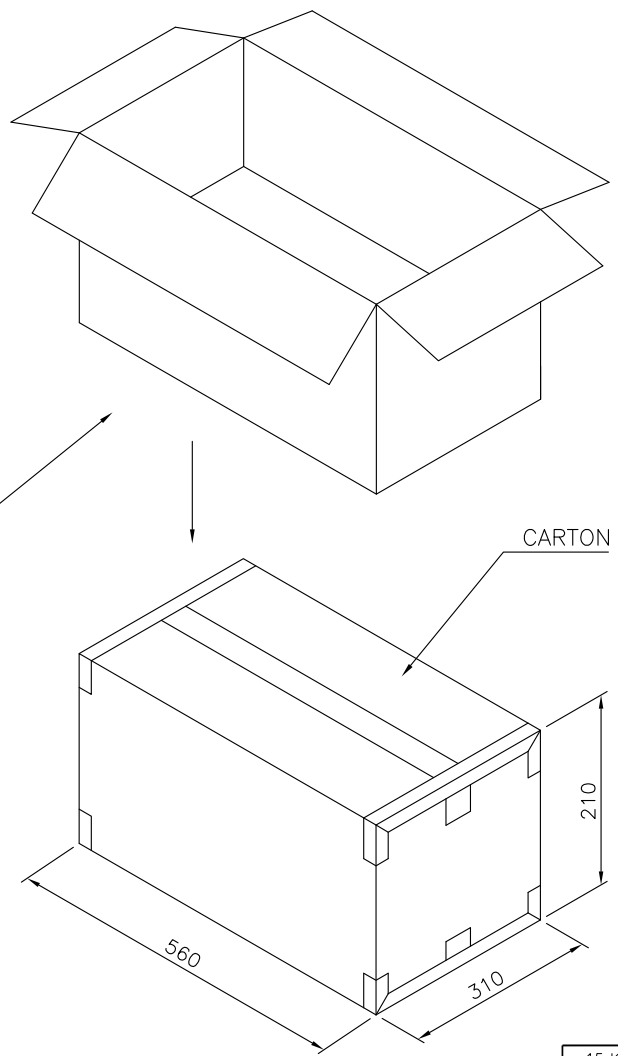
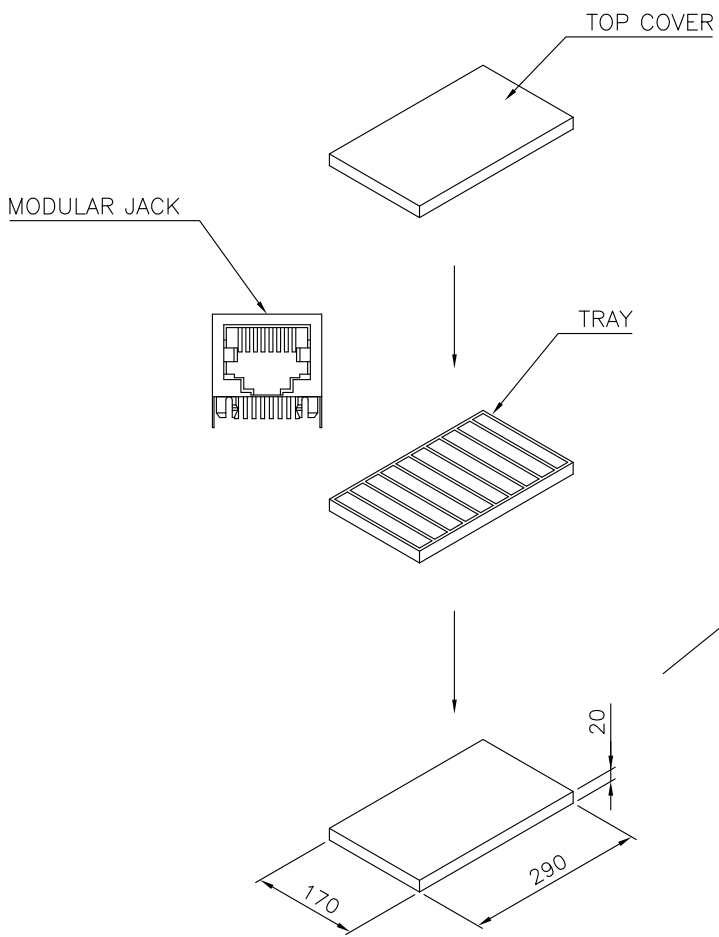
- MATERIAL:  
HOUSING: PA46 WITH 30% GF, UL 94V-0, BLACK COLOR.  
CONTACTS: PHOSPHOR BRONZE, 0.35X0.46 THICKNESS.  
SHIELD: BRASS, 0.25 THICKNESS.
- FINISH:  
CONTACTS: (SEE TABLE) GOLD PLATED ON CONTACT AREA,  
GOLD FLASH ON SOLDER TAILS, WITH ENTIRE  
CONTACT UNDERPLATED 1.27µm [50µ"] MIN. NICKEL.  
SHIELD: 0.508µm [20µ"] MIN. NICKEL PLATED.
- WAVE SOLDER CAPABLE TO 265°C PER 109-202, CONDITION B.

- PREPLATED HOT TIN DIP ON SHIELD'S LEGS.
- OBSOLETE PARTS: OBSOLETE CIS STREAMLINING PER D.RENAUD/D.SINISI


|   |  |                  |           |            |   |
|---|--|------------------|-----------|------------|---|
| THIS DRAWING IS A CONTROLLED DOCUMENT.  |  | DWN              | O. HU     | 01JUN2007  | TE Connectivity<br>MODULAR JACK, RJ45, 8P8C, SHIELDED,<br>SIDE ENTRY, LOW PROFILE |
| DIMENSIONS: MM  |  | CHK              | S. HOU    | 01JUN2007  |   |
| TOLERANCES UNLESS OTHERWISE SPECIFIED:  |  | APVD             | W.J. KE   | 01JUN2007  |   |
| 0 PLC ± 0.50<br>1 PLC ± 0.30<br>2 PLC ± 0.20<br>3 PLC ± 0.10<br>4 PLC ± 0.10<br>ANGLES ± - ± 3° |  | PRODUCT SPEC     | 108-57535 |            |   |
| MATERIAL SEE NOTE   |  | FINISH           | SEE NOTE  |            | QUALIFICATION TEST REPORT   |
|   |  | WEIGHT           |           | 5.25 GRAMS | NAME  |
|   |  | CUSTOMER DRAWING |           | SCALE      | —   |
|   |  | SHEET            |           | 1 OF 2     | REV B3  |
|   |  | SIZE             |           | A3         | CAGE CODE   |
|   |  | DRAWING NO       |           | C=1734580  | RESTRICTED TO   |

THIS DRAWING IS UNPUBLISHED. RELEASED FOR PUBLICATION  
 © COPYRIGHT BY TYCO ELECTRONICS CORPORATION. ALL RIGHTS RESERVED.

| LOC          |  | DIST |  | REVISIONS |     |             |      |     |      |
|--------------|--|------|--|-----------|-----|-------------|------|-----|------|
| DW           |  | -    |  | P         | LTR | DESCRIPTION | DATE | DWN | APVD |
| SEE SHEET 1. |  |      |  |           |     |             |      |     |      |



|              |            |          |               |          |
|--------------|------------|----------|---------------|----------|
| 15 Kg        | 13.5 Kg    | 100      | 25            | 2500 PCS |
| GROSS WEIGHT | NET WEIGHT | PCS/TRAY | TRAYS /CARTON | QUANTITY |

|  |     |        |         |                  |  |           |            |               |       |     |       |     |        |     |      |  |
|--|-----|--------|---------|------------------|--|-----------|------------|---------------|-------|-----|-------|-----|--------|-----|------|--|
| THIS DRAWING IS A CONTROLLED DOCUMENT.   |     | DWN    | O. HU   | 01JUN2007        |  <b>TE Connectivity</b> |           |            |               |       |     |       |     |        |     |      |  |
| DIMENSIONS: MM   |     | CHK    | S. HOU  | 01JUN2007        |  |           |            |               |       |     |       |     |        |     |      |  |
| TOLERANCES UNLESS OTHERWISE SPECIFIED:   |     | APVD   | W.J. KE | 01JUN2007        |  |           |            |               |       |     |       |     |        |     |      |  |
| <table border="0"> <tr><td>0 PLC</td><td>± -</td></tr> <tr><td>1 PLC</td><td>± -</td></tr> <tr><td>2 PLC</td><td>± -</td></tr> <tr><td>3 PLC</td><td>± -</td></tr> <tr><td>4 PLC</td><td>± -</td></tr> <tr><td>ANGLES</td><td>± -</td></tr> </table> |     | 0 PLC  | ± -     | 1 PLC            |  | ± -       | 2 PLC      | ± -           | 3 PLC | ± - | 4 PLC | ± - | ANGLES | ± - | NAME |  |
| 0 PLC  | ± - |        |         |                  |  |           |            |               |       |     |       |     |        |     |      |  |
| 1 PLC  | ± - |        |         |                  |  |           |            |               |       |     |       |     |        |     |      |  |
| 2 PLC  | ± - |        |         |                  |  |           |            |               |       |     |       |     |        |     |      |  |
| 3 PLC  | ± - |        |         |                  |  |           |            |               |       |     |       |     |        |     |      |  |
| 4 PLC  | ± - |        |         |                  |  |           |            |               |       |     |       |     |        |     |      |  |
| ANGLES   | ± - |        |         |                  |  |           |            |               |       |     |       |     |        |     |      |  |
| MATERIAL   |     | FINISH |         | PRODUCT SPEC     | SIZE   | CAGE CODE | DRAWING NO | RESTRICTED TO |       |     |       |     |        |     |      |  |
|  |     |        |         | APPLICATION SPEC | A3   | 00779     | ©=1734580  | -             |       |     |       |     |        |     |      |  |
| CUSTOMER DRAWING   |     |        |         | WEIGHT           | SCALE  | SHEET     | 2 of 2     | REV B3        |       |     |       |     |        |     |      |  |
|  |     |        |         | -                | -  | -         | -          | -             |       |     |       |     |        |     |      |  |