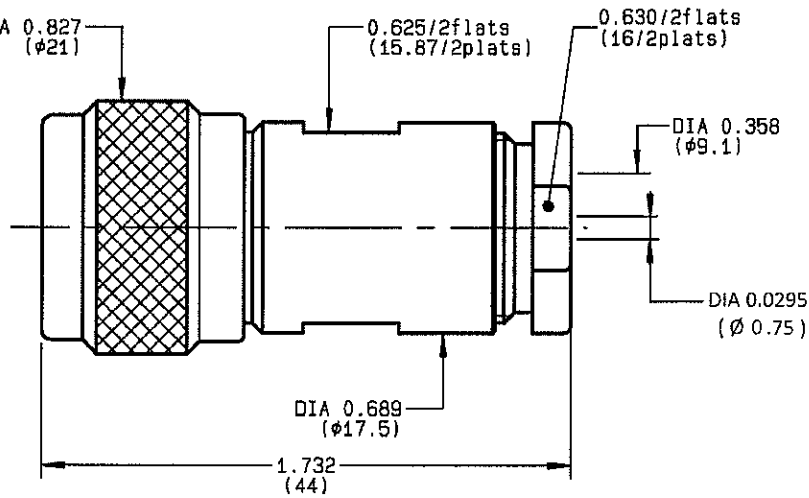



STRAIGHT PLUG CLAMP TYPE CABLE 8/75 D	R162.013.000 SERIES N 75
--	------------------------------------



NOMINAL IMPEDANCE	75 Ω	CABLES : M17/2- RG6
FREQUENCY RANGE	0-1.5 GHz	
TEMPERATURE RATING	-55/+155 °C	
V.S.W.R	1.06 + x F(GHz)Maxi	
RF INSERTION LOSS	0.15 √F(GHz) dB Maxi	
VOLTAGE RATING	1400 Veff Maxi	
DIELECTRIC WITHSTANDING VOLTAGE	2500 Veff Mini	
INSULATION RESISTANCE	5000 MΩMini	OTHERS CHARACTERISTICS
HERMETIC SEAL	NA Atm.cm ³ /s	CABLE RETENTION
LEAKAGE (pressurized only)	NA	200 N Mini
MECHANICAL DURABILITY	500 Cycles	CENTER CONTACT RETENTION
WEIGHT	53.2 gr	Axial force - mating end
SPECIFICATION		NA N Mini
		Axial force - opposite end
		NA N Mini
		Torque
		NA cm.N Mini
		RECOMMENDED TORQUES
		Mating
		130 cm.N
		Panel nut
		NA cm.N
		Clamp nut
		500 cm.N

CONNECTOR PARTS:	MATERIALS	FINISH
BODY	BRASS	BBR 2
OUTER CONTACT	BRASS	BBR 2
CENTER CONTACT	BRASS	GOLD 0.5 OVER NICKEL 2
INSULATOR	PTFE	-
GASKET	SILICONE RUBBER	-
OTHERS PIECES	BRASS	BBR 2

(all values are given in micrometers)

ISSUE 1135D01	CREATION DATE 26/10/1993	FILE PART-NUMBER EPC 96-07	
-------------------------	------------------------------------	--------------------------------------	--

BONDINI

The information given here is subject to change without notice. Design changes may be in order to improve the product.

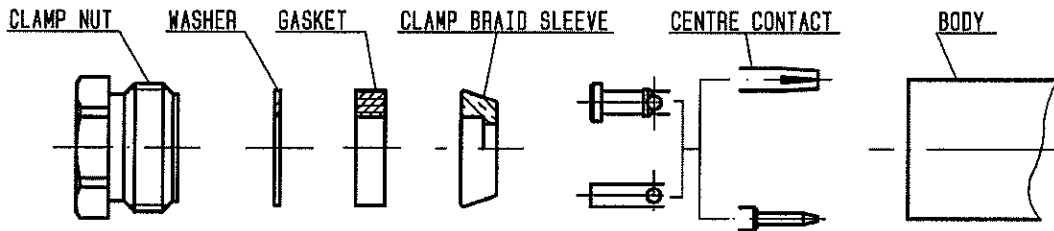
Connect to the future



R162.013.000

ISSUE 1135D01

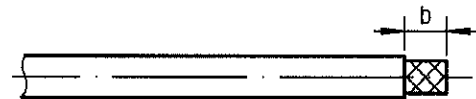
SERIES
N 75



①

Strip the cable .

-
-
-
-

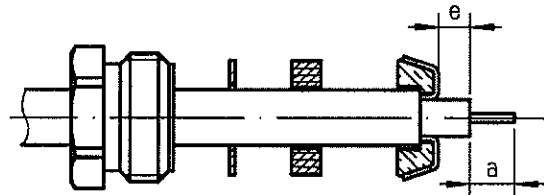


Stripping	a	b	c	d	e
inch	0.177	0.394	0	0	0.059
mm	4.5	10			1.5

②

Slide the clamp nut , the washer and the gasket onto the cable .
Slide clamp braid sleeve over braid .
Fold back braid and trim off surplus braid .
Trim back dielectric as shown .

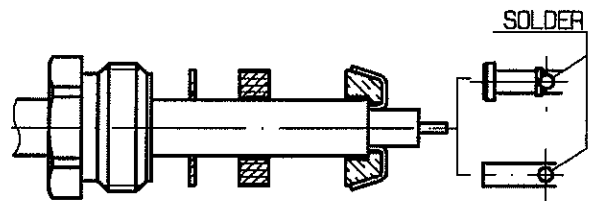
-



③

Solder the cable inner conductor into centre contact .

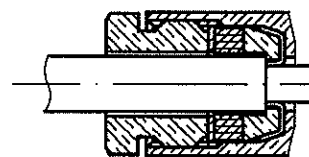
-
-
-
-



④

Screw sub-assembly into the connector body .
(recommended coupling torque 44.25 in.lb)

-
-



Hex. : 0.63/flats

BONDMINI