

CCM05 SD / MMC



Our MKII series, accepts both Secure Data (SD) and Multi Media Card (MMC) flash memory cards. The 9 contact interconnect comes in different thickness.

When only multi-media card is needed, our MKI family will fit your requirements.

You can integrate them in applications such as cellular phones, PDA, smart phones, MP3 players, handheld GPS, electronic books, industrial controls or wherever portable memory is needed.

Features

- Hot insertion contact configuration.
- Fixed metal cover to guarantee positioning of the card and to help PCB holding with the side solder tabs.
- Space saving design with maximum card guidance and upholding.
- Safe manual operation with spoon shaped contacts, placed in the direction of the card insertion.
- Insulator made of high temperature thermoplastic suitable for infrared and convection soldering process.
- With tape and reel packaging as standard, the interconnects are designed to be automatically picked and placed.

Construction

Contacts	Copper alloy
Plating	Contact area : Gold alloy inlay or gold over nickel Terminals : Tin lead (2µ min)
Moldings	High temp. thermoplastic UL 94V-0 rated

Mechanical Data

Number of Contacts	7 or 9 (SD)
Mechanical life	10,000 cycles min
Card insertion force	3 N max
Card extraction force	0.8 N min / 3 N max
Contact force	0.25 N min / 0.50 N max
Vibration	Frequency 10 to 500 Hz. Acceleration 50m/s ² Duration 6 hours - amplitude 0.35 mm Max electrical discontinuity 1µs
Shock	Peak value 500 m/s ² - Duration 11 ms 3 shocks in each direction of each axis Max electrical discontinuity 1 µs

Electrical Data

Insulation resistance	1,000 MΩ min
Contact resistance max.	100 mΩ min
Switching current	10 µA min / 1 A max
Dielectric strength	750 Vrms min

Environmental Data

Operating temperature	-40°C to +85°C
Soldering temperature	Temperature/time profile acc. to CECC00802 para. 6.1, Fig. 3 with peak temperature 250°C
Damp heat	IEC 512 test number 11c (10 days)
Salt mist	IEC 512 test number 11f (96 hours)

Ordering Code

Part Number	Number of Contacts	Cover	Card	PCB Locating	Quantity per reel	Contact Finish
CCM05-5501	7	Standard	MMC	No	900	Inlay
CCM05-5502	7	Standard	MMC	Yes	900	Inlay
CCM05-5507	9	3,1mm	SD/MMC	No	600	Gold
CCM05-5761	9	3,65mm	SD/MMC	No	600	Gold

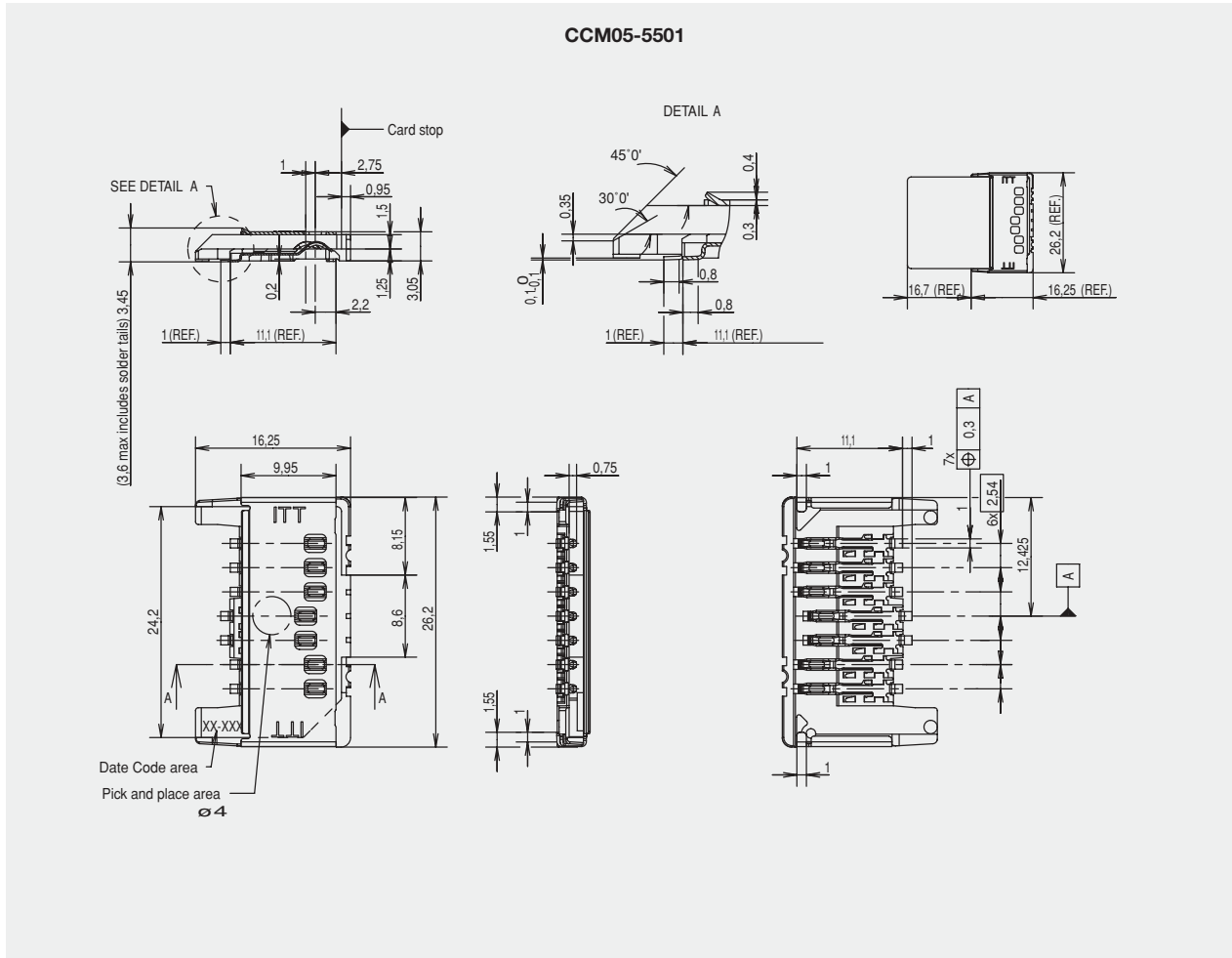
For flat cover, inlay contacts finish on SD/MMC, please contact your local Cannon Customer Service Center.

Packaging

5 reels per box.

CCM05 SD / MMC

Dimensional Drawings



PCB Layout

