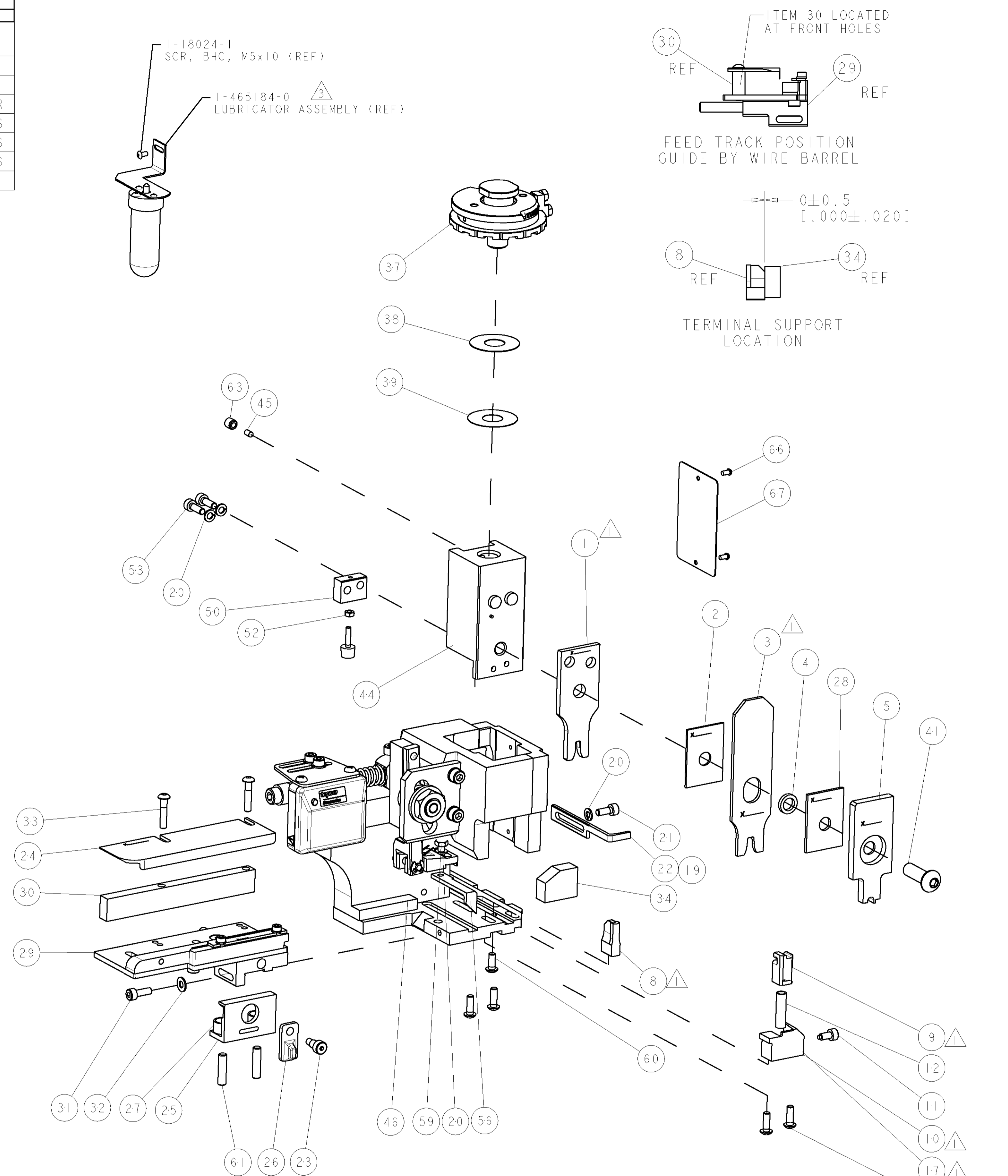


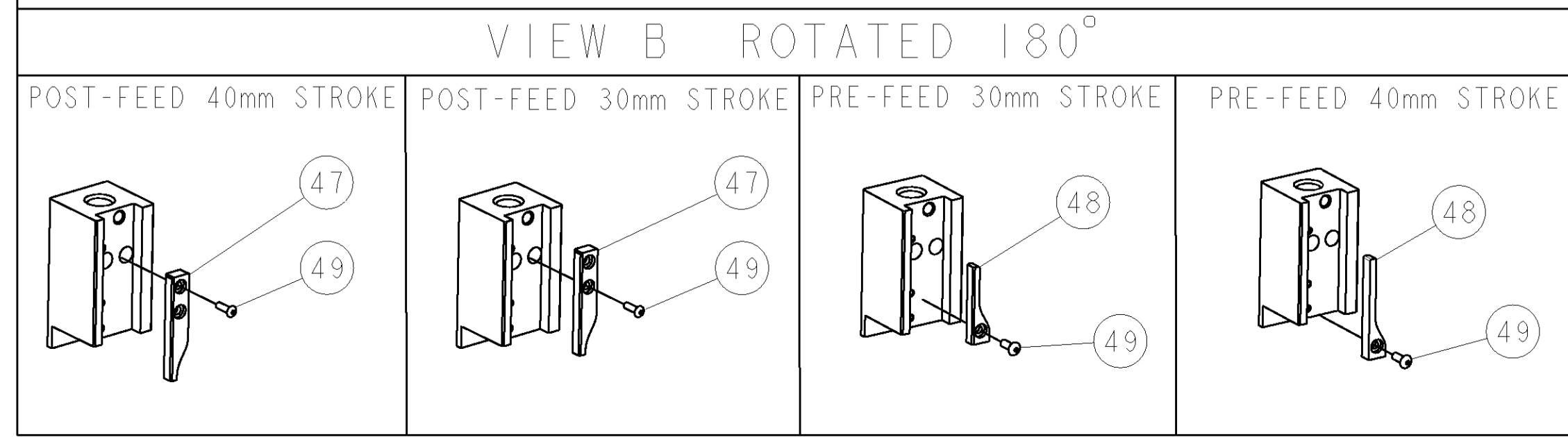
PART NUMBER	REV	TERMINATOR	FEED TYPE	DESCRIPTION
1528641-1	A	LEADMAKER	MECH POST FEED	CUTS CARRIER
1528641-2	A	BENCH	MECH PRE FEED	CUTS CARRIER
1528641-6	A	LEADMAKER	MECH POST FEED	CONTINUOUS CARRIER
7-1528641-1	A	LEADMAKER	MECH POST FEED	-1 AND SPARE PARTS
7-1528641-2	A	BENCH	MECH PRE FEED	-2 AND SPARE PARTS
7-1528641-6	A	LEADMAKER	MECH POST FEED	-6 AND SPARE PARTS
7-1528641-7	A	-	-	SPARE PARTS KIT

CRIMP DATA		SUMITOMO TERMINAL		TYCO CRIMP SPEC	
TERMINAL NAME: MINIFUSE L SIZE TERMINAL					
CRIMP	SIZE	TYPE	RANGE		
WIRE	3.05 [1.120 IN]	F	2.00mm <sup>2</sup> -3.00mm <sup>2</sup>		
INSUL	4.83 [1.190 IN]	F	2.80-3.80 [1.110-1.150 IN]		
WIRE STRIP LENGTH		APPL INSTRUCTIONS			
4.80-5.60 [1.189-.220 IN]		408-8322 & 408-8490			
TERMINAL APPL SPEC		FEED		14.48 [1.570 IN]	
TERMINALS APPLIED					
TYCO PN	MANUF'S PN				
1949018-1	8100-1237				
WIRE SIZE	CRIMP HEIGHT	REF SETTING			
3.00mm <sup>2</sup>	2.13 ±0.05 [1.084 ±.002 IN]	C 7			
2.50mm <sup>2</sup>	2.03 ±0.05 [1.080 ±.002 IN]	D 3			
2.00mm <sup>2</sup>	1.90 ±0.05 [1.075 ±.002 IN]	E 1			

- △ RECOMMENDED SPARE PARTS.
- 2. GREASE RAM, CAM, CAM FOLLOWER AND FEED ROD LIGHTLY.
- △ CERTAIN TERMINALS REQUIRE LUBRICATION. REFER TO THE APPLICATOR INSTRUCTION SHEET FOR MORE INFORMATION.
- 4. LUBRICATE DAILY PER THE APPLICATOR INSTRUCTION SHEET SUPPLIED WITH THE APPLICATOR.
- △ CRIMP DATA CALCULATED BY TYCO ELECTRONICS.
- △ TERMINAL APPLIES TYPE AVS INSULATION.



\* WARNING  
ON INSTALLATION, SET WIRE DISC TO LARGEST WIRE SIZE SETTING. USE OF SETTINGS BELOW MIN. REQUIRED CRIMP HEIGHT SETTING WILL CAUSE DAMAGE TO CRIMP TOOLING.



-77	-76	-72	-71	-6	-2	-1	PART NO	DESCRIPTION	ITEM NO
-	-	-	-	-	-	-	-	-	84
-	-	-	-	-	-	-	-	-	83
-	-	-	-	-	-	-	-	-	82
-	-	-	-	-	-	-	-	-	81
-	-	-	-	-	-	-	-	-	80
-	-	-	-	-	-	-	-	-	79
-	-	-	-	-	-	-	-	-	78
-	-	-	-	-	-	-	-	-	77
-	-	-	-	-	-	-	-	-	76
-	-	-	-	-	-	-	-	-	75
-	-	-	-	-	-	-	-	-	74

SET UP GAGE		REV A		66		REVISIONS			
LOC	DIST	P	LTR	DESCRIPTION	DATE	BY	APPD	DATE	BY
A	66	A	SEE ECO-06-009592		25APR2006	LJL	MC		

-	-	-	-	-	-	-	-	-	-	73
-	-	-	-	-	-	-	-	-	-	72
-	-	-	-	-	-	-	-	-	-	71
-	-	-	-	-	-	-	-	-	-	70
-	-	-	-	-	-	-	-	-	-	69
-	-	-	-	-	-	-	-	-	-	68
-	-	-	-	-	-	-	-	-	-	67
-	-	-	-	-	-	-	-	-	-	66
-	-	-	-	-	-	-	-	-	-	65
-	-	-	-	-	-	-	-	-	-	64
-	-	-	-	-	-	-	-	-	-	63
-	-	-	-	-	-	-	-	-	-	62
-	-	-	-	-	-	-	-	-	-	61
-	-	-	-	-	-	-	-	-	-	60
-	-	-	-	-	-	-	-	-	-	59
-	-	-	-	-	-	-	-	-	-	58
-	-	-	-	-	-	-	-	-	-	57
-	-	-	-	-	-	-	-	-	-	56
-	-	-	-	-	-	-	-	-	-	55
-	-	-	-	-	-	-	-	-	-	54
-	-	-	-	-	-	-	-	-	-	53
-	-	-	-	-	-	-	-	-	-	52
-	-	-	-	-	-	-	-	-	-	51
-	-	-	-	-	-	-	-	-	-	50
-	-	-	-	-	-	-	-	-	-	49
-	-	-	-	-	-	-	-	-	-	48
-	-	-	-	-	-	-	-	-	-	47
-	-	-	-	-	-	-	-	-	-	46
-	-	-	-	-	-	-	-	-	-	45
-	-	-	-	-	-	-	-	-	-	44
-	-	-	-	-	-	-	-	-	-	43
-	-	-	-	-	-	-	-	-	-	42
-	-	-	-	-	-	-	-	-	-	41
-	-	-	-	-	-	-	-	-	-	40
-	-	-	-	-	-	-	-	-	-	39
-	-	-	-	-	-	-	-	-	-	38
-	-	-	-	-	-	-	-	-	-	37
-	-	-	-	-	-	-	-	-	-	36
-	-	-	-	-	-	-	-	-	-	35
-	-	-	-	-	-	-	-	-	-	34
-	-	-	-	-	-	-	-	-	-	33
-	-	-	-	-	-	-	-	-	-	32
-	-	-	-	-	-	-	-	-	-	31
-	-	-	-	-	-	-	-	-	-	30
-	-	-	-	-	-	-	-	-	-	29
-	-	-	-	-	-	-	-	-	-	28
-	-	-	-	-	-	-	-	-	-	27
-	-	-	-	-	-	-	-	-	-	26
-	-	-	-	-	-	-	-	-	-	25
-	-	-	-	-	-	-	-	-	-	24
-	-	-	-	-	-	-	-	-	-	23
-	-	-	-	-	-	-	-	-	-	22
-	-	-	-	-	-	-	-	-	-	21
-	-	-	-	-	-	-	-	-	-	20
-	-	-	-	-	-	-	-	-	-	19
-	-	-	-	-	-	-	-	-	-	18
-	-	-	-	-	-	-	-	-	-	17
-	-	-	-	-	-	-	-	-	-	16
-	-	-	-	-	-	-	-	-	-	15
-	-	-	-	-	-	-	-	-	-	14
-	-	-	-	-	-	-	-	-	-	13
-	-	-	-	-	-	-	-	-	-	12
-	-	-	-	-	-	-	-	-	-	11
-	-	-	-	-	-	-	-	-	-	10
-	-	-	-	-	-	-	-	-	-	9
-	-	-	-	-	-	-	-	-	-	8
-	-	-	-	-	-	-	-	-	-	7
-	-	-	-	-	-	-	-	-	-	6
-	-	-	-	-	-	-	-	-	-	5
-	-	-	-	-	-	-	-	-	-	4
-	-	-	-	-	-	-	-	-	-	3
-	-	-	-	-	-	-	-	-	-	2
-	-	-	-	-	-	-	-	-	-	1

LOC	DIST	P	LTR	DESCRIPTION	DATE	BY	APPD
-77	-76	-72	-71	-6	-2	-1	PART NO
-77	-76	-72	-71	-6	-2	-1	DESCRIPTION

DIMENSIONS:		TOLERANCES UNLESS OTHERWISE SPECIFIED:	
mm [IN]		0 PLC	±
		1 PLC	±
		2 PLC	±
		3 PLC	±
		4 PLC	±
		ANGLES	±

MATERIAL	FINISH	WEIGHT	SCALE	SHEET	OF	REV
-	-	-	3:5	1	1	A

TYCO	DESCRIPTION	ITEM NO
1528641-1	FINE ADJUST SIDE FEED HDI APPLICATOR	1