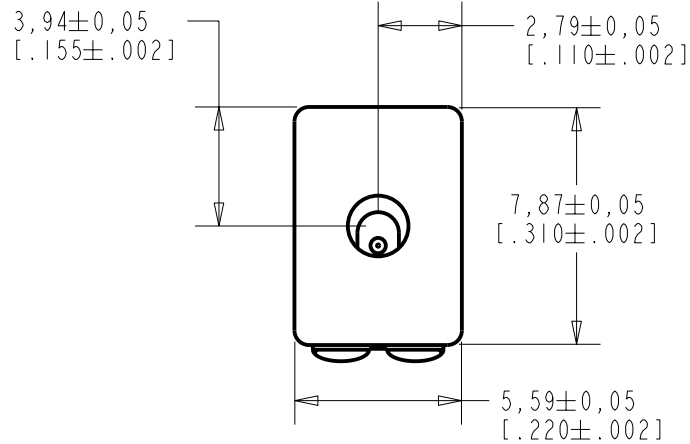
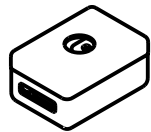
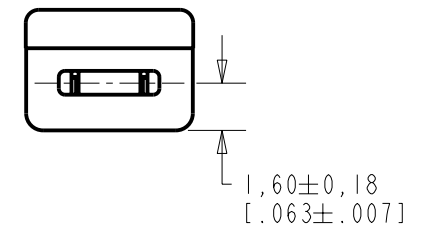
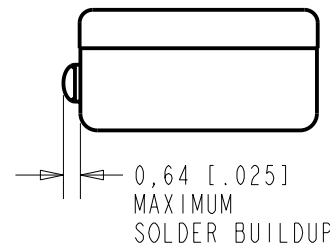
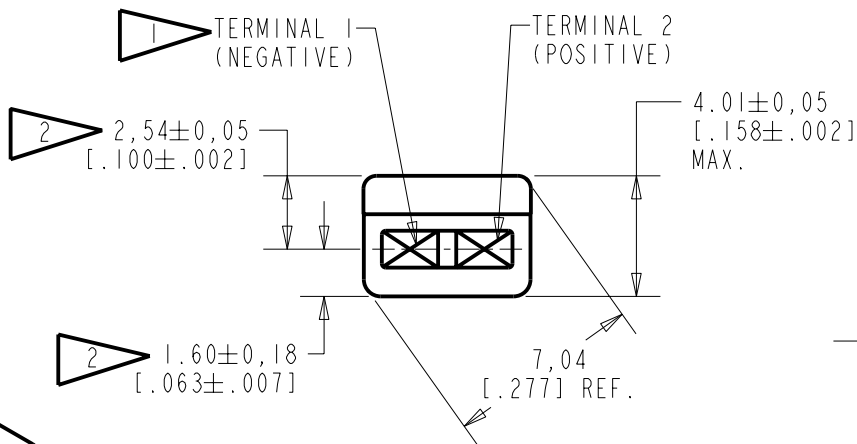


BJ-28471-000
SHT 1.1



NOTES:

- 1 A DECREASE IN PRESSURE AT THE SOUND INLET WILL CAUSE A POSITIVE VOLTAGE AT TERMINAL 2 RELATIVE TO TERMINAL 1.
- 2 LOCATED FROM TWO SURFACES FOR CUSTOMER CONVENIENCE. ONLY APPLICABLE FROM ONE SURFACE, NOT TO BE USED TOGETHER.



SCALE 2:1
NOMINAL WEIGHT
.66 GRAM

DIMENSIONS IN MILLIMETERS [INCHES]

| Revision | C.O. # | Implementation Date | RELEASE LEVEL | REVISION |
|----------|-----------|---------------------|---------------|----------|
| A | CI0103470 | 12-9-05 | Released | A |

| | | | |
|----------------------|--|---------|---------|
| SCALE: 4:1 | | DR. BY | DATE |
| DO NOT SCALE DRAWING | | CRG | 12-9-05 |
| TITLE: MICROPHONE | | CK. BY | DATE |
| OUTLINE DRAWING | | GJP | 1-5-06 |
| BJ-28471-000 | | APP. BY | DATE |
| SHT 1.1 | | GJP | 1-5-06 |

KNOWLES ELECTRONICS
ITASCA, ILLINOIS U.S.A.

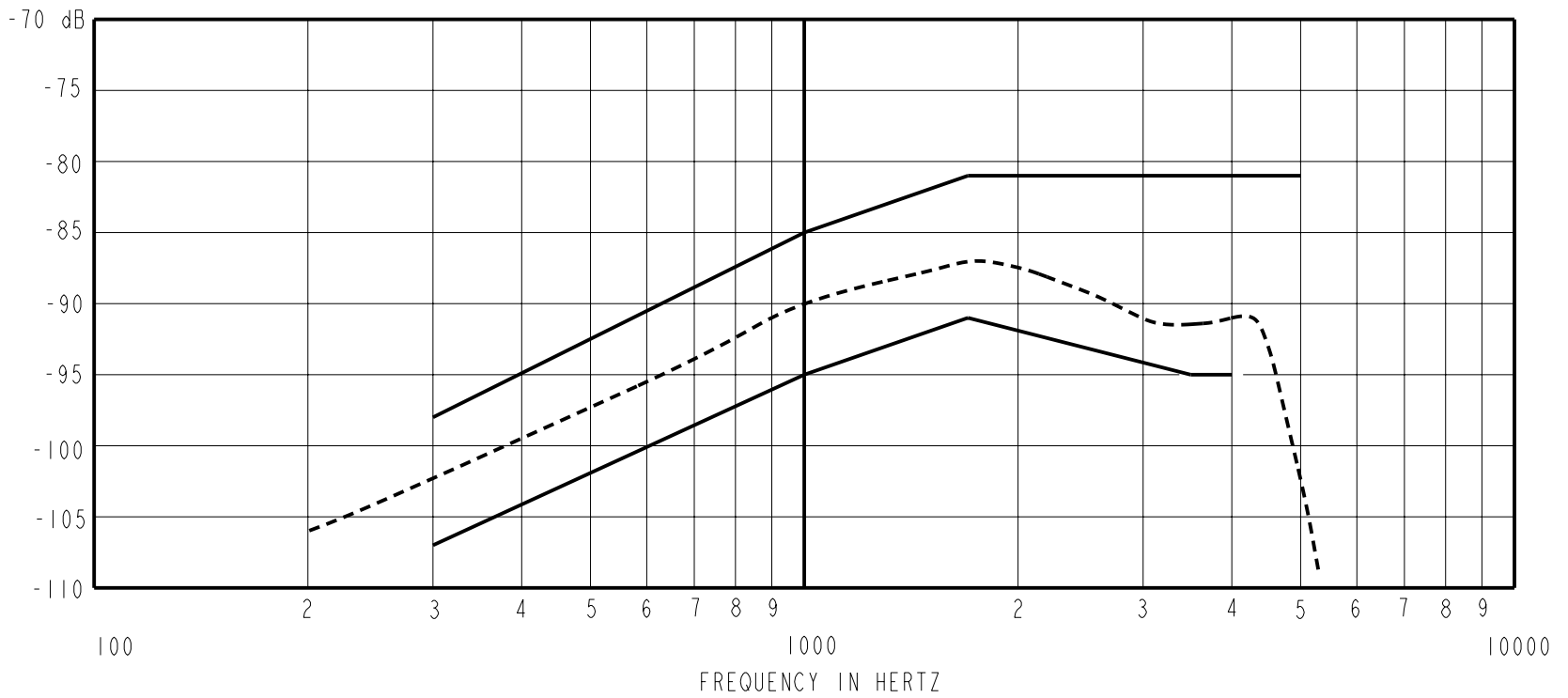
WHEN TEST LIMITS ARE USED TO ESTABLISH INCOMING INSPECTION ACCEPTANCE/REJECTION CRITERIA, CORRELATION OF TEST EQUIPMENT WITH KNOWLES IS ALSO REQUIRED FOR ELIMINATION OF EQUIPMENT AND TEST METHOD VARIATIONS.

NO DAMPING

BJ-28471-000

SHEET 2.1

SENSITIVITY IN dB RELATIVE TO 1.0 VOLT/0.1 Pa (N/M²)
FOR CONDITIONS SHOWN BELOW.



NOTES: SENSITIVITY DEVICE CONFORMITY
FREQUENCY MIN. NOM. MAX. RANGE OF DEVIATION FROM 1KHz

- LOAD RESISTANCE FOR SENSITIVITY MEASUREMENT: 150 OHMS
- OUTPUT IMPEDANCE AT 1kHz: 150 OHMS NOMINAL
- NOMINAL DC RESISTANCE AT 20°C: 34.5 OHMS
- TESTED WITH REAR PORT OPEN TO LARGE SOUND FREE VOLUME
-

| <u>SENSITIVITY</u> | | |
|--------------------|-------------|-------------|
| <u>FREQUENCY</u> | <u>MIN.</u> | <u>MAX.</u> |
| 300 | -107.0 | -97.0 |
| 1000 | -95.0 | -85.0 |
| 1700 | -91.0 | -81.0 |
| 3500 | -95.0 | --- |
| 4000 | -95.0 | --- |
| 5000 | --- | -81.0 |

- FOR EQUAL SPL APPLIED TO FRONT AND REAR PORTS IN PHASE AT 1000 Hz THE SENSITIVITY WILL REDUCE BY AT LEAST 10 dB.
- FRONT PORT LOCATION: 0N
REAR PORT LOCATION: 12N

| Revision | C.O. # | Implementation Date | RELEASE LEVEL | REVISION |
|----------|-----------|---------------------|---------------|----------|
| | | | Released | A |
| A | C10103470 | 12-9-05 | | |

KNOWLES ELECTRONICS
ITASCA, ILLINOIS U.S.A.

WHEN TEST LIMITS ARE USED TO ESTABLISH INCOMING INSPECTION ACCEPTANCE/REJECTION CRITERIA, CORRELATION OF TEST EQUIPMENT WITH KNOWLES IS ALSO REQUIRED FOR ELIMINATION OF EQUIPMENT AND TEST METHOD VARIATION

TITLE: **MICROPHONE** **BJ-28471-000**
PERFORMANCE SPECIFICATION **SHT 2.1**

| DR. BY | DATE |
|---------|---------|
| CRG | 12-9-05 |
| CK. BY | DATE |
| GJP | 1-5-06 |
| APP. BY | DATE |
| GJP | 1-5-06 |