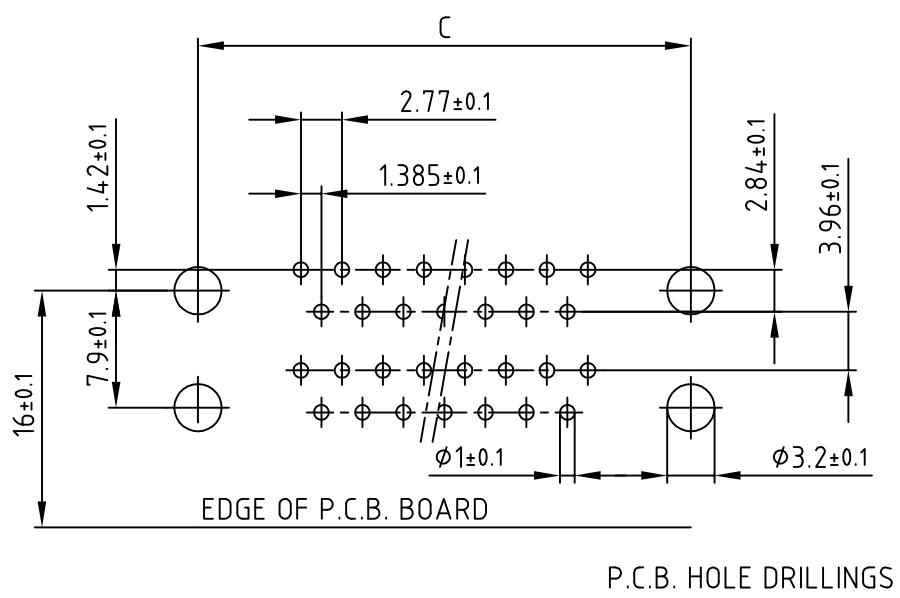
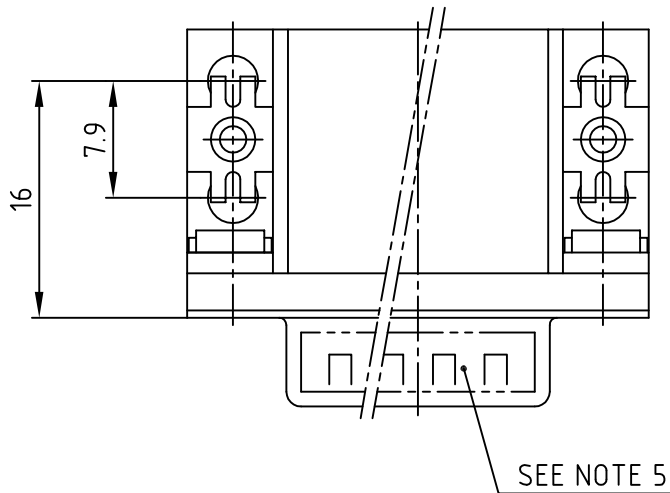
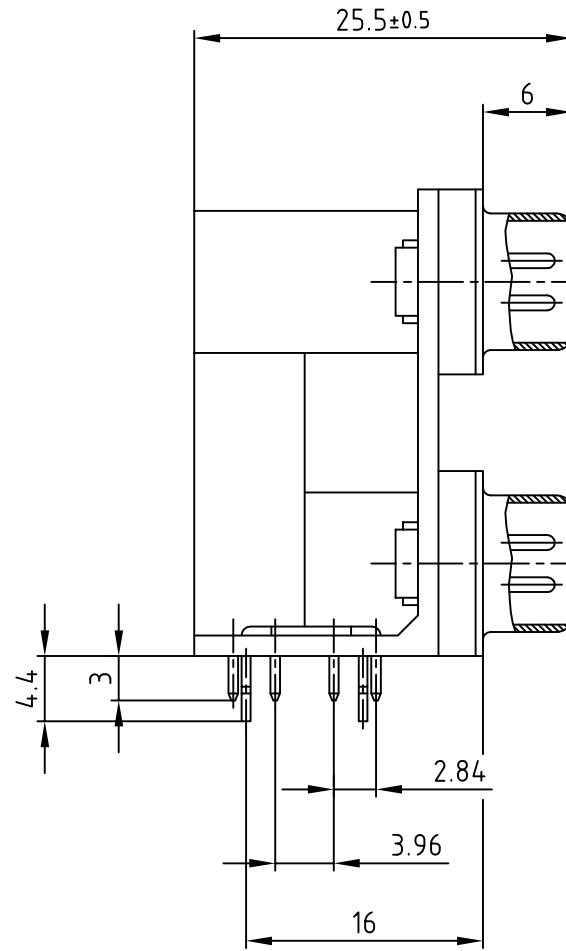
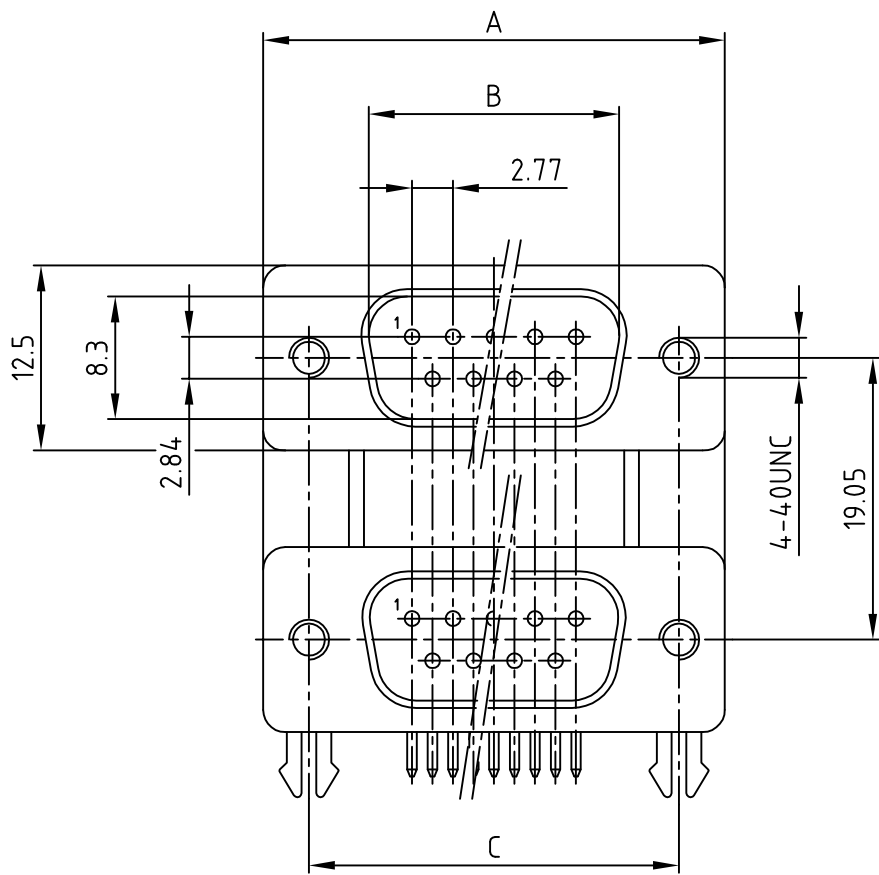


used for: D-SUB DUAL-PORT



No. of pos.	A	B	C	Part-NO.
2x 9	30.80	16.92	25.00	DLS1PP5AN23X
2x15	39.20	25.25	33.30	DLS2PP5AN23X
2x25	53.10	38.96	47.10	DLS3PP5AN23X
2x37	69.40	55.42	63.50	DLS4PP5AN23X

NOTES:

- METALSHELLS: STEEL; min. 320µ" TIN
- INSULATORS: PBT GF UL 94 V-0, BLACK
- CONTACTS: COPPER ALLOY  
PLATING: 8µ" HARD GOLD OVER min. 50µ" NICKEL
- MAXIMUM TORQUE VALUE FOR THREAD: 6" LBS
- CONNECTOR IS PART MARKED: PART-NO. CONEC Y/WW
- = CRITICAL DIMENSION

Directive 2002/95/EC RoHS compliant

APPROVAL # FREIGABE # DEBLOCAGE # AUTOR/ZACION # APPROVAL	
CUSTOMER APPROVAL DATE:	
NAME:	TITLE:
COMPANY NAME:	
APPROVAL # FREIGABE # DEBLOCAGE # AUTOR/ZACION # APPROVAL	

THIS DRAWING MAY NOT BE COPIED OR REPRODUCED IN ANY WAY, AND MAY NOT BE PASSED ON TO A THIRD PARTY WITHOUT WRITTEN PERMISSION. OWNERSHIP AND COPYRIGHT OF CONEC GmbH DO NOT ALTER CAD DRAWING BY HAND		
rev.	description	date name

tolerance		dim. in mm	scale: 2:1
			material: SEE NOTES
2003	date	name	title: <b>D-SUB DUAL-PORT</b> MALE / MALE 2x9pos. - 2x37pos. with 4-40 insert
drawn	12.03.	Parei	
appd.	12.03.	Kühle	
norm			
d-old			dwg no: AutoCAD 2000
<b>CONEC</b> <sup>®</sup>			DIN-A 3
			sh: 1/1
			part no: SEE TABLE