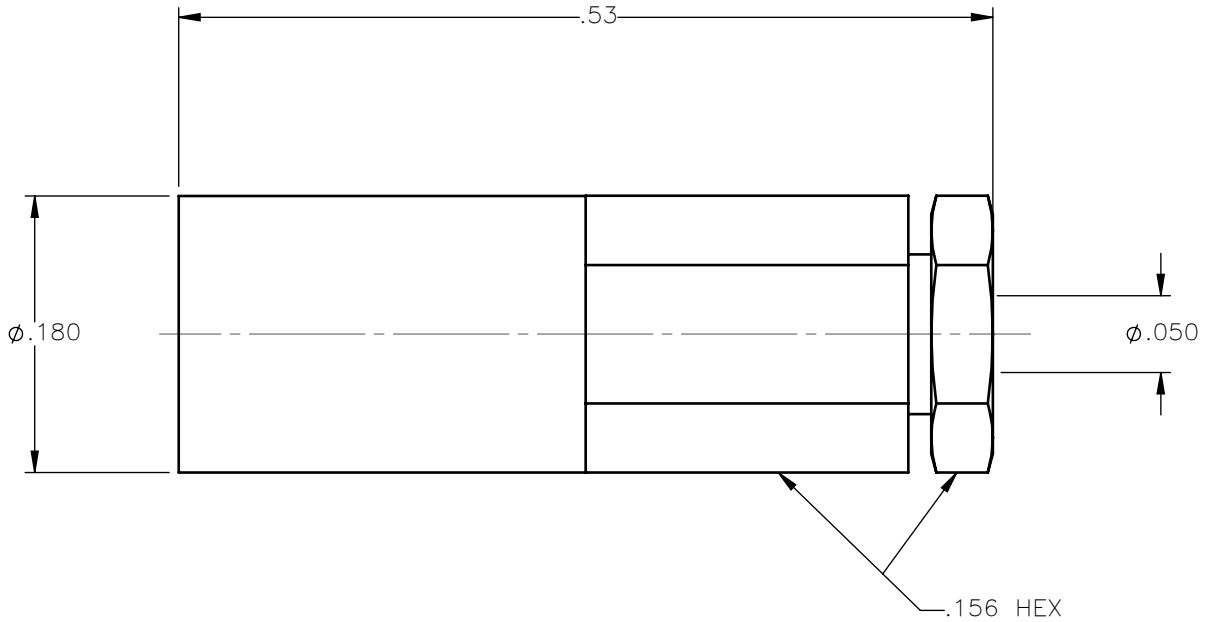
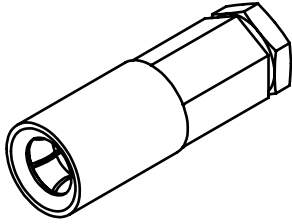


REVISIONS			
REV.	DESCRIPTION	DATE	APPROVED
A	INITIAL RELEASE	02/18/15	N.D.





NOTES:

MATERIALS:

1. BODY & CONTACT = BERYLLIUM COPPER PER ASTM B196, ALLOY C17300, TEMPER TD04.
2. INSULATORS = VIRGIN WHITE TEFLON PER ASTM D1710, GRADE 1, TYPE I, CLASS "B".
3. SLEEVE & BACK NUT = BRASS PER ASTM B16, ALLOY C36000, TEMPER H02.

FINISHES:

1. CONTACT = GOLD PLATE PER ASTM B488-01, TYPE II, 50µin MIN, GRADE C, OVER 100 TO 200µin STRESS FREE SULFAMATE NICKEL PER QQ-N-290.
2. ALL OTHER METAL PARTS = GOLD PLATE PER ASTM B488-01, TYPE II, 30µin MIN, GRADE C OVER 100 TO 200µin COPPER STRIKE PER MIL-C-14550.

UNLESS OTHERWISE SPECIFIED DIMENSIONS ARE IN INCHES TOLERANCES ON	DWN: N.D.	DATE: 02/18/15	 Property of Radiall This document cannot be reproduced or communicated to a third party without prior written permission of RADIALL.		
	CHKD: D.N.	DATE: 02/18/15			
DECIMAL	ANGLE	APVD: J.M.	DATE: 02/18/15	SSMB STRAIGHT PLUG SOLDER TYPE FOR .047 S/R AND SIMILAR CABLES	
REFERENCE:	MATERIALS AND FINISHES:	SEE NOTES			
ORIGINATED: N.D. DATE: 02/18/15		SIZE: A	FSCM NO.: 19505	DWG NO.: 7202-1542-011	REV: A
		SCALE: 8:1	THIRD ANGLE PROJECTION		SHEET 1 OF 1

7202-1542-011