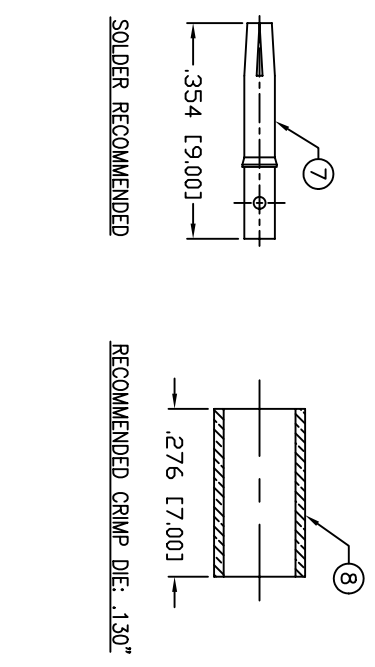
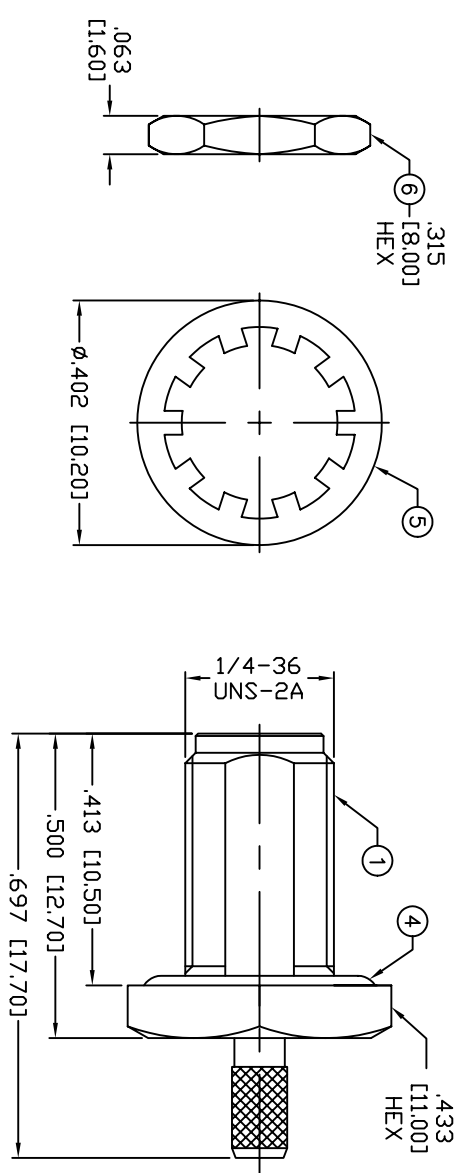


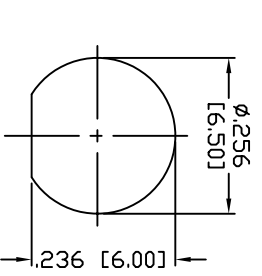
THIS DRAWING CONTAINS INFORMATION PROPRIETARY TO RF INDUSTRIES.  
 ANY UNAUTHORIZED USE OF THIS DRAWING IS EXPRESSLY PROHIBITED  
 WITHOUT WRITTEN PERMISSION FROM RF INDUSTRIES.  
 ANY VIOLATION IS PUNISHABLE UNDER U.S. COPYRIGHT LAWS.

ALL DIMENSIONS ARE REFERENCE ONLY

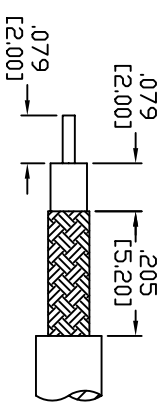


**SPECIFICATIONS:**

IMPEDANCE: 50 Ohms  
 FREQUENCY RANGE: 0-12.4 GHz  
 INSERTION LOSS(DB):  $0.06 \times \sqrt{f(\text{GHz})}$   
 VSWR: 1.3 MAX.  
 WORKING VOLTAGE: 375 V rms Max. @ Sea Level (RG-316)  
 INSULATION RESISTANCE: 5k M Ohms min.  
 TEMPERATURE RANGE: -65°C TO 85°C  
 FOR RG-174, 188, 188A, 316/U, ALPHA 9174, 9316,  
 BELDEN 8216, 83269, 83284, 84316 & TIMES LMR-100A CABLE



RECOMMENDED MOUNTING HOLE




RECOMMENDED STRIPPING DIMENSIONS

UNLESS OTHERWISE SPECIFIED:

#	DESCRIPTION	QTY	MATERIAL	FINISH	APPROVALS	DATE
1	BODY	1	BRASS	NICKEL, 100μ"		
2	INSULATOR	1	PTFE	---	008974	
3	RING	1	BRASS	NICKEL, 100μ"		
4	GASKET	1	SILICONE	---		
5	LOCK WASHER	1	BRASS	NICKEL, 100μ"		
6	HEX NUT	1	BRASS	NICKEL, 100μ"		
7	CONTACT	1	Be. Cu.	GOLD, 50μ"		
8	FERRULE	1	COPPER	NICKEL, 100μ"		
9						
10						
11						
12						
13						
14						

DIMENSIONS ARE IN INCHES AND [MILLIMETERS]  
 UNLESS OTHERWISE NOTED TOLERANCES ARE:  
 DECIMALS DIAMETER



**SMA JACK, CRIMP**

BULKHEAD

SIZE	CABLE GROUP	DWG NO.	REV
A	B	RSA-3252-B-03	D

SCALE: NTS      CAD FILE: OUTLINE      SHEET 1 OF 1

7610 MIRAMAR RD  
 SAN DIEGO, CA 92126  
 (858) 549-6340  
 (858) 549-6345 FAX

REV	DESCRIPTION	DWN	DATE	APPROVED
A	ENGINEERING RELEASE	KM	3/5/97	R. RICE
B	REGENERATE DWG. & UPDATE SPECS	GGG	5/13/02	JDMc
C	CHANGE HEX SIZE TO 11mm	CZS	2/04/03	JDMc
D	UPDATE CONNECTOR'S DESIGN & DIMENSIONS	CZS	2/26/99	JDMc

PART NO. **RSA-3252-B-03**