

TABLE 1					
EDGE MOUNT THICKNESS	"A"	"B"	"C"	BODY	CONTACT
-EM2	.130[3.30]	.0670[1.702]	.058[1.47]	BTE-XXX-01-D-EM2	T-1S42-01-X
*-EM3	.160[4.06]	.0980[2.489]	.088[2.24]	BTE-XXX-01-D-EM3	T-1S42-02-X

\* = SEE NOTE 9

BTE-XXX-XX-X-D-EMX-XX

No OF POSITIONS  
-020, -040, -060, -080, -100, -120 (PER ROW)

OPTION  
-GP: GUIDE POST (60 POS MAX) (USE BTE-XXX-01-D-EM2-GP) [SEE SHEET 2, FIG. 2-A AVAILABLE ONLY ON -EM2]

LEAD STYLE  
-01 .160 [4.06]

EDGE MOUNT THICKNESS  
-EM2: .064[1.63] ±.004 PCB (USE BTE-XXX-01-D-EM2 & T-1S42-01-X)  
-EM3: (USE BTE-XXX-01-D-EM3 & T-1S42-02-X) **SEE NOTE 9**

ROW SPECIFICATION  
-D: DOUBLE (USE BTE-XXX-01-D-EMX)

PLATING SPECIFICATION  
-F: FLASH SELECTIVE GOLD WITH MATTE TIN TAILS (USE T-1S42-XX-F) (SEE NOTE 7)  
-L: LIGHT SELECTIVE GOLD WITH MATTE TIN TAILS (USE T-1S42-XX-L)  
-H: HEAVY GOLD (USE T-1S42-XX-H)

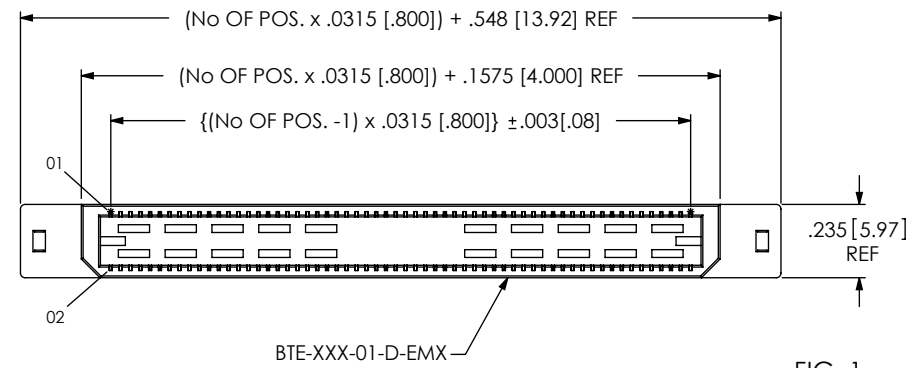


FIG. 1  
BTE-060-01-X-D-EM2 SHOWN

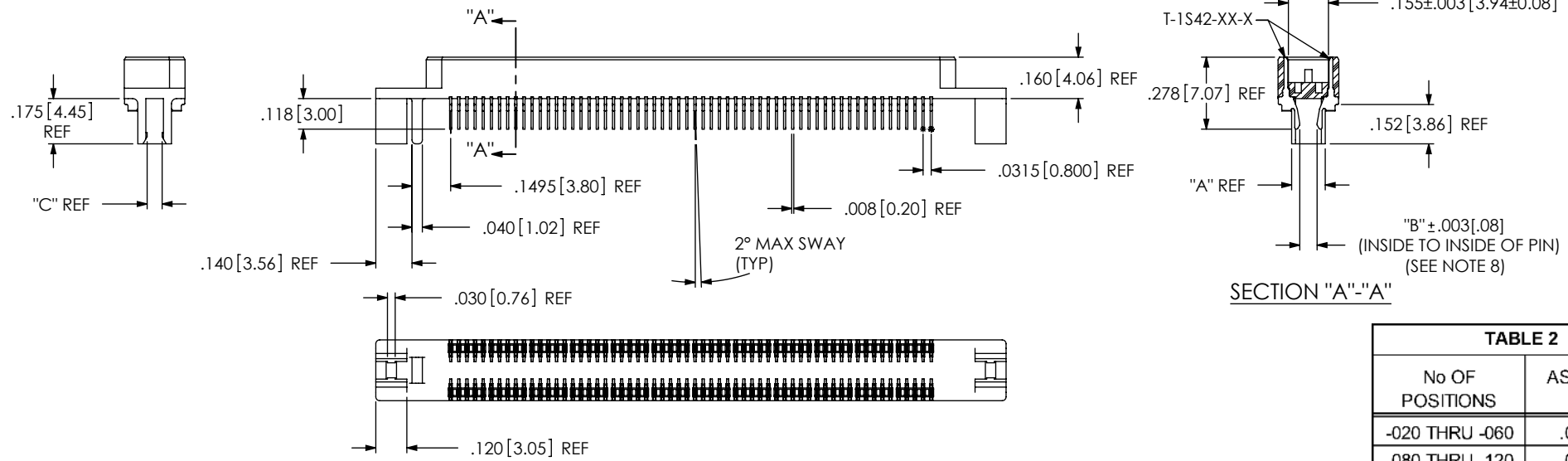
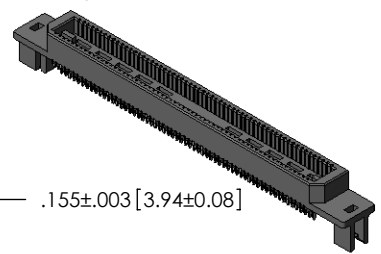
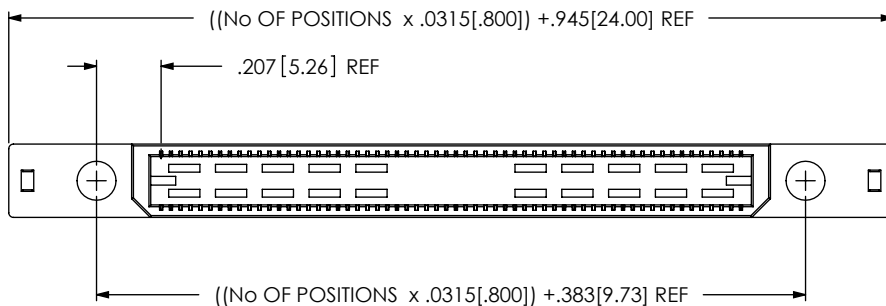


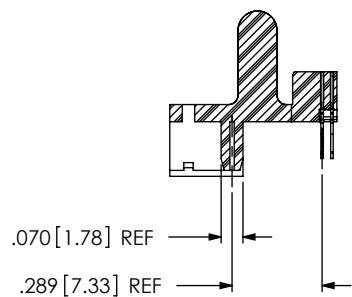
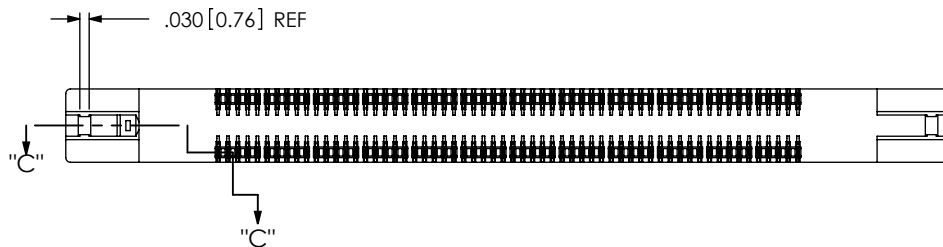
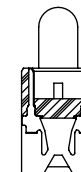
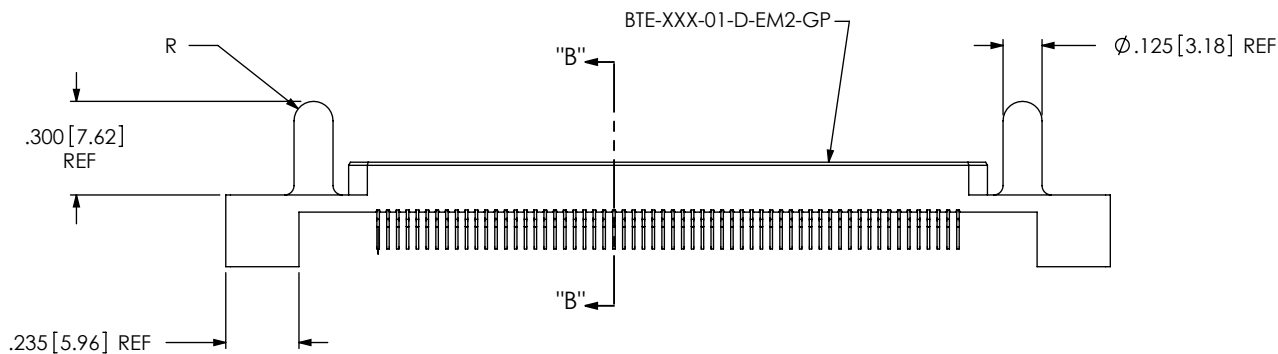
TABLE 2	
No OF POSITIONS	ASSEMBLY BOW
-020 THRU -060	.004 [.10]
-080 THRU -120	.005 [.13]

- NOTES:
1. Ⓢ REPRESENTS A CRITICAL DIMENSION.
  2. BURR ALLOWANCE: .0015 [.038] MAX.
  3. MINIMUM TERMINAL RETENTION: 6 OZ.
  4. PARTS TO BE MOLD-TO-POSITION.
  5. NOTE DELETED.
  6. BOARD THICKNESS TO BE MEASURED FROM SOLDER PAD TO SOLDER PAD.
  7. -L PLATING MAY BE SUBSTITUTED FOR -F PLATING.
  8. MAX VARIENCE: .002 [.05]
  9. -EM3 IS NOT A STANDARD OFFERING; AVAILABLE AS AN ASP ONLY. PLEASE CONTACT SAMTEC INTERCONNECT PROCESSING GROUP WITH ORDER INQUIRIES.
  10. NOTE DELETED.

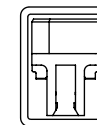
<p>UNLESS OTHERWISE SPECIFIED, DIMENSIONS ARE IN INCHES. TOLERANCES ARE:</p> <table border="0"> <tr> <td>DECIMALS</td> <td>ANGLES</td> </tr> <tr> <td>.XX: ±.01 [.3]</td> <td>2°</td> </tr> <tr> <td>.XXX: ±.005 [.13]</td> <td></td> </tr> <tr> <td>.XXXX: ±.0020 [.051]</td> <td></td> </tr> </table>	DECIMALS	ANGLES	.XX: ±.01 [.3]	2°	.XXX: ±.005 [.13]		.XXXX: ±.0020 [.051]		<p>PROPRIETARY NOTE THIS DOCUMENT CONTAINS INFORMATION CONFIDENTIAL AND PROPRIETARY TO SAMTEC, INC. AND SHALL NOT BE REPRODUCED OR TRANSFERRED TO OTHER DOCUMENTS OR DISCLOSED TO OTHERS OR USED FOR ANY PURPOSE OTHER THAN THAT WHICH IT WAS OBTAINED WITHOUT THE EXPRESSED WRITTEN CONSENT OF SAMTEC, INC.</p>		
	DECIMALS	ANGLES									
.XX: ±.01 [.3]	2°										
.XXX: ±.005 [.13]											
.XXXX: ±.0020 [.051]											
<p>MATERIAL: DO NOT SCALE DRAWING SHEET SCALE: 1.625:1</p> <p>INSULATOR: BLACK LCP TERMINAL: PHOS BRONZE</p>	<p>DESCRIPTION: .8mm TERMINAL ASSEMBLY, EDGEMOUNT</p> <p>DWG. NO. BTE-XXX-XX-X-D-EMX-XX</p> <p>BY: KEVIN B 2/18/00 SHEET 1 OF 2</p>										



**FIG 2**  
 -GP OPTION (60 POS MAX)  
 BTE-060-01-X-D-EM2-GP SHOWN  
 [DIFFERENT AS SHOWN, OTHERWISE SAME AS FIG 1]

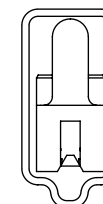


**PACKAGING VIEW**  
 [PARTS TO HAVE POSITION #1 LOADED IN SAME DIRECTION AS ARROW ON TUBE]



**-EM2**

TUBE: PT-1-24-01-95  
 PLUG: TP-03



**-EM2-GP**

TUBE: PT-1-24-02-09  
 PLUG: TP-07

**PROPRIETARY NOTE**

THIS DOCUMENT CONTAINS INFORMATION CONFIDENTIAL AND PROPRIETARY TO SAMTEC, INC. AND SHALL NOT BE REPRODUCED OR TRANSFERRED TO OTHER DOCUMENTS OR DISCLOSED TO OTHERS OR USED FOR ANY PURPOSE OTHER THAN THAT WHICH IT WAS OBTAINED WITHOUT THE EXPRESSED WRITTEN CONSENT OF SAMTEC, INC.

DO NOT SCALE DRAWING

SHEET SCALE: 1.625:1



520 PARK EAST BLVD, NEW ALBANY, IN 47150  
 PHONE: 812-944-6733 FAX: 812-948-5047  
 e-Mail: info@SAMTEC.com code: 55322

DESCRIPTION:  
 .8mm TERMINAL ASSEMBLY, EDGEMOUNT

DWG. NO. **BTE-XXX-XX-X-D-EMX-XX**

BY: KEVIN B 2/18/00

SHEET 2 OF 2