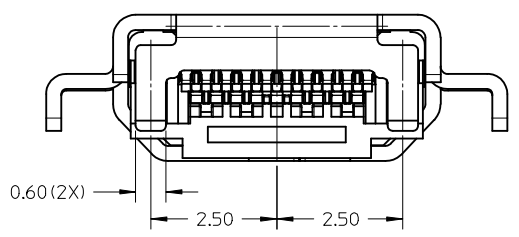


- NOTES:
- MATERIALS:
    - HOUSING: LCP, 30% GLASS FILLED, UL 94V-0
    - TERMINALS: COPPER ALLOY
    - SHIELD: STAINLESS STEEL
  - FINISHES:
    - TERMINALS: GOLD ON CONTACT AREA (Refer Table) AND 0.05µm MIN GOLD FLASH ON SOLDER TAILS ALL OVER 2.0µm MIN NICKEL UNDERPLATE
    - SHIELD: 2.0µm MIN MATTE TIN OVER 1.27µm MIN NICKEL
  - PRODUCT SPECIFICATION: PS-46765-001
  - PACKAGING SPECIFICATION: TAPE AND REEL
  - SEE SHEET 2 OF 2 FOR RECOMMENDED PCB LAYOUT
  - TERMINAL SOLDER TAIL COPLANARITY 0.08MAX
  - INSERTION FORCE: 44.1N MAX  
WITHDRAWAL FORCE: 5N MIN AND 25N MAX

MOUNTING TYPE	Contact: 0.76µm Gold Min	Contact: 0.38µm Gold Min
ASSEMBLY	78592-0001	78592-0301



REDRAWN	EC NO: S2013-0058	2012/07/27	QUALITY SYMBOLS
	DRWN: CWANG25	2012/07/27	$\nabla_A = 0$
	CHKD: JESSIECHUA	2012/07/27	$\nabla_C = 0$
	APPR: SHONG	2012/07/30	$\nabla_B = 0$
A1	REV	DESCRIPTION	

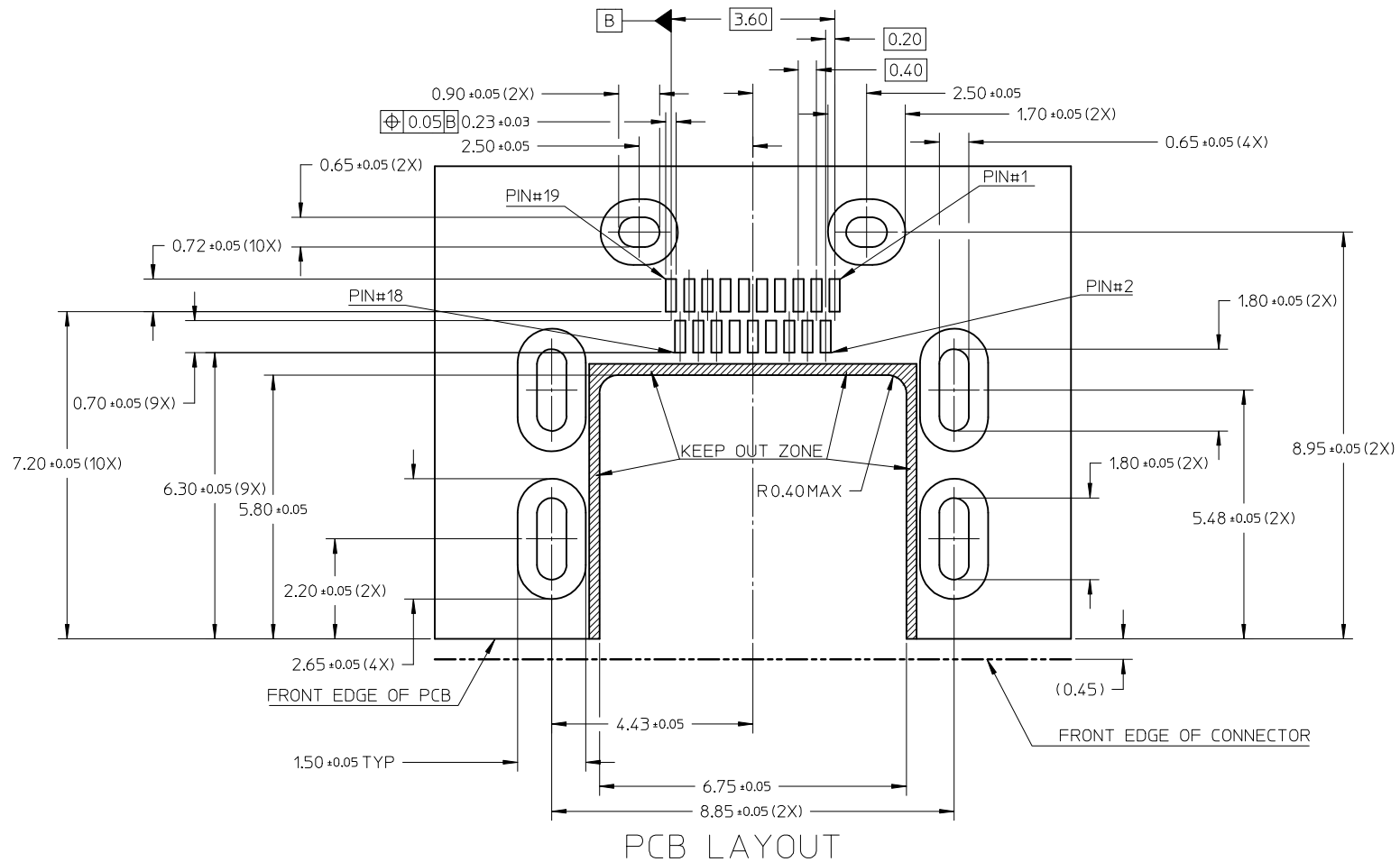
GENERAL TOLERANCES (UNLESS SPECIFIED)	mm	INCH
	4 PLACES ± ---	± ---
	3 PLACES ± ---	± ---
	2 PLACES ± 0.15	± ---
	1 PLACE ± ---	± ---
	ANGULAR ± 1°	
DRAFT WHERE APPLICABLE MUST REMAIN WITHIN DIMENSIONS		

DIMENSION STYLE		SCALE	DESIGN UNITS	THIRD ANGLE PROJECTION
MM ONLY		NTS	METRIC	
DRAWN BY	DATE	TITLE		
CWANG25	2011/07/19	MICRO HDMI-D, RECEPTACLE		
CHECKED BY	DATE	0.4 PITCH, OFFSET MIDMNT		
JESSIECHUA	2011/07/19	6-LEG THRUHOLE		
APPROVED BY	DATE	MOLEX INCORPORATED		
NAGESHKN	2011/07/25	MOLEX INCORPORATED		
MATERIAL NO.	DOCUMENT NO.	SHEET NO.		
SEE TABLE	SD-78592-001	1 OF 2		
SIZE	THIS DRAWING CONTAINS INFORMATION THAT IS PROPRIETARY TO MOLEX INCORPORATED AND SHOULD NOT BE USED WITHOUT WRITTEN PERMISSION			
A3				

10 9 8 7 6 5 4 3 2 1

PIN	SIGNAL ASSIGNMENT
1	Hot Plug Detect
2	Utility
3	TMDS Data2+
4	TMDS Data2 Shield
5	TMDS Data2-
6	TMDS Data1+
7	TMDS Data1 Shield
8	TMDS Data1-
9	TMDS Data0+
10	TMDS Data0 Shield
11	TMDS Data0-
12	TMDS Clock+
13	TMDS Clock Shield
14	TMDS Clock-
15	CEC
16	DDC/CEC Ground
17	SCL
18	SDA
19	+5V Power

CONNECTION	SIGNALS
FIRST MAKE	CONNECTOR SHELL
SECOND MAKE	PINS 1 - 18
THIRD MAKE	PIN 19 (+5V POWER)



PCB LAYOUT

<b>REDRAWN</b> EC NO: S2013-0058 DRWN: CWANG25 2012/07/27 CHKD: JESSIECHUA 2012/07/27 APPR: SHONG 2012/07/30	QUALITY SYMBOLS	GENERAL TOLERANCES (UNLESS SPECIFIED)	DIMENSION STYLE	SCALE	DESIGN UNITS	THIRD ANGLE PROJECTION															
	$F_A=0$ $F_G=0$ $F_P=0$	<table border="1"> <thead> <tr> <th></th> <th>mm</th> <th>INCH</th> </tr> </thead> <tbody> <tr> <td>4 PLACES</td> <td>± ---</td> <td>± ---</td> </tr> <tr> <td>3 PLACES</td> <td>± ---</td> <td>± ---</td> </tr> <tr> <td>2 PLACES</td> <td>± 0.15</td> <td>± ---</td> </tr> <tr> <td>1 PLACE</td> <td>± ---</td> <td>± ---</td> </tr> </tbody> </table>		mm	INCH	4 PLACES	± ---	± ---	3 PLACES	± ---	± ---	2 PLACES	± 0.15	± ---	1 PLACE	± ---	± ---	MM ONLY	NTS	METRIC	
		mm	INCH																		
	4 PLACES	± ---	± ---																		
3 PLACES	± ---	± ---																			
2 PLACES	± 0.15	± ---																			
1 PLACE	± ---	± ---																			
DESCRIPTION	ANGULAR ± 1 °	DRAWN BY	DATE	TITLE																	
REV	DRAFT WHERE APPLICABLE MUST REMAIN WITHIN DIMENSIONS	CWANG25	2011/07/19	MICRO HDMI-D, RECEPTACLE 0.4 PITCH, OFFSET MIDMNT 6-LEG THRUHOLE																	
A1		CHECKED BY	DATE	MOLEX INCORPORATED																	
		JESSIECHUA	2011/07/19	DOCUMENT NO.																	
		APPROVED BY	DATE	SD-78592-001																	
		NAGESHKN	2011/07/25	SHEET NO.																	
		MATERIAL NO.		2 OF 2																	
		SEE TABLE		THIS DRAWING CONTAINS INFORMATION THAT IS PROPRIETARY TO MOLEX INCORPORATED AND SHOULD NOT BE USED WITHOUT WRITTEN PERMISSION																	

9 8 7 6 5 4 3 2 1