

**EM2205 Series**

**EuroMag Terminal Blocks**

45° Angle, 5.00 Centers, Modular

**SPECIFICATIONS**

**Rating:** 10A, 300V

**Center Spacing:** 0.197" (5.00mm)

**Wire Range:** #12-24 AWG

**Housing Material:** Grey Polyamide Type 6/6, 94V0

**Contact Material:** Brass Tin-Plated

**Cage Material:** Brass, Tin-Plated

**Screw Size:** M2.6 Zinc-Plated Steel

**Operating Temperature:** 105°C (221°F) max., -33°C (-27°F) min.

**Torque Rating:** 3.5 lb-in.

**Recommended PCB Hole Diameters:** 0.055" (1.40mm)

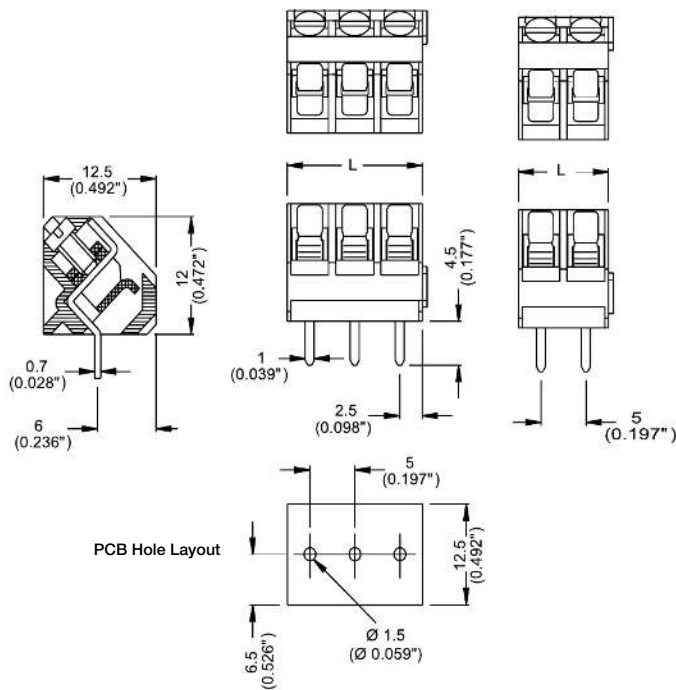
**Construction:** Modular design features dovetails for interlocking to achieve longer lengths

**Agency Information:** File E62622; CE Certified



EM220505

**Dimensions - mm (in)**



Poles	L (mm)	Poles	L (mm)
2	10.0	14	70.0
3	15.0	15	75.0
4	20.0	16	80.0
5	25.0	17	85.0
6	30.0	18	90.0
7	35.0	19	95.0
8	40.0	20	100.0
9	45.0	21	105.0
10	50.0	22	110.0
11	55.0	23	115.0
12	60.0	24	120.0
13	65.0		

To convert to inches, divide by 25.4

**Part Numbering System**

Series

# of Poles

**EM2205**

02 to 24

Terminal Blocks:  
Single Row

EuroMag Series  
Cage & Screw

Edge Connectors,  
One-Sided Boards

Compliance  
References