

TABLE-1: WITH CONDUCTIVE LOSSY OPTION						
PART NUMBER	DESCRIPTION	N	A	B	C	D
IC13423-X11Z	VERTICAL PLUG ASSEMBLY, 12 POSITION, REGULAR, CONDUCTIVE LOSSY	12	14.17	19.47	21.97	10.80
IC13423-X13Z	VERTICAL PLUG ASSEMBLY, 12 POSITION, SHORT, CONDUCTIVE LOSSY	12	12.37	13.97	N/A	10.80
IC13423-X21Z	VERTICAL PLUG ASSEMBLY, 20 POSITION, REGULAR, CONDUCTIVE LOSSY	20	21.37	26.67	29.17	14.40
IC13423-X23Z	VERTICAL PLUG ASSEMBLY, 20 POSITION, SHORT, CONDUCTIVE LOSSY	20	19.57	21.17	N/A	14.40
IC13423-X41Z	VERTICAL PLUG ASSEMBLY, 40 POSITION, REGULAR, CONDUCTIVE LOSSY	40	39.37	44.67	47.17	32.40
IC13423-X43Z	VERTICAL PLUG ASSEMBLY, 40 POSITION, SHORT, CONDUCTIVE LOSSY	40	37.57	39.17	N/A	32.40
IC13423-X61Z	VERTICAL PLUG ASSEMBLY, 60 POSITION, REGULAR, CONDUCTIVE LOSSY	60	57.37	62.67	65.17	50.40
IC13423-X63Z	VERTICAL PLUG ASSEMBLY, 60 POSITION, SHORT, CONDUCTIVE LOSSY	60	55.57	57.17	N/A	50.40
IC13423-X81Z	VERTICAL PLUG ASSEMBLY, 80 POSITION, REGULAR, CONDUCTIVE LOSSY	80	75.37	80.67	83.17	68.40
IC13423-X83Z	VERTICAL PLUG ASSEMBLY, 80 POSITION, SHORT, CONDUCTIVE LOSSY	80	73.57	75.17	N/A	68.40

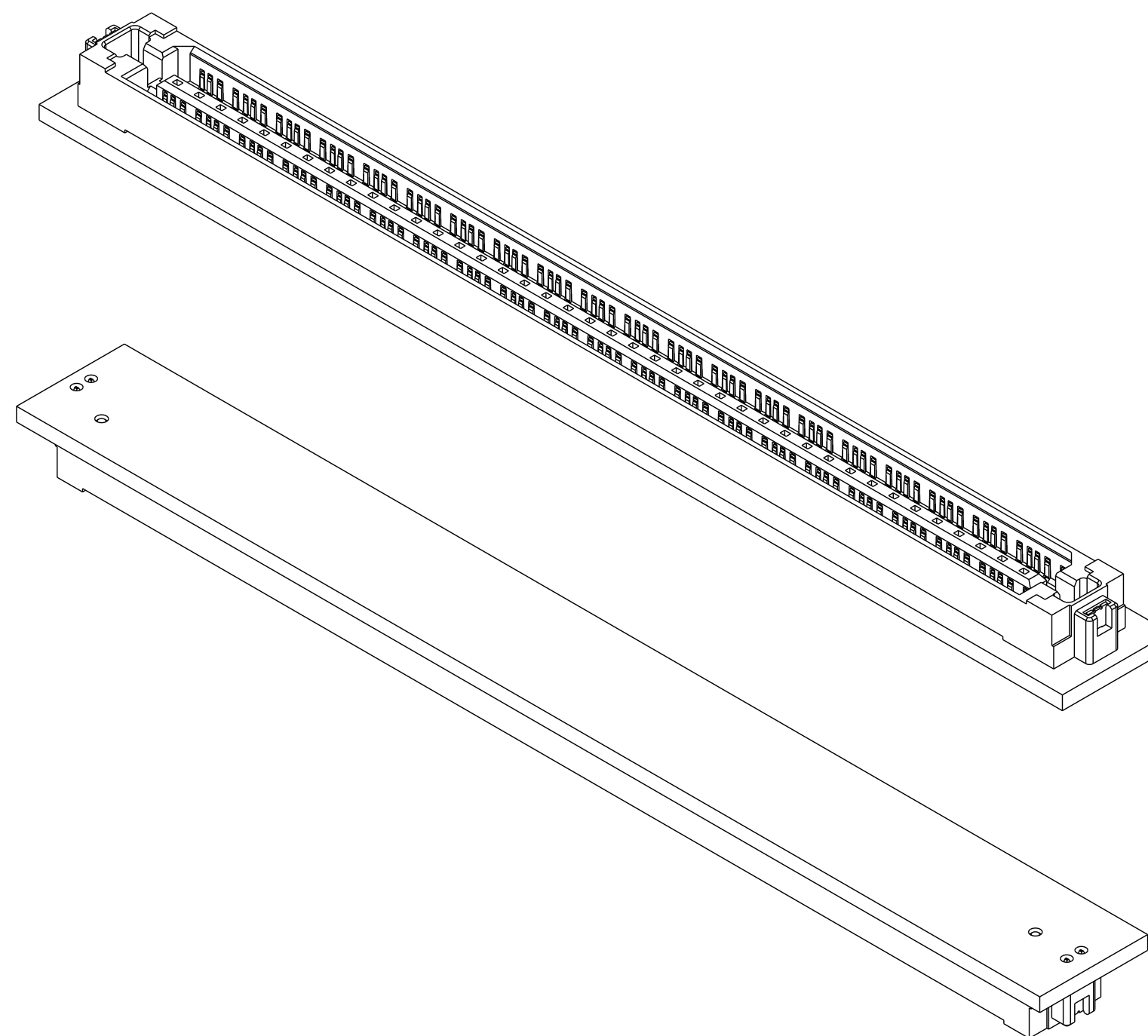
TABLE-2: WITH NON-CONDUCTIVE LOSSY OPTION						
PART NUMBER	DESCRIPTION	N	A	B	C	D
IC13423-X12Z	VERTICAL PLUG ASSEMBLY, 12 POSITION, REGULAR, NON-COND. LOSSY	12	14.17	19.47	21.97	10.80
IC13423-X14Z	VERTICAL PLUG ASSEMBLY, 12 POSITION, SHORT, NON-COND. LOSSY	12	12.37	13.97	N/A	10.80
IC13423-X22Z	VERTICAL PLUG ASSEMBLY, 20 POSITION, REGULAR, NON-COND. LOSSY	20	21.37	26.67	29.17	14.40
IC13423-X24Z	VERTICAL PLUG ASSEMBLY, 20 POSITION, SHORT, NON-COND. LOSSY	20	19.57	21.17	N/A	14.40
IC13423-X42Z	VERTICAL PLUG ASSEMBLY, 40 POSITION, REGULAR, NON-COND. LOSSY	40	39.37	44.67	47.17	32.40
IC13423-X44Z	VERTICAL PLUG ASSEMBLY, 40 POSITION, SHORT, NON-COND. LOSSY	40	37.57	39.17	N/A	32.40
IC13423-X62Z	VERTICAL PLUG ASSEMBLY, 60 POSITION, REGULAR, NON-COND. LOSSY	60	57.37	62.67	65.17	50.40
IC13423-X64Z	VERTICAL PLUG ASSEMBLY, 60 POSITION, SHORT, NON-COND. LOSSY	60	55.57	57.17	N/A	50.40
IC13423-X82Z	VERTICAL PLUG ASSEMBLY, 80 POSITION, REGULAR, NON-COND. LOSSY	80	75.37	80.67	83.17	68.40
IC13423-X84Z	VERTICAL PLUG ASSEMBLY, 80 POSITION, SHORT, NON-COND. LOSSY	80	73.57	75.17	N/A	68.40

TABLE-3: PART HEIGHT		
PART NUMBER	STACKED HEIGHT	H. PLUG HEIGHT
IC13423-AXXZ	4mm	3.78
IC13423-BXXZ	5mm	4.78
IC13423-CXXZ	6mm	5.78
IC13423-DXXZ	7mm	6.78
IC13423-EXXZ	8mm	7.78
IC13423-FXXZ	9mm	8.78
IC13423-GXXZ	10mm	9.78

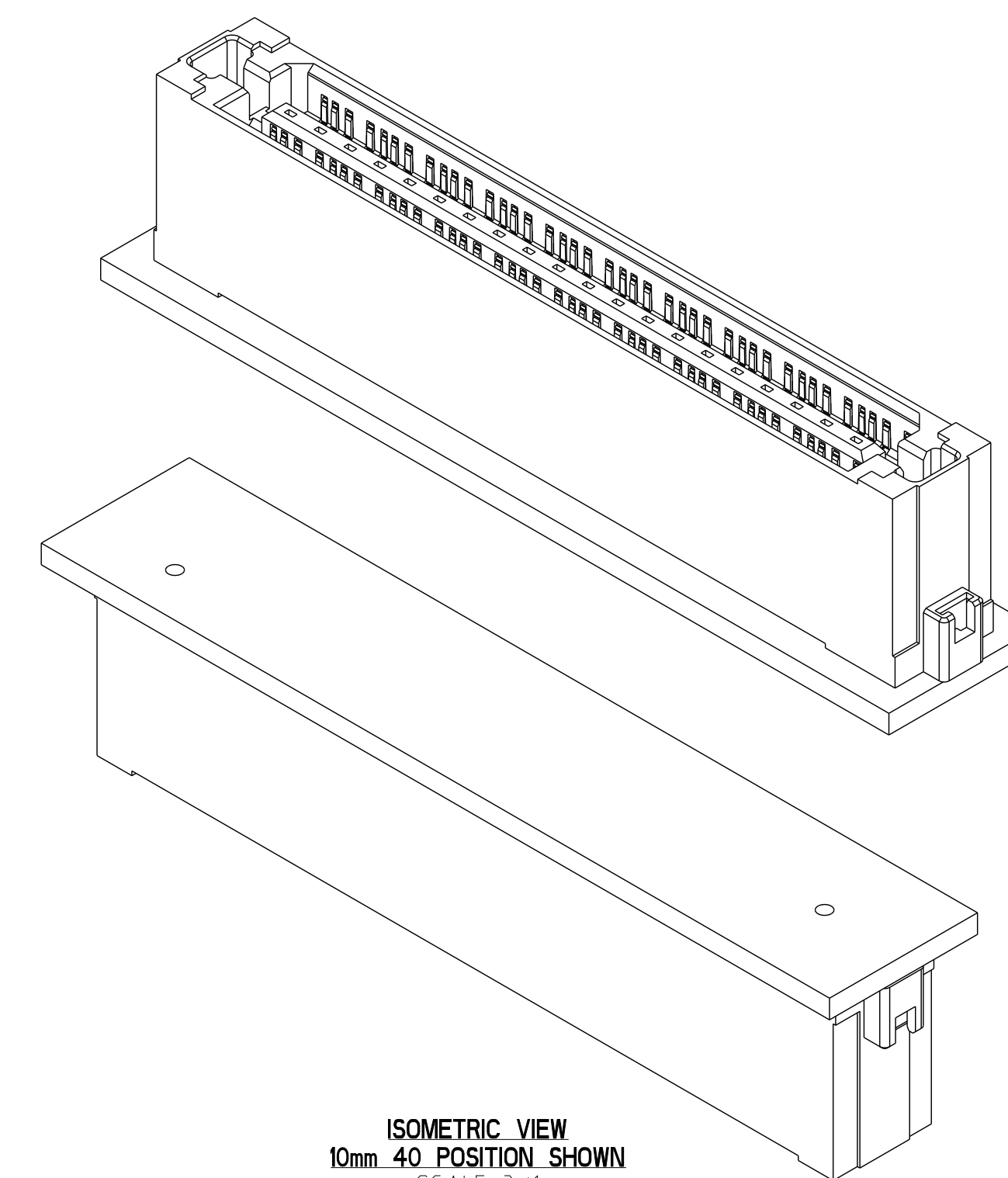
TABLE-4: RETENTION PIN OPTIONS	
PART NUMBER	(L): PROTRUSION BELOW HOUSING
IC13423-XXX0	NO PIN
IC13423-XXX1	1.1MM
IC13423-XXX2	2.5MM

REVISION HISTORY						
ZONE	ECN	REV	DESCRIPTION	DATE	CHANGED BY	APPROVED
SH1	EC-13407	C	UPDATED TABLE 1 & 2 LOSSY DESCRIPTIONS	02/13/2020	M.CHARETH	D.McNAMARA
SH1		D	ADDED HEIGHTS 6-9mm	08/13/2020	M.CHARETH	D.McNAMARA

OMITTED REVISIONS NOT RELEASED. ALL CHANGES INCORPORATED



ISOMETRIC VIEW
4mm 80 POSITION SHOWN
SCALE 3/1



ISOMETRIC VIEW
10mm 40 POSITION SHOWN
SCALE 3/1

IC13423-X X X Z

STACKED HEIGHT

- A = 4MM
- B = 5MM
- C = 6MM
- D = 7MM
- E = 8MM
- F = 9MM
- G = 10MM

POSITION

- 1 = 12
- 2 = 20
- 4 = 40
- 6 = 60
- 8 = 80

ASSEMBLY TYPE

- 1 = REGULAR (WITH GUIDE PINS) & LOSSY
- 2 = REGULAR (WITH GUIDE PINS) & NON-CONDUCTIVE LOSSY
- 3 = SHORT (WITHOUT GUIDE PINS) & LOSSY
- 4 = SHORT (WITHOUT GUIDE PINS) & NON-CONDUCTIVE LOSSY

OPTIONAL RETENTION PIN

- 0 = NO RETENTION PIN
- 1 = SHORT RETENTION PIN
- 2 = LONG RETENTION PIN

NOTES:

- MATERIAL
HOUSING: HIGH TEMPERATURE LCP. COLOR: BLACK
CONTACT: COPPER ALLOY
CONTACT PLATING: UNDERPLATE WITH NICKEL,
HARD GOLD IN MATING AREA
PURE MATTE TIN ON CONTACT TAIL
 - PLEASE REFER TO PRODUCT SPECIFICATION FOR MECHANICAL AND ELECTRICAL SPECIFICATION.
- 3 OPTIONAL SOLDERABLE RETENTION PIN
- 4 PLATED THROUGH HOLE FOR SOLDERABLE RETENTION PIN
RECOMMENDED FINISH: TIN, OSP

DO NOT SCALE DRAWING
UNLESS OTHERWISE SPECIFIED
DIMENSIONS & TOLERANCES ARE
MILLIMETERS
DIMENSIONING PER ASME Y14.5M-2009
TOLERANCES UNLESS SPECIFIED

0.0 = ± 0.15
0.00 = ± 0.05
0.000 = ± 0.01
ANGLES = ± 1°

(INSPECTION DIMENSION)
(REFERENCE DIMENSION)

THIRD ANGLE PROJECTION



APPROVALS	DATE
DRAWN BY: HCL-PV	02/05/2019
CHK'D BY: M.CHARETH	02/05/2019
DESIGNED BY: M.CHARETH	02/05/2019
PROCESS ENGINEERING: M.CHARETH	02/05/2019

THESE DRAWINGS AND SPECIFICATIONS ARE THE PROPERTY OF AMPHENOL CORPORATION AND SHALL NOT BE REPRODUCED, COPIED OR USED AS THE BASIS FOR THE MANUFACTURE OR SALE OF APPARATUS WITHOUT THE WRITTEN PERMISSION OF AMPHENOL CORPORATION.

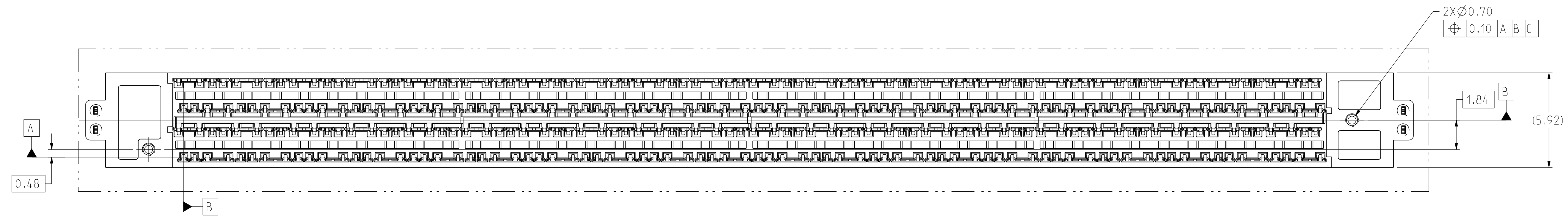
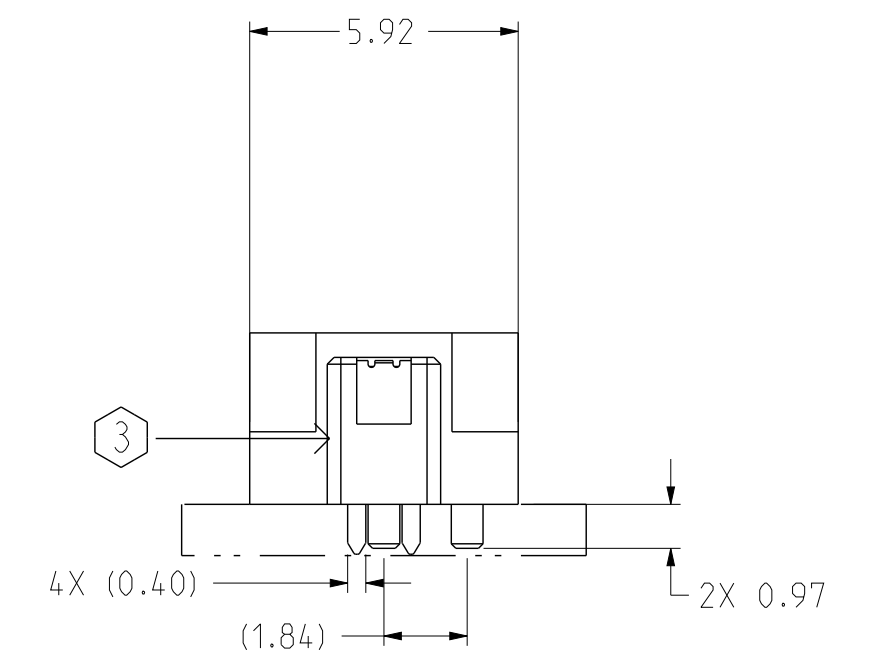
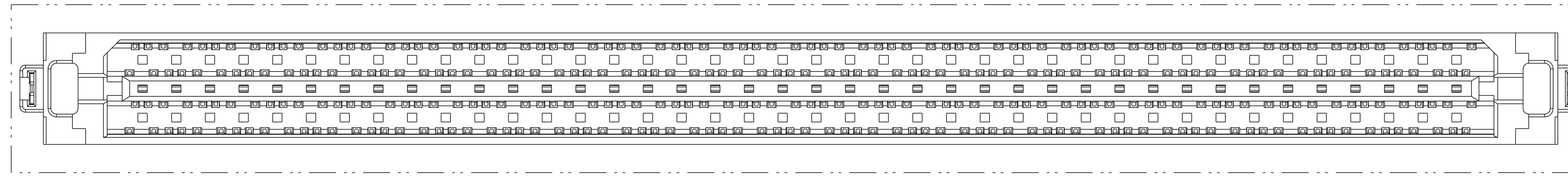


AMPHENOL INTERCON SYSTEMS INC.
825 OLD TRAIL RD, SUITE A
ETTERS, PA 17319
(717) 915-1400

TITLE:		SIZE	DWG. NO.	REV
VERTICAL PLUG ASSEMBLY STACKER, LYNX QD		D	13423C	D
SCALE: 3/1		DWG. TYPE: CUSTOMER USE		SHEET: 1 OF 4

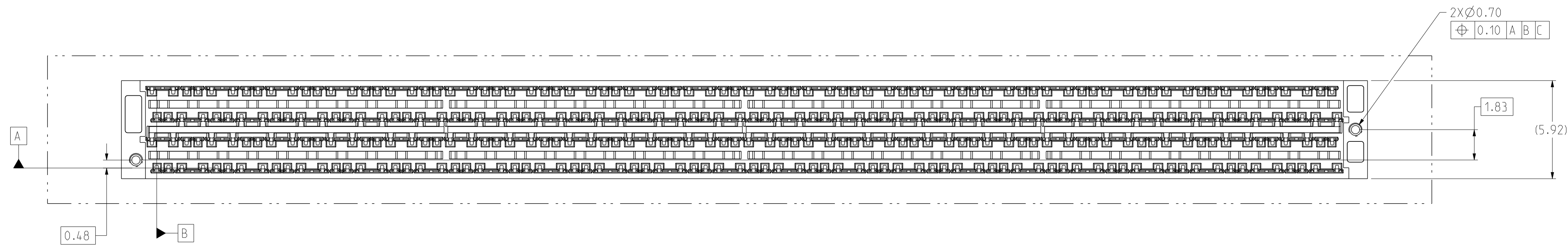
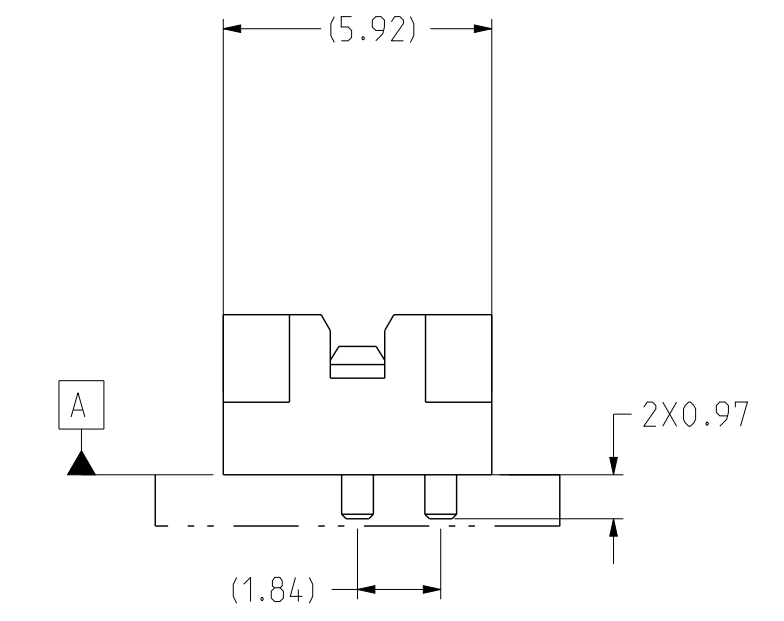
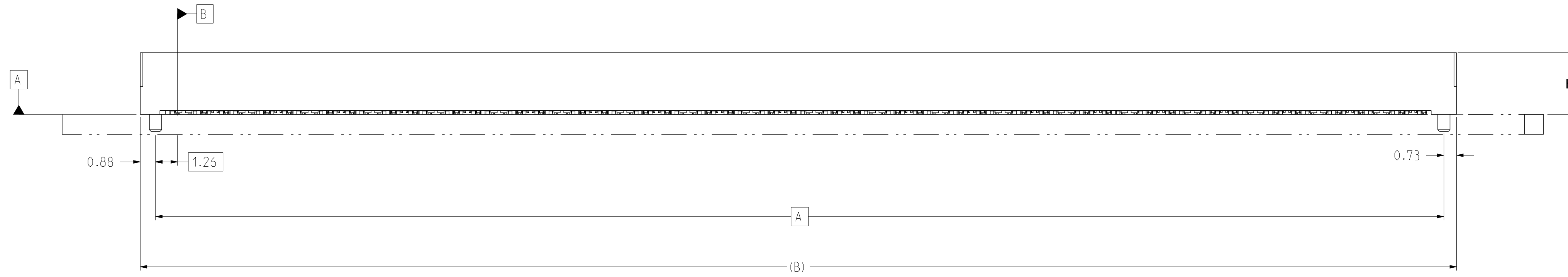
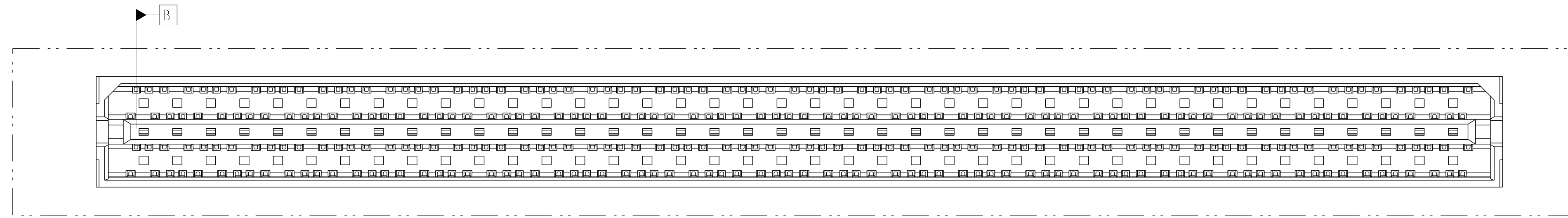


REGULAR VERSION ASSEMBLY



80-POSITION SHOWN

SHORT VERSION ASSEMBLY

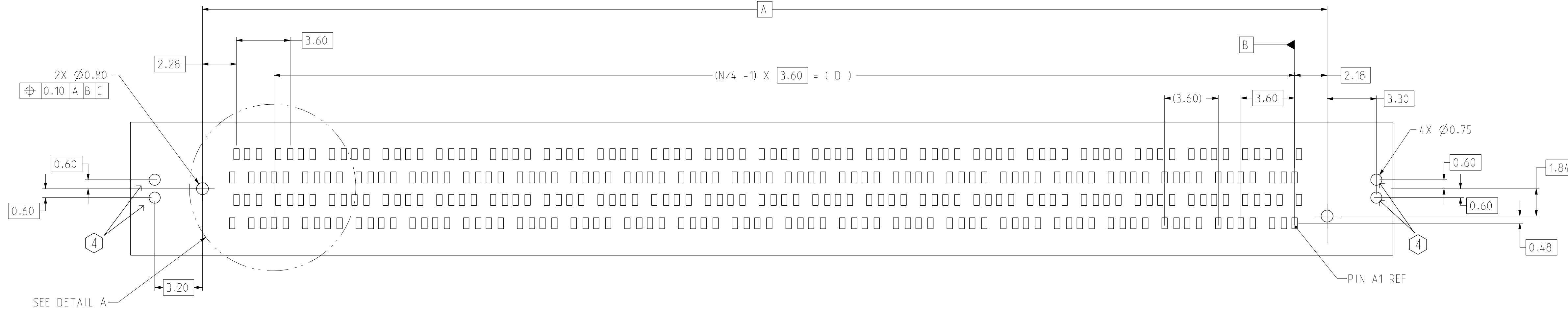


80-POSITION SHOWN

		AMPHENOL INTERCON SYSTEMS INC. 825 OLD TRAIL RD, SUITE A ETTERS, PA 17319 (717) 915-1400	
SIZE	DRAWING NO.	REV	
D	13423C	D	
SCALE: 3/1	DWG TYPE: CUSTOMER	SHEET: 3 OF 4	

TABLE 5			
PART NUMBER	N	A	D
IC13423-X2XZ	20	21.44	14.40
IC13423-X4XZ	40	39.37	32.40
IC13423-X6XZ	60	57.37	50.40
IC13423-X8XZ	80	75.37	68.40

REGULAR VERSION BOARD



SHORT VERSION BOARD

