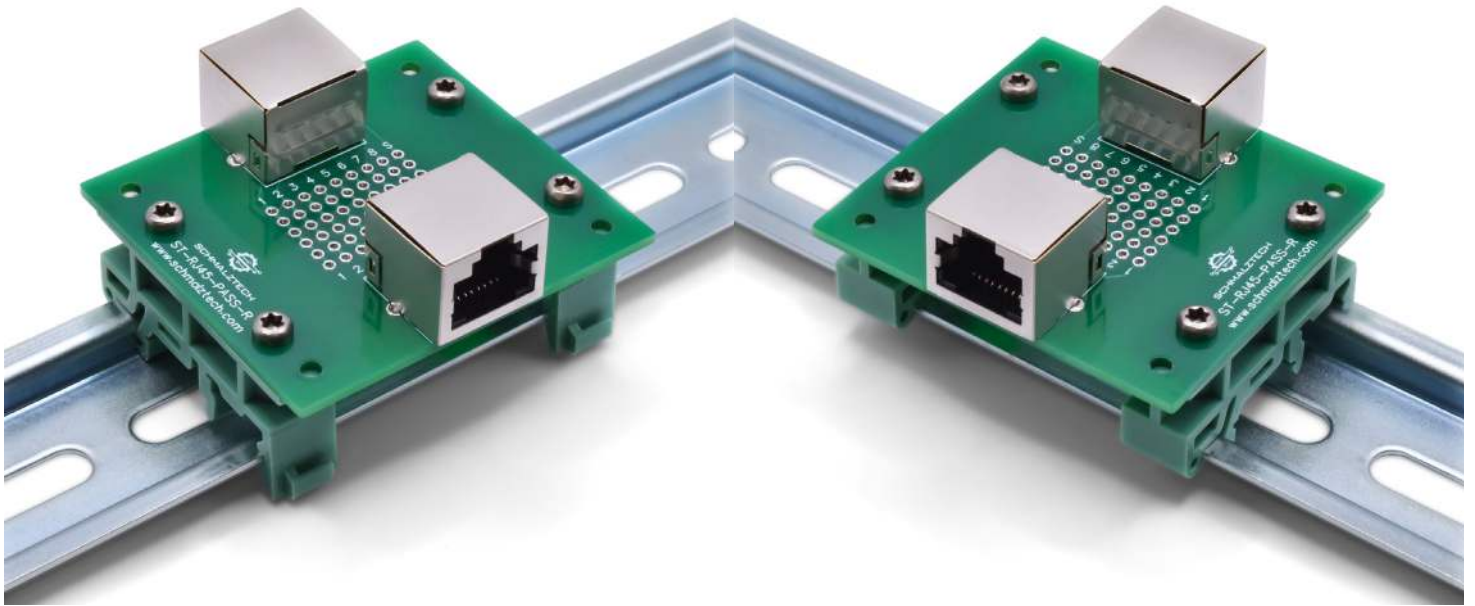


ST-RJ45-PASS-R-DIN

RJ45 Pass Through Breakout Board with DIN Rail Clips



- Breaks out all 8 contacts and the shield
- Prototyping area for in-circuit modifications
- Easy access for probing and debugging
- Easily mounts on a 35mm DIN rail

Specifications	
Connector	8P8C + Shield
Prototyping Hole Size	0.040"
PCB Surface Finish	LF HASL
Temperature Rating	-15°C to +70°C

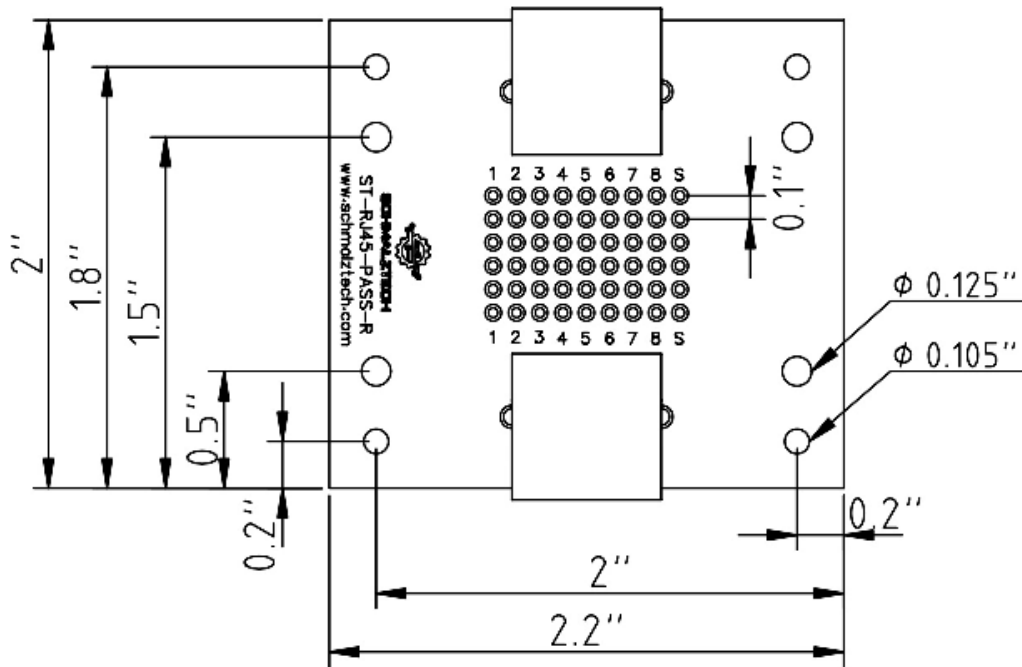
This RJ45 pass-through breakout board provides a convenient method of accessing all the contacts of an 8P8C connector, including the shield. Each of the 9 connections are brought out to a prototyping area to enable in-circuit modifications as well as easy probing and diagnostics. The prototyping grid has a standard 0.1" pattern to enable compatibility with a variety of components. The DIN clips on this model allow it to be easily used with a 35mm DIN rail system, making this board perfect for industrial applications.



ST-RJ45-PASS-R-DIN

RJ45 Pass Through Breakout Board with DIN Rail Clips

Mechanical Drawings



Electrical Connections

Each pin of the RJ45 connector is electrically connected to a single row of the prototyping area and to the corresponding pin of the other RJ45 connector.

ST-RJ45-PASS - Ordering Information

ST-RJ45-PASS- _____ - _____

Form Factor

FT: Rubber Feet
DIN: DIN Rail Mount
SPR: Spacers and Screws

Connector

R: Right Angle
S: Straight

Ordering

To order please visit www.schmalztech.com or one of our distributors to quickly place an online order.

Orders may also be placed by email or phone:

Email: sales@schmalztech.com

Phone: +1 (844) 399-9213

Expedited Shipping

If overnight shipping is required please contact us directly so that we can expedite your order. Overnight shipping is provided through UPS and will incur an additional charge

Custom Designs

Can't find what you need? We can design and produce a custom board to fit your exact needs. Please reach out to us for additional information and pricing.