

Features

- Low Loss
- High Rejection
- Low Ripple

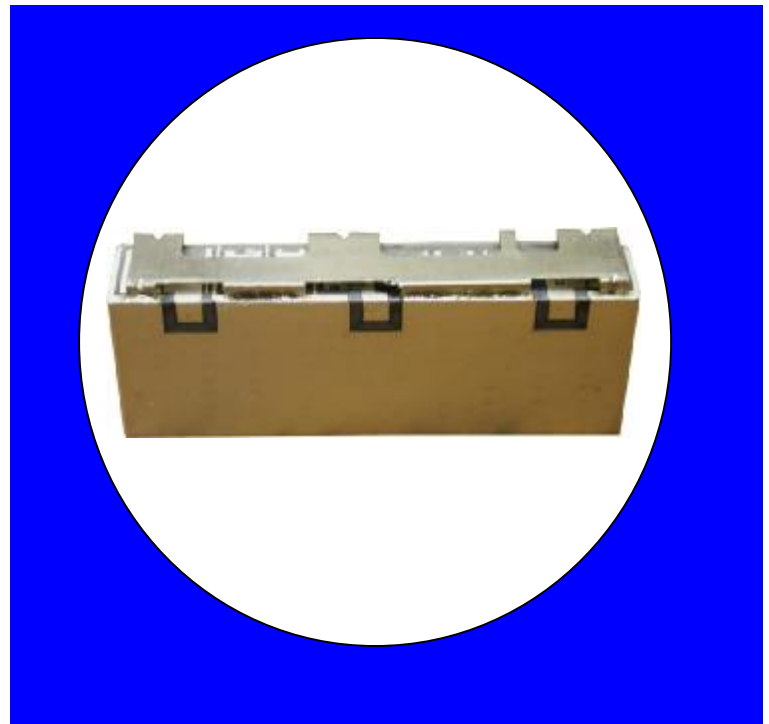
Description

Surface mount, Silver (Ag) coated ceramic filter.

Weight: 15.8 grams typical

Material: Filter is composed of a ceramic block plated with Ag.

Filter complies with RoHS standards.



Electrical Specifications

Parameter	Frequency MHz	Typical @ 25°C	Specification @ 25°C	Spec over -40°C to +85°C
Low Band Response				
Passband Iloss	698 - 716	-2.2	-3.30	-3.50
Passband Ripple	698 - 716	1.7	2.40	2.50
Passband Return Loss Forward	698 - 716	-14.2	-10.50	-10.00
Passband Return Loss Reverse	698 - 716	-15.1	-10.50	-10.00
Attenuation	728 - 746	-52.7	-39.00	-38.00
High Band Response				
Passband Iloss	728 - 746	-3.1	-3.60	-3.80
Passband Ripple	728 - 746	2.0	2.90	3.00
Passband Return Loss Forward	728 - 746	-12.3	-10.50	-10.00
Passband Return Loss Reverse	728 - 746	-12.5	-10.50	-10.00
Attenuation	698 - 716	-67.5	-52.00	-51.00
Isolation				
Rejection @ Low Band	698 - 716	-65.9	-52.00	-51.00
Rejection @ High Band	728 - 746	-56.1	-41.00	-40.00
Power into any port		3 Watt max		

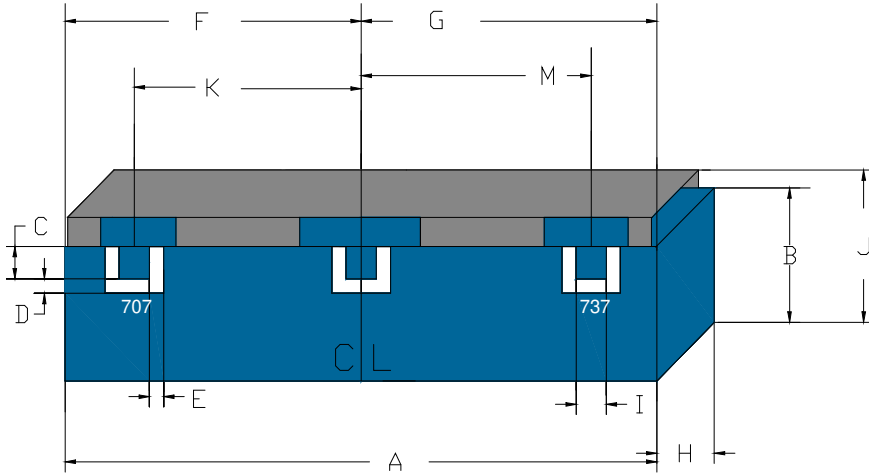
Note: Supplier shall test each filter to the critical electrical specifications of the above table. Any subsequent audits may deviate from in value due to measurement repeatability among different test systems. Such deviations shall not exceed the following limits:

Specification Allowance	
Insertion Loss	0.1 dB
Return Loss	1.0 dB
Stopbands	1.0 dB

*This product is covered by one or more of the following U.S. and foreign patents including: US 4,692,726;US 4,742,562; US 4,800,348;US 4,829,274;US 5,146,193;EP 0573597;DE 0573597;FR 0573597;JP 508149/92;KR 142171;US 5,162,760;US 5,218,329;US 5,250,916;US 5,327,109;US 5,488,335;CA 2114029;FR 9306297;GB 2273393;JP 3205337;KR 115113;CN 93106228.4;US 5,512,866;EP 0706719;DE 0706719;FR 0706719;GB 0706719;CN 95190359.4;US 5,602,518;US 5,721,520;US 5,745,018;EP 0910875;DE 0910875;DK 0910875;FR 0910875;GB 0910875;IE 0910875;JP 505182/98;KR 10-323013;US 5,994,978;US 6,462,629;CN 00810420.4;US 6,559,735;US 6,650,202;US 6,834,429.Other US and foreign patents pending.

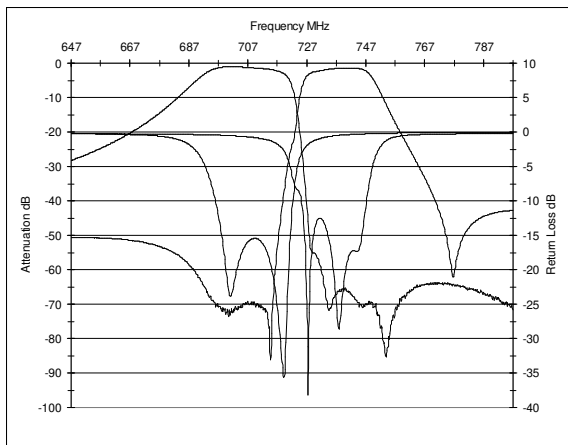
CTS Corporation 2006 reserves all copyrights in the layout, design and configuration of the patterns on this product.

Mechanical Drawing

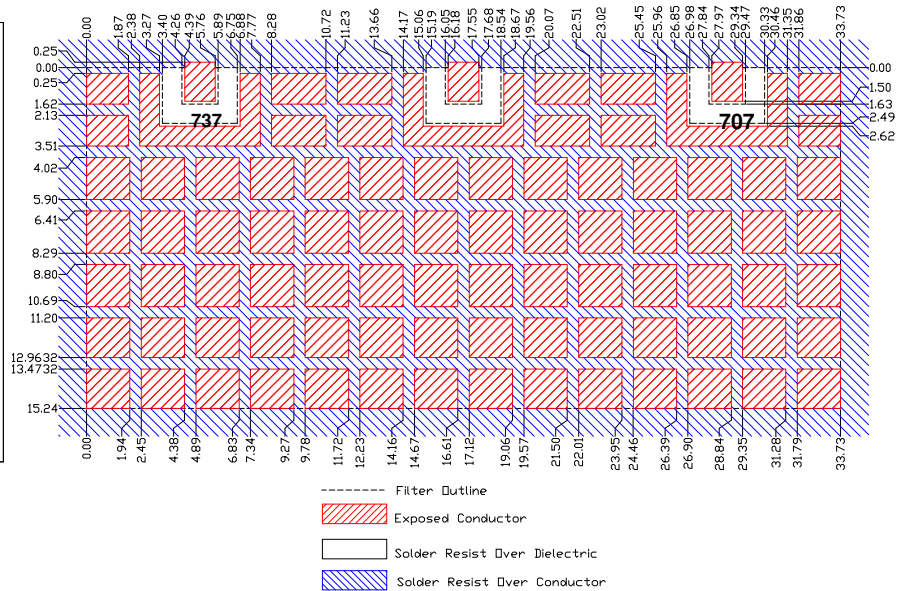


Dimension	Nominal (mm)	Tolerance (mm) +/-
A	33.73	0.27
B	15.80	max
C	1.63	0.13
D	0.86	0.13
E	0.86	0.13
F	16.87	0.13
G	16.87	0.13
H	6.56	max
I	1.63	0.13
J	16.50	max
K	11.79	0.13
M	11.79	0.13

Electrical response

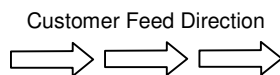


PCB Layout



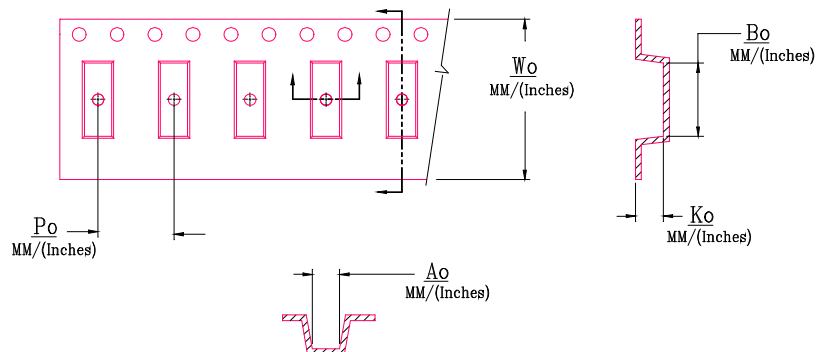
Packaging and Marking

DIMENSION	UNITS	SPECIFICATION
REEL DIAMETER	mm	558.8
REEL WEIGHT	kg	5.53
REEL QUANTITY	ea.	350



Product Marking

CTS
686
YWW



Wo	Ao	Bo	Ko	Po
Inches/mm	Inches/mm	Inches/mm	Inches/mm	Inches/mm
2.205"/56.0	0.661"/16.8	1.35"/34.3	0.270"/6.85	0.945"/24.0