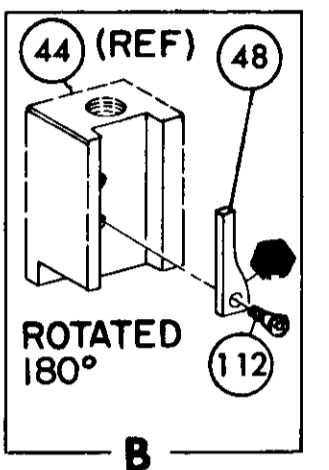
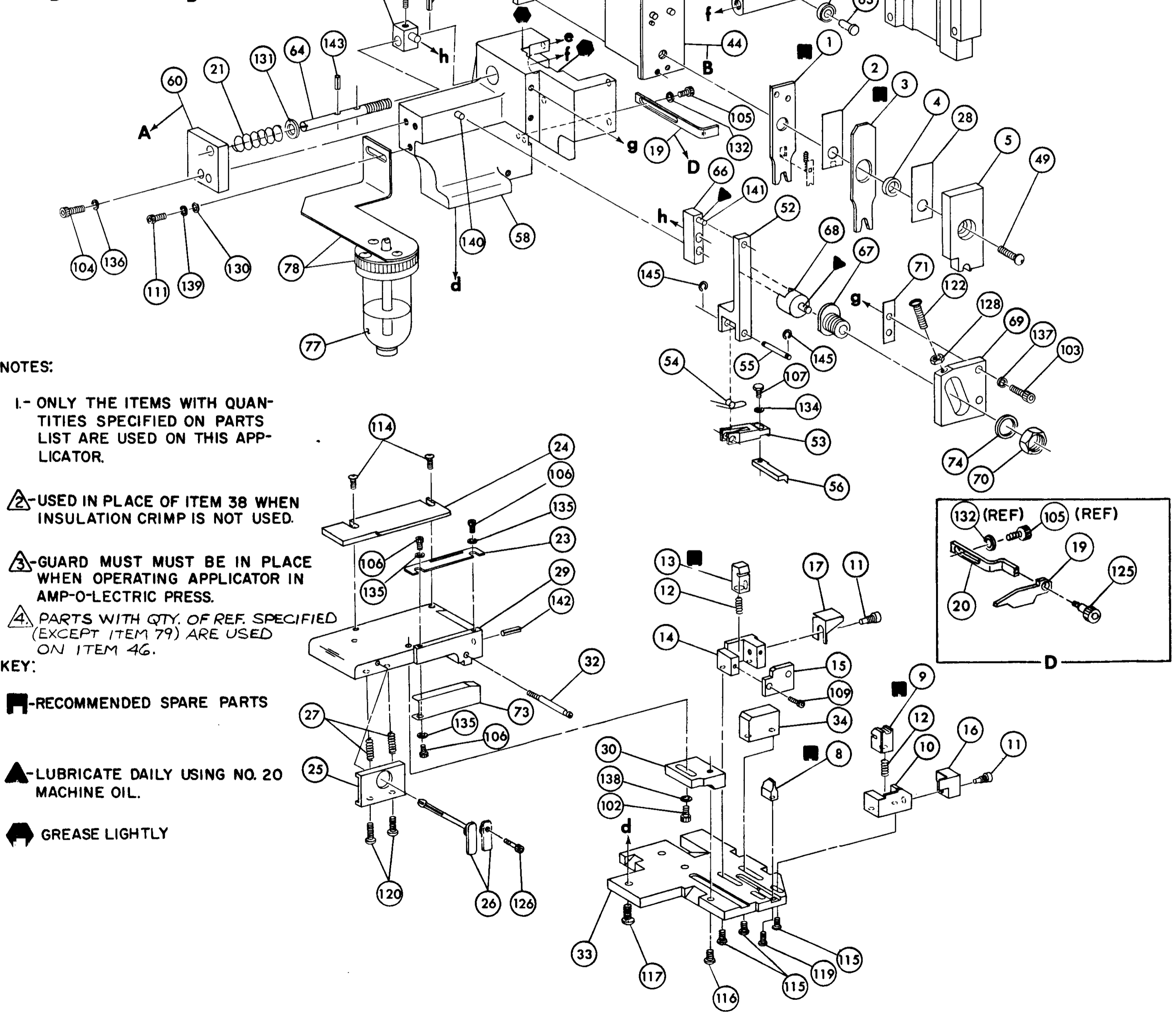
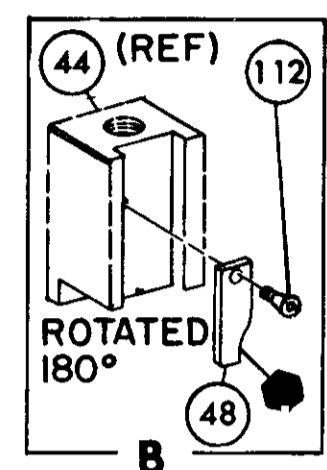


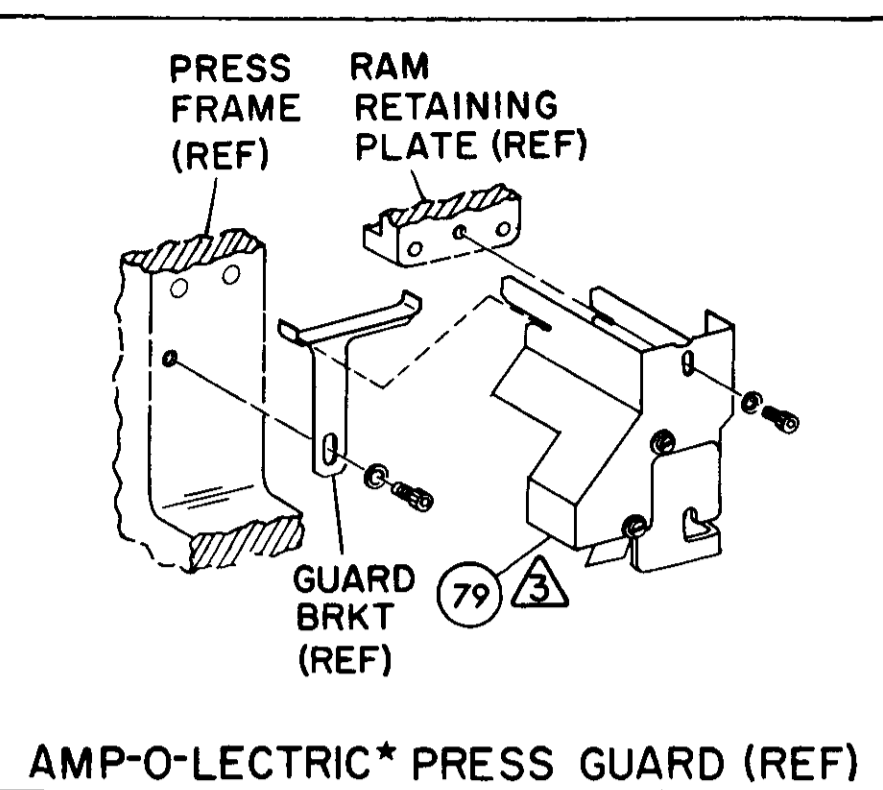
PRE-FEED  
1 1/8" STROKE



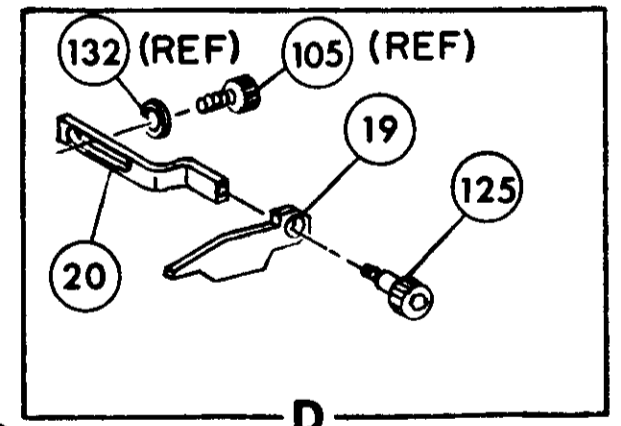
POST-FEED  
1 5/8" STROKE



- NOTES:
- I- ONLY THE ITEMS WITH QUANTITIES SPECIFIED ON PARTS LIST ARE USED ON THIS APPLICATOR.
  - △- USED IN PLACE OF ITEM 38 WHEN INSULATION CRIMP IS NOT USED.
  - △- GUARD MUST BE IN PLACE WHEN OPERATING APPLICATOR IN AMP-O-LECTRIC PRESS.
  - △- PARTS WITH QTY OF REF. SPECIFIED (EXCEPT ITEM 79) ARE USED ON ITEM 46.
- KEY:
- RECOMMENDED SPARE PARTS
  - ▲- LUBRICATE DAILY USING NO. 20 MACHINE OIL.
  - ⚡- GREASE LIGHTLY



AMP-O-LECTRIC\* PRESS GUARD (REF)



D

REF.	PART NO	DESCRIPTION	QTY	PART NO	DESCRIPTION	ITEM NO
REF.	21045-3	RING, RETAINING 'C' (.187 DIA) FEED FINGER PIN	145	REF.	454220-1	CAP, HOUSING
			144	REF.	454485-1	HOUSING
REF.	5-21028-1	PIN, SLOT SPR (.125 DIA X .50) ADJ ROD	143			57
1	4-21028-0	PIN, SLOT SPR (.093 DIA X .75) STR G PLATE	142	1	690542-2	PAWL, FEED
REF.	1-21030-1	PIN, DOWEL (.187 DIA X .50) LEVER	141	REF.	240624-1	PIN, FEED FINGER
REF.	1-21030-6	PIN, DOWEL (.187 DIA X 1.25) HOUSING	140	REF.	691499-1	SPRING, FEED FINGER
1	21024-5	WASHER, LOCK (NO 10) LUB ASSY	139	REF.	690541-1	FINGER, FEED
			138	REF.	455679-1	LEVER, TERMINAL FEED ARM
REF.	21024-5	WASHER, LOCK (NO 10) STRIP GUIDE ADJ BLOCK	137	1	811242-2	BUMPER, HOLDDOWN
REF.	21024-5	WASHER, LOCK (NO 10) ADJ PLATE	136	1	690753-1	SPACER, TONKER
3	21024-2	WASHER, LOCK (NO 4) FRONT STRIP GUIDE	135	1	7-21002-9	BOLT, CRIMPER
1	21024-4	WASHER, LOCK (NO 8) FEED FINGER	134	1	690602-5	CAM PRE FEED 1 1/8 STROKE
			133			47
1	21024-4	WASHER, LOCK (NO 8) STRIPPER	132	1	459456-1	APPLICATOR, BASIC (SUB ASSY) △
REF.	21899-4	WASHER, FLAT (5/16 DIA) SCREW ADJ	131	1	690191-1	PLUG, NYLON
1	21899-2	WASHER, FLAT (NO 10) LUB ASSY	130	1	455673-6	RAM
			129	1	690125-1	WASHER, LAMINATED
REF.	21048-5	NUT, HEX MACH (6-32) HOLDDOWN	128	1	690124-1	WASHER, RAM
REF.	21048-5	NUT, HEX MACH (6-32) FEED ADJ	127	1	690223-1	DISC, SPACER
			126	1	23241-6	BALL, STEEL
			125	1	690170-1	SPRING, COMPRESSION
1	456567-1	SCR, SHLD (.188 DIA X .125 LG) STRIPPER	124			39
1	21009-2	SCR, SKT SET (1/4-20 X .25) (LOC-WEL) RAM	123			38
2	21017-2	SCR, DRIVE (#2 X .19)	122	1	1-690141-9	DISC, WIRE
REF.	6-23715-5	SCR, PAN HD MACH (6-32 X 1.50) FEED ADJ	121	1	22480-5	WASHER, SPRING
1	461264-1	PLATE, IDENTIFICATION	120	1	690212-1	POST, RAM
2	2-21002-9	SCR, BUT HD SKT CAP (10-32 X .75) DRAG	119			35
1	22733-8	SCR, BUT HD SKT CAP (8-32 X .38) (LOC-WEL) ANVIL	118	REF.	455675-1	SUPPORT, TERMINAL
REF.	2-21002-9	SCR, BUT HD SKT CAP (10-32 X .75) CAP	117	1	690432-3	PLATE, BASE
REF.	17177-1	SCR, BUT HD SKT CAP (1/4-20 X .75) HOUSING	116			32
REF.	2-21002-7	SCR, BUT HD SKT CAP (10-32 X .50) SG ADJ BLOCK	115	REF.	455689-1	SCREW, ADJUSTMENT
2	2-21002-2	SCR, BUT HD SKT CAP (8-32 X .50) SHEAR	114	1	455671-1	BLOCK, STRIP GUIDE ADJ
2	2-21002-2	SCR, BUT HD SKT CAP (8-32 X .50) R STRIP GUIDE	113	2	1-455888-8	PLATE, STRIP GUIDE
			112	1	1-22284-0	SPACER, FRONT SHEAR DEPRESSOR
1	2-21003-0	SCR, FLAT HD SKT CAP (6-32 X .50) CAM	111	1	690546-1	SPRING, DRAG
1	3-21000-4	SCR, SKT HD CAP (10-32 X .38) LUBRICATOR ASSY	110	1	240792-1	LEVER, DRAG RELEASE
1	23030-1	SCR, SKT HD CAP (6-32 X .25) (LOC-WEL) CP DISC	109	1	8-690504-1	DRAG, STOCK
			108	1	690438-1	GUIDE STRIP (REAR)
			107	1	690438-1	GUIDE, STRIP (FRONT)
1	2-22603-0	SCR, HEX HD MACH (8-32 X .31) FEED FINGER	106	REF.	4-22284-9	SPRING, FEED RETURN
3	1-21000-3	SCR, SKT HD CAP (4-40 X .25) F STRIP GUIDE	105	1	458950-1	ARM, STRIPPER
1	2-21000-7	SCR, SKT HD CAP (8-32 X .50) STRIPPER	104	1	458949-1	STRIPPER
REF.	3-21000-7	SCR, SKT HD CAP (10-32 X .75) FEED ROD GUIDE	103			18
REF.	3-21000-6	SCR, SKT HD CAP (10-32 X .62) FEED ADJ BLOCK	102			17
1	3-21000-4	SCR, SKT HD CAP (10-32 X .38) SG ADJ BLOCK	101	1	691667-1	HOLDER, TERMINAL
REF.	3-21000-4	SCR, SKT HD CAP (10-32 X .38) PIVOT BLOCK	100			16
REF.	455749-1	GUARD, WINDOW	79			15
1	1-465184-0	LUBRICATOR ASSY	78			14
REF.	852931-2	OIL, LUBRICATING	77			13
			76	1	5-22280-0	SHEAR, FLOAT (REAR)
			75	1	690461-1	SPRING, SHEAR
			74	1	690459-1	STOP, SHEAR
REF.	458109-1	WASHER, SPECIAL	73	1	454276-1	HOLDER, SHEAR (FRONT)
1	454877-3	PLATE, STRIP GUIDE COVER	72	1	805840-3	SHEAR, FLOAT (FRONT)
1	690603-1	SPRING, ASSIST	71			9
REF.	690517-1	SPACER	70			8
			69	1	455889-9	ANVIL
22594-8	NUT, HEX		68			7
240628-1	PLATE, ADJUSTMENT		67			6
240626-1	SHAFT, PIVOT		66			5
240633-1	BUSHING		65			4
455680-1	LEVER, INTERMEDIATE		64			3
240629-1	BLOCK, PIVOT		63	1	462808-4	CRIMPER, INSULATION
240632-2	SCREW, ADJUSTMENT FEED ROD		62			2
240659-3	PIN, CAM ROLLER		61			1
240658-1	ROLLER, CAM		60			
454398-2	ROD, FEED					
REF.	454178-1	GUIDE, FEED ROD				

CRIMPING DATA				APPLICATOR WILL APPLY	
PAD LTR	CRIMP HEIGHT	WIRE SIZE	STRIP LENGTH		
A	.046	19			63165
B	.044	20 or 21			63469
C	.042	22 or 23			
D	NOT USED				

CRIMP	SIZE	TYPE	FEED	APPL INST
WIRE	.090	"F"		
INSUL	—	—	.430	A18040
WIRE RANGE	19-23 MAG			
INSULATION RANGE	—			
PRESS NO				565435-5

REMARKS	NO	REV
APPL USED ON MACHINE PART NO	MACH SERIAL NO	DISTRIBUTION
CUSTOMER NAME	APPL SERIAL NO	ORIGINAL
ADDRESS	PURCHASE ORDER	CUSTOMER COPY
CITY	ENG APP	FIELD ENG COPY

E	0150-7793-97	6/17	SET UP GAGE 10-1
D	0150-7489-97, REACT	6/17	458637-11194
C	0150-6183-96, OBS	6/17	APP
B	0150-2727-96	6/17	CHK 7-33 REL
A	CC-A-125288	6/17	
A	CC-A-093038	6/17	
A	CC-A-047399	6/17	



LOG A D NO 567086-1 REV E

MINIATURE QUICK CHANGE APPLICATOR SIDE FEED (250 AMP LINAR FASTON TAB)

THIS DRAWING IS A CONTROLLED DOCUMENT FOR AMP INC. IT IS SUBJECT TO CHANGE AND THE USER IS ADVISED TO CONTACT THE DRAWING ENGINEER FOR THE LATEST REVISION.

THIS INFORMATION IS CONFIDENTIAL AND IS DISCLOSED TO YOU ON THE CONDITION THAT YOU WILL NOT DISCLOSE IT TO OTHER THAN AMP PERSONNEL WITHOUT WRITTEN AUTHORIZATION FROM AMP INCORPORATED, HARRISBURG, PA.