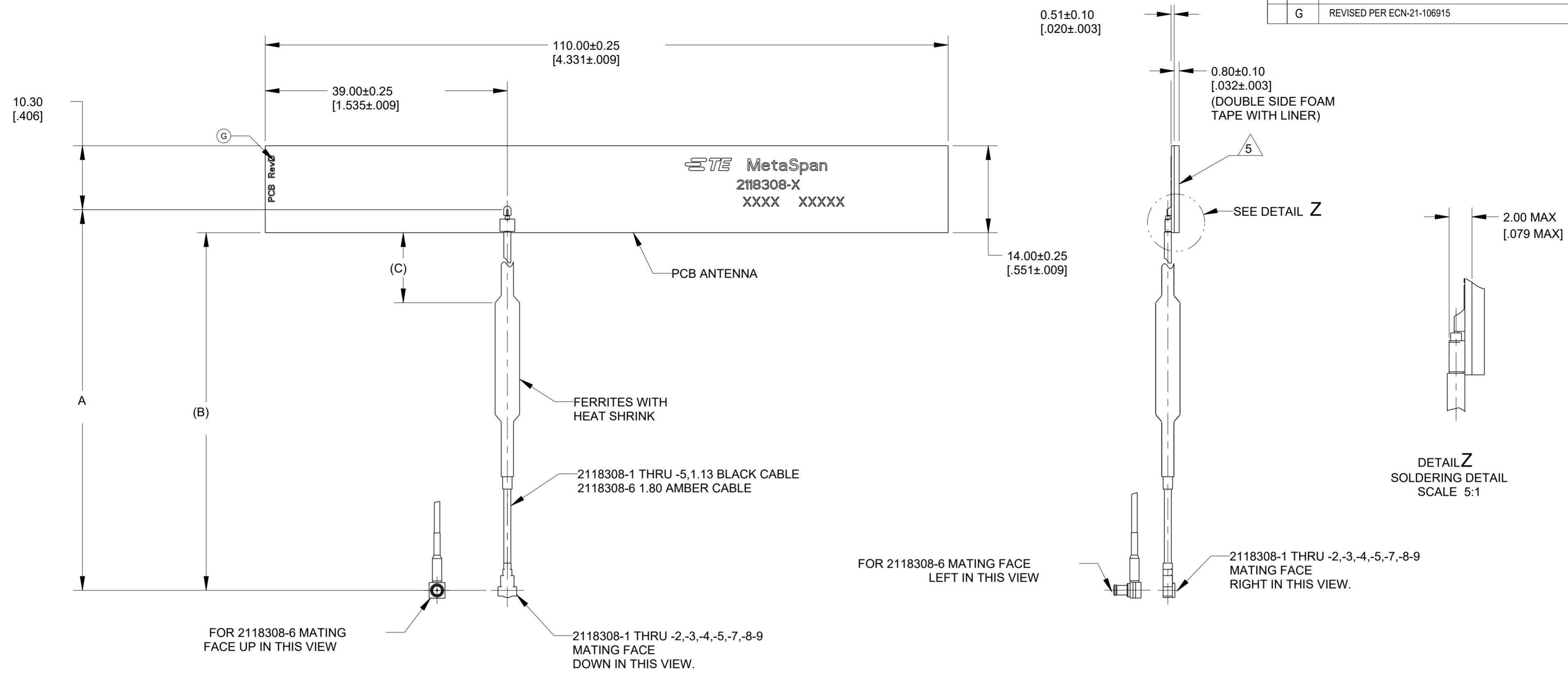


THIS DRAWING IS UNPUBLISHED. RELEASED FOR PUBLICATION 20
 BY TYCO ELECTRONICS CORPORATION ALL RIGHTS RESERVED.

| LOC | DIST | REVISIONS | | | |
|-----|------|-------------|---------------------------|-----------|-------|
| P | LTR | DESCRIPTION | DATE | DWN | APVD |
| 00 | AJ | E | REVISED PER ECO-18-020155 | 21DEC2018 | CR CR |
| | | F | REVISED PER ECO-20-009604 | 25JUN2020 | SJ JH |
| | | F1 | REVISED PER ECO-20-010088 | 20JUL2020 | SJ JH |
| | | G | REVISED PER ECN-21-106915 | 23JUN2021 | SJ CY |



- PRODUCT AND PROCESSING MEETS THE REQUIREMENTS OF TE CONNECTIVITY ENVIRONMENTAL STANDARD TEC-138-702. LOW HALOGEN: CODE2:LOW Br/Cl PER TEC-138-702
- MINIMUM IDENTIFICATION INCLUDES: TE LOGO, MetaSpan, TE ASSEMBLY PART NUMBER, AND FOUR DIGIT DATE CODE (FIRST 2 DIGITS FOR THE WEEK CODE AND THE 2ND TWO DIGITS FOR THE YEAR CODE). PCB REVISION AT SEPARATE LOCATION.
- MATERIALS: PCB MATERIAL. TOTAL THICKNESS: 0.51 [0.020], SINGLE SIDE, 1/2 OUNCE COPPER.
- OVERPLATING: PLATING ON EXPOSED COPPER AREAS TO BE E.N.I.G. FINISH.
- REMOVE LINER FROM DOUBLE SIDED FOAM TAPE 3M VHB RP32 TO APPLY ANTENNA IN APPLICATION.
- PRODUCT PACKAGED IN A BAG.
- CUSTOMER SPECIFIC REQUIRED LABELS TO BE PLACED ON BAGS AND BOXES
- THIS PART IS SPECIAL PACKAGED AND IS NOT FOR GENERAL SALES. USE "-3" VERSION FOR GENERAL SALES.

7 8

| | | | | |
|------------------|-------|----------------|-----------------|-------------|
| MHF4L | 70.0 | 346.3 | 350.0 | 2118308-9 |
| MHF | 175.0 | 286.3 | 290.0 | 2118308-8 |
| MHF | 70.0 | 146.30 (5.759) | 150.00 (5.905) | 2118308-7 |
| MCX RA PLUG | 40.0 | 190.0(7.48) | 193.7(7.626) | 2118308-6 |
| MHF | 70.0 | 200.0(7.874) | 203.7(8.02) | 2118308-5 |
| MHF | 70.0 | 496.30(19.539) | 500.00(19.685) | 2118308-4 |
| MHF | 70.0 | 146.30(5.759) | 150.00(5.905) | 2118308-3 |
| MHF4L | 70.0 | 116.30(4.579) | 120.00(4.724) | 2118308-2 |
| MHF | 70.0 | 116.30(4.579) | 120.00(4.724) | 2118308-1 |
| (CONNECTOR TYPE) | C REF | B REF | A ±5.00 (±.196) | PART NUMBER |

THIS DRAWING IS A CONTROLLED DOCUMENT.

| | | |
|------|-------------|-----------|
| DWN | K. FOLTZ | 01MAR2013 |
| CHK | G. GRIFFITH | 04MAR2013 |
| APVD | G. GRIFFITH | 04MAR2013 |

TE Connectivity

4 G WORLD BAND MetaSpan
CABLED PCB GP INDEPENDENT

| | | | | | | | |
|------------------|----|-----------|-------|------------|-----------|---------------|---|
| SIZE | A2 | CAGE CODE | 00779 | DRAWING NO | C-2118308 | RESTRICTED TO | - |
| CUSTOMER DRAWING | | SCALE | 1:1 | SHEET | 1 OF 1 | REV | G |