

DO NOT SCALE FROM THIS PRINT

DESIGNED & DIMENSIONED IN INCHES[MILLIMETERS]

PRF04-P-C-EP-335A-RS

SERIES  
-04: TNCA

GENDER  
-P: PLUG

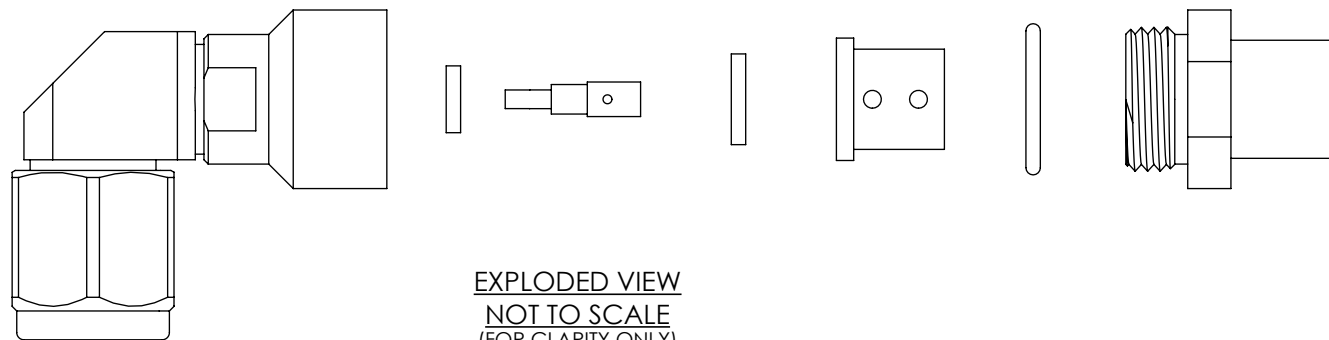
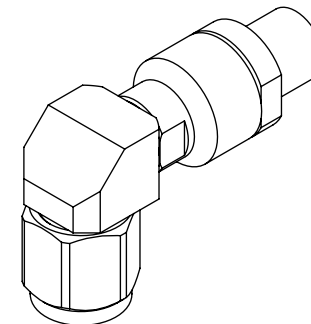
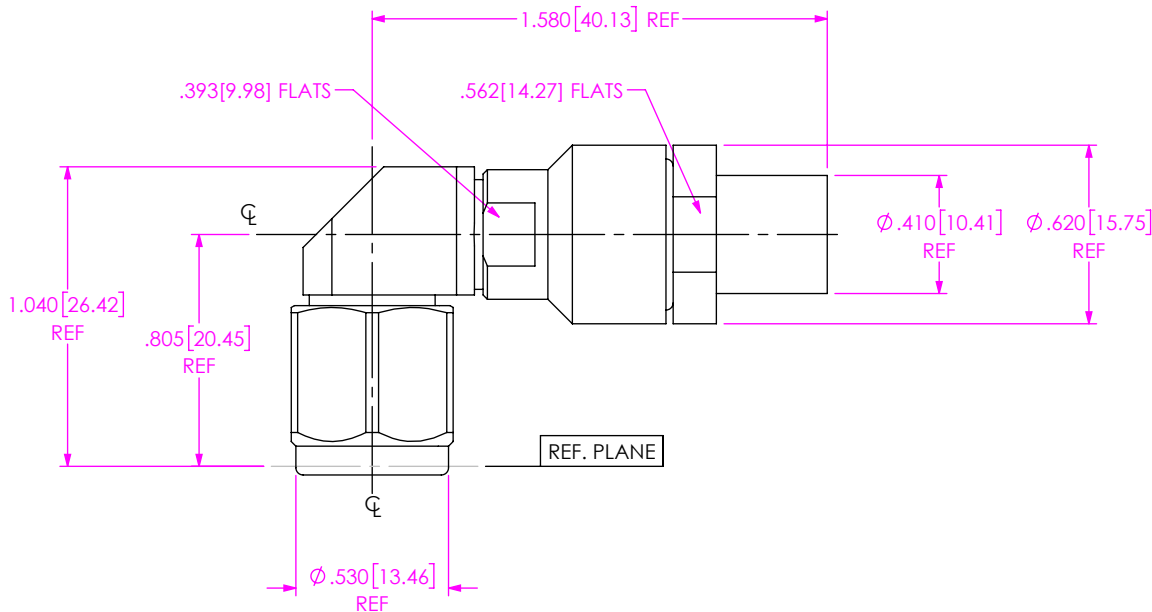
TYPE  
-C: CABLE

FINISH  
-EP: 50µ" EXTRA HEAVY GOLD CENTER CONTACT, PASSIVATED OUTER CONTACT

TERMINATION  
-S: SOLDER CLAMP

ORIENTATION  
-R: RIGHT ANGLE

CABLE TYPE  
-335A: HARBOUR LL335I



NOTES:

- MATERIAL:  
BODY, COUPLING & CLAMP NUTS: STAINLESS STEEL.  
CONTACT & LOCK RING: BERYLLIUM COPPER.  
SOLDER FERRULE: BRASS.  
GASKET & O-RING: SILICONE RUBBER.  
INSULATORS: PTFE.  
DIELECTRIC BEADS: ULTEM 1000.
- FINISH:  
BODY, COUPLING & CLAMP NUTS: PASSIVATED.  
CONTACT: 50µ" MIN. GOLD OVER 50µ" MIN. NICKEL PLATE.  
SOLDER FERRULE: 10µ" MIN. GOLD OVER 50µ" MIN. NICKEL PLATE.
- PCI P/N: 3560.

UNLESS OTHERWISE SPECIFIED, DIMENSIONS ARE IN INCHES.  
TOLERANCES ARE:  
DECIMALS ANGLES  
.XX: ±.01 [0.3] 1°  
.XXX: ±.005 [0.13]  
.XXXX: ±.0005 [0.013]

**PROPRIETARY NOTE**  
THIS DOCUMENT CONTAINS CONFIDENTIAL AND PROPRIETARY INFORMATION AND ALL DESIGN, MANUFACTURING, REPRODUCTION, USE, PATENT RIGHTS AND SALES RIGHTS ARE EXPRESSLY RESERVED BY SAMTEC, INC. THIS DOCUMENT SHALL NOT BE DISCLOSED, IN WHOLE OR PART, TO ANY UNAUTHORIZED PERSON OR ENTITY NOR REPRODUCED, TRANSFERRED OR INCORPORATED IN ANY OTHER PROJECT IN ANY MANNER WITHOUT THE EXPRESS WRITTEN CONSENT OF SAMTEC, INC.



520 PARK EAST BLVD, NEW ALBANY, IN 47150  
PHONE: 812-944-6733 FAX: 812-948-5047  
e-Mail info@SAMTEC.com code 55322

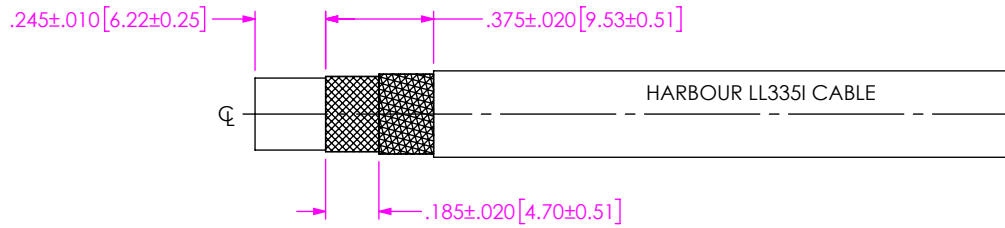
DO NOT SCALE DRAWING

SHEET SCALE: 1.5:1

DESCRIPTION: TNCA RA PLUG, SOLDER CLAMP FOR HARBOUR LL335I CABLE

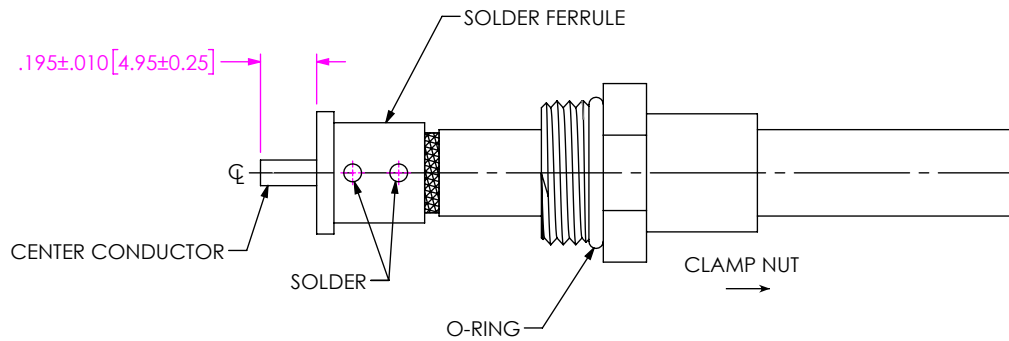
DWG. NO. PRF04-P-C-EP-335A-RS

BY: SAMUEL C 07/31/2020 SHEET 1 OF 3



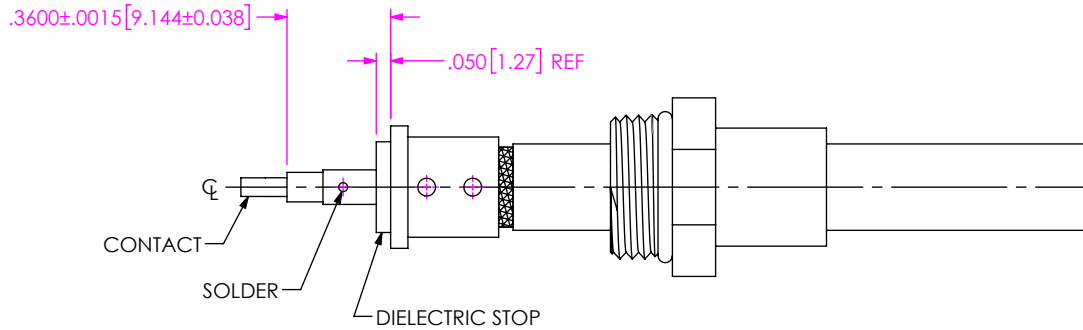
1. TRIM CABLE TO EXPOSE BRAIDS AND DIELECTRIC AS SHOWN.

IN-PROCESS 1




- 2A. SLIDE CLAMP NUT OVER CABLE AS SHOWN.
- 2B. INSERT CABLE INTO SOLDER FERRULE UNTIL INNER BRAID SEATS IN FERRULE. THEN SOLDER CABLE BRAIDS WHERE SHOWN.
- 2C. TRIM CABLE DIELECTRIC FLUSH WITH FACE OF FERRULE.

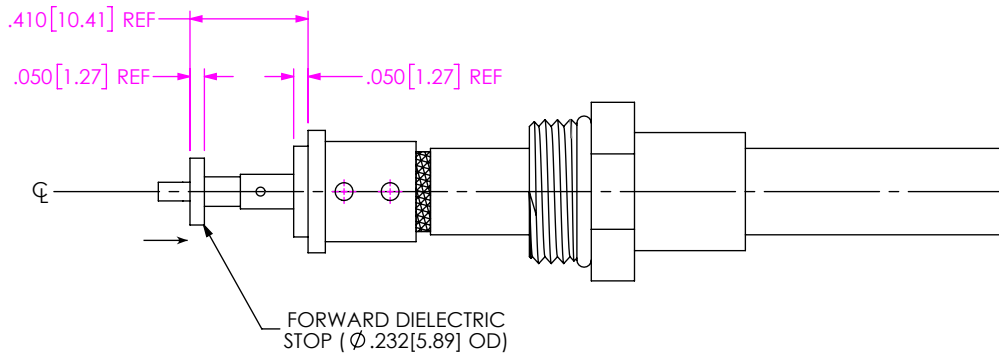
IN-PROCESS 2



- 3A. SLIDE DIELECTRIC STOP ( Ø.315[8.00] OD) ONTO CABLE CENTER CONDUCTOR AGAINST FACE OF SOLDER FERRULE.
- 3B. SOLDER CONTACT FLUSH TO DIELECTRIC STOP TO DIMENSION SHOWN.

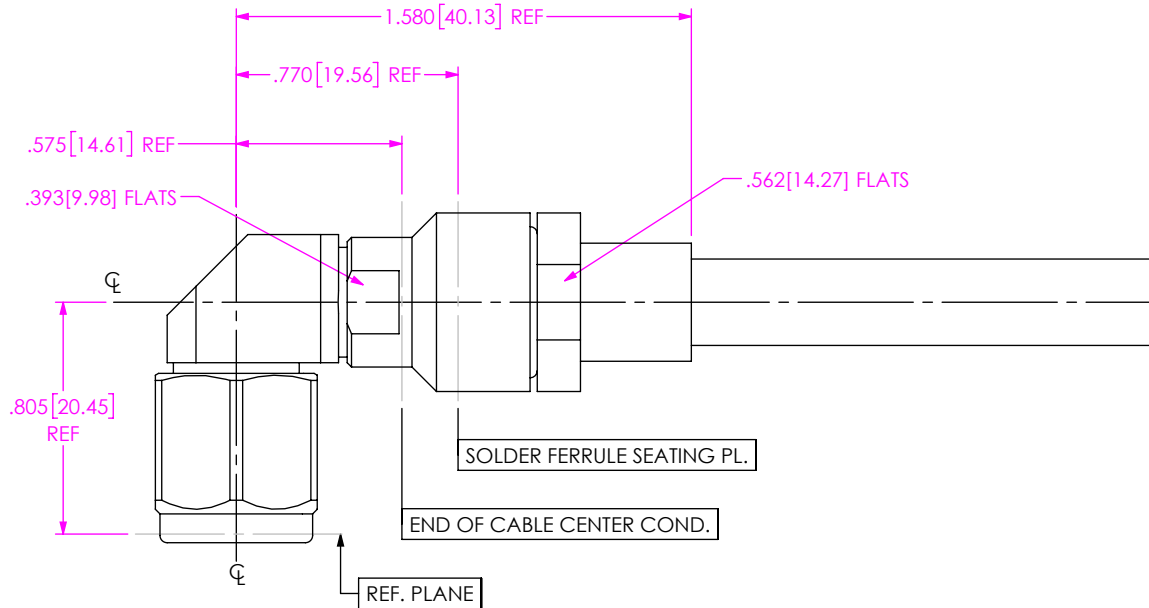
IN-PROCESS 3

|   |   |
|---|---|
| <p><b>PROPRIETARY NOTE</b></p> <p>THIS DOCUMENT CONTAINS CONFIDENTIAL AND PROPRIETARY INFORMATION AND ALL DESIGN, MANUFACTURING, REPRODUCTION, USE, PATENT RIGHTS AND SALES RIGHTS ARE EXPRESSLY RESERVED BY SAMTEC, INC. THIS DOCUMENT SHALL NOT BE DISCLOSED, IN WHOLE OR PART, TO ANY UNAUTHORIZED PERSON OR ENTITY NOR REPRODUCED, TRANSFERRED OR INCORPORATED IN ANY OTHER PROJECT IN ANY MANNER WITHOUT THE EXPRESS WRITTEN CONSENT OF SAMTEC, INC.</p> |  <p>520 PARK EAST BLVD, NEW ALBANY, IN 47150<br/>         PHONE: 812-944-6733 FAX: 812-948-5047<br/>         e-Mail info@SAMTEC.com code 55322</p> |
| <p>DO NOT SCALE DRAWING</p> <p>SHEET SCALE: 1.5:1</p>   | <p>DESCRIPTION: TNCA RA PLUG, SOLDER CLAMP FOR HARBOUR LL335I CABLE</p> <p>DWG. NO. PRF04-P-C-EP-335A-RS</p> <p>BY: SAMUEL C 07/31/2020 SHEET 2 OF 3</p>  |



4. SLIDE FORWARD DIELECTRIC STOP ONTO CONTACT. AGAINST SHOULDER AS SHOWN.

IN-PROCESS 4



5. INSERT CABLE/CONTACT SUB-ASSEMBLY INTO CONNECTOR UNTIL SEATED AND TIGHTEN CLAMP NUT TO 35-45 IN-LBS.

IN-PROCESS 5

|   |  |
|---|--|
| <p><b>PROPRIETARY NOTE</b><br/>         THIS DOCUMENT CONTAINS CONFIDENTIAL AND PROPRIETARY INFORMATION AND ALL DESIGN, MANUFACTURING, REPRODUCTION, USE, PATENT RIGHTS AND SALES RIGHTS ARE EXPRESSLY RESERVED BY SAMTEC, INC. THIS DOCUMENT SHALL NOT BE DISCLOSED, IN WHOLE OR PART, TO ANY UNAUTHORIZED PERSON OR ENTITY NOR REPRODUCED, TRANSFERRED OR INCORPORATED IN ANY OTHER PROJECT IN ANY MANNER WITHOUT THE EXPRESS WRITTEN CONSENT OF SAMTEC, INC.</p> | <p><b>samtec</b><br/>         520 PARK EAST BLVD, NEW ALBANY, IN 47150<br/>         PHONE: 812-944-6733 FAX: 812-948-5047<br/>         e-Mail info@SAMTEC.com code 55322</p> |
| <p>DO NOT SCALE DRAWING</p>   | <p>DESCRIPTION: TNCA RA PLUG, SOLDER CLAMP FOR HARBOUR LL335I CABLE</p>  |
| <p>SHEET SCALE: 1.5:1</p>   | <p>DWG. NO. PRF04-P-C-EP-335A-RS</p>   |
| <p></p>   | <p>BY: SAMUEL C 07/31/2020 SHEET 3 OF 3</p>  |