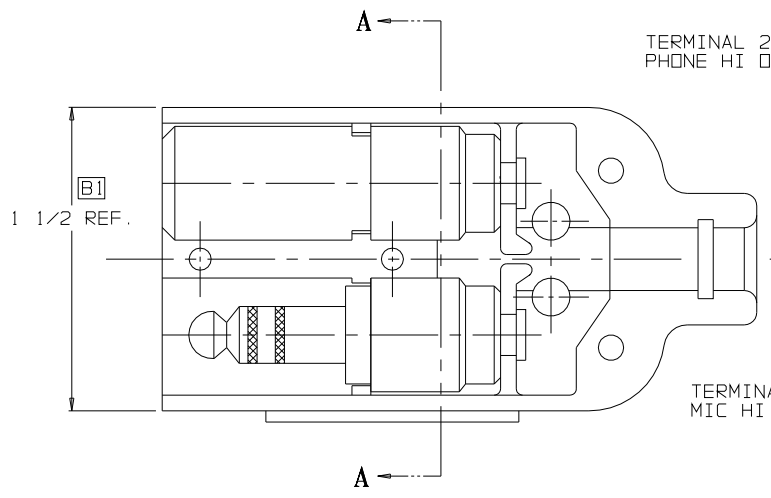
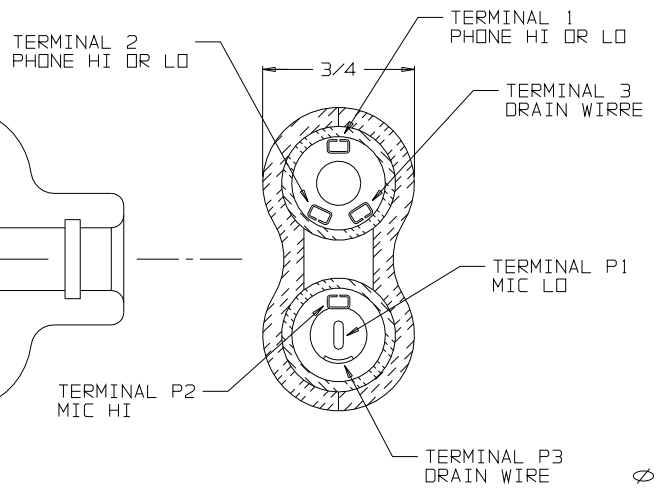


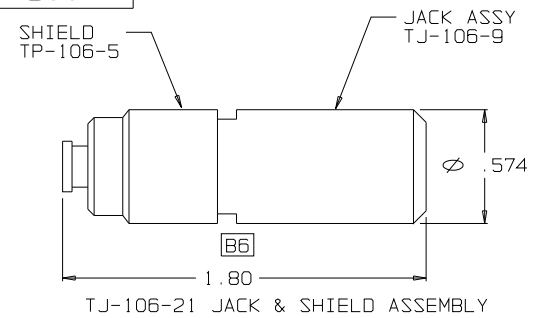
C TJ-106



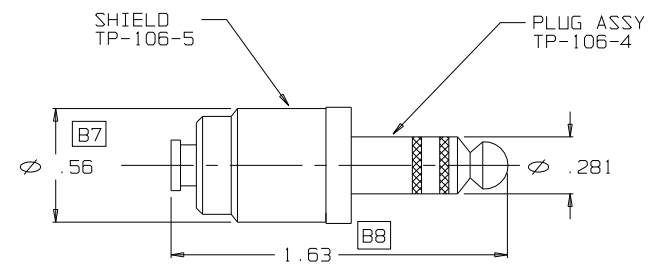
VIEW WITH HALF SHELL REMOVED



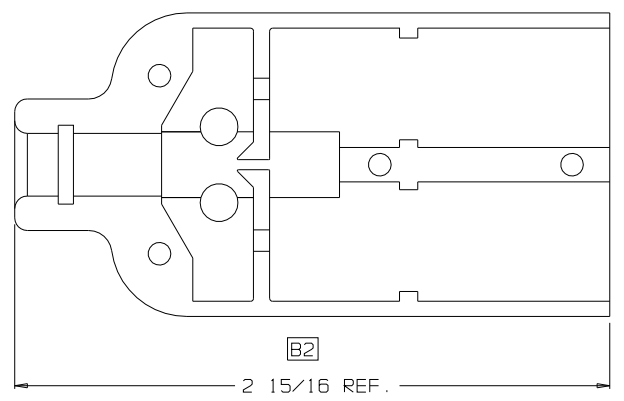
SECTION A-A



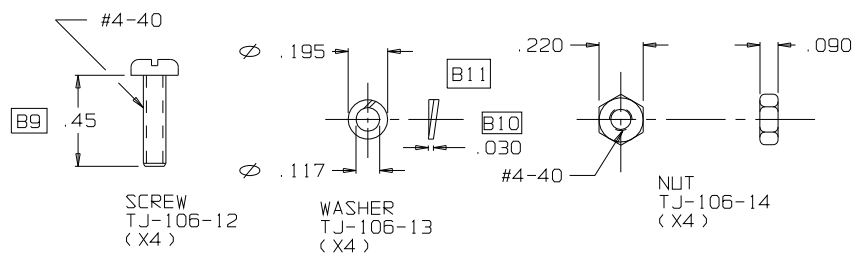
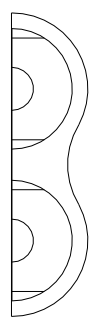
TJ-106-21 JACK & SHIELD ASSEMBLY



TP-106-10 PLUG & SHIELD ASSEMBLY



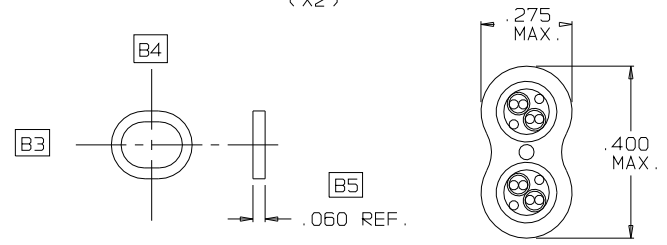
SHELL, HALF
TJ-106-11
(X2)



SCREW
TJ-106-12
(X4)

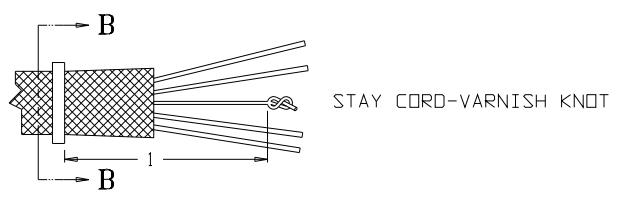
WASHER
TJ-106-13
(X4)

NUT
TJ-106-14
(X4)



RING, STRAIN RELIEF
TJ-106-10A

SECTION B-B
STRAIN RELIEF
CLAMP TJ-106-10A
AFTER CRIMPING
SCALE: 4:1



STAY CORD-VARNISH KNOT

THIS DOCUMENT CONTAINS PROPRIETARY INFORMATION OF NEXUS, INCORPORATED AND SUCH INFORMATION MAY NOT BE DISCLOSED TO OTHERS FOR ANY PURPOSE OR USED FOR ANY PURPOSE WITHOUT THE WRITTEN CONSENT OF NEXUS.

DWN. BY EWT		DATE 8/3/01	MATERIAL _____	
CHECKED BY _____		DATE _____	FINISH _____	
APPR. BY _____		DATE _____	WEIGHT _____	SCALE 2:1
UNLESS OTHERWISE SPECIFIED DIMENSIONS ARE IN INCHES TOLERANCES ON FRACTIONS DECIMALS ANGLES		TITLE JACK-TELEPHONE-BIAXIAL SHIELDED (6) CONDUCTOR		NEXUS STAMFORD, CONN SIZE DWG. NO. C TJ-106
LET. _____	REVISION _____	CN # 031	DATE 11/29/09	