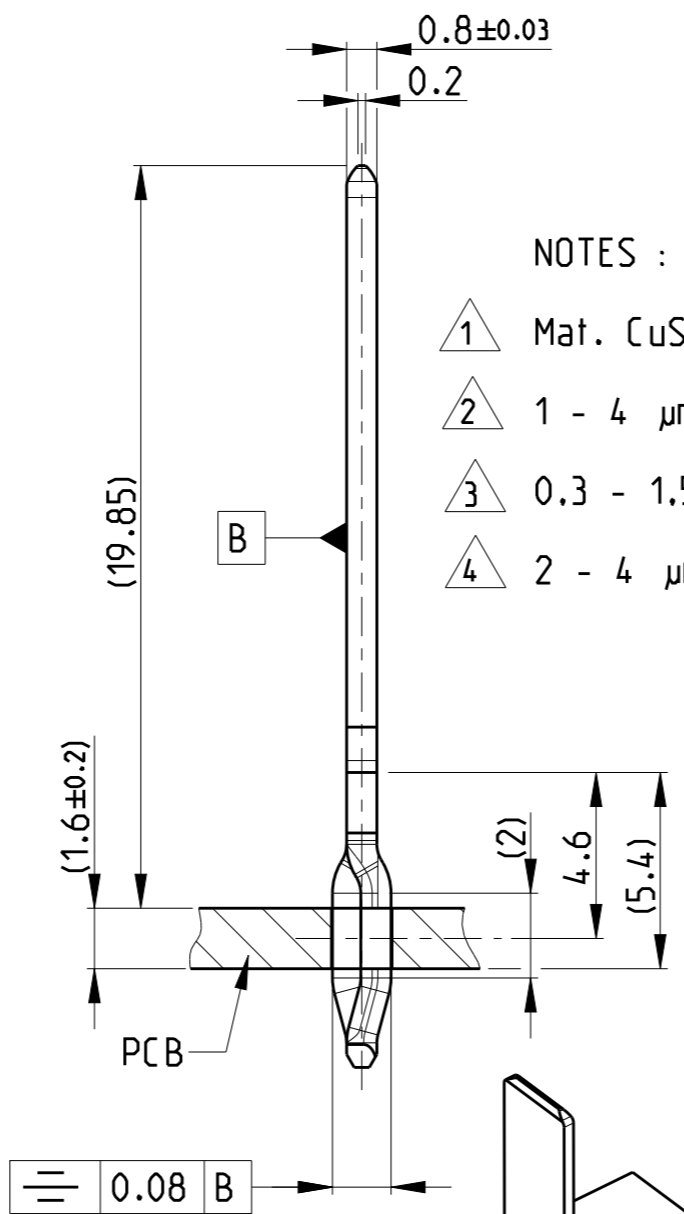
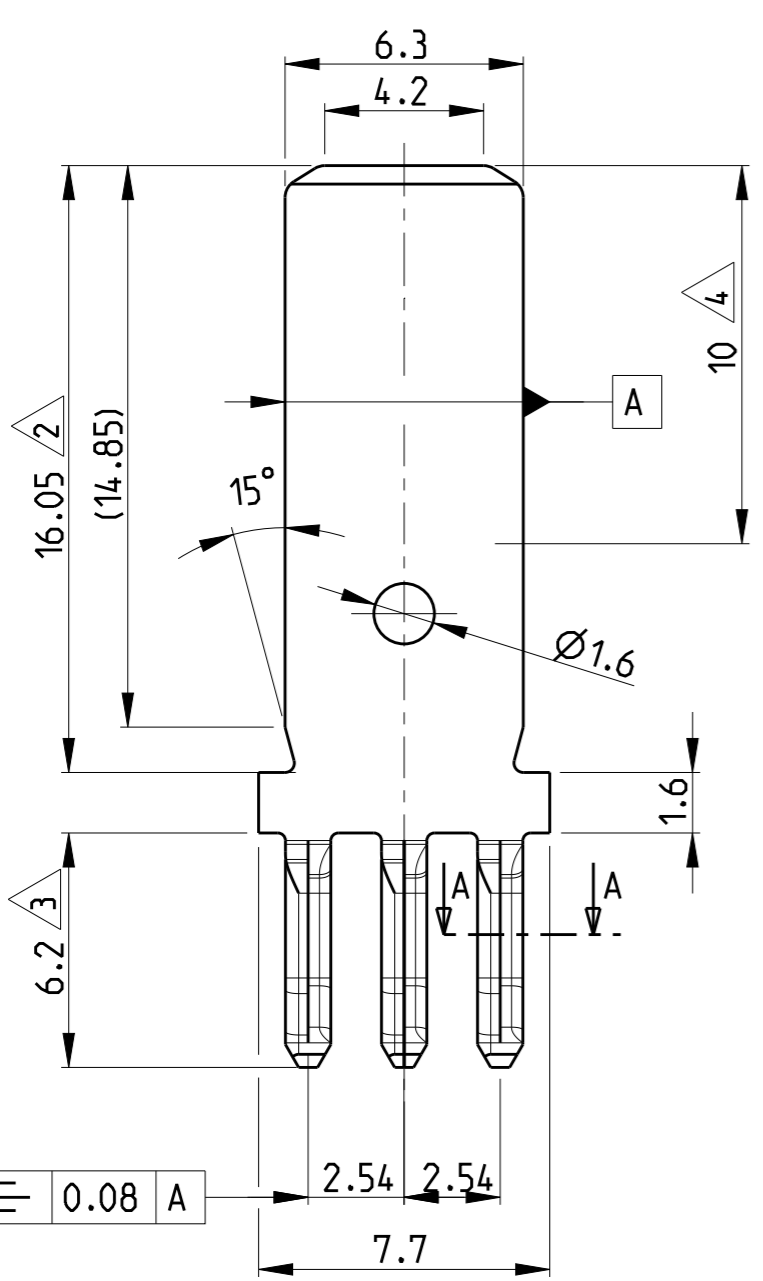


THIS DRAWING IS UNPUBLISHED  
 RELEASED FOR PUBLICATION  
 2009  
 © COPYRIGHT 2009 BY - ALL RIGHTS RESERVED.

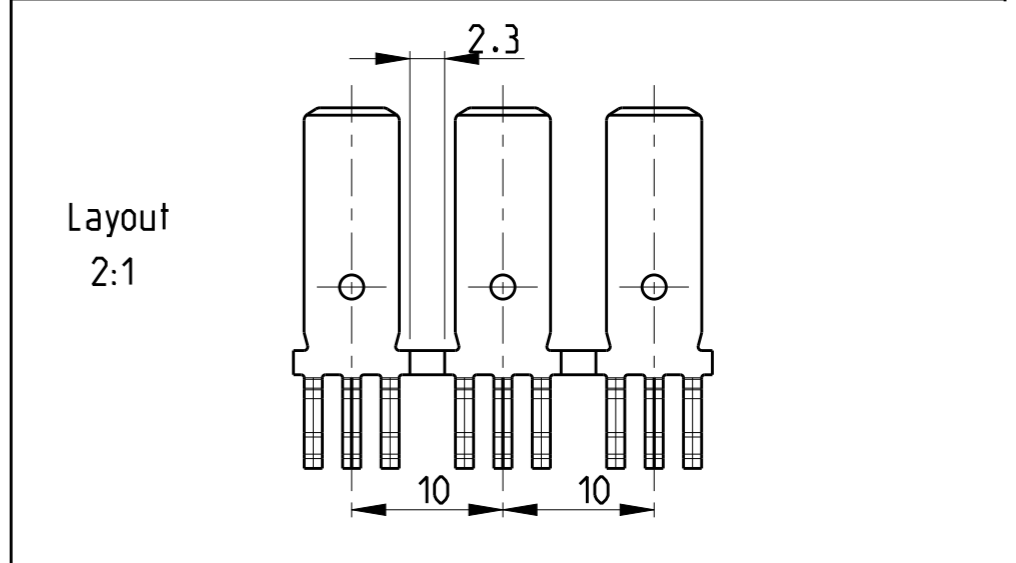
REVISIONS				
P	LTR	DESCRIPTION	DATE	APVD
B2		ECR-09-015458	10-JULY-09	PKS MW
B3		PN 1740723-4 ADDED AS PRELIMINARY	29OCT2013	PKS RRP
B4		REVISED PER ECR-19-015056	01OCT2019	BDA DH



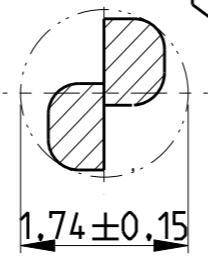
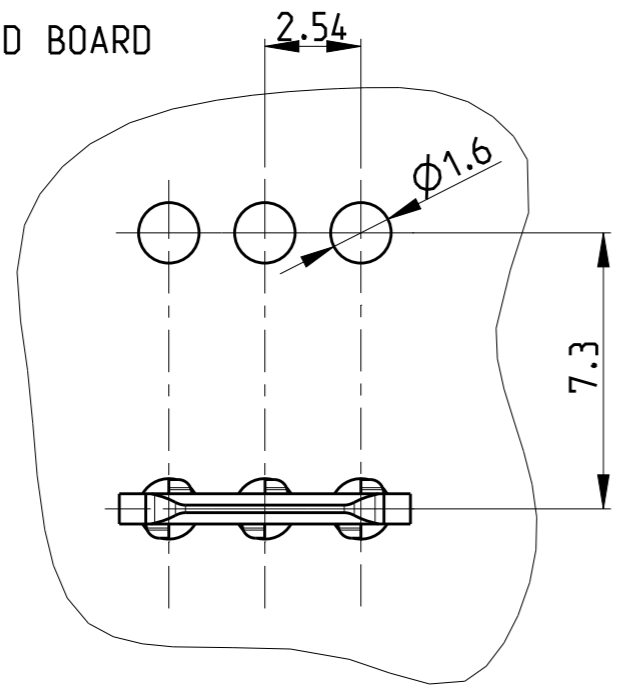
NOTES :

- 1 Mat. CuSn / THICKNESS 0.8 mm
- 2 1 - 4 µm Sn OVER NICKEL.
- 3 0.3 - 1.5 µm Sn OVER NICKEL.
- 4 2 - 4 µm Ag OVER NICKEL.

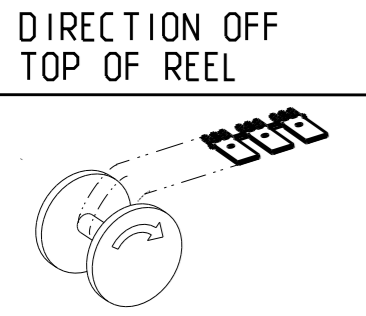
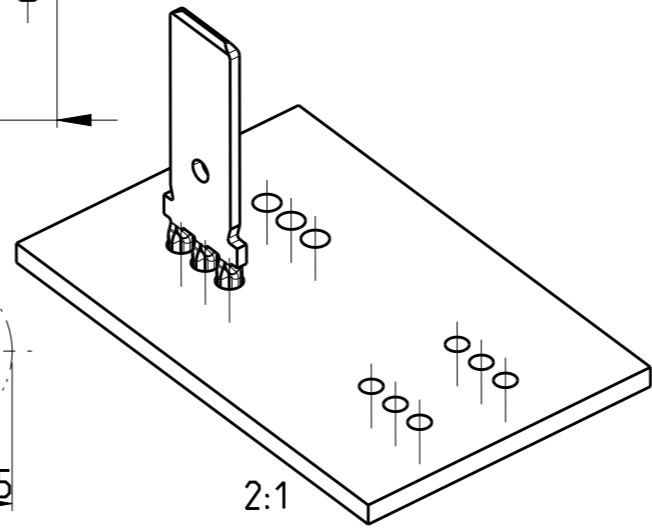
P.C.B. HOLE DIM. ACTION PIN  
 DRILLED HOLE : 1.6 ± 0.025 mm  
 FIN HOLE : 1.47 ± 0.07 mm  
 Cu - thickness : 0.025 to 0.075 mm  
 Sn - thickness : 0.0008 to 0.0012 mm or  
 Sn - thickness : 0.004 to 0.010



RECOMMENDED BOARD LAYOUT



A-A



PN 0-1740723-2 &  
 PN 0-1740723-3

PRELIMINARY	1740723-5	1	Cu Sn	4	3	BOARD REEL
PRELIMINARY	1740723-4	1	Cu Sn	4	3	REUSED PLASTIC REEL
	1740723-3	A	Cu Sn	2	3	REUSED PLASTIC REEL
	1740723-2	B	Cu Sn	2	3	BOARD REEL
PART-NO	REV.	MATERIAL	SURFACE	REEL		

THIS DRAWING IS A CONTROLLED DOCUMENT.		DWN SENTHIL 01-JUN-09
		CHK RAJENDRA 01-JUN-09
		APVD M.WESTEN 01-JUN-09
		PRODUCT SPEC 108-94044
		APPLICATION SPEC 114-18789
		WEIGHT -
Customer Drawing		

TE Connectivity		NAME	
		TAB WITH ACTION-PIN TAB MIT ACTION-PIN	
SIZE	CAGE CODE	DRAWING NO	RESTRICTED TO
A3	00779	C-1740723	-
SCALE 5:1		SHEET 1 OF 1	REV B4