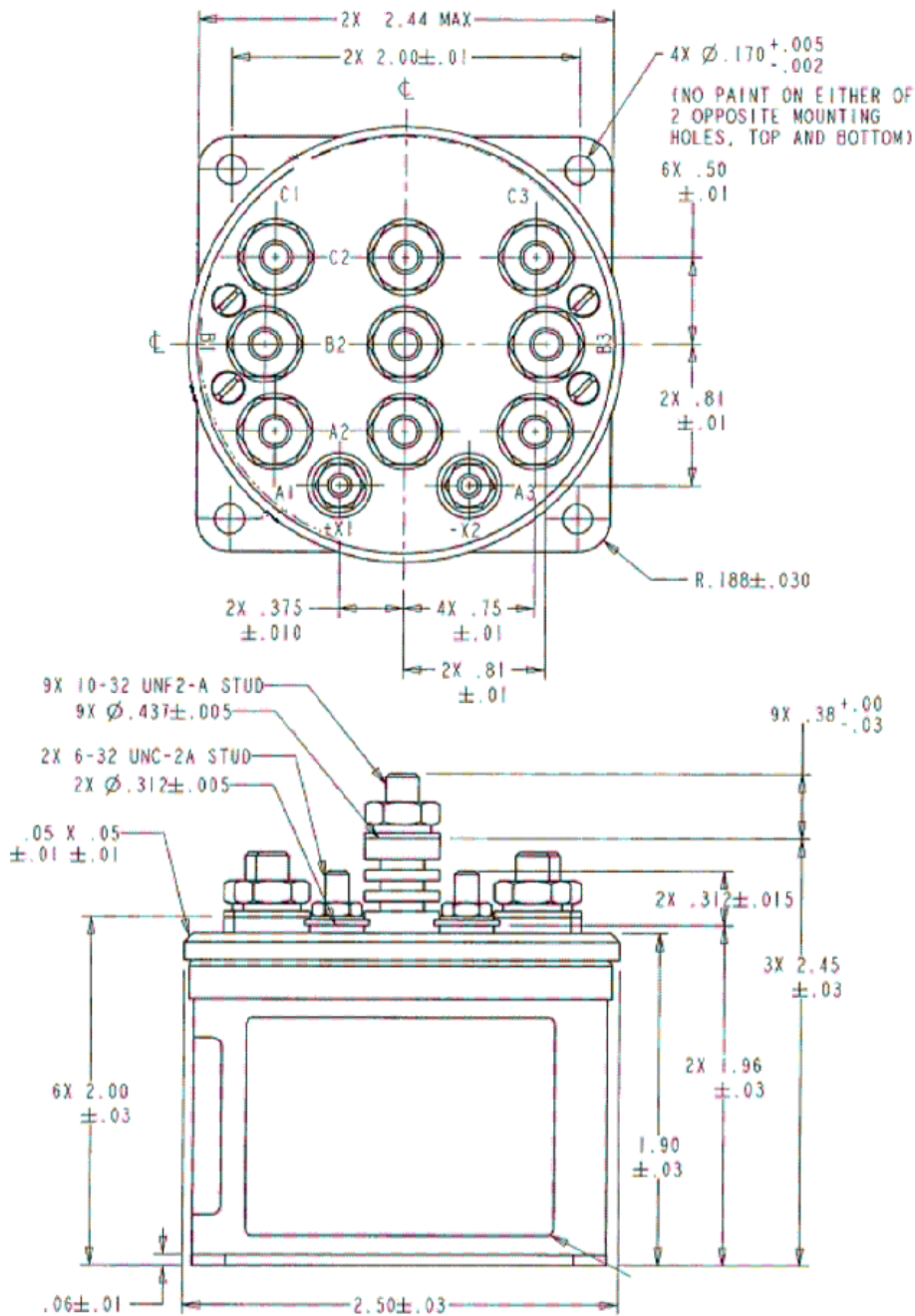


D7CF  
 STARTER CONTACTOR-3PDT  
 245 AMP, 28 VDC

REVISIONS

REV.	ECO	DESCRIPTION	DATE	APPROVED
C	15-005578	ADD ITEM 10, HS LABEL	10APR2015	ACH



INSTALLATION TORQUE  
 6-32 = 5.4 TO 6.6 IN-LBS  
 10-32 = 18.0 TO 20.0 IN-LBS

ALL DIMENSIONS ARE IN INCHES

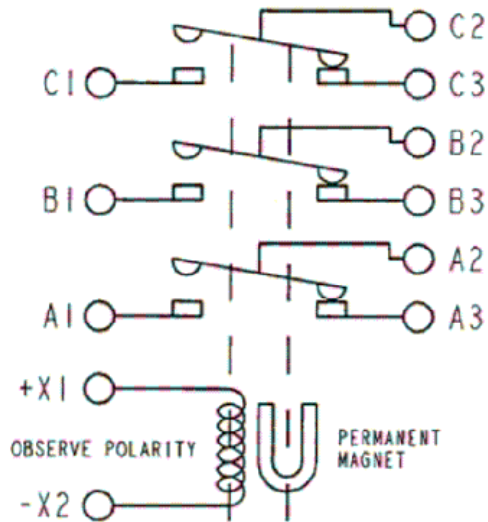
**STE**  
 TE CONNECTIVITY  
 175 N, DIAMOND STREET MANSFIELD,  
 OHIO 44902

TITLE STARTER CONTACTOR-3PDT 245 AMP, 28 VDC	
TE P.N. 5-1616982-4	DWG NO. D7CF
CAGE CODE 74063	SCALE NONE
DS DATA SHEET	SHEET 1 OF 2
REV C	REV C

GENERAL SPECIFICATION

CONSTRUCTION	GASKET SEALED
CONFIGURATION	3PDT
CONTACT RATING	245 A, 28 VDC CARRY ONLY INTERMITTENT DUTY 30 SEC PER THROW, THEN 5 MIN OFF
COIL RATING	28 VDC / 126 OHMS $\pm 10\%$
MIN OPER AMBIENT TEMP	-55° C
MAX OPER AMBIENT TEMP	+85° C
ELECTRICAL LIFE	30,000 CYCLES
WEIGHT	14 OZ MAX

SCHEMATIC



**TE**  
TE CONNECTIVITY  
175 N, DIAMOND STREET MANSFIELD,  
OHIO 44902

TITLE

STARTER CONTACTOR-3PDT  
245 AMP, 28 VDC

TE P.N.

5-1616982-4

DWG NO.

D7CF

DS

DATA SHEET

CAGE CODE  
74063

SCALE  
NONE

SHEET  
2 OF 2

REV  
C