

Amphenol
FCi

© 2016 AFci

spec ref	-	dr	Feng Zheng	2016/11/15	projection	MM	size	A2	scale	6:1
tolerance std	ISO 406 ISO 1101	eng	Feng Zheng	2016/12/08			ecn no	-	rel level	Released
TOLERANCES UNLESS OTHERWISE SPECIFIED		chr	Terris Liu	2016/12/08						
surface	ISO 1302	appr	Pei-Ming Zheng	2016/12/08	product family		dwg no	10141854	rev	A
							cat. no.	Product - Customer Drw	sheet 1 of 4	

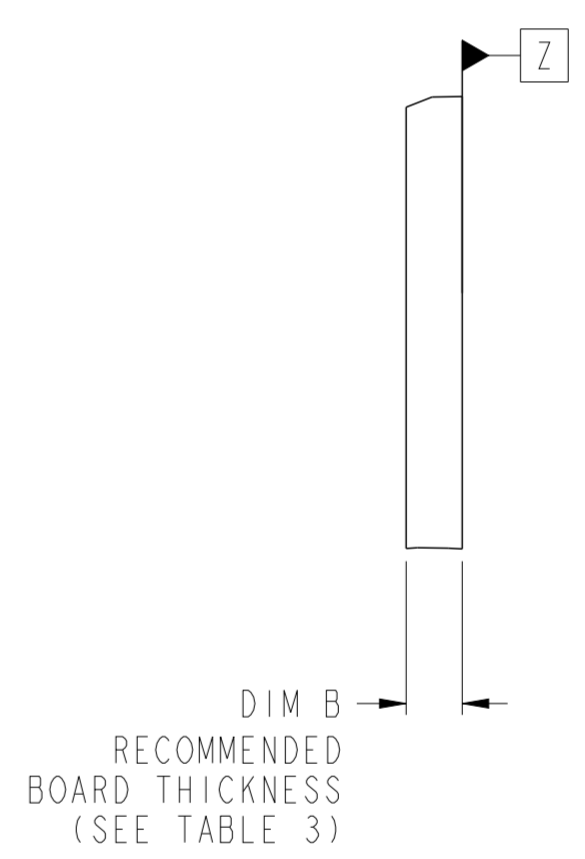
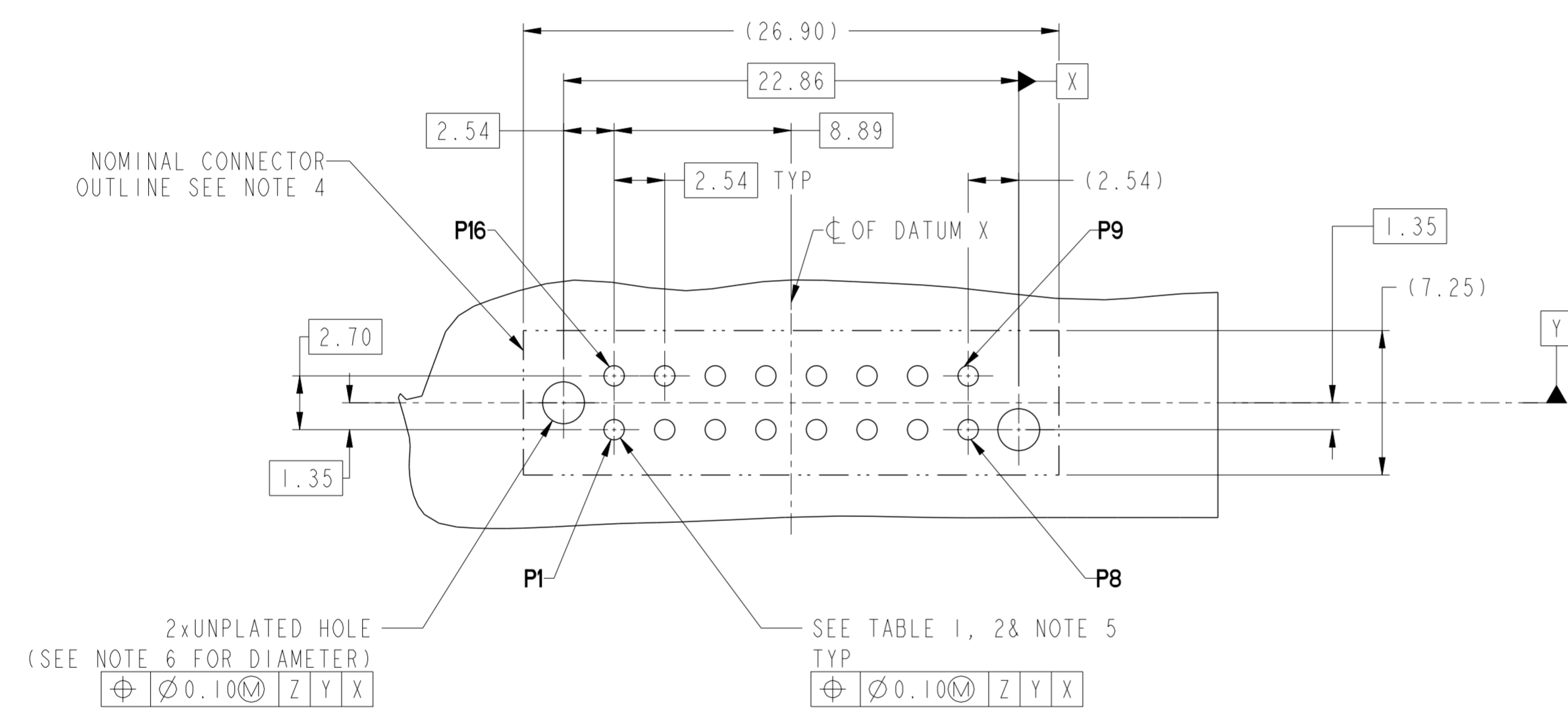
PDS: Rev :A

STATUS:Released

Printed: Dec 08, 2016

CONTACT TYPE	TOP LAYER DESCRIPTION	TABLE 1 (HPCE / SOLDER TAILS) PLATED THROUGH-HOLE REQUIREMENTS				
		DRILLED HOLE DIAMETER	COPPER THICKNESS	TIN-LEAD THICKNESS	TIN THICKNESS	FINISHED HOLE DIAMETER
POWER & SIGNAL	TIN-LEAD	1.10-1.16 (1.15 DRILL)	0.025 - 0.050	0.005 - 0.015	--	0.94 - 1.10
	IMMERSION TIN	1.10-1.16 (1.15 DRILL)	0.025 - 0.050	--	0.9 - 1.5um	0.94 - 1.10
	COPPER	1.10-1.16 (1.15 DRILL)	0.025 - 0.050	--	--	0.94 - 1.10

CONTACT TYPE	TOP LAYER DESCRIPTION	TABLE 2 (HPCE / PRESS-FIT TAILS) PLATED THROUGH-HOLE REQUIREMENTS				
		DRILLED HOLE DIAMETER	COPPER THICKNESS	TIN-LEAD THICKNESS	TIN THICKNESS	FINISHED HOLE DIAMETER
POWER & SIGNAL	TIN-LEAD	0.81-0.86 (0.85 DRILL)	0.025 - 0.050	0.005 - 0.015	--	0.65 - 0.80
	IMMERSION TIN	0.81-0.86 (0.85 DRILL)	0.025 - 0.050	--	0.9 - 1.5um	0.70 - 0.80
	COPPER	0.81-0.86 (0.85 DRILL)	0.025 - 0.050	--	--	0.70 - 0.80



Amphenol FCI

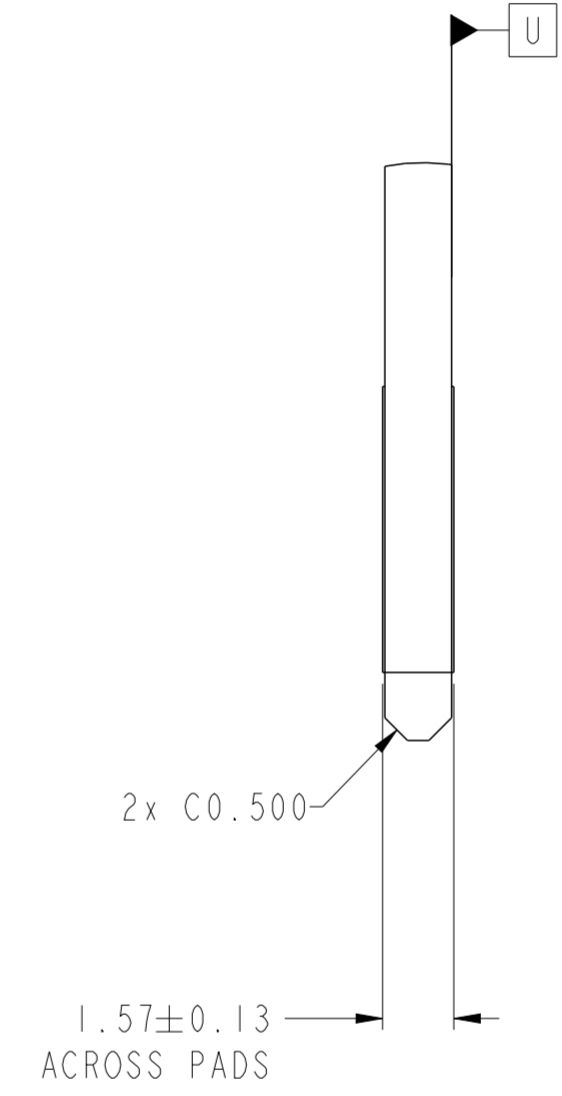
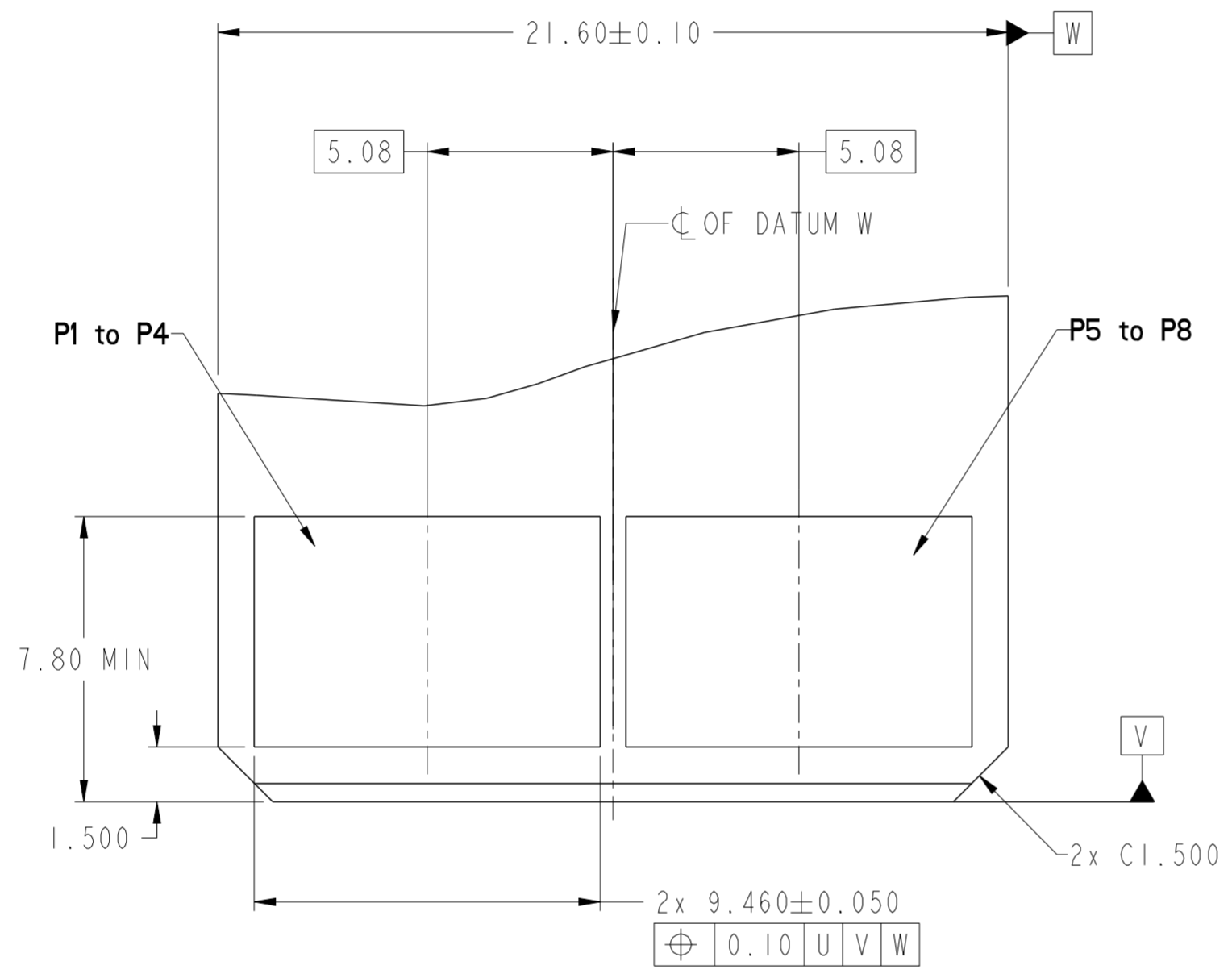
© 2016 AFCI

spec ref	-	dr	Feng Zheng	2016/11/15	projection	MM	size	A2	scale	4:1
tolerance std	ISO 406 ISO 1101	eng	Feng Zheng	2016/12/08			ecn no	-	rel level	Released
TOLERANCES UNLESS OTHERWISE SPECIFIED		chr	Terris Liu	2016/12/08						
surface	linear	0.X	± 0.5		product family HPCE VT RECT 4HP FOR LOW HF	cat. no. Product - Customer Drw	dwg no 10141854	rev A	sheet 2 of 4	
		0.XX	± 0.25							
		0.XXX	± 0.10							
	angular	0°	$\pm 2^\circ$							

PDS: Rev :A

STATUS:Released

Printed: Dec 08, 2016



RECOMMENDED MATING BOARD LAYOUT
DIMENSION TOLERANCE IS ±0.05MM

Amphenol
FCi

© 2016 AFci

spec ref	-	dr	Feng Zheng	2016/11/15	projection	MM	size	A2	scale	6:1
tolerance std	ISO 406 ISO 1101	eng	Feng Zheng	2016/12/08			ecn no	-	rel level	Released
TOLERANCES UNLESS OTHERWISE SPECIFIED		chr	Terris Liu	2016/12/08						
		appr	Pai-Ming Zheng	2016/12/08						
surface	ISO 1302	linear	0.X	±0.5			title HPCE VT RECT 4HP FOR LOW HF		dwg no 10141854	rev A
		angular	0°	±2°	cat. no.		Product - Customer Drw		sheet 3 of 4	

PDS: Rev :A

STATUS:Released

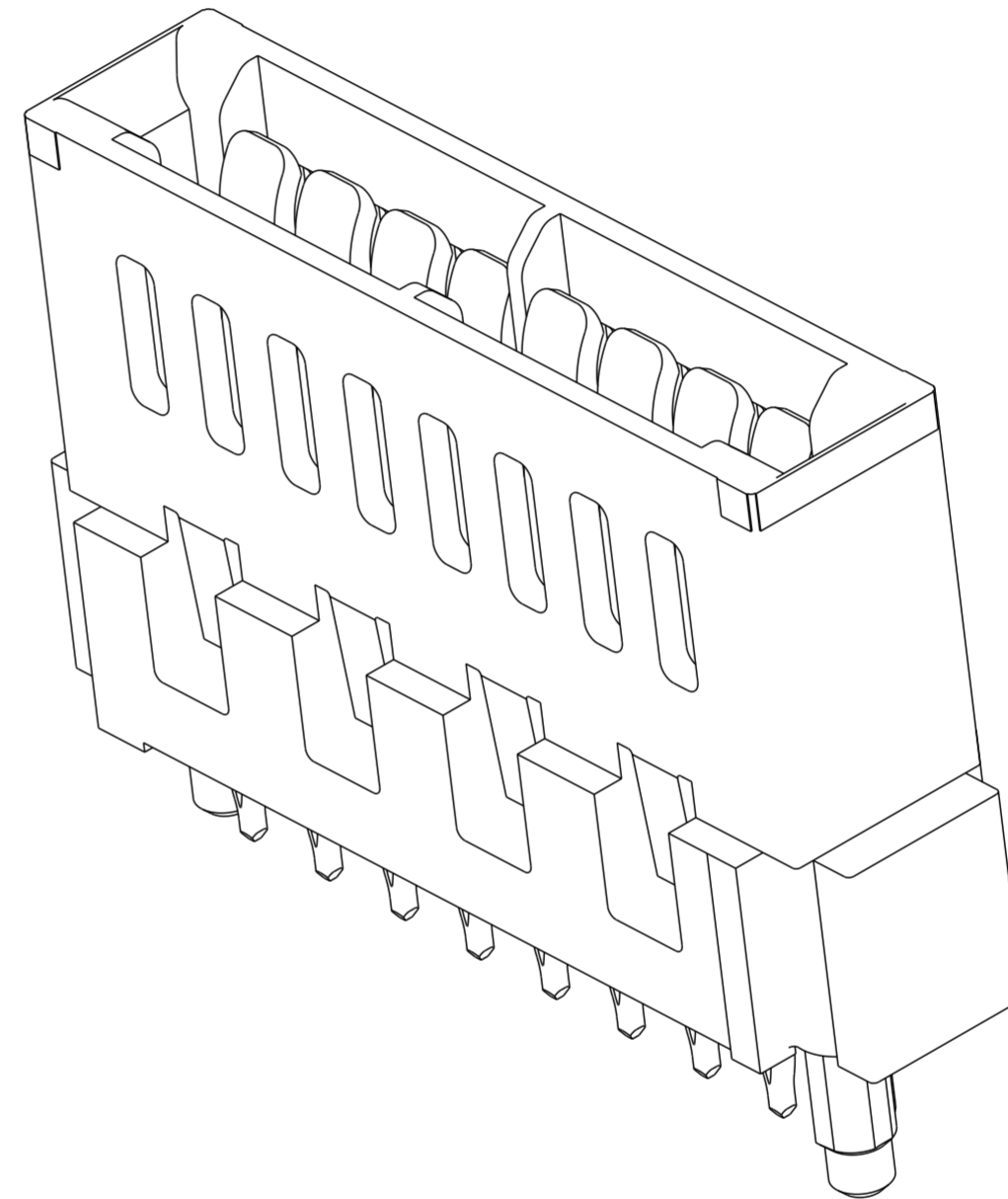
Printed: Dec 08, 2016

HPCE PART NUMBER (TABLE 3)

PART NUMBER	TAIL TYPE	ORIENTATION KEY	DIM A TAIL LENGTH	DIM B RECOMMENDED BOARD THICKNESS
10141854-001HLF	SOLDER	NO	3.17 ±0.25	2.36±0.18
10141854-002HLF	PRESS-FIT	NO	3.17 ±0.25	1.57 MIN

NOTES:

1. PRODUCT MARK:
PART NUMBER AND DATE CODE TO BE MARKED ON THIS SURFACE .
THE MARK CAN BE OMITTED IF THERE IS NOT ENOUGH SPACE ON THIS SURFACE.
2. MATERIALS:
HOUSING : HIGH TEMPERATURE THERMOPLASTIC WITH GLASS FIBER, UL94V-0, BLACK.
CONTACT : COPPER ALLOY.
3. CONTACT FINISH REF: GS-12-604 SECTION 5.2.
4. DENOTES CONNECTOR KEEP OUT ZONE.
5. ALL HOLE DIAMETERS ARE FINISHED HOLE SIZES.
6. MOUNTING HOLES ARE UNPLATED
 $\varnothing 2.40 \pm 0.1$ FOR PRESS FIT TAILS
 $\varnothing 2.18 \pm 0.03$ FOR SOLDER TAILS
7. THE HOUSING WILL WITHSTAND EXPOSURE TO 245°C PEAK TEMPERATURE FOR 10 SECONDS IN A WAVE SOLDER APPLICATION.
8. THIS PRODUCT MEETS EUROPEAN UNION DIRECTIVES AND OTHER COUNTRY REGULATIONS AS DESCRIBED IN GS-47-0004.
9. PRODUCT SPECIFICATION : GS-12-604.
APPLICATION SPECIFICATION : GS-20-128.
PACKAGING SPECIFICATION: GS-14-937.
10. PRESS FIT APPLICATION TOOL DRAWING: 10119453.



spec ref	-	dr	Feng Zheng	2016/11/15	projection	MM	size	A2	scale	6:1	
tolerance std	ISO 406 ISO 1101	eng	Feng Zheng	2016/12/08			ecn no	-			
TOLERANCES UNLESS OTHERWISE SPECIFIED		chr	Terris Liu	2016/12/08			rel level	Released			
surface	ISO 1302	appr	Pai-Ming Zheng	2016/12/08			product family			cat. no.	Product - Customer Drw
		linear	0.X	±0.5			title	HPCE VT RECT		rev	A
			0.XX	±0.25			dwg no	10141854			
			0.XXX	±0.10							
		angular	0°	±2°							