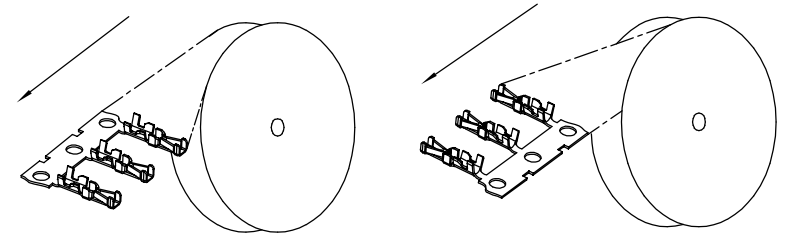


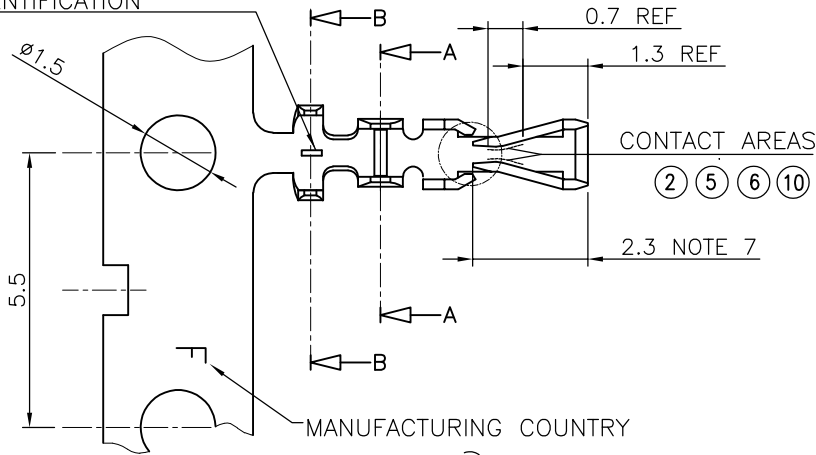
| PRODUCT NO.   | FINISH  | REELING DIRECTION |
|---------------|---------|-------------------|
| 77138-001LF   | NOTE 2  | FIG.1             |
| 77138-101LF   | NOTE 6  | FIG.1             |
| 77138-101VLF  | NOTE 6  | FIG.1             |
| 77138-201LF   | NOTE 5  | FIG.1             |
| 77138-001RELF | NOTE 2  | FIG.2             |
| 77138-101RELF | NOTE 6  | FIG.2             |
| 77138-T01LF   | NOTE 10 | FIG.1             |



UNREELING DIRECTION  
FIG.1

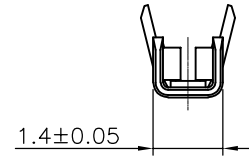
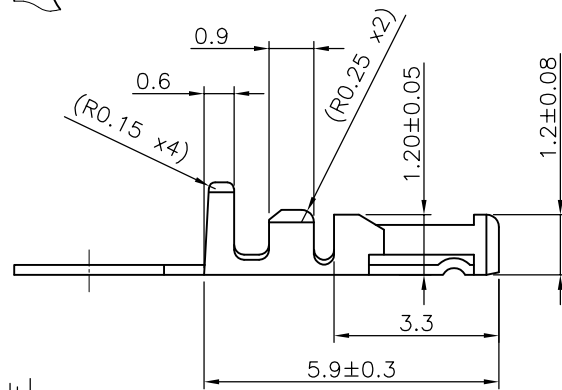
UNREELING DIRECTION  
FIG.2

PROCESS IDENTIFICATION



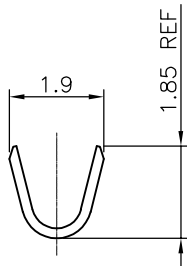
CONTACT AREAS

② ⑤ ⑥ ⑩

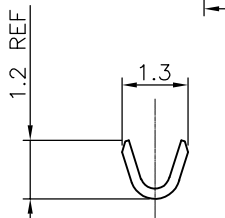


NOTES

- 1 MATERIAL : PHOSPHOR BRONZE
- ② FINISH : SELECTIVE GOLD PLATING 0.2μm MIN (CONTACT AREA) OVER 1.27μm Ni MIN
- 3 WIRE RANGE : AWG 26-30
- 4 GENERAL TOLERANCE : ±0.25
- ⑤ FINISH : SELECTIVE GOLD PLATING 0.5μm MIN (CONTACT AREA) OVER 1.27μm Ni MIN
- ⑥ FINISH : SELECTIVE GOLD PLATING 0.76μm MIN (CONTACT AREA) OVER 1.27μm Ni MIN
- 7 REMAINDER : - GOLD FLASH FOR ② ⑤ ⑥  
- 2.0-5.0μm TIN FOR ⑩  
α- UNDERPLATING 1.27μm Ni MIN ALL OVER
- 8 THIS PRODUCT MEETS EUROPEAN UNION DIRECTIVES AND OTHER COUNTRY REGULATIONS AS DESCRIBED IN GS-47-0004
- 9 CRIMP SPECIFICATION AS PER GS-20-058
- ⑩ FINISH : 2.0-5.0μm TIN ON CONTACT AREA. UNDERPLATING 1.27μm Ni MIN ALL OVER
- 11 PRODUCT SPECIFICATION : GS-12-415



SECTION B-B



SECTION A-A

| mat'l. code |                |     |          | surface                               | tolerance        | projection | product family           |
|-------------|----------------|-----|----------|---------------------------------------|------------------|------------|--------------------------|
| SEE NOTES   |                |     |          | ISO 1302                              | ISO 406 ISO 1101 | ⊕          | MINITEK                  |
| ltr         | ecn no         | dr  | date     | tolerances unless otherwise specified |                  | mm         | title                    |
| S           | F-22846        | AMA | 15.12.21 | angles                                | .x ±0.25         | ← mm →     | CTW MINITEK<br>AWG 26-30 |
| T           | F-39336        | DDE | 20.12.15 | linear                                | .xx ±0.15        |            |                          |
| U           | F-42417        | DDE | 21.09.22 |                                       | .xxx ±0.05       |            |                          |
|             |                |     |          | dr                                    | L.MULIN          | 08.01.28   | dwg no                   |
|             |                |     |          | enfr                                  | J.COMPAGNON      | 08.01.28   | sheet 1 of 1             |
|             |                |     |          | chr                                   |                  |            | size                     |
|             |                |     |          | appd                                  | J.CO             | 08.05.05   | 77138                    |
|             |                |     |          |                                       |                  |            | A3                       |
|             |                |     |          |                                       |                  |            | type                     |
|             |                |     |          |                                       |                  |            | CUSTOMER Drawing         |
| sheet index | revision sheet |     |          |                                       |                  |            |                          |



Copyright FCI