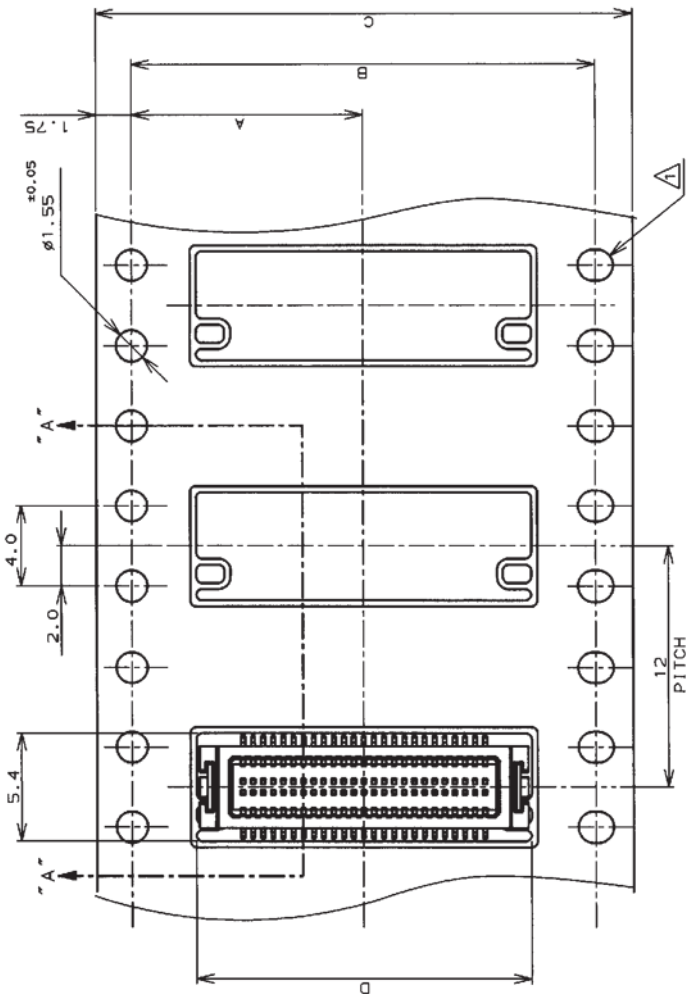


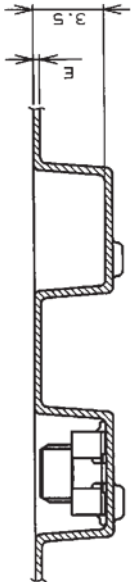
THIS DRAWING IS UNPUBLISHED.  
 © COPYRIGHT 19 BY AMP INCORPORATED. ALL RIGHTS RESERVED.

REVOLUTIONS		REVISIONS	
P	LYR	DESCRIPTION	DATE
0	RELEASED	FJ00-0061-97	2/28/97
A	REVISED	FJ00-1014-98	6/5/98

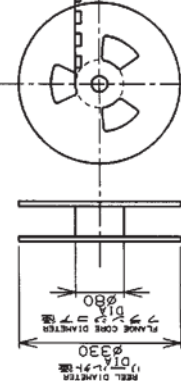


注記:  
 指示穴は 60,70極品のみ適用。  
 NOTE:  
 THESE HOLES ARE APPLIED TO 60 AND 70POS. ONLY.

引出し方向  
 TOP OF REEL



カバレッジリーフ部  
 外周一周  
 HEEDING THE COVER TAPE  
 AROUND THE OUTER  
 PERIPHERY IN  
 A TURN.  
 剥離角度, 165°-180°  
 PEELING ANGLE.



WITH PRODUCT CHARGE  
 空部  
 APPROX 300mm 程度  
 WITHOUT CHARGE

W <sub>2</sub>	W <sub>1</sub>	E	D	C	B	A	数量 (ヶ)	種類 (ヶ)	コネクタ型番	リール型番	TAPING P/N
37.5	33.5	0.4	21.9	32	28.4	14.2	70	7-	-0	7-	-0
37.5	33.5	0.38	19.1	32	28.4	14.2	60	6-	-0	6-	-0
29.5	25.5	0.38	16.6	24	11.5	10.00	50	5-917797-0	5-316289-0	コネクタ型番	リール型番

HANDLING AND OPERATION 取扱説明書	411-5808
WIRE RANGE ワイヤ電圧範囲	
DATE 日付	2/28/97
CHK 検査	Y. NAKAZAWA
APVD 承認	K. ASAKAWA
PRODUCT SPEC 製品仕様	108-5496
EXPLANTION SPEC 取付説明書	
WEIGHT 重量	
CUSTOMER DRAWING	
SIZE (CAGE CODE) 寸法 (ケージコード)	A3 00779
RESTRICTED TO	
SCALE 尺貫	1 OF 3
REV	A

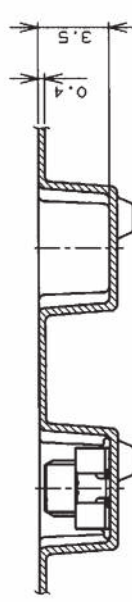
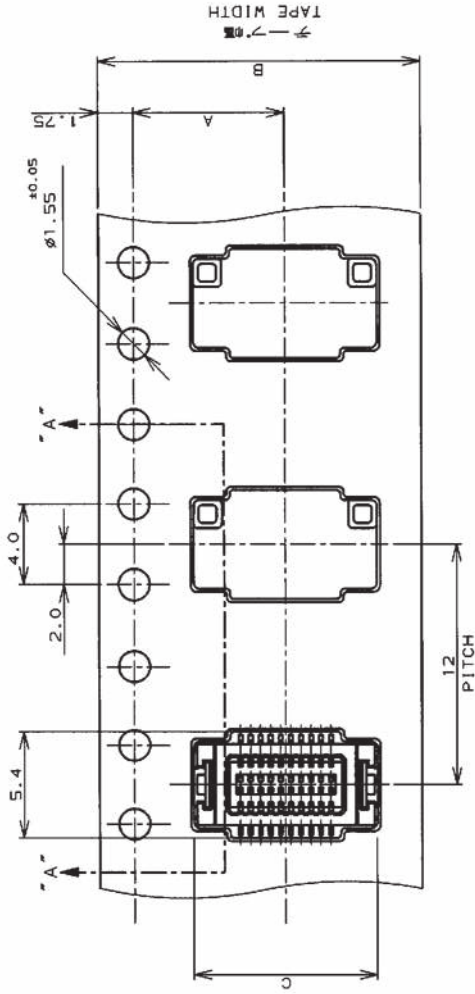
**AMP**

ON TAPING (EMBOSSED)  
 0.5mm PITCH Fine Mate CONN.  
 RECEPTACLE ASSEMBLY

製造元  
 Kawasaki, Japan  
 株式会社 川崎製作所  
 1-1-1, Kawasaki-ku, Kawasaki-shi, Kanagawa-ken, Japan

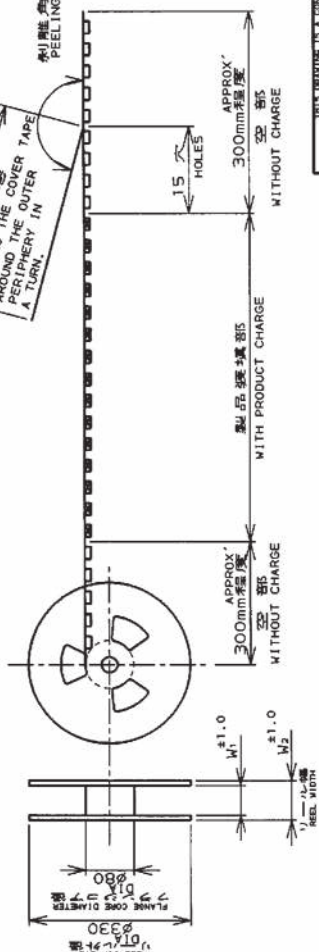
参考図面

THIS DRAWING IS UNPUBLISHED. BY AMP INCORPORATED. ALL RIGHTS RESERVED.		RELEASED FOR PUBLICATION		19		
REVISIONS						
P	LTR	DESCRIPTION	ECN	DATE	DRN	APVD
		SEE SHEET 1 OF 3				



引出し方向  
TOP OF REEL

カッターリフト部  
外周一部  
WEEDING THE COPPER TAPE  
AROUND THE OUTER  
PERIPHERY IN  
A TURN.  
剝離角度, 155°-180°  
PEELING ANGLE.



TOLERANCES UNLESS OTHERWISE SPECIFIED  
単位: ㎜

一般公差	100	±0.2
	30	±0.25
	100	±0.3
		ANGLE: ±5

FINISH  
仕上

MATERIAL  
材料

2.0	7.5	1000	20	2-917797-0	2-316289-0
W <sub>2</sub>	W <sub>1</sub>	C	B	A	20
WIRE RANGE					
INSULATION DIA					
AMP					
ON TAPING (EMBOSS)					
0.5mm PITCH FINE MATE CONN.					
RECEPTACLE ASSEMBLY					
SIZE CASE CODE DRAWING NO					
A3 00779 C-316289					
RESTRICTED TO					
CUSTOMER DRAWING					
SCALE					
SHEET 2 OF 3					
REV A					

STANDARD AND OPERATION INSTRUCTION SHEET  
取組説明書 411-5808

OWN: Y. NAKAZAWA 2/28/97  
CHK: K. ASAKAWA 4/17/97

NAME: S. SAKAKUBA  
製品規格: 108-5496  
取付適用規格: 108-5496

APPLICATION SPEC

INSULATION DIA

製造外注

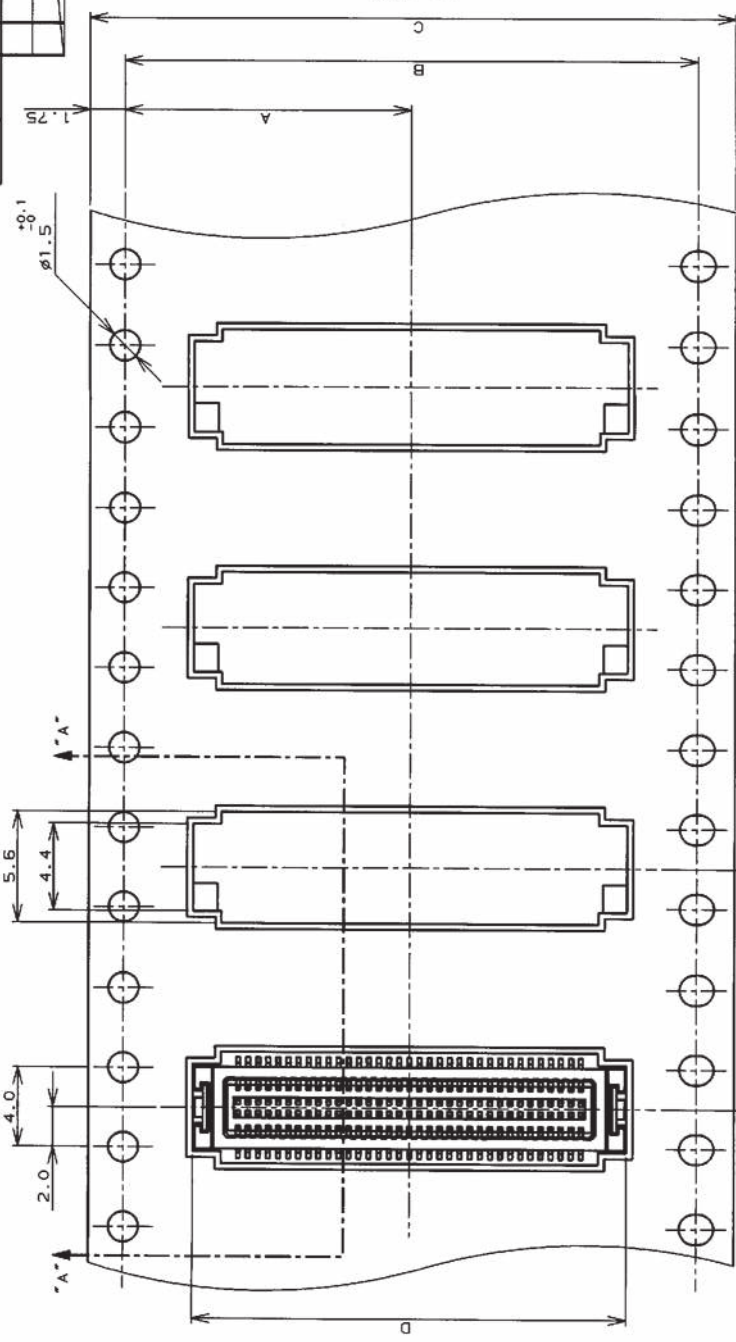
リール巻  
コネクタ型番  
TAPING P/N

株式会社 AMP  
Kawasaki, Japan

THIS DRAWING IS UNPUBLISHED.  
 (C) COPYRIGHT 19 BY AMP INCORPORATED. ALL RIGHTS RESERVED.

RELEASED FOR PUBLICATION  
 .19

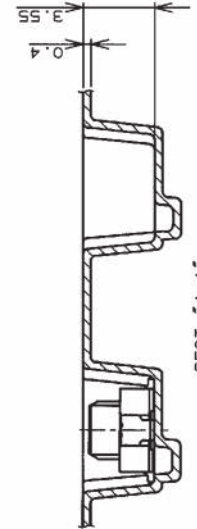
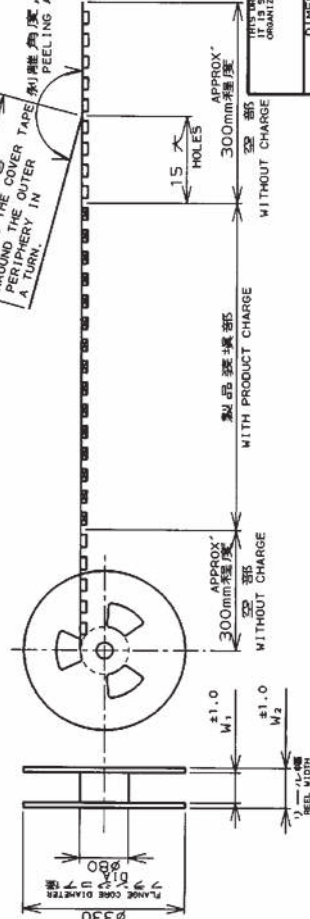
REV. NO.	DESCRIPTION	ECN	DATE	DWN	APVD
1	SEE SHEET 1 OF 3				



テープ幅  
TAPE WIDTH

引出し方向  
TOP OF REEL

カッターリフト  
引当り部  
HEEDING THE COVER TAPE  
PERIPHERY IN  
A TURN.  
剥離角度, 165°~180°  
PEELING ANGLE.



50.5	45.5	24	44	40.4	20.2	1000	80	8-917797-0	8-316289-0
W <sub>2</sub>	W <sub>1</sub>	D	C	B	A	数量 (個) QTY/PREEL	極数 POS	コネクタ型番 (シールド付) CONNECTOR P/N (W/SH)	リール型番 コネクタ型番 TAPING P/N

HANDLING AND OPERATION 取扱説明書 411-5808	INSULATION DIA 絶縁外径
DUN CHK: <i>K. Kawasaka</i> 6/19/88	NAME KAWASAKI, Japan
APPROVED CHK: <i>K. Kawasaka</i> 6/19/88	ON TAPING (EMB055) 0.5mm PITCH Fine Mate CONN. RECEPTACLE ASSEMBLY
PRODUCT SPEC 製品規格 108-5496	SIZE (TAGE CODE) 取付コード
APPLICATION SPEC 取付適用規格	A3 00779 C= 316289
TOLERANCES UNLESS OTHERWISE SPECIFIED 単位: 概 mm 一般公差 10% : ±0.2 30% : ±0.25 100% : ±0.3 ANGLE : ±3°	RESTRICTED TO A3 00779 C= 316289
FINISH 仕上	SCALE 尺数
MATERIAL 材料	SHEET OF 3
WEIGHT	CUSTOMER DRAWING

参考図面