

**NOTES:**

FILE NO.

AA-CD-805-01

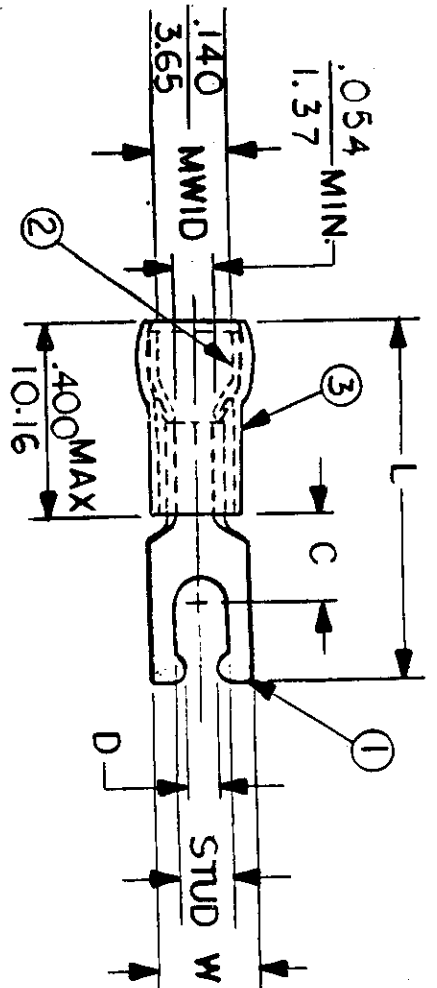
- ① MAT'L: COPPER (STOCK TKN.  $\frac{.031}{79}$ )
- ② PLATING: ELECTRO TIN (.0003 MIN)
- ③ TIN-PLATED BRASS FUNNEL FERRULE
- ④ NYLON INSULATION (COLOR CODED RED)

STUD SIZES: ( $\pm .005$ )

- 02 = .094
- 04 = .119
- 06 = .146
- 08 = .173
- 10 = .198
- 14 = .265
- 56 = .328
- 38 = .390

"UL" LISTING # E32244  
 "CSA" LISTING # 18689

WIRE SIZE: 22 - 18 AWG  
 .25 - 1.5 MM<sup>2</sup>



ALL DIMENSIONS = INCHES  
 MM

(MWID) = DENOTES MAXIMUM WIRE INSULATION DIAMETER

PART NUMBER	"W" ±.010	"C" MIN.	"L" MAX.	"D" ±.005	AVAILABLE STUD SIZES	DIMENSIONAL TOLERANCES UNLESS OTHERWISE SPECIFIED		
						FRAC.	DEC.	ANG.
AA-8190-	$\frac{.260}{6.60}$	$\frac{.235}{5.97}$	$\frac{.870}{22.10}$	$\frac{.111}{2.82}$	06			
AA-8191-	$\frac{.290}{7.37}$	$\frac{.235}{5.97}$	$\frac{.880}{22.35}$	$\frac{.137}{3.48}$	08			
AA-8192-	$\frac{.328}{8.33}$	$\frac{.235}{5.97}$	$\frac{.930}{23.62}$	$\frac{.163}{4.14}$	10			

REFERENCE	SCALE:	NTS	DATE	TITLE:
	DRWN. BY:	JJ	11.8.84	SNAP SPADE TONGUE TERMINAL AVIKRIMP 800-SERIES
	CHKD. BY:	GZ	11.14.84	
	APPRD. BY:			

DWG. NO.	A	CUSTOMER DWG
----------	---	--------------

**ETC** mox  
INCORPORATED