

10 9 8 7 6 5 4 3 2 1

F

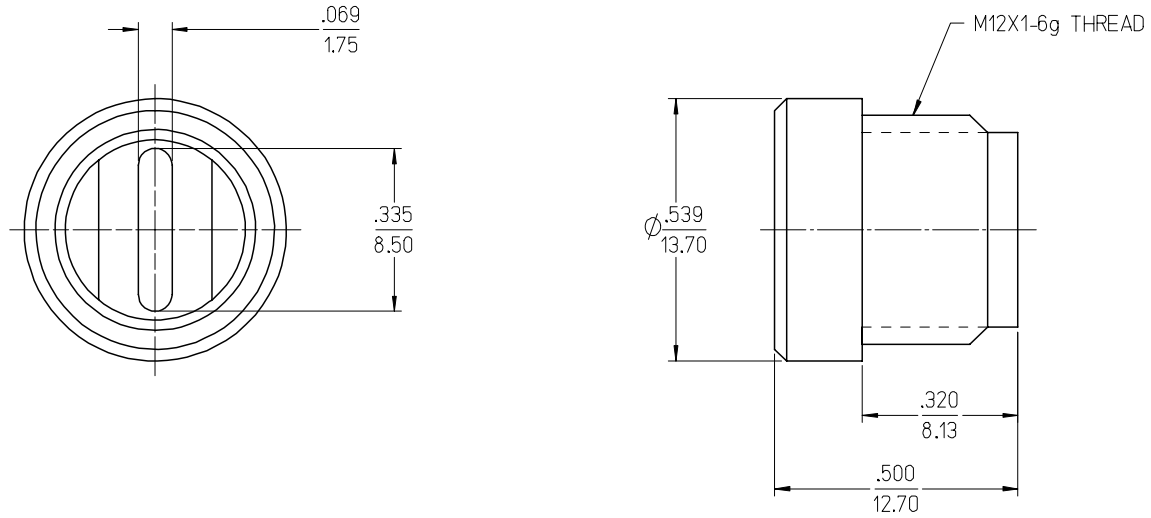
E

D

C

B

A



NOTES:
 1. MATERIAL: POLYPROPYLENE, BLACK
 2. PART IS ROHS COMPLIANT.

INITIAL RELEASE EC NO: ETC2007-0244 DRW: EHILE 2006/12/15 CHKD: JMACNEIL 2006/12/15 APPR: JMACNEIL 2006/12/15	DESCRIPTION A	QUALITY SYMBOLS ▽=0 ▽=0	GENERAL TOLERANCES (UNLESS SPECIFIED)		DIMENSION STYLE IN/MM	SCALE 4:1	DESIGN UNITS METRIC	THIRD ANGLE PROJECTION																
			<table border="1"> <thead> <tr> <th></th> <th>mm</th> <th>INCH</th> </tr> </thead> <tbody> <tr> <td>4 PLACES</td> <td>± ---</td> <td>± ---</td> </tr> <tr> <td>3 PLACES</td> <td>± ---</td> <td>± .005</td> </tr> <tr> <td>2 PLACES</td> <td>± 0.13</td> <td>± .01</td> </tr> <tr> <td>1 PLACE</td> <td>± 0.25</td> <td>± ---</td> </tr> </tbody> </table>		mm	INCH	4 PLACES	± ---	± ---	3 PLACES	± ---	± .005	2 PLACES	± 0.13	± .01	1 PLACE	± 0.25	± ---	DRAWN BY EHILE	DATE 2006/12/14	TITLE CLOSURE CAP, EXTERNALLY THREADED, MICRO-C			
			mm	INCH																				
		4 PLACES	± ---	± ---																				
3 PLACES	± ---	± .005																						
2 PLACES	± 0.13	± .01																						
1 PLACE	± 0.25	± ---																						
		CHECKED BY JMACNEIL	DATE 2006/12/14																					
		APPROVED BY JMACNEIL	DATE 2006/12/14	MOLEX INCORPORATED																				
		ANGULAR ±1/2°						MATERIAL NO. 848549019	DOCUMENT NO. SD-84854-013	SHEET NO. 1 OF 1														
DRAFT WHERE APPLICABLE MUST REMAIN WITHIN DIMENSIONS			SIZE B	THIS DRAWING CONTAINS INFORMATION THAT IS PROPRIETARY TO MOLEX INCORPORATED AND SHOULD NOT BE USED WITHOUT WRITTEN PERMISSION																				

9 8 7 6 5 4 3 2 1