

MATERIALS AND FINISHES

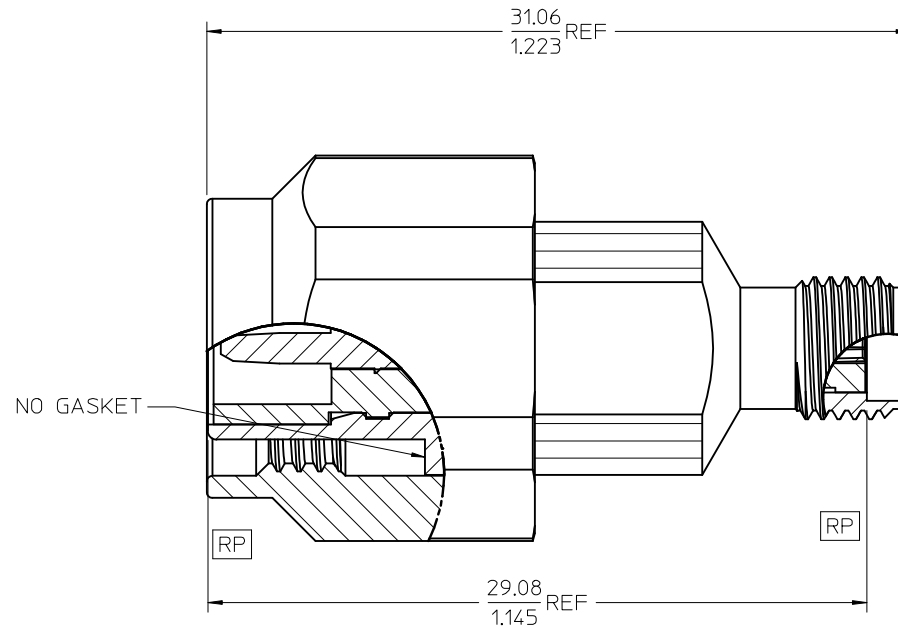
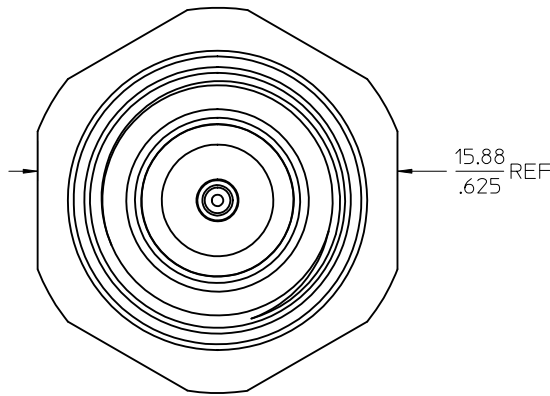
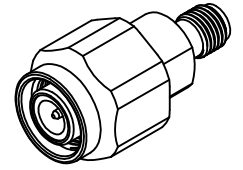
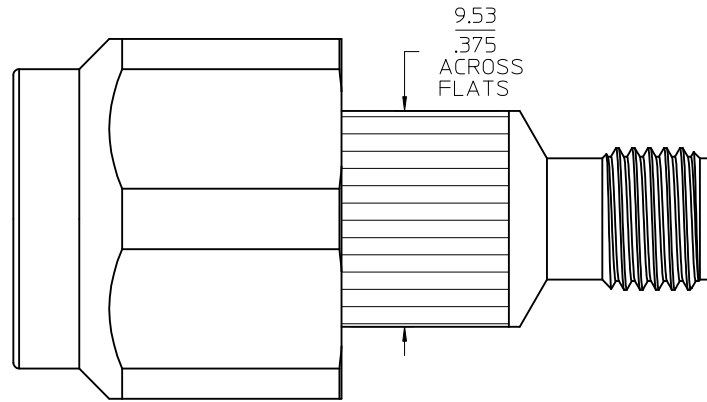
BODY: SEE TABLE  
PLATING SEE TABLE

CONTACT: BERYLLIUM COPPER  
PLATED GOLD

INSULATOR: TEFLON

COUPLING NUT: BRASS  
PLATED NICKEL

RETAINING RING: BERYLLIUM COPPER



73386-0103	PASSIVATED	STAINLESS STEEL	TRAY
73386-0102	NICKEL	BRASS	TRAY
73386-0101	PASSIVATED	STAINLESS STEEL	ONE PER BAG
PART NO.	FINISH	MATERIAL	PACKAGING

CHG: ADD -0101  
EC NO: URF2011-0577  
DRAWN: JWIENER 2011/04/04  
CHKD: AZR 2011/04/04  
APPR: JWIENER 2011/04/05

QUALITY SYMBOLS  
▽=0  
▽=0

GENERAL TOLERANCES (UNLESS SPECIFIED)

	mm	INCH
4 PLACES	± .005	± .0002
3 PLACES	± .003	± .0001
2 PLACES	± .002	± .00008
1 PLACE	± .001	± .00004

ANGULAR ± 2°

DRAFT WHERE APPLICABLE MUST REMAIN WITHIN DIMENSIONS

DIMENSION STYLE  
MM/IN

DRAWN BY	DATE
EDC	1997/12/30
CHECKED BY	DATE
DHG	1997/12/30
APPROVED BY	DATE
GMH	1997/12/30

MATERIAL NO. SEE TABLE

SCALE  
DESIGN UNITS  
METRIC

THIRD ANGLE PROJECTION

TITLE  
BSA, TNC PLUG TO  
SMA JACK  
BSA-TNC/SMA, EWR-2576

MOLEX MOLEX INCORPORATED

DOCUMENT NO. SD-73386-010

SHEET NO. 1 OF 1

THIS DRAWING CONTAINS INFORMATION THAT IS PROPRIETARY TO MOLEX INCORPORATED AND SHOULD NOT BE USED WITHOUT WRITTEN PERMISSION