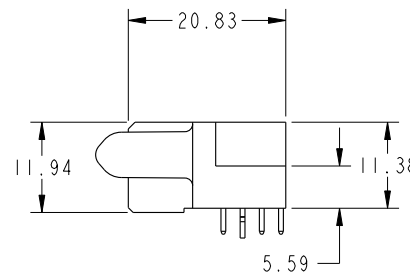
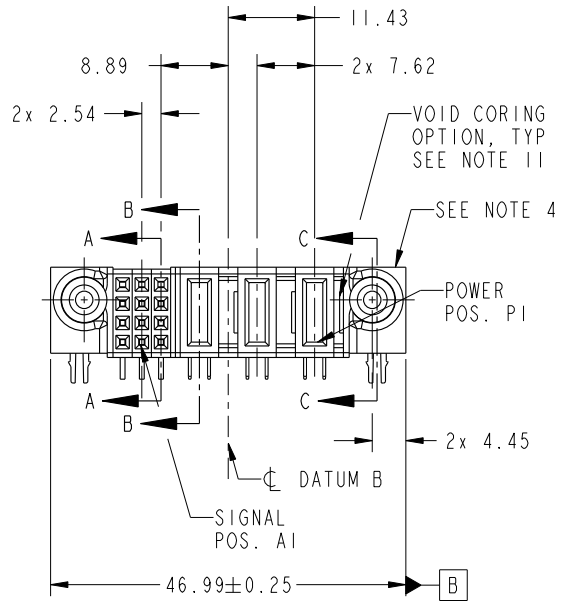


PRODUCT NO. 51915-481-- NOTE 3	ROWS D C B A	SIGNAL			POWER				
		E2	3	2	1	P3	P2	P1	E1

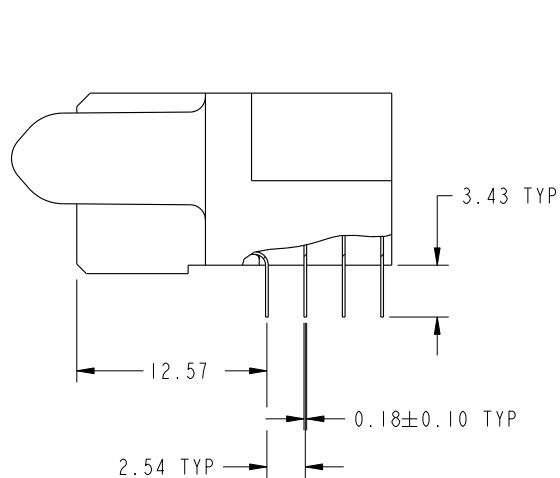


CODE	DIM "M" MATING LENGTH	CONTACT TYPE
PA	[1.07]	POWER
H	[N/A]	SIGNAL
G	[N/A]	SIGNAL
F	[N/A]	SIGNAL
E	[N/A]	SIGNAL
HA	[N/A]	HOLD-DOWN

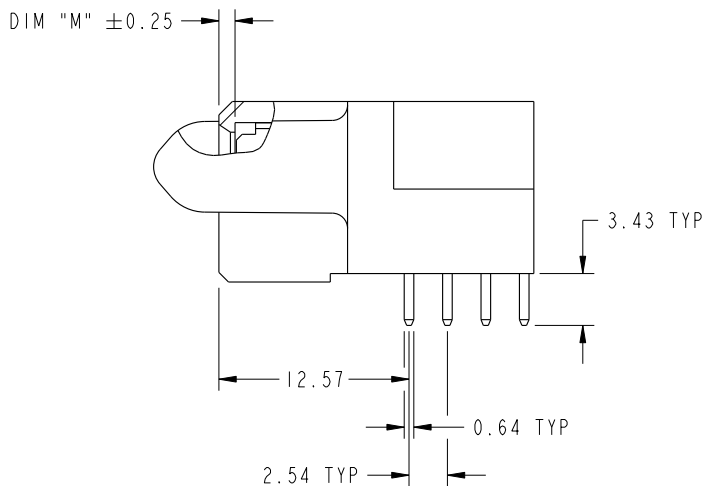
spec ref	SEE NOTES			dr	Luo Weller	2014/12/26	projection 	MM ←→	size	A4	scale	1:1
tolerance std	TOLERANCES UNLESS OTHERWISE SPECIFIED			eng	Luo Weller	2015/01/12			ecn no	-		
SEE NOTES				chr	-	-			rel level	Released		
surface	linear	0.X	±0.50	FCI www.fci.com	title	3ACP + 12S R/A SOLDER RECEPTACLE	dwg no	51915-481	rev	A		
		0.XX	±0.25									
		0.XXX	±0.10									
	angular	0°	±2°	cat. no.	Product - Customer Drw			sheet 1 of 4				

PRODUCT NUMBER

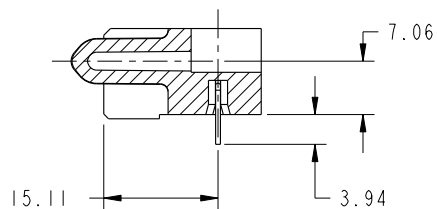
51915-481--
NOTE 3



BROKEN-OUT SECTION A-A
SCALE 2:1



BROKEN-OUT SECTION B-B
SCALE 2:1

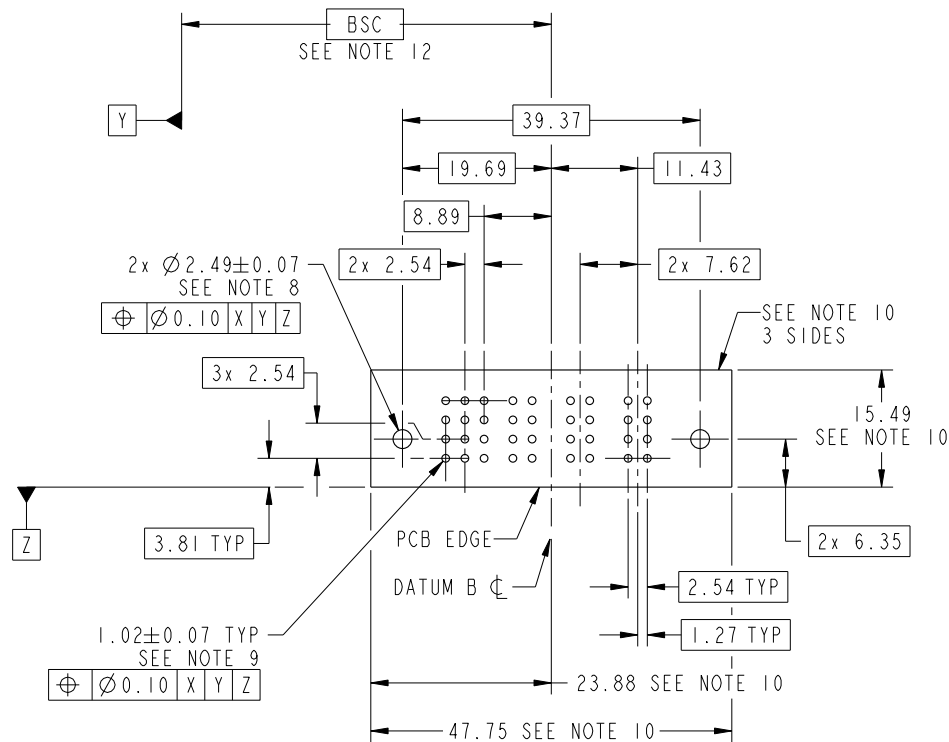


SECTION C-C

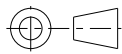


dr	Luo Weller	2014/12/26	projection 	MM ←————→	size	A4	scale	1:1
eng	Luo Weller	2015/01/12			ecn no	-		
chr	-	-			rel level	Released		
appr	Pei-Ming Zheng	2015/01/12	product family	PwrBlade	rev	51915-481	A	
	title	3ACP + 12S R/A SOLDER RECEPTACLE		dwg no				
www.fci.com	cat. no.	Product - Customer Drw			sheet 2 of 4			

PRODUCT NUMBER

51915-481--
NOTE 3



RECOMMENDED PCB LAYOUT

dr	Luo Weller	2014/12/26	projection 	MM 	size	A4	scale	1:1
eng	Luo Weller	2015/01/12			ecn no	-		
chr	-	-			rel level	Released		
appr	Pei-Ming Zheng	2015/01/12	product family	PwrBlade	rel level	Released		
		title 3ACP + 12S R/A SOLDER RECEPTACLE	dwg no 51915-481	rev A				
www.fci.com	cat. no.	Product - Customer Drw			sheet 3 of 4			

PRODUCT NUMBER

51915-481--
NOTE 3

NOTES:

1. DIMENSIONS AND TOLERANCES ARE IN ACCORDANCE WITH ASME Y14.5M, 1994 UNLESS OTHERWISE SPECIFIED.

CONNECTOR NOTES:

- 2. HOUSING MATERIAL: UL 94 V-0 GLASS FILLED HIGH-TEMP THERMOPLASTIC
POWER CONTACT MATERIAL: COPPER ALLOY
SIGNAL PIN MATERIAL: COPPER ALLOY
 - 3. SEE ITEM 5 & 6 IN PRINT 10064183 FOR PLATING SPEC OF 51915-481 AND 51915-481LF RESPECTIVELY.
 - 4. MANUFACTURER'S NAME, DATE CODE AND OPTIONAL P/N TO APPEAR ON THIS SURFACE. THE MARK CAN BE OMITTED IF THERE IS NOT ENOUGH SPACE ON THIS SURFACE.
 - 5. PRODUCT SPECIFICATION GS-12-149.
APPLICATION SPECIFICATION BUS-20-067.
 - 6. PACKAGED IN TRAYS.
- PCB NOTES:
- 7. ALL HOLE DIAMETERS ARE FINISHED HOLE SIZE.
 - 8. MOUNTING HOLES, WHERE APPLICABLE, ARE UNPLATED.
 - 9. $\varnothing 1.151 \pm 0.025$ DRILLED HOLES PLATED WITH
0.008 MIN SnPb OR Sn OVER 0.03
TO 0.08 Cu PLATING TO ACHIEVE
 $\varnothing 1.02 \pm .07$ HOLE.
 - 10. CONNECTOR KEEP-OUT ZONE.
 - 11. THE VOID CORING IN BETWEEN POWER MODULES, SIGNAL MODULES AND END MODULES ARE OPTIONAL AND THE SHAPE MAY BE DIFFERENT FOR OPTIMIZE THE MOLDING PROCESS. THE VOID CORING WILL NOT EFFECT TO PRODUCT FUNCTION.
 - 12. DATUM AND BASIC DIMENIONS ARE ESTABLISHED BY CUSTOMER.

dr	Luo Weller	2014/12/26	projection 	MM 	size	A4	scale	1:1			
eng	Luo Weller	2015/01/12			ecn no	-					
chr	-	-			product family	PwrBlade	rel level	Released			
appr	Pei-Ming Zheng	2015/01/12	www.fci.com		title	3ACP + 12S R/A SOLDER RECEPTACLE		dwg no	51915-481	rev	A
cat. no.			Product - Customer Drw				sheet 4 of 4				



Copyright FCI.