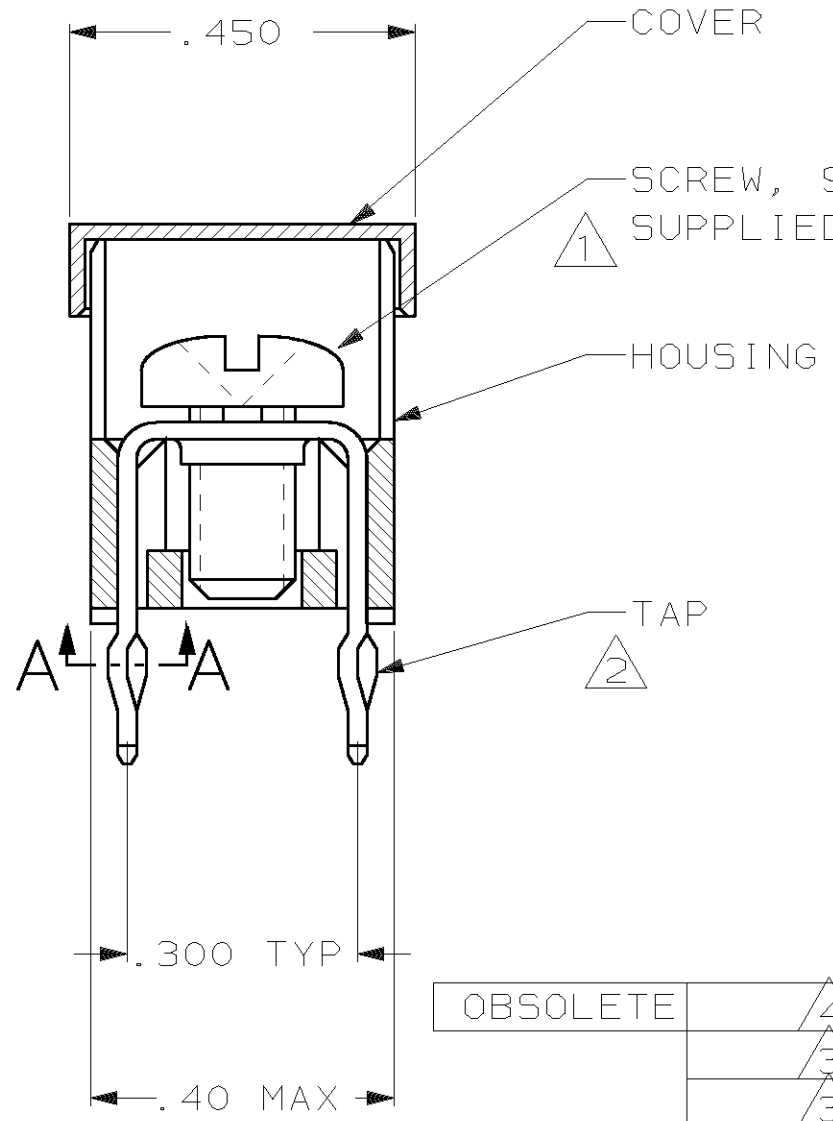
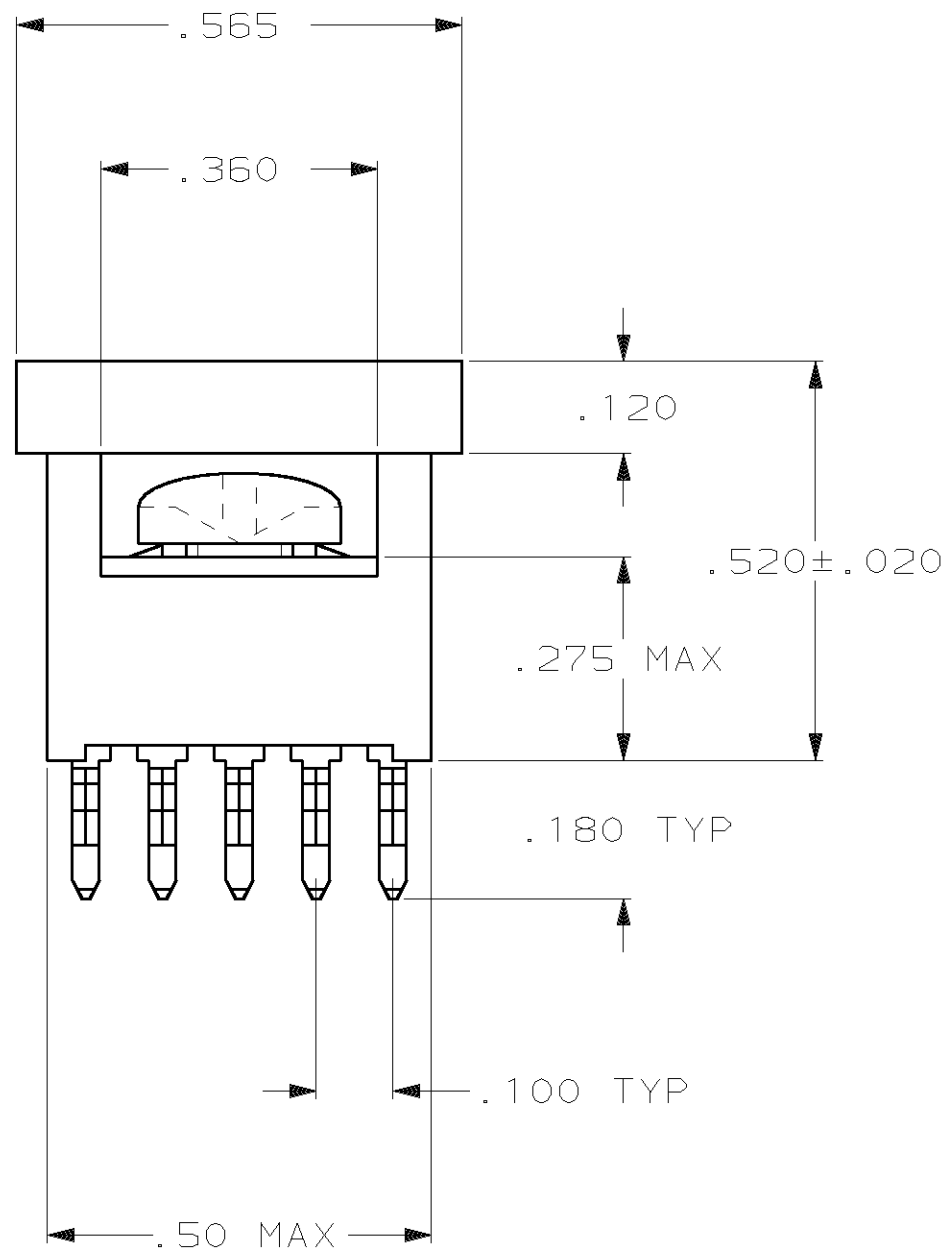


THIS DRAWING IS UNPUBLISHED. RELEASED FOR PUBLICATION, 19
 © COPYRIGHT 19 BY AMP INCORPORATED. ALL INTERNATIONAL RIGHTS RESERVED.

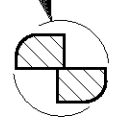
| MOD | LOC | DIST | P | F | REVISIONS | | | | |
|-----|-----|------|---|---|-----------|-----|----------------------|---------|------|
| | | | | | ZONE | LTR | DESCRIPTION | DATE | APPD |
| - | GP | 00 | | | | K | REV PER OUE0-0037-01 | 17OCT01 | JR |



- ① TO PREVENT THREAD STRIPPING, SCREW TORQUE SHOULD NOT EXCEED 9 IN LBS.
- ② TAP HOLE IS 6-32UNC-2B, TWO MIN THREADS.
- ③ PACKAGED BULK.
- ④ PACKAGED INDIVIDUALLY.

| | | | | |
|----------|-----------|---------------------------|-------|---------|
| OBSOLETE | ④ | YES | YES | 55557-5 |
| | ③ | YES | YES | 55557-4 |
| | ③ | YES | NO | 55557-3 |
| OBSOLETE | - | NO | YES | 55557-2 |
| | - | NO | NO | 55557-1 |
| | PACKAGING | HOUSING AND TAP ASSEMBLED | SCREW | PART NO |

.050 ± .005 DIA



SECTION A-A
 SCALE 10:1
 10 PLACES

| | |
|--|--------------------------|
| DO NOT SCALE PRINT. UNLESS SPECIFIED DIMENSIONS IN INCHES TOLERANCES ON: | DR J. McCLINTON 1/11/88 |
| 2 PLC DEC ± | CHK R. STONE 1/11/88 |
| 3 PLC DEC ± .010 | APPD M. GALLOWAY 1/15/88 |
| ANGLES ± | APPD M. GALLOWAY 1/15/88 |
| MATERIAL HOUSING: NYLON TAP: COPPER ALLOY 725, .025 THICK | PRODUCT SPEC |
| FINISH TAP: .000150 TIN-LEAD OVER .000050 NICKEL | APPLICATION SPEC |
| | WEIGHT |

| | | |
|---|---------------|------------------|
| AMP INCORPORATED Harrisburg, Pa. 17105 | | |
| NAME TAP ASSEMBLY, POWER DISTRIBUTION | | |
| SIZE B | FSCM NO 00779 | DRAWING NO 55557 |
| SCALE 4:1 | SHEET 1 OF 1 | |

CUSTOMER DRAWING