

PART NUMBER	REV	FIRST USED	TERMINATOR	FEED TYPE	DESCRIPTION
1426118-1	C	-	LEADMAKER	MECH POST FEED	CUTS CARRIER
1426118-2	C	-	BENCH	MECH PRE FEED	CUTS CARRIER
1426118-6	C	-	LEADMAKER	MECH POST FEED	CONTINUOUS CARRIER
7-1426118-1	C	-	LEADMAKER	MECH POST FEED	-1 AND SPARE PARTS
7-1426118-2	C	-	BENCH	MECH PRE FEED	-2 AND SPARE PARTS
7-1426118-6	C	-	LEADMAKER	MECH POST FEED	-6 AND SPARE PARTS
7-1426118-7	C	-	-	-	SPARE PARTS KIT

CRIMP DATA AMP TERMINAL AMP CRIMP SPECS

TERMINAL NAME: .070 SERIES RECEPTACLE CONTACT

CRIMP	SIZE	TYPE	RANGE
WIRE	2.29 [.090 IN]	F	0.75MM ² - 1.5MM ²
INSUL	2.60 [.102 IN]	F	1.70-2.40 [.067-.095 IN]
WIRE STRIP LENGTH		APPL INSTRUCTION	
3.50-4.50 [.138-.177 IN]		408-8322	

TERMINAL	FEED
APPL SPEC 114-3119	11.90 [.469 IN]

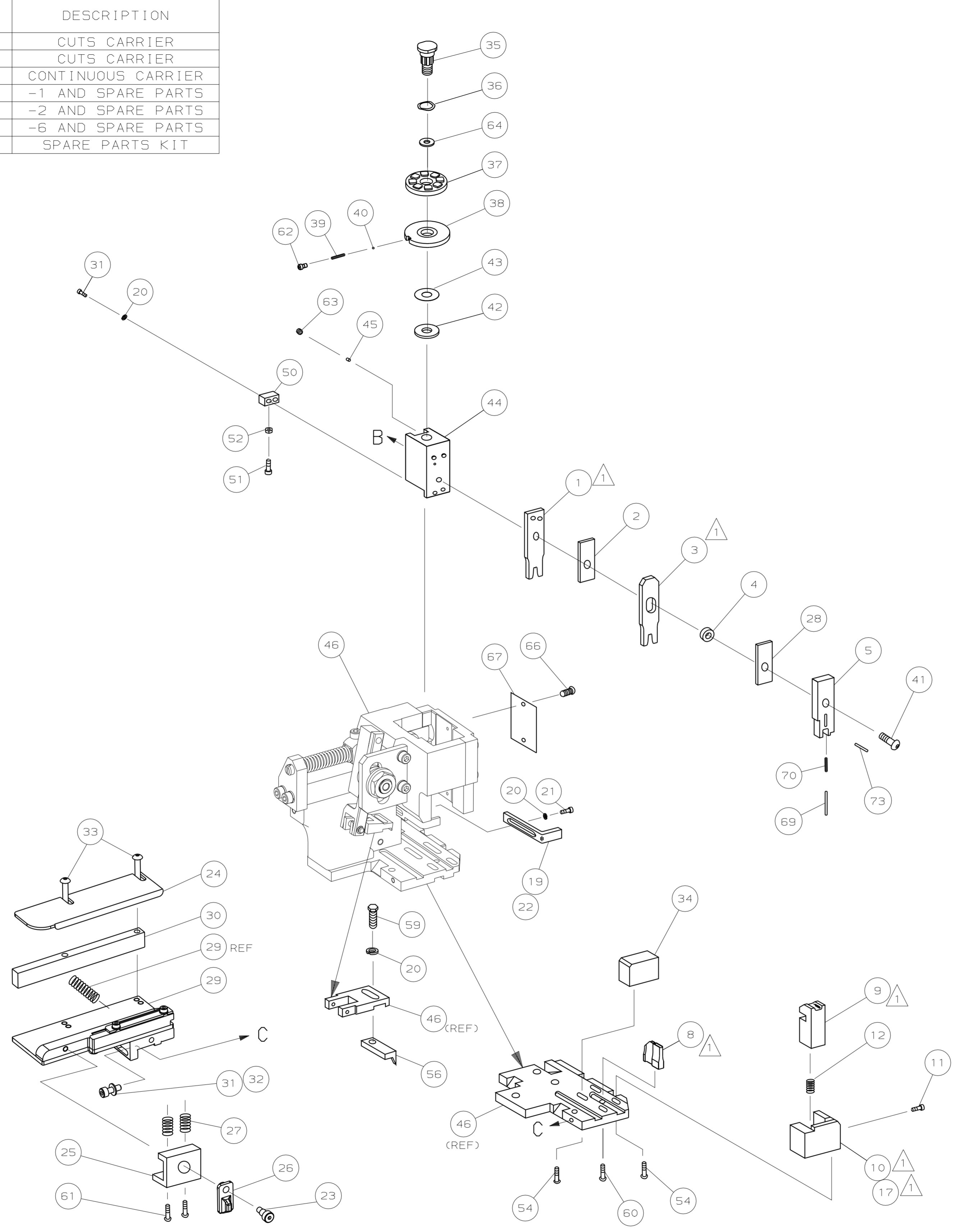
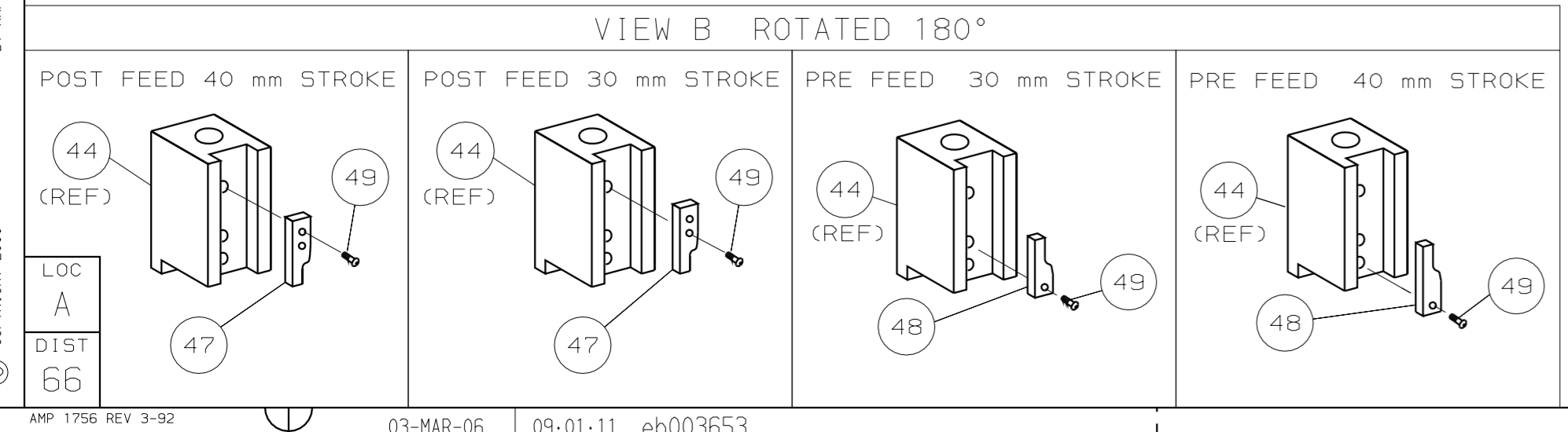
TERMINALS APPLIED

TERMINAL	REV	QTY	REV	QTY	REV
345208	-	-	-	-	-
-	-	-	-	-	-
-	-	-	-	-	-
-	-	-	-	-	-
-	-	-	-	-	-
-	-	-	-	-	-
-	-	-	-	-	-
-	-	-	-	-	-
-	-	-	-	-	-
-	-	-	-	-	-

WIRE SIZE mm ² AWG	CRIMP HEIGHT	PIN PN & LENGTH [IN]
1.50mm ²	1.59 ± 0.05 [.063 ± .002 IN]	9-354778-7 [.2980]
1.00mm ²	1.42 ± 0.05 [.056 ± .002 IN]	1-354779-2 [.3050]
0.75mm ²	1.32 ± 0.05 [.052 ± .002 IN]	2-354779-0 [.3090]

SET UP GAGE	LAYOUT
458637-3	L1426118

- RECOMMENDED SPARE PARTS.
- GREASE RAM, CAM, CAM FOLLOWER AND FEED ROD LIGHTLY.
 - LUBRICATE DAILY PER THE APPLICATOR INSTRUCTION SHEET SUPPLIED WITH THE APPLICATOR.



QTY	REV	QTY	REV	QTY	REV	QTY	REV	PART NO	DESCRIPTION	ITEM NG
-	1	1	1	1	1	1	1	21028-2	PIN, SLOTTED SPRING	73
-	1	1	1	1	1	1	1	1426118	PRINT, APPLICATOR LOG SHEET	72
-	1	1	1	1	1	1	1	1338705-1	DOCUMENTATION PACKAGE	71
-	1	1	1	1	1	1	1	1-22278-0	SPRING, COMPRESSION	70
-	1	1	1	1	1	1	1	854769-1	HOLDER, INSULATION	69
-	1	1	1	1	1	1	1			68
-	1	1	1	1	1	1	1	461264-1	PLATE, IDENTIFICATION	67
-	2	2	2	2	2	2	2	21017-2	SCR,DRIVE (#2x.19) ID PLATE	66
-	1	1	1	1	1	1	1			65
-	1	1	1	1	1	1	1	986950-1	WASHER, FLAT PRECISION	64
-	1	1	1	1	1	1	1	3-18031-0	SCR,SKT SET (M6X6) RAM	63
-	1	1	1	1	1	1	1	18023-9	SCR,SHC (M4X6) INS DISC	62
-	2	2	2	2	2	2	2	2-18032-5	SCR,SKT,SET (MSX20) DRAG	61
-	1	1	1	1	1	1	1	18024-7	SCR,BHC (M4X10) ANVIL	60
-	1	1	1	1	1	1	1	5-18022-2	SCR,HEX (M4X8) FEED FINGER	59
-										58
-										57
-	1	1	1	1	1	1	1	1338685-1	PAWL, FEED	56
-										55
-	4	4	4	4	4	4	4	18024-8	SCR,BHC (M4X12) SHEAR HOLDER	54
-	1	1	1	1	1	1	1			53
-	1	1	1	1	1	1	1	18030-1	NUT, HEX (M3) HOLD DOWN	52
-	1	1	1	1	1	1	1	811242-5	BUMPER, HOLDDOWN	51
-	1	1	1	1	1	1	1	690753-2	SPACER, TONKER	50
-	1	1	1	1	1	1	1	18024-3	SCR,BHC (M3X10) CAM	49
-	-	-	-	-	-	-	-	1338675-1	CAM, PRE FEED 30 & 40 mm ST	48
-	1	-	1	-	1	-	1	1338676-1	CAM, POST FEED 30 & 40 mm ST	47
-	1	1	1	1	1	1	1	1320999-3	APPLICATOR BASIC SUBASSY	46
-	1	1	1	1	1	1	1	690191-1	PLUG, NYLON	45
-	1	1	1	1	1	1	1	1338660-1	RAM	44
-	1	1	1	1	1	1	1	690125-1	WASHER, LAMINATED	43
-	1	1	1	1	1	1	1	690124-1	WASHER, RAM	42
-	1	1	1	1	1	1	1	2-18024-6	SCR,BHC (M8X25) RAM	41
-	1	1	1	1	1	1	1	23241-1	BALL, STEEL	40
-	1	1	1	1	1	1	1	2-22278-7	SPRING, COMPRESSION	39
-	1	1	1	1	1	1	1	1-1320922-1	DISC, INSULATION	38
-	1	1	1	1	1	1	1	354777-1	WIRE DISC, PLASTIC	37
-	1	1	1	1	1	1	1	22480-5	WASHER, SPRING	36
-	1	1	1	1	1	1	1	690212-1	POST, RAM	35
-	1	1	1	1	1	1	1	1320934-1	SUPPORT, TERMINAL	34
-	2	2	2	2	2	2	2	1-18024-0	SCR,BHC (M4X20) STRIP GUIDE	33
-	1	1	1	1	1	1	1	18027-2	WASHER, FLAT (M4)	32
-	3	3	3	3	3	3	3	1-18023-2	SCR,SKT CAP (M4X12) MOUNT BLOCK	31
-	1	1	1	1	1	1	1	1320908-1	SPACER, STRIP GUIDE	30
-	1	1	1	1	1	1	1	1633073-1	STRIP GUIDE PLATE ASSY	29
-	1	1	1	1	1	1	1	1-455888-7	SPACER, FRONT SHEAR DEP	28
-	2	2	2	2	2	2	2	1-22284-0	SPRING, DRAG	27
-	1	1	1	1	1	1	1	356835-1	LEVER, DRAG RELEASE	26
-	1	1	1	1	1	1	1	240792-1	DRAG, TERMINAL	25
-	1	1	1	1	1	1	1	1320928-1	PLATE, STRIP GUIDE	24
-	1	1	1	1	1	1	1	980371-4	SCR,SHC SHLD	23
-	1	-	1	-	1	-	1	690472-2	STRIPPER	22
-	1	1	1	1	1	1	1	1-18023-1	SCR,SHC (M4X10) STRIPPER	21
-	4	4	4	4	4	4	4	18025-2	WASHER, LOCK (M4) STRIPPER	20
-	-	1	-	-	1	-	-	690472-1	STRIPPER	19
-	-	-	-	-	-	-	-			18
-	1	-	-	1	-	-	-	1338684-1	HOLDER, SHEAR, FRONT (NO-CUT)	17
-										16
-										15
-										14
-										13
-	1	1	1	1	1	1	1	3-22280-3	SPRING, SHEAR	12
-	1	1	1	1	1	1	1	356885-4	STOP, SHEAR	11
-	-	1	1	-	1	1	1	1320921-1	HOLDER, SHEAR, FRONT (CUT)	10
-	1	1	1	1	1	1	1	462006-1	SHEAR, FLOAT (FRONT)	9
-	1	2	2	2	1	1	1	1-1333205-7	ANVIL	8
-										7
-										6
-	1	1	1	1	1	1	1	854772-1	DEPRESSOR, SHEAR (FRONT)	5
-	1	1	1	1	1	1	1	238011-4	SPACER, BLOCK CRIMPER	4
-	1	2	2	2	1	1	1	679440-2	CRIMPER, INSULATION	3
-	1	1	1	1	1	1	1	455888-5	SPACER, CRIMPER	2
-	1	2	2	2	1	1	1	1-456406-8	CRIMPER, WIRE	1

REVISION RECORD

REV	DESCRIPTION	DATE
1	SEE ECR-06-005183	MAR06
2	SEE ECR-05-018139	DEC05
3	SEE ECN 015A-0058-01	MAR04
4	REMOVE BURRS, BREAK SHARP EDGES RO.38 MAX	JAN01

PARTS LIST

QTY	REV	QTY	REV	QTY	REV	QTY	REV	PART NO	DESCRIPTION	ITEM NG
-	1	1	1	1	1	1	1	21028-2	PIN, SLOTTED SPRING	73
-	1	1	1	1	1	1	1	1426118	PRINT, APPLICATOR LOG SHEET	72
-	1	1	1	1	1	1	1	1338705-1	DOCUMENTATION PACKAGE	71
-	1	1	1	1	1	1	1	1-22278-0	SPRING, COMPRESSION	70
-	1	1	1	1	1	1	1	854769-1	HOLDER, INSULATION	69
-	1	1	1	1	1	1	1			68
-	1	1	1	1	1	1	1	461264-1	PLATE, IDENTIFICATION	67
-	2	2	2	2	2	2	2	21017-2	SCR,DRIVE (#2x.19) ID PLATE	66
-	1	1	1	1	1	1	1			65
-	1	1	1	1	1	1	1	986950-1	WASHER, FLAT PRECISION	64
-	1	1	1	1	1	1	1	3-18031-0	SCR,SKT SET (M6X6) RAM	63
-	1	1	1	1	1	1	1	18023-9	SCR,SHC (M4X6) INS DISC	62
-	2	2	2	2	2	2	2	2-18032-5	SCR,SKT,SET (MSX20) DRAG	61
-	1	1	1	1	1	1	1	18024-7	SCR,BHC (M4X10) ANVIL	60
-	1	1	1	1	1	1	1	5-18022-2	SCR,HEX (M4X8) FEED FINGER	59
-										58
-										57
-	1	1	1	1	1	1	1	1338685-1	PAWL, FEED	56
-										55
-	4	4	4	4	4	4	4	18024-8	SCR,BHC (M4X12) SHEAR HOLDER	54
-	1	1	1	1	1	1	1			53
-	1	1	1	1	1	1	1	18030-1	NUT, HEX (M3) HOLD DOWN	52
-	1	1	1	1	1	1	1	811242-5	BUMPER, HOLDDOWN	51
-	1	1	1	1	1	1	1	690753-2	SPACER, TONKER	50
-	1	1	1	1	1	1	1	18024-3	SCR,BHC (M3X10) CAM	49
-	-	-	-	-	-	-	-	1338675-1	CAM, PRE FEED 30 & 40 mm ST	48
-	1	-	1	-	1	-	1	1338676-1	CAM, POST FEED 30 & 40 mm ST	47
-	1	1	1	1	1	1	1	1320999-3	APPLICATOR BASIC SUBASSY	46
-	1	1	1	1	1	1	1	690191-1	PLUG, NYLON	45
-	1	1	1	1	1	1	1	1338660-1	RAM	44
-	1	1	1	1	1	1	1	690125-1	WASHER, LAMINATED	43
-	1	1	1	1	1	1	1	690124-1	WASHER, RAM	42
-	1	1	1	1	1	1	1	2-18024-6	SCR,BHC (M8X25) RAM	41
-	1	1	1	1	1	1	1	23241-1	BALL, STEEL	40
-	1	1	1	1	1	1	1	2-22278-7	SPRING, COMPRESSION	39
-	1	1	1	1	1	1	1	1-1320922-1	DISC, INSULATION	38
-	1	1	1	1	1	1	1	354777-1	WIRE DISC, PLASTIC	37
-	1	1	1	1	1	1	1	22480-5	WASHER, SPRING	36
-	1	1	1	1	1	1	1	690212-1	POST, RAM	35
-	1	1	1	1	1	1	1	1320934-1	SUPPORT, TERMINAL	34
-	2	2	2	2	2	2	2	1-18024-0	SCR,BHC (M4X20) STRIP GUIDE	33
-	1	1	1	1	1	1	1	18027-2	WASHER, FLAT (M4)	32
-	3	3	3	3	3	3	3	1-18023-2	SCR,SKT CAP (M4X12) MOUNT BLOCK	31
-	1	1	1	1	1	1	1	1320908-1	SPACER, STRIP GUIDE	30
-	1									