



Code Conductor, Two-Hole, Long Barrel with Window Lug

For Use with Stranded Copper Conductors



- Meets TIA-607-B requirements for network systems grounding applications
- Tested by Telcordia – meets NEBS Level 3 with AWG conductor
- Requires crimping tools and dies, see pages M.46 – M.49
- UL Listed and CSA Certified with AWG conductor for use up to 35 KV** and temperature rated 90°C when crimped with Panduit and specified competitor crimping tools and dies
- Color-coded barrels marked with Panduit and specified competitor die index numbers for proper crimp die selection
- Long barrel maximizes number of crimps and provides premium wire pull-out strength and electrical performance
- Inspection window to visually assure full conductor insertion
- Tin-plated to inhibit corrosion
- Available with NEMA hole sizes and spacing

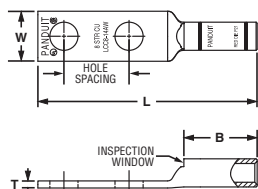


Figure 1: Straight

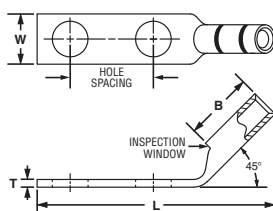


Figure 2: 45° Bent

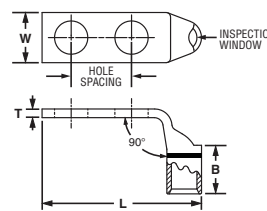


Figure 3: 90° Bent

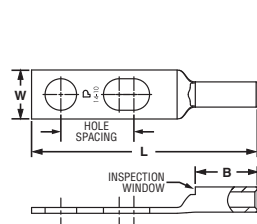


Figure 4: Slotted, Straight

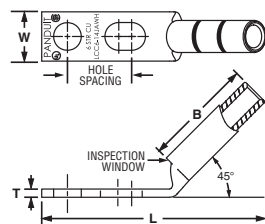


Figure 5: Slotted, 45° Bent

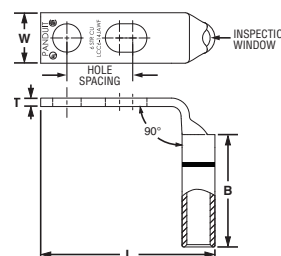


Figure 6: Slotted, 90° Bent

Part Number	Figure No.	Copper Conductor Size	Stud Hole Size In.	Stud Hole Spacing In.	Figure Dimensions In.			Panduit Crimping Tool‡	Panduit Die Color and Die No.‡	Wire Strip Length In.	Busbar Pattern^	Std. Pkg. Qty.
					W	B	L					
LCC10-14JAW-L*	4	#14 – #10 AWG STR, #12 – #10 AWG SOL	1/4	0.50 – 0.63	0.42	0.53	1.93	CT-1570, CT-1701	—	9/16	B	50
LCC10-14JAWH-L*	5		1/4	0.50 – 0.63	0.42	0.53	1.78				B	50
LCC10-14JAWF-L*	6		1/4	0.50 – 0.63	0.42	0.53	1.56				B	50
LCC10-14AW-L*	1		1/4	0.63	0.42	0.53	1.93				B	50
LCC8-10AW-L	1	#8 AWG	#10	0.63	0.41	0.70	2.01	CT-1700, CT-930, CT-2930/L, CT-2930/LE	Red P21	3/4	B	50
LCC8-14AWH-L	2		1/4	0.63	0.48	0.70	1.91				B	50
LCC8-14AWF-L	3		1/4	0.63	0.48	0.70	1.61				B	50
LCC8-38DW-L	1		3/8	1.00	0.60	0.70	2.70				B, D	50

‡See pages M.50 – M.53 for Panduit and competitor tool and die information.

*Not tested to NEBS Level 3 requirements.

**Consult cable manufacturer for voltage stress relief instructions with applications greater than 2000 V.

^See page M.30 for busbar patterns.

◆NEMA hole sizes and spacing.



Code Conductor, Two-Hole, Long Barrel with Window Lug (continued)

Part Number	Figure No.	Copper Conductor Size	Stud Hole Size In.	Stud Hole Spacing In.	Figure Dimensions In.			Panduit Crimping Tool‡	Panduit Die Color and Die No.‡	Wire Strip Length In.	Busbar Pattern^	Std. Pkg. Qty.
					W	B	L					
LCC6-10ABW-L	4	#6 AWG	#10	0.63 – 0.75	0.46	1.07	2.52	CT-1700, CT-930, CT-2930/L, CT-2930/LE	Blue P24	1 1/8	B	50
LCC6-14JAW-L	4		1/4	0.50 – 0.63	0.48	1.07	2.49				B	50
LCC6-14JAWH-L	5		1/4	0.50 – 0.63	0.48	1.07	2.08				B	50
LCC6-14JAWF-L	6		1/4	0.50 – 0.63	0.48	1.07	1.66				B	50
LCC6-14AW-L	1		1/4	0.63	0.48	1.07	2.49				B	50
LCC6-38DW-L	1		3/8	1.00	0.62	1.07	3.08				B, D	50
LCC6-12W-L	1		1/2	1.75	0.75	1.07	3.97				1 1/8	N
LCC4-14AW-L	1	#4 – #3 AWG STR, #2 AWG SOL	1/4	0.63	0.55	1.05	2.50	CT-1700, CT-930, CT-2930/L, CT-2930/LE	Gray P29	1 1/8	B	50
LCC4-38DW-L	1		3/8	1.00	0.62	1.05	3.09				B, D	50
LCC4-12W-L	1		1/2	1.75	0.75	1.05	4.01				1 1/8	N
LCC2-14AW-Q	1	#2 AWG	1/4	0.63	0.60	1.16	2.67	CT-1700, CT-930, CT-2930/L, CT-2930/LE	Brown P33	1 1/4	B	25
LCC2-38DW-Q	1		3/8	1.00	0.66	1.16	3.24				B, D	25
LCC2-12W-Q	1		1/2	1.75	0.75	1.16	4.41				N	25
LCC1/0-14AW-X	1	1/0 AWG	1/4	0.63	0.76	1.44	3.07	CT-930, CT-2930/L, CT-2930/LE	Pink P42	1 1/2	B	10
LCC1/0-38DW-X	1		3/8	1.00	0.76	1.44	3.57				B, D	10
LCC1/0-12W-X	1		1/2	1.75	0.80	1.44	4.74				N	10
LCC2/0-14AW-X	1	2/0 AWG	1/4	0.63	0.85	1.50	3.23	CT-930, CT-2930/L, CT-2930/LE	Black P45	1 9/16	B	10
LCC2/0-38DW-X	1		3/8	1.00	0.85	1.50	3.67				B, D	10
LCC2/0-12W-X	1		1/2	1.75	0.85	1.50	4.83				N	10
LCC3/0-38DW-X	1	3/0 AWG	3/8	1.00	0.96	1.50	3.70	CT-930, CT-2930/L, CT-2930/LE	Orange P50	1 9/16	B, D	10
LCC3/0-12W-X	1		1/2	1.75	0.96	1.50	4.87				N	10
LCC4/0-38DW-X	1	4/0 AWG	3/8	1.00	1.06	1.56	3.81	CT-930, CT-2930/L, CT-2930/LE	Purple P54	1 5/8	N	10
LCC4/0-12W-X	1		1/2	1.75	0.96	1.56	3.81				N	10
LCC250-38DW-X	1	250 kcmil	3/8	1.00	1.17	1.61	3.89	CT-930, CT-2930/L, CT-2930/LE	Yellow P62	1 11/16	B, D	10
LCC250-12W-X	1		1/2	1.75	1.17	1.61	4.12				N	10

‡See pages M.50 – M.53 for Panduit and competitor tool and die information.

*Not tested to NEBS Level 3 requirements.

**Consult cable manufacturer for voltage stress relief instructions with applications greater than 2000 V.

^See page M.30 for busbar patterns.

◆NEMA hole sizes and spacing.

Table continues on page M.38

**Code Conductor, Two-Hole, Long Barrel with Window Lug
(continued)**

Part Number	Figure No.	Copper Conductor Size	Stud Hole Size In.	Stud Hole Spacing In.	Figure Dimensions In.			Panduit Crimping Tool‡	Panduit Die Color and Die No.‡	Wire Strip Length In.	Busbar Pattern^	Std. Pkg. Qty.
					W	B	L					
◆ LCC350-12W-X	1	350 kcmil	1/2	1.75	1.28	2.24	5.76	CT-930, CT-2930/L, CT-2930/LE	Red P71	2 5/16	N	10
LCC350-38DW-X	1		3/8	1.00	1.28	2.24	4.58		Red P71		B, D	10
◆ LCC400-12W-6	1	400 kcmil	1/2	1.75	1.28	2.30	5.84	CT-930, CT-2930/L, CT-2930/LE	Blue P76	2 3/8	N	6
LCC400-38DW-6	1		3/8	1.00	1.39	2.30	4.66		Blue P76		B, D	6
◆ LCC500-12W-6	1	500 kcmil	1/2	1.75	1.54	2.50	6.12	CT-930, CT-2930/L, CT-2930/LE	Brown P87	2 9/16	N	6
LCC500-38DW-6	1		3/8	1.00	1.54	2.50	4.94		Brown P87		B, D	6
◆ LCC600-12W-6	1	600 kcmil	1/2	1.75	1.70	2.69	6.36	CT-930, CT-2930/L, CT-2930/LE	Green P94	2 3/4	N	6
LCC600-38DW-6	1		3/8	1.00	1.70	2.69	5.18		Green P94		B, D	6
◆ LCC750-12W-6	1	750 kcmil	1/2	1.75	1.89	2.88	6.65	CT-930, CT-2930/L, CT-2930/LE	Black P106	2 15/16	N	6
LCC750-38DW-6	1		3/8	1.00	1.89	2.88	5.71		Black P106		B, D	6

‡See pages M.50 – M.53 for Panduit and competitor tool and die information.

*Not tested to NEBS Level 3 requirements.

**Consult cable manufacturer for voltage stress relief instructions with applications greater than 2000 V.

^See page M.30 for busbar patterns.

◆NEMA hole sizes and spacing.