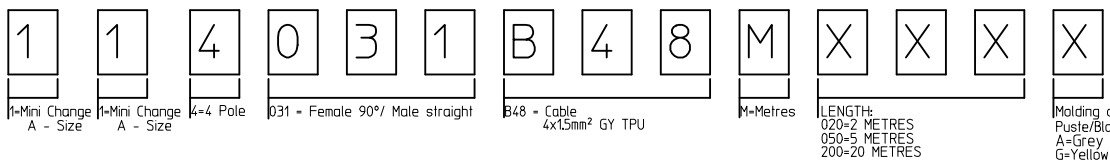


CABLE SPECIFICATION:  
 TEMPERATURE RANGE:  
 STATIC: max -40/+90°C  
 DINAMIC: -25/+80°C  
 UL STYLE: 21215

JACKET:  
 DIAMETER: 7.80+/-0.30mm  
 COLOR: GRAY  
 CONDUCTOR:  
 COPPER: 16AWG  
 INSULATION:  
 DIAMETER: 2.40+/-0.10mm  
 COMPOUND: TPE

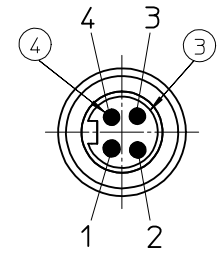
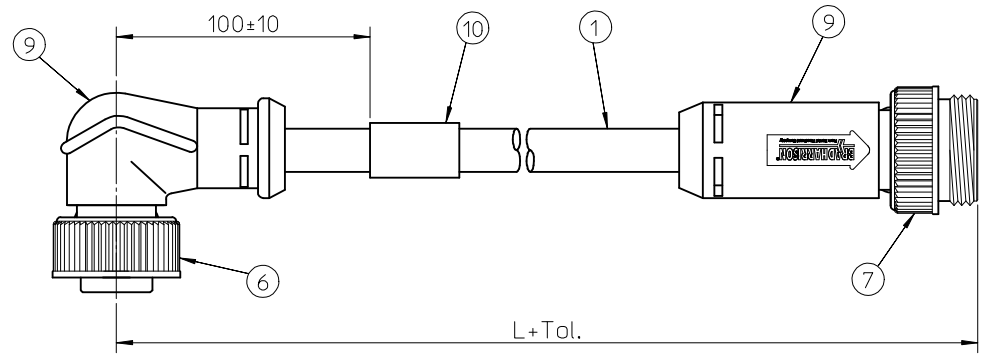
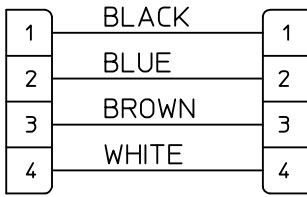
PART No MATRIX



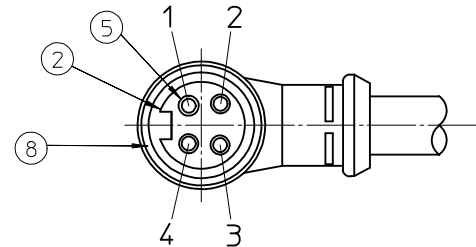
OPTIONS

| Over  | Up to and including | Tolerance (+) |
|-------|---------------------|---------------|
| 0     | 305                 | +19           |
| 305   | 915                 | +45           |
| 915   | 1830                | +56           |
| 1830  | 3660                | +89           |
| 3660  | 7320                | +165          |
| 7320  | 14640               | +317          |
| 14640 | 30500               | +610          |
| 30500 | >                   | +2% of length |

WIRING DIAGRAM



VIEW FROM THE FRONT SIDE



VIEW FROM THE FRONT SIDE

BILL OF MATERIALS

| ITEM | QTY. | DESCRIPTION             | MATERIAL      | FINISH          |
|------|------|-------------------------|---------------|-----------------|
| 10   | 1    | LABEL                   | -             | -               |
| 9    | -    | OVERMOLD                | TPU           | BLACK           |
| 8    | 1    | FRICTION RING A-SIZE    | DUPONT ZYTEL  | -               |
| 7    | 1    | COUPLING NUT A-SIZE MA  | ZINC DIE-CAST | BLACK           |
| 6    | 1    | COUPLING NUT A-SIZE FE  | ZINC DIE-CAST | BLACK           |
| 5    | 4    | SOCKET SLEEVE           | -             | -               |
| 4    | 4    | PIN CONTACT             | BRASS         | PLATE PER S-243 |
| 3    | 1    | INSERT 4P MALE A-SIZE   | PVC           | -               |
| 2    | 1    | INSERT 4P FEMALE A-SIZE | PVC           | -               |
| 1    | -    | CABLE 4x1.5mm²          | TPU           | GRAY            |

PIN OUT CHANGED  
 EC NO: IPG2015-1985  
 DRWN:FGAIK 2015/05/21  
 CH'KD:OSTACHOWIAK 2015/05/21  
 APPR:MIWASIECZKO 2015/06/09

| QUALITY SYMBOLS | GENERAL TOLERANCES (UNLESS SPECIFIED) |
|-----------------|---------------------------------------|
| ▽=0             | 4 PLACES ± --- ± ---                  |
| ▽=0             | 3 PLACES ± --- ± ---                  |
|                 | 2 PLACES ± --- ± ---                  |
|                 | 1 PLACE ± --- ± ---                   |
|                 | 0 PLACE ± --- ± ---                   |
|                 | ANGULAR ± --- °                       |

| DIMENSION STYLE |            | SCALE                       | DESIGN UNITS |
|-----------------|------------|-----------------------------|--------------|
| MM ONLY         |            | ---                         | METRIC       |
| DRAWN BY        | DATE       | TITLE                       |              |
| AKONDRACIUK     | 2015/04/29 | MC 4P FE RA<br>MA STR XM DE |              |
| CHECKED BY      | DATE       |                             |              |
| FGAIK           | 2015/04/29 |                             |              |
| APPROVED BY     | DATE       |                             |              |
| MATERIAL NO.    |            | DOCUMENT NO.                | SHEET NO.    |
| SEE MATRIX      |            | SD-130010-034               | 1 OF 1       |

THIRD ANGLE PROJECTION

**molex**

THIS DRAWING CONTAINS INFORMATION THAT IS PROPRIETARY TO MOLEX INCORPORATED AND SHOULD NOT BE USED WITHOUT WRITTEN PERMISSION