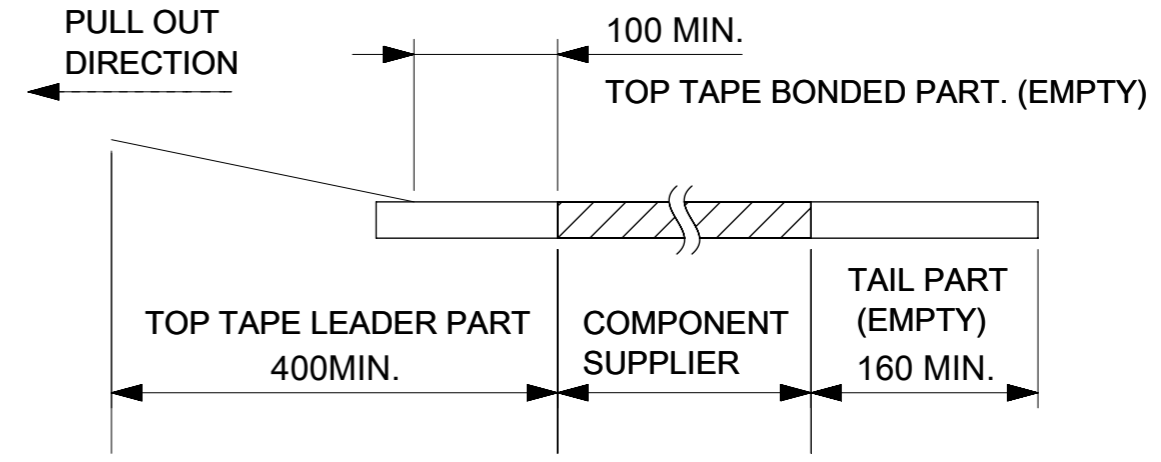
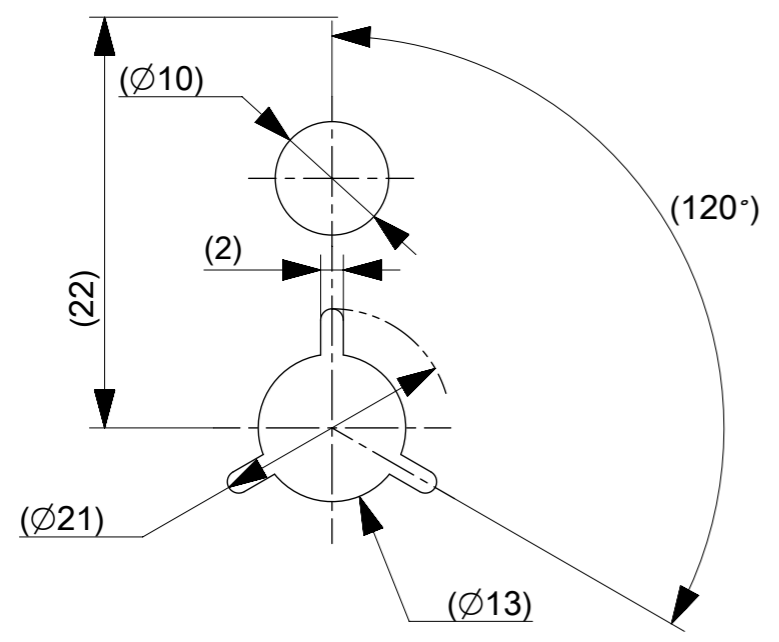


NOTES

- 1. RE DETAILED DIMENSION, SEE PRODUCT DRAWING.
- 2. NUMBER OF CONNECTORS : 15000PCS/REEL
- 3. LEAD TAPE LENGTH.

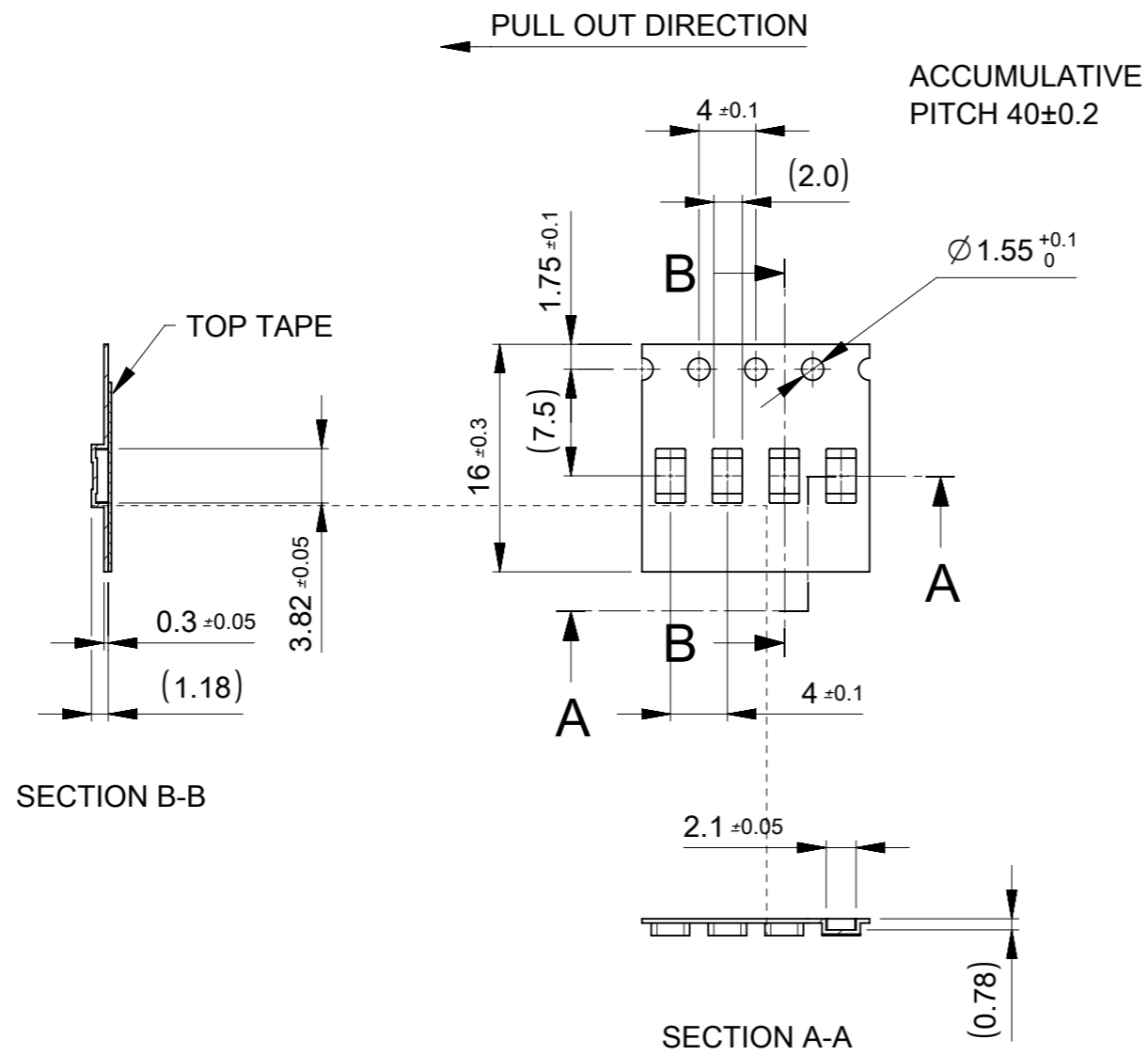


- 4. PEELING OFF FORCE OF THE TOP TAPE IS DEFINED BY IEC60286-3.
- 5. MATERIAL
 CARRIER TAPE : POLYSTYRENE OR PET
 TOP TAPE : PET , OTHER
 REEL : POLYSTYRENE (PS) < RECYCLE MATERIAL CONTAINED >



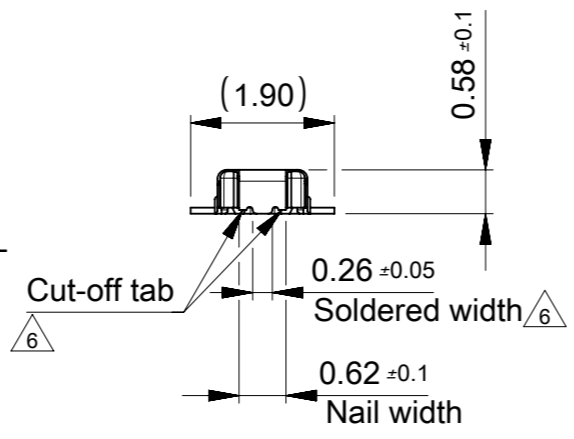
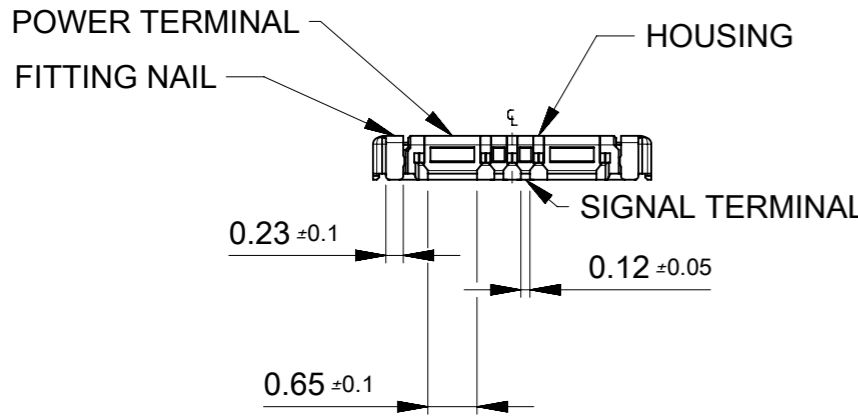
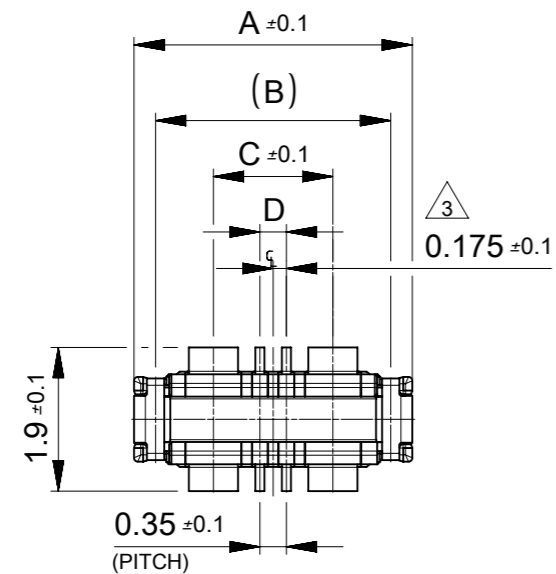
DETAIL "D"

SYMBOLS		THIS DRAWING CONTAINS INFORMATION THAT IS PROPRIETARY TO MOLEX ELECTRONIC TECHNOLOGIES, LLC AND SHOULD NOT BE USED WITHOUT WRITTEN PERMISSION	
▽ = 0	mm	SCALE	1:1
▽ = 0	GENERAL TOLERANCES (UNLESS SPECIFIED)		
▽ = 0	ANGULAR TOL	±	3.0 °
▽ = 0	4 PLACES	±	0.03
▽ = 0	3 PLACES	±	0.03
▽ = 0	2 PLACES	±	0.05
▽ = 0	1 PLACE	±	0.1
▽ = 0	0 PLACES	±	0.2
■ = 0	DRAFT WHERE APPLICABLE MUST REMAIN WITHIN DIMENSIONS		
▽ = 0	THIRD ANGLE PROJECTION	DRAWING	SERIES
		A3-SIZE	211176
CURRENT REV DESC:		molex 0.35 BB H=0.7 GCB7 PLUG EMBOSS PACKAGE PRODUCT CUSTOMER DRAWING	
EC NO: 634655		DRWN: TTANIGUCHI01 2019/12/26	
CHK'D: YNAITO		2020/03/26	
APPR: RTAKEUCHI		2020/03/26	
INITIAL REVISION:		DRWN: TTANIGUCHI01 2019/01/09	
APPR: RTAKEUCHI		2020/03/26	
DOCUMENT NUMBER	DOC TYPE	DOC PART	REVISION
2111760000-SD	PSD	000	A
MATERIAL NUMBER	CUSTOMER	SHEET NUMBER	
SEE CHART	GENERAL	1 OF 2	



2111760080	○	---	4+4
ORDER NO.	HIGH VOL. TOOL	LOW VOL. TOOL	Ckt.
	SAMPLE PREPARATION ○ : TOOLED △ : WORK IN PROCESS --- : TOOLING TO BE CONFIRMED		
CONNECTOR No.	2111761080		

SYMBOLS	THIS DRAWING CONTAINS INFORMATION THAT IS PROPRIETARY TO MOLEX ELECTRONIC TECHNOLOGIES, LLC AND SHOULD NOT BE USED WITHOUT WRITTEN PERMISSION		
	DIMENSION UNITS	SCALE	CURRENT REV DESC:
▽ = 0	mm	2:1	EC NO: 634655 DRWN: TTANIGUCHI01 2019/12/26 CHK'D: YNAITO 2020/03/26 APPR: RTAKEUCHI 2020/03/26 INITIAL REVISION: DRWN: TTANIGUCHI01 2019/01/09 APPR: RTAKEUCHI 2020/03/26
▽ = 0	GENERAL TOLERANCES (UNLESS SPECIFIED)		
▽ = 0	ANGULAR TOL ± 3.0°		
▽ = 0	4 PLACES	± 0.03	
▽ = 0	3 PLACES	± 0.03	
▽ = 0	2 PLACES	± 0.05	PRODUCT CUSTOMER DRAWING
▽ = 0	1 PLACE	± 0.1	
▽ = 0	0 PLACES	± 0.2	DOCUMENT NUMBER
☒ = 0	DRAFT WHERE APPLICABLE MUST REMAIN WITHIN DIMENSIONS		2111760000-SD
▽ = 0	THIRD ANGLE PROJECTION	DRAWING	DOC TYPE
		SERIES	DOC PART
		MATERIAL NUMBER	REVISION
		CUSTOMER	
		SHEET NUMBER	
		SEE CHART	
		GENERAL	
		2 OF 2	

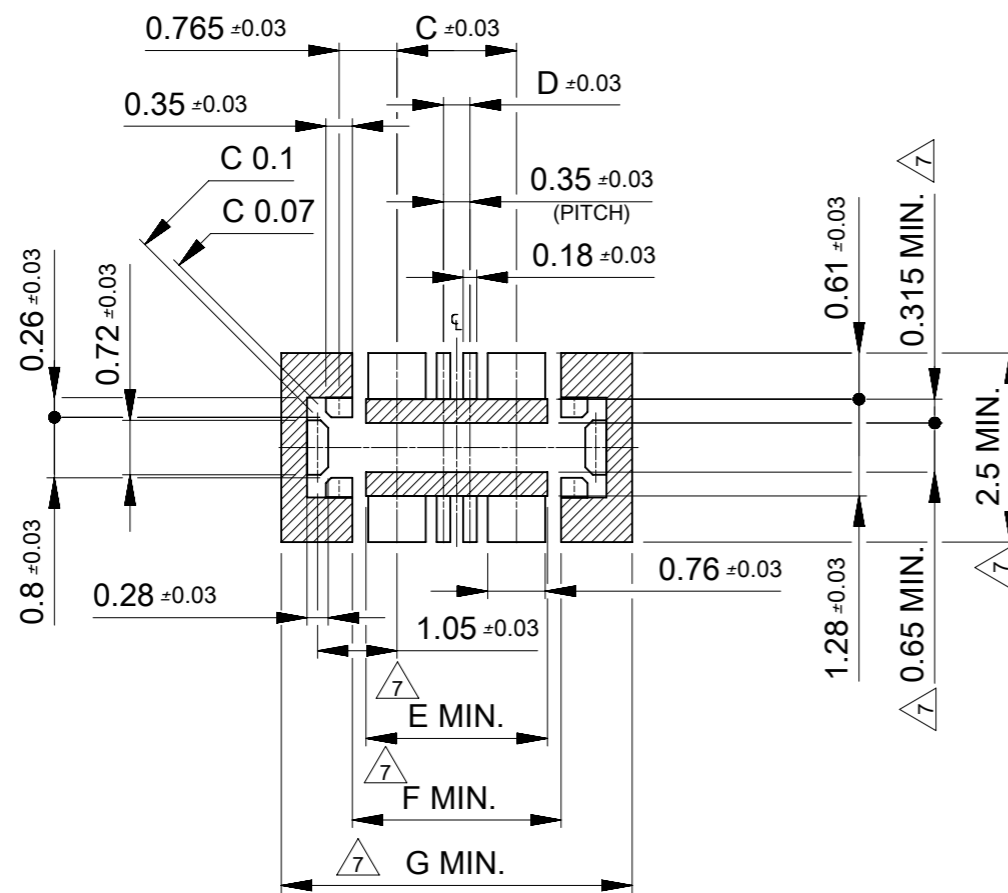


NOTE

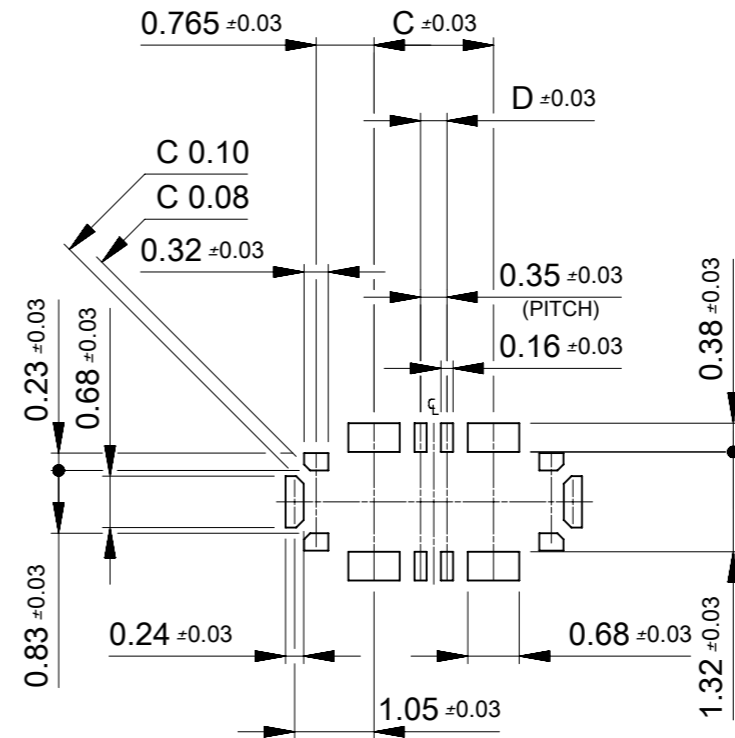
- 1 MATERIAL
HOUSING : LIQUID CRYSTAL POLYMER UL94V-0(COLOR : BLACK)
TERMINAL : COPPER ALLOY
FITTING NAIL : COPPER ALLOY
- 2 PLATING
TERMINAL :
CONTACT AREA : SEPARAED GOLD PLATING (0.1 MICROMETER MINIMUM)
SOLDER TAIL AREA : SEPARATED GOLD PLATING
UNDER PLATING : NICKEL OVERALL
*DIVIED INTO PARTS THE GOLD PLATING OF THE CONTACT AND THE TAIL PART BY THE NICKEL PLATING.
- FITTING NAIL :
CONTACT AREA : SEPARAED GOLD PLATING (0.1 MICROMETER MINIMUM)
SOLDER TAIL AREA : SEPARATED GOLD PLATING
UNDER PLATING : NICKEL OVERALL
*DIVIED INTO PARTS THE GOLD PLATING OF THE CONTACT AND THE TAIL PART BY THE NICKEL PLATING.
- △₃ APPLY FOR (CIRCUIT/2)=EVEN
- 4 MATE WITH : 2111750**0
- 5 TAIL AND FITTING NAIL COPLANARITY TO BE 0.08MAXIMUM.
- △₆ IF THE PORTION OF 0.26 DIMENSION IS SOLDERED, PERFORMANCE WILL BE OF NO PROBLEM FOR CUT-OFF PORTIONS NOT TO SOLDER.
- △₇ PROHIBITED AREA OF PATTERN WIRING AND SOLDER.
(FOR EACH AREA, THE WIRING THAT TOUCHES ON THE SOLDER CAN BE ATTACHED, THEN COVERED WITH A FILM TO KEEP SOLDER OUT.)

4.64	2.76	2.4	0.35	1.58	3.11	3.68	2111760080	○	---	4+4P
G	F	E	D	C	(B)	A	EMBOSS TAPE PACKAGE	HIGH VOL. TOOL	LOV VOL. TOOL	CIRCUIT
							ORDER No.	SAMPLE PREPARATION ○ : TOOLED △ : WORK IN PROCESS --- : TOOLING TO BE CONFIRMED		
CONNECTOR SERIES No. : 2111761**0										

THIS DRAWING CONTAINS INFORMATION THAT IS PROPRIETARY TO MOLEX ELECTRONIC TECHNOLOGIES, LLC AND SHOULD NOT BE USED WITHOUT WRITTEN PERMISSION		CURRENT REV DESC:		molex	
DIMENSION UNITS	SCALE	EC NO: 636047			
mm	10:1	DRWN: ZQWANG13 2020/04/06		0.35 B-TO-B H=0.7 GCB7 PLUG ASSY	
GENERAL TOLERANCES (UNLESS SPECIFIED)		CHK'D: MSASAO 2020/04/17		PRODUCT CUSTOMER DRAWING	
ANGULAR TOL	± 3.0°	APPR: RTAKEUCHI 2020/04/17		DOCUMENT NUMBER	
4 PLACES	± 0.03	INITIAL REVISION:		2111761000-SD	
3 PLACES	± 0.03	DRWN: TTANIGUCHI01 2019/01/09		DOC TYPE	
2 PLACES	± 0.05	APPR: RTAKEUCHI 2020/03/26		PSD	
1 PLACE	± 0.1	DRAFT WHERE APPLICABLE MUST REMAIN WITHIN DIMENSIONS		DOC PART	
0 PLACES	± 0.2	THIRD ANGLE PROJECTION		000	
		DRAWING		REVISION	
		A3-SIZE		B	
		SERIES		SHEET NUMBER	
		211176		1 OF 2	



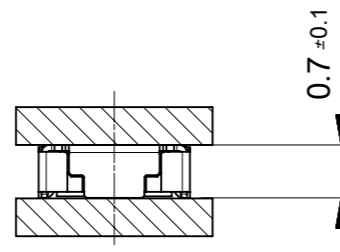
RECOMMENDED P.W. BOARD PATTERN LAYOUT



RECOMMENDED METAL MASK LAYOUT

RECOMMENDED THICKNESS : 0.08MM

RECOMMENDED APERTURE DIMENSION IS JUST SAME AS SHOWN FIGURE ABOVE.
FOR THIS DIMENSION, APERTURE RATIO ARE POWER, SIGNAL TERMINAL 55% AND
FITTING NAIL 80%.



MATING CONDITION

This dimension shows a dimension between the tail to tail.

THIS DRAWING CONTAINS INFORMATION THAT IS PROPRIETARY TO MOLEX ELECTRONIC TECHNOLOGIES, LLC AND SHOULD NOT BE USED WITHOUT WRITTEN PERMISSION									
DIMENSION UNITS	SCALE	CURRENT REV DESC:							
mm	1:1								
GENERAL TOLERANCES (UNLESS SPECIFIED)		EC NO: 636047			0.35 B-TO-B H=0.7 GCB7 PLUG ASSY				
ANGULAR TOL	± 3.0 °	DRWN: ZQWANG13 2020/04/06			PRODUCT CUSTOMER DRAWING				
4 PLACES	± 0.03	CHK'D: MSASAO 2020/04/17			DOCUMENT NUMBER				
3 PLACES	± 0.03	APPR: RTAKEUCHI 2020/04/17			2111761000-SD				
2 PLACES	± 0.05	INITIAL REVISION:			DOC TYPE				
1 PLACE	± 0.1	DRWN: TTANIGUCHI01 2019/01/09			PSD				
0 PLACES	± 0.2	APPR: RTAKEUCHI 2020/03/26			DOC PART				
DRAFT WHERE APPLICABLE MUST REMAIN WITHIN DIMENSIONS		THIRD ANGLE PROJECTION		DRAWING	SERIES	MATERIAL NUMBER	CUSTOMER	REVISION	
				A3-SIZE	211176		GENERAL	000	B
									SHEET NUMBER
									2 OF 2